

## 4 Bedroom Detached House for Sale - £575,000

Murrow Bank, Murrow, Wisbech, Cambs, PE13 4HD



### KEY FEATURES

- BEAUTIFUL FAMILY HOME!
- Large 4 Bed Detached House
- Double Garage & Gated Driveway
- Generous 0.65 acre plot (sts)
- Stunning Kitchen
- Lounge/Diner with feature fireplace
- Bar/Games Room
- Tucked away & completely private
- 8 Well Built working Kennels
- Walking distance from Shop/Pub/School

## Description

**YOUR FOREVER HOME!** Check out this beautiful detached family home, sitting on a generous 0.65 acre plot (sts) in the heart of the popular village of Murrow tucked away with gated drive, double garage, and beautiful gardens.

The property has previously ran a dog boarding kennels and still has 8 kennels/runs in good order with a separate paddock area. Large garden approximately 0.65 acre plot (sts) with a large tarmac driveway and lovely private wrap around gardens.

The accommodation consists of 2 separate entrance halls, stunning modern kitchen open to a sitting room with cosy log burner and window seat, separate utility room, downstairs shower room, bar/downstairs bedroom 5, large lounge/diner with feature fireplace and lots of natural light with patio doors opening out to the rear garden. Upstairs you'll find a huge modern family bathroom, **FOUR DOUBLE BEDROOMS** with the master having its own walk-in-wardrobe.

The property boasts plenty of character features such as dark wood cosmetic beams and dormer windows overlooking the village playing field, exposed brickwork giving you that charming cottage feel.

The property is heated by oil fired radiator central heating and has uPVC windows and doors throughout and private drainage.

A simply wonderful unique property must be viewed to be fully appreciated so get in touch to book your viewing today!

## Ground Floor

**Main Entrance Hall - 17' 1" x 6' 11" (5.21m x 2.13m)**

**Lounge - 18' 7" x 16' 6" (5.68m x 5.04m)**

**Dining Room - 13' 3" x 11' 6" (4.06m x 3.53m)**

**Kitchen - 16' 11" x 13' 9" (5.18m x 4.22m)**

**Sitting Room - 21' 1" x 12' 10" (6.43m x 3.92m)**

**Utility Room - 8' 10" x 8' 0" (2.7m x 2.45m)**

**Downstairs Shower Room - 6' 9" x 5' 11" (2.08m x 1.81m)**

**Rear Entrance Hall - 10' 0" x 5' 10" (3.06m x 1.8m)**

**Bar/Games Room - 16' 4" x 14' 10" (4.99m x 4.53m)**

## First Floor

**Landing Area -**

**Bedroom 1 - 18' 8" x 14' 6" (5.7m x 4.43m)**

**Bedroom 2 - 13' 3" x 13' 2" (4.05m x 4.02m)**

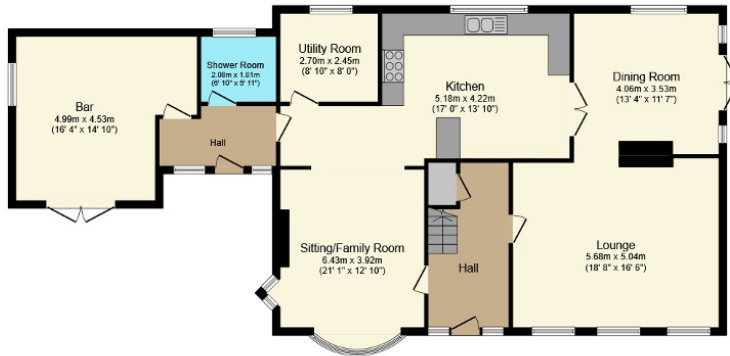
**Bedroom 3 - 13' 3" x 12' 11" (4.04m x 3.95m)**

**Bedroom 4 - 10' 11" x 8' 10" (3.33m x 2.71m)**

**Family Bathroom - 14' 2" x 13' 8" (4.33m x 4.2m)**

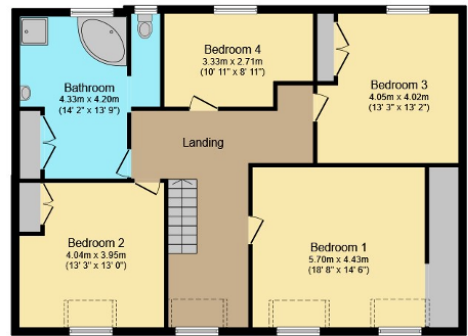






**Ground Floor**

Floor area 135.7 sq.m. (1,460 sq.ft.) approx



**First Floor**

Floor area 104.6 sq.m. (1,125 sq.ft.) approx

**Total floor area 240.2 sq.m. (2,586 sq.ft.) approx**

This Floor Plan is for illustration purposes only and may not be representative of the property. The position and size of doors, windows and other features are approximate. Unauthorized reproduction prohibited. © PropertyBOX

Additional Photos

