

## 2 Bedroom Detached Bungalow for Sale - £225,000

Hollycroft Road, Emneth, Wisbech, Cambs, PE14 8AY



### KEY FEATURES

- Well presented detached bungalow
- 2 double bedrooms
- Updated kitchen
- Large lounge
- Large bathroom
- Beautiful gardens
- Ample parking + car port
- 2 sheds + summer house
- Fantastic village location
- NO UPWARD CHAIN!



## Description

**PERFECT SETTING!** Situated in the heart of Emneth, this bungalow enjoys a good sized plot that enjoys ample parking (plenty of space for a motorhome or caravan), a car port and **BEAUTIFUL** gardens that includes 2 garden sheds and a summerhouse!

The well presented accommodation includes an updated fitted kitchen, good sized lounge, 2 double bedrooms, hallway and a large bathroom that includes a shower cubicle, bath, wc & wash basin.

The property benefits from having gas central heating (with recently installed boiler) and is on mains drainage.

**BEING SOLD WITH NO UPWARD CHAIN FOR THAT HASSLE FREE MOVE** - Contact us today to arrange a viewing!

## Ground Floor

Hallway -

Kitchen - 13' 6" x 10' 2" (4.14m x 3.1m)

Lounge/Diner - 16' 11" x 12' 11" (5.18m x 3.96m)

Bedroom One - 11' 10" x 9' 10" (3.61m x 3.02m)

Bedroom Two - 14' 9" x 8' 11" (4.5m x 2.72m)

Bathroom -









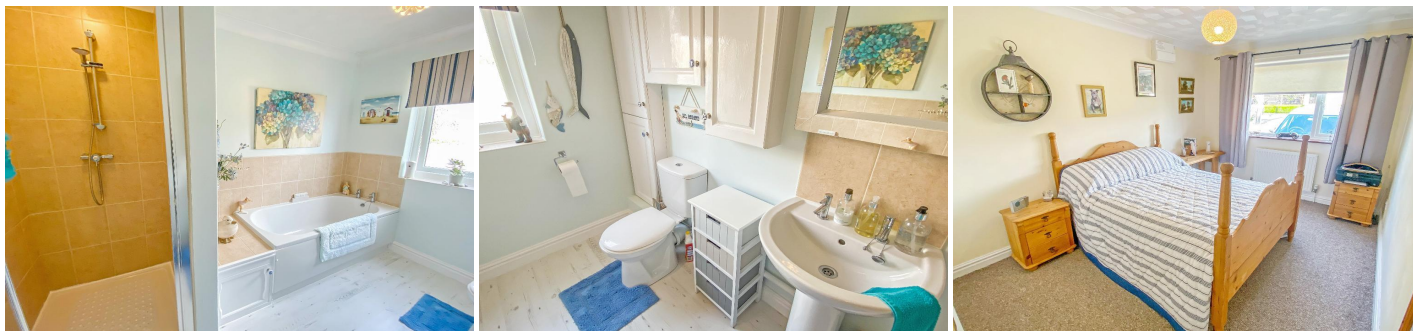
Floor area 72.6 sq. m. (781 sq. ft.) approx

Total floor area 72.6 sq. m. (781 sq. ft.) approx

This plan is for illustration purposes only and may not be representative of the property. Plan not to scale.

Powered by audioagent.com

## Additional Photos



## Energy Efficiency



