

GREY TOWERS VILLAGE

ELLERBECK AVENUE, NUNTHORPE, MIDDLESBROUGH TS7 0PW



3 & 4 BEDROOM HOMES

GREY TOWERS VILLAGE

DEVELOPMENT LAYOUT



Development layout and landscaping are not intended to form part of any contract or warranty unless specifically incorporated in writing into the contract. Images and development layout are for illustrative purposes only and should be used for general guidance only. Development layouts including parking arrangements, may change to reflect changes in planning permission and are not intended to form part of any contract or warranty unless specifically incorporated in writing. Please speak to your solicitor to whom full details of any planning consents including layout plans will be available. Grey Towers Village is a marketing name only and may not be the designated postal address, which may be determined by The Post Office.

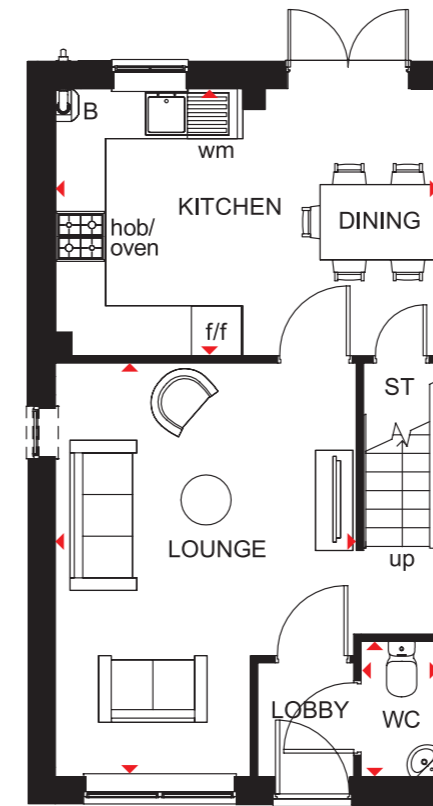


MAIDSTONE

3 BEDROOM TERRACED HOME



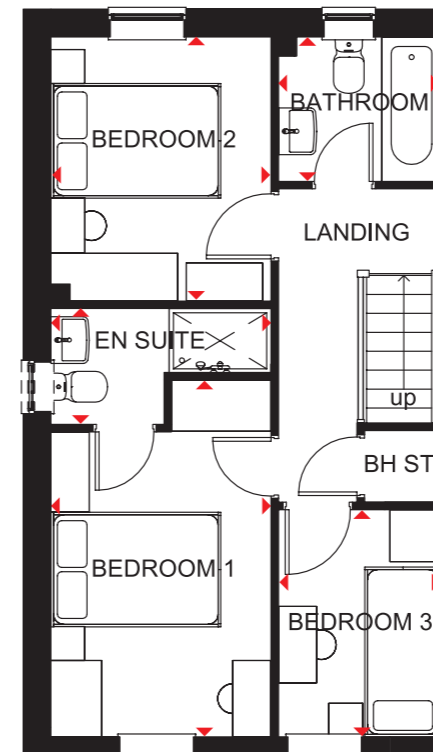
- An ideal family home designed with plenty of space for modern living
- The ground floor comprises a good-sized lounge and an open-plan kitchen with dining area and French doors leading to the garden
- The first floor has two double bedrooms – the generous main bedroom with en suite – a single bedroom and family bathroom



Ground Floor

Lounge	4598 x 4955mm	15'1" x 16'3"
Kitchen/Dining	4598 x 3202mm	15'1" x 10'6"
WC	935 x 1620mm	3'1" x 5'4"

[Approximate dimensions]



First Floor

Bedroom 1	2592 x 4204mm	8'6" x 13'10"
En Suite	2592 x 1365mm	8'6" x 4'6"
Bedroom 2	2592 x 3112mm	8'6" x 10'3"
Bedroom 3	1918 x 2676mm	6'4" x 8'9"
Bathroom	1918 x 1702mm	6'4" x 5'7"

[Approximate dimensions]

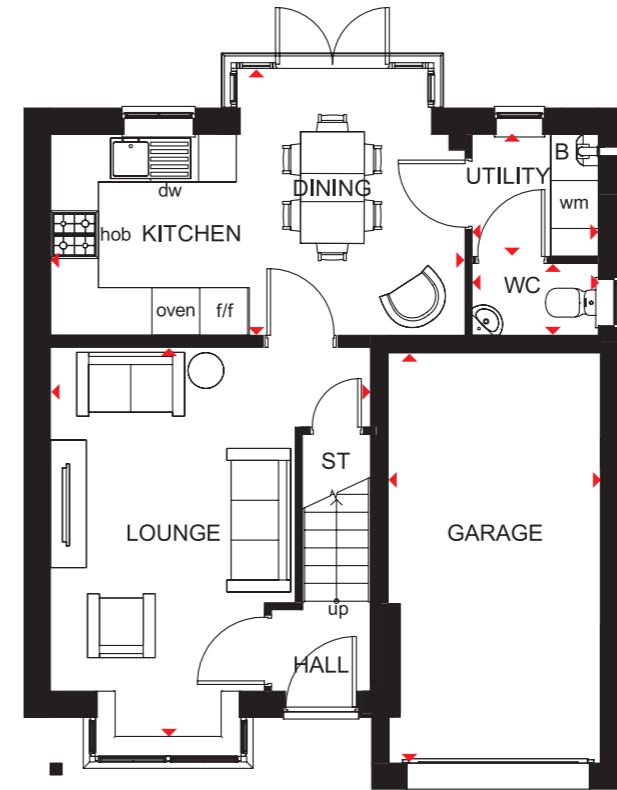
KEY	B	Boiler	wm	Washing machine space
	ST	Store	f/f	Fridge/freezer space
	BH ST	Bulhead store	◀▶	Dimension location

DERWENT

3 BEDROOM DETACHED HOME



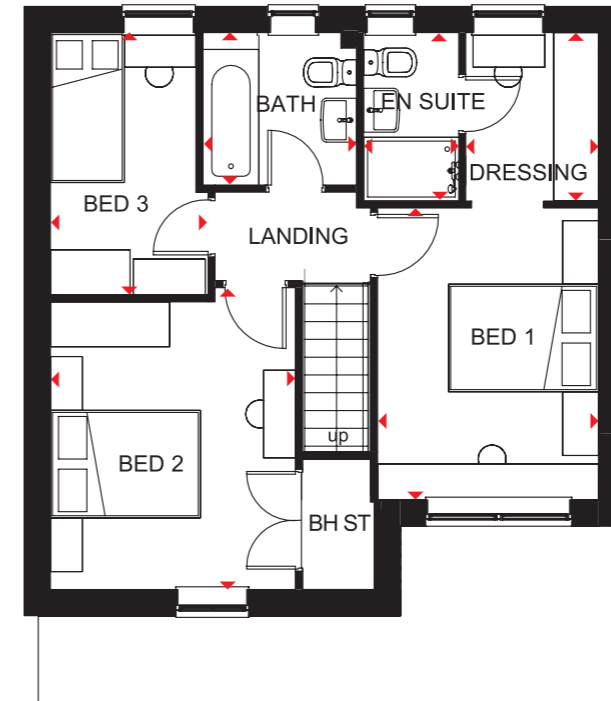
- A three bedroom home with open-plan kitchen and dining area with full-height glazed bay leading to the rear garden
- Lounge and utility room are also located on the ground floor
- On the first floor is the main bedroom with dressing area and en suite shower room, a further double bedroom, a single bedroom and family bathroom
- This home also comes with an integral garage



Ground Floor

Lounge	4903 x 4015mm	16'1" x 13'2"
Kitchen/Dining	5201 x 3349mm	17'1" x 11'0"
Utility	1585 x 1533mm	5'2" x 5'0"
WC	1585 x 903mm	5'2" x 3'0"
Garage	5142 x 2663mm	16'10" x 8'9"

[Approximate dimensions]



First Floor

Bedroom 1	3660 x 2770mm	12'0" x 9'1"
En Suite	2113 x 1193mm	6'11" x 3'11"
Dressing Area	2113 x 1666mm	6'11" x 5'6"
Bedroom 2	3787 x 3072mm	12'5" x 10'1"
Bedroom 3	3289 x 1977mm	10'9" x 6'6"
Bathroom	1925 x 1913mm	6'4" x 6'3"

[Approximate dimensions]

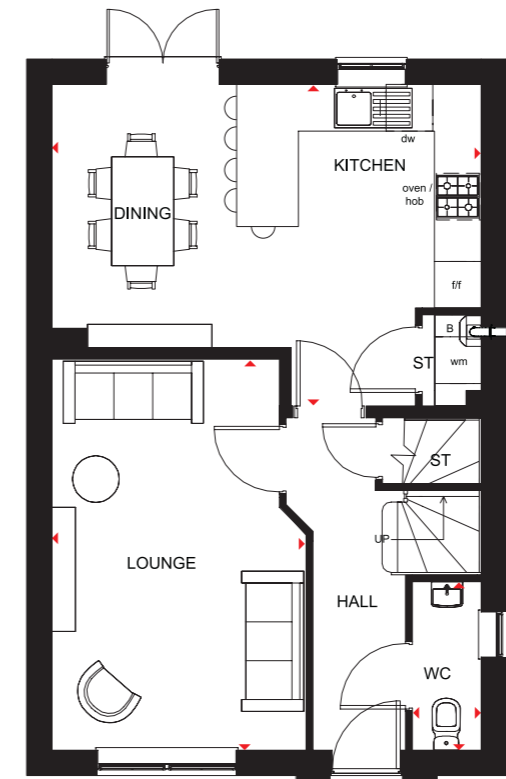
KEY	B	Boiler	f/f	Fridge/freezer space	◀▶	Dimension location
	ST	Store	BH ST	Bulkhead Store		
	wm	Washing machine space	dw	Dishwasher space		

CHESTER

4 BEDROOM DETACHED HOME



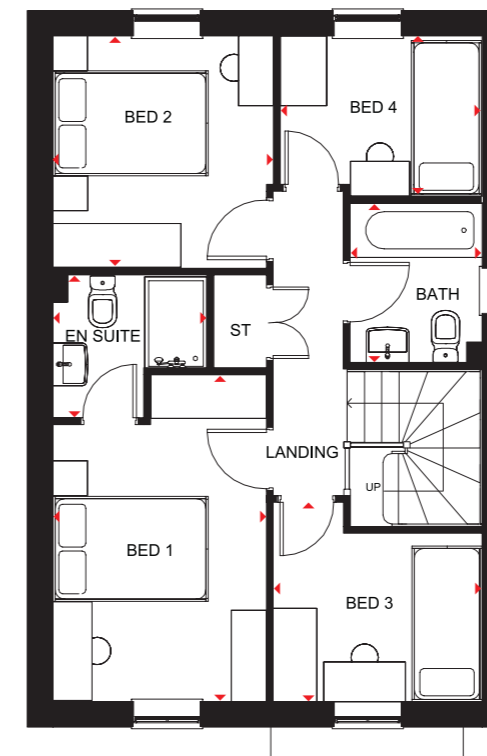
- An ideal family home filled with light through oversized windows
- The large kitchen with dining area and French doors onto the rear garden is a great hub for both the family and to entertain
- The spacious lounge is the perfect place for relaxing in
- Upstairs are two double bedrooms, the main bedroom with en suite, two single bedrooms and a family bathroom



Ground Floor

Lounge	5026 x 3269mm	16'6" x 10'9"
Kitchen/Dining	5520 x 4135mm	18'1" x 13'7"
WC	2164 x 886mm	7'1" x 2'11"

[Approximate dimensions]



First Floor

Bedroom 1	4205 x 2746mm	13'10" x 9'0"
En Suite	1983 x 1835mm	6'6" x 6'0"
Bedroom 2	2986 x 2826mm	9'10" x 9'3"
Bedroom 3	2686 x 2537mm	8'10" x 8'4"
Bedroom 4	2606 x 2060mm	8'7" x 6'9"
Bathroom	2048 x 1698mm	6'9" x 5'7"

[Approximate dimensions]

KEY

B Boiler
ST Store
wm Washing machine space

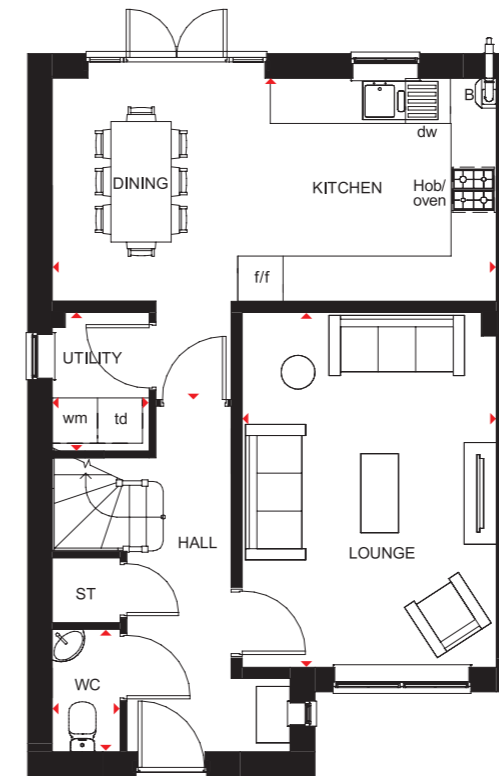
f/f Fridge/freezer space
dw Dishwasher space
◀▶ Dimension location

KINGSLEY

4 BEDROOM DETACHED HOME



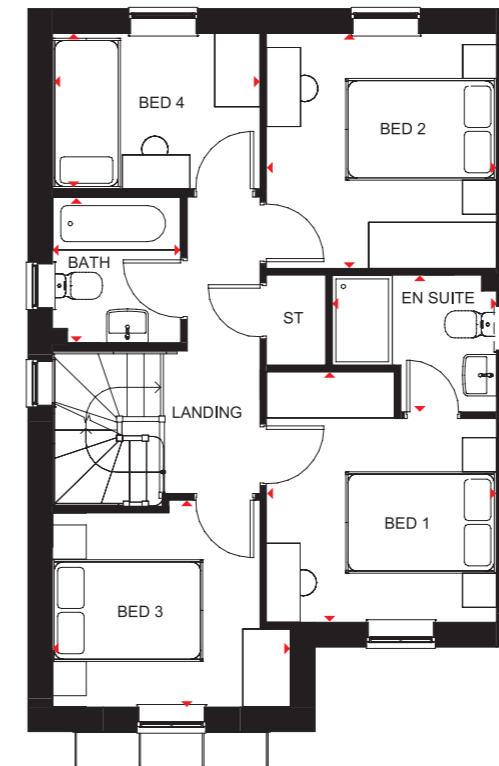
- Bright, airy family home with oversized windows to maximise light
- The large open-plan kitchen has a dining area with French doors leading to the garden. There is also a separate utility room
- The spacious lounge is just the place for the family to relax in
- Upstairs are three double bedrooms, the main bedroom with en suite, one single bedroom and a family bathroom



Ground Floor

Lounge	3370 x 4710mm	11'1" x 15'5"
Kitchen/Dining	5895 x 4268mm	19'4" x 14'0"
WC	904 x 1627mm	3'0" x 5'4"
Utility	1287 x 1841mm	4'3" x 6'0"

[Approximate dimensions]



First Floor

Bedroom 1	3054 x 3328mm	10'0" x 10'11"
En suite	2181 x 1816mm	7'2" x 5'11"
Bedroom 2	3054 x 3123mm	10'0" x 10'3"
Bedroom 3	3160 x 2747mm	10'4" x 9'0"
Bedroom 4	2754 x 2065mm	9'0" x 6'9"
Bathroom	1700 x 1937mm	5'7" x 6'4"

[Approximate dimensions]

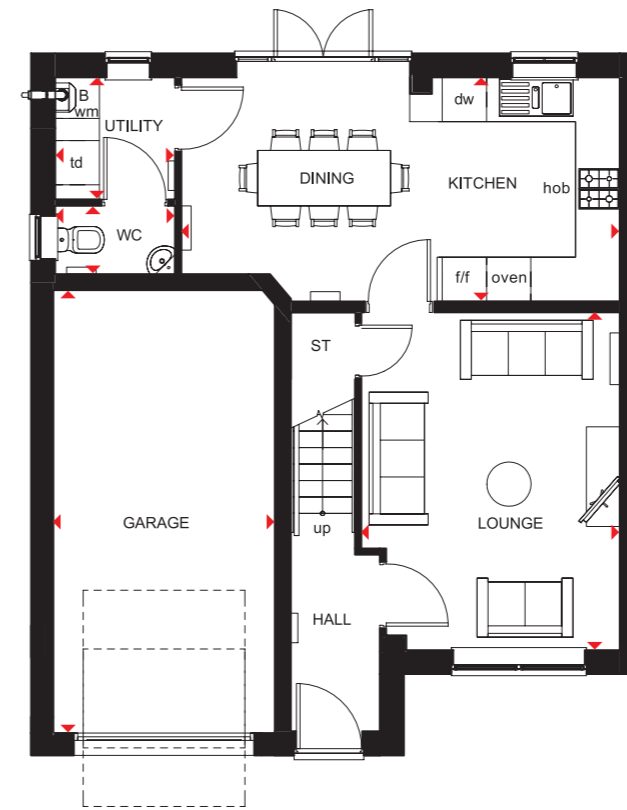
KEY	B	Boiler	f/f	Fridge/freezer space	◀▶	Dimension location
	ST	Store	dw	Dishwasher space		
	wm	Washing machine space	td	Tumble dryer space		

KENNFORD

4 BEDROOM DETACHED HOME



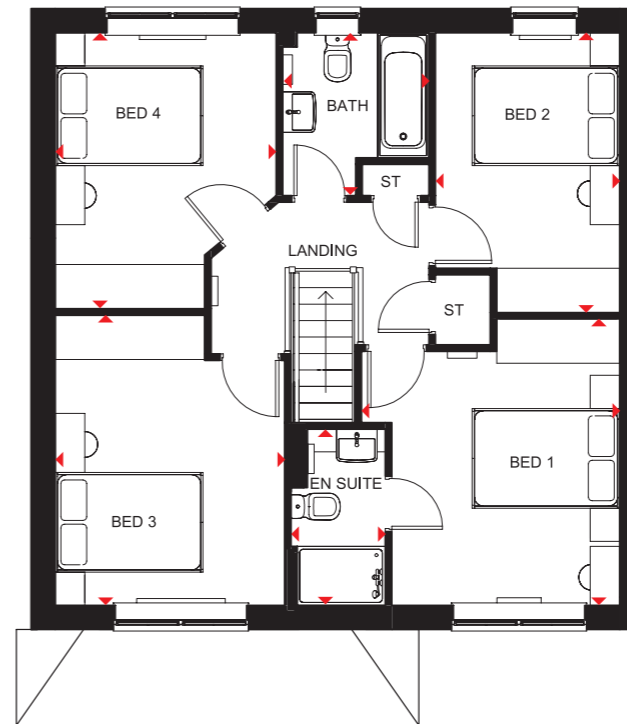
- Spacious and practical family home designed for modern living
- Flexible, open-plan kitchen with dining area and access to the rear garden, and a separate utility room
- Good-sized lounge provides room for all the family to relax in, while an integral garage adds security and convenience
- First floor has four double bedrooms, the main bedroom with en suite, and the family bathroom



Ground Floor

Lounge	4573 x 3500mm	15'0" x 11'6"
Kitchen/Dining	3035 x 5938mm	9'11" x 19'6"
Utility	1652 x 1623mm	5'5" x 5'4"
WC	923 x 1623mm	3'0" x 5'4"
Garage	6000 x 3000mm	19'8" x 9'10"

[Approximate dimensions]



First Floor

Bedroom 1	3500 x 3881mm	11'6" x 12'9"
En Suite	2387 x 1276mm	7'10" x 4'2"
Bedroom 2	2498 x 3791mm	8'2" x 12'5"
Bedroom 3	3931 x 3107mm	12'11" x 10'2"
Bedroom 4	3739 x 2994mm	12'3" x 9'10"
Bathroom	1980 x 2208mm	6'6" x 7'3"

[Approximate dimensions]

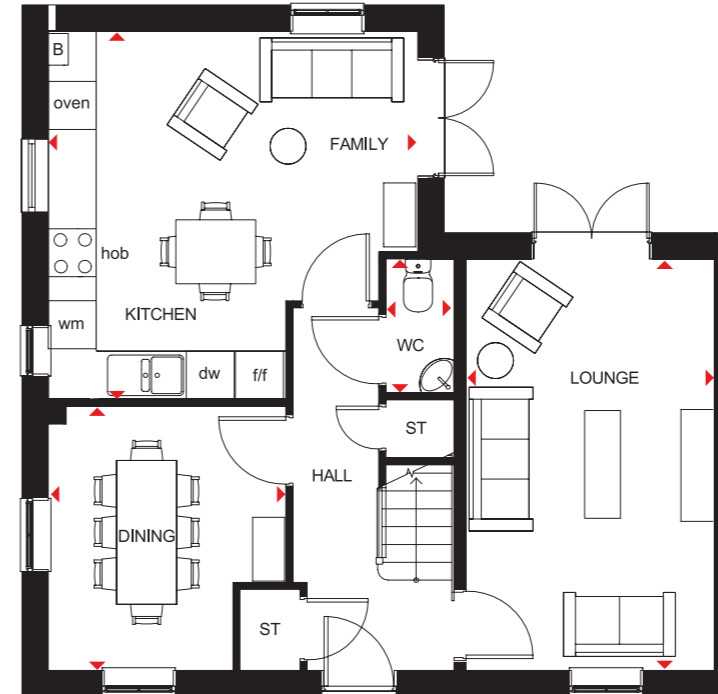
KEY	B	Boiler	f/f	Fridge/freezer space	◀▶	Dimension location
	ST	Store	dw	Dishwasher space		
	wm	Washing machine space	td	Tumble dryer space		

ALDERNEY

4 BEDROOM DETACHED HOME



- A large fitted kitchen with family and breakfast areas provides this spacious home with the ideal hub for all the family
- French doors leading to the rear garden from both the kitchen and the separate lounge give it a bright and airy feeling, and there is a separate dual-aspect dining room
- Upstairs are three double bedrooms, the main bedroom with en suite, a single bedroom and a family bathroom



Ground Floor

Lounge	5148 x 3110mm	16'11" x 10'2"
Kitchen/Family	4623 x 4603mm	15'2" x 15'1"
Dining	3307 x 2972mm	10'10" x 9'9"
WC	1675 x 853mm	5'6" x 2'10"

[Approximate dimensions]



First Floor

Bedroom 1	4623 x 3104mm	15'2" x 10'2"
En Suite	2075 x 1191mm	6'10" x 3'11"
Bedroom 2	4523 x 3115mm	14'10" x 10'3"
Bedroom 3	3724 x 3115mm	12'3" x 10'3"
Bedroom 4	2275 x 2163mm	7'6" x 7'1"
Bathroom	2075 x 1702mm	6'10" x 5'7"

[Approximate dimensions]

KEY B Boiler
ST Store
wm Washing machine space

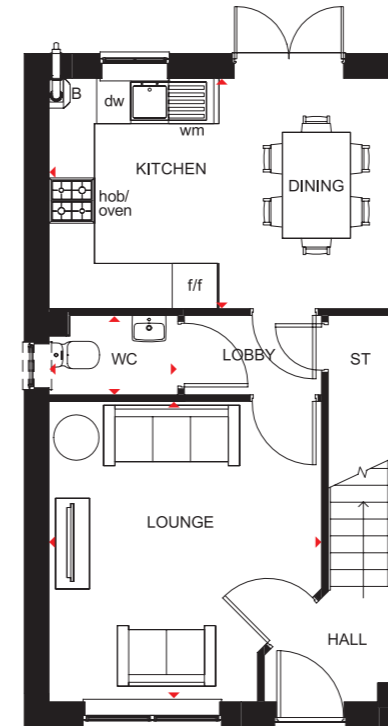
f/f Fridge/freezer space
dw Dishwasher space
◀▶ Dimension location

ELLERTON

3 BEDROOM HOME



- Bright, practical home, ideal for modern family living
- Large, open-plan kitchen with ample dining space has French doors leading to the rear garden
- Good-sized lounge for all the family to relax in
- Upstairs the main bedroom has an en suite shower room, and there is a further double bedroom, a single bedroom and a family bathroom



Ground Floor

Lounge	3605 x 3972mm	11'10" x 13'0"
Kitchen/Dining	4598 x 3048mm	15'1" x 10'0"
WC	1703 x 1050mm	5'7" x 3'5"

(Approximate dimensions)



First Floor

Bedroom 1	3605 x 4138mm	11'10" x 13'7"
En Suite	1918 x 1716mm	6'4" x 5'8"
Bedroom 2	2708 x 3250mm	8'11" x 10'8"
Bedroom 3	2109 x 2932mm	6'11" x 9'7"
Bathroom	1703 x 1917mm	5'7" x 6'3"

(Approximate dimensions)

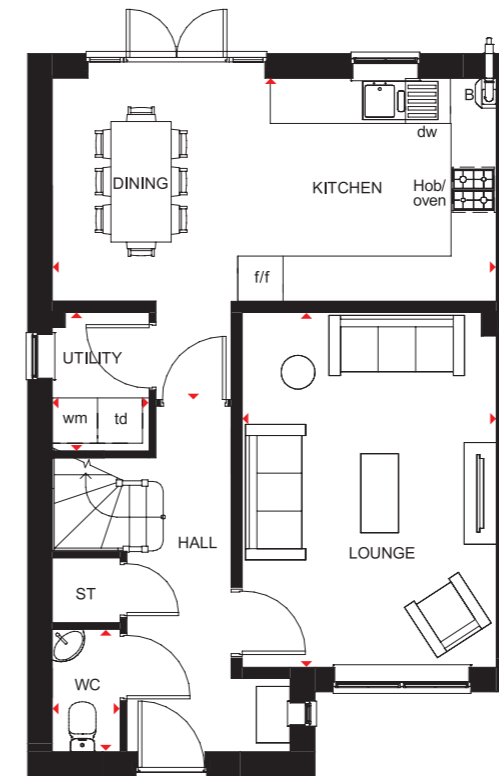
KEY	B Boiler	wm Washing machine space	W Wardrobe
	ST Store	f/f Fridge/freezer space	◀▶ Dimension location
	BH ST Bulkhead store	dw Dishwasher space	

KINGSLEY

4 BEDROOM DETACHED HOME



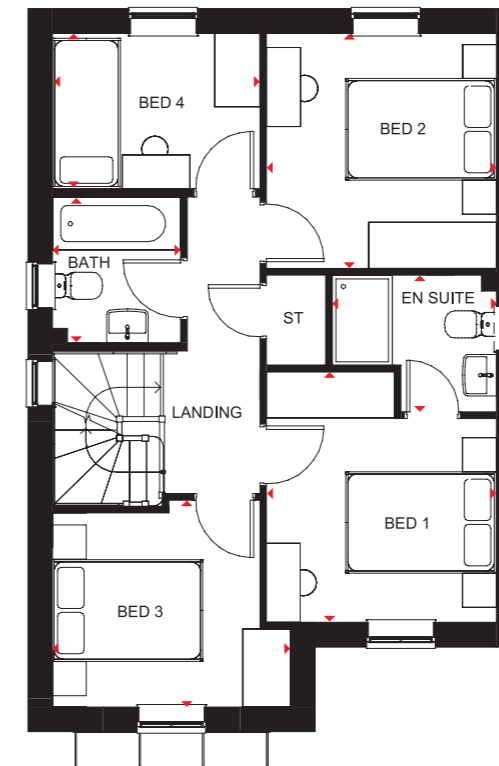
- Bright, airy family home with oversized windows to maximise light
- The large open-plan kitchen has a dining area with French doors leading to the garden. There is also a separate utility room
- The spacious lounge is just the place for the family to relax in
- Upstairs are three double bedrooms, the main bedroom with en suite, one single bedroom and a family bathroom



Ground Floor

Lounge	3370 x 4710mm	11'1" x 15'5"
Kitchen/Dining	5895 x 4268mm	19'4" x 14'0"
WC	904 x 1627mm	3'0" x 5'4"
Utility	1287 x 1841mm	4'3" x 6'0"

[Approximate dimensions]



First Floor

Bedroom 1	3054 x 3328mm	10'0" x 10'11"
En suite	2181 x 1816mm	7'2" x 5'11"
Bedroom 2	3054 x 3123mm	10'0" x 10'3"
Bedroom 3	3160 x 2747mm	10'4" x 9'0"
Bedroom 4	2754 x 2065mm	9'0" x 6'9"
Bathroom	1700 x 1937mm	5'7" x 6'4"

[Approximate dimensions]

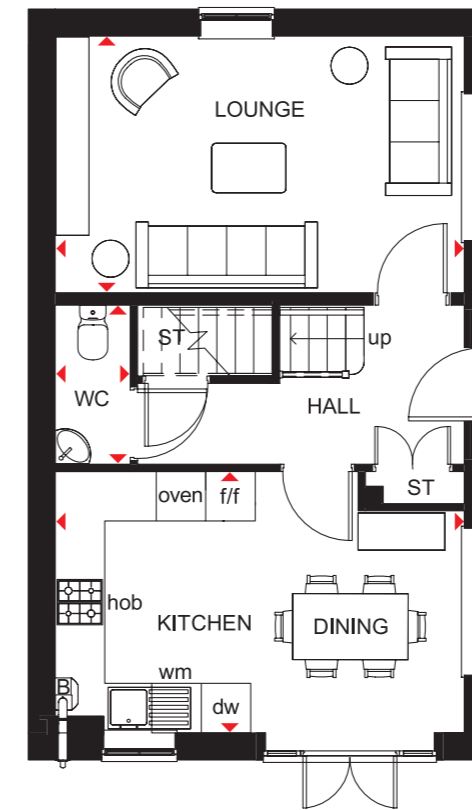
KEY	B	Boiler	f/f	Fridge/freezer space	◀▶	Dimension location
	ST	Store	dw	Dishwasher space		
	wm	Washing machine space	td	Tumble dryer space		

ENNERDALE

3 BEDROOM DETACHED HOME



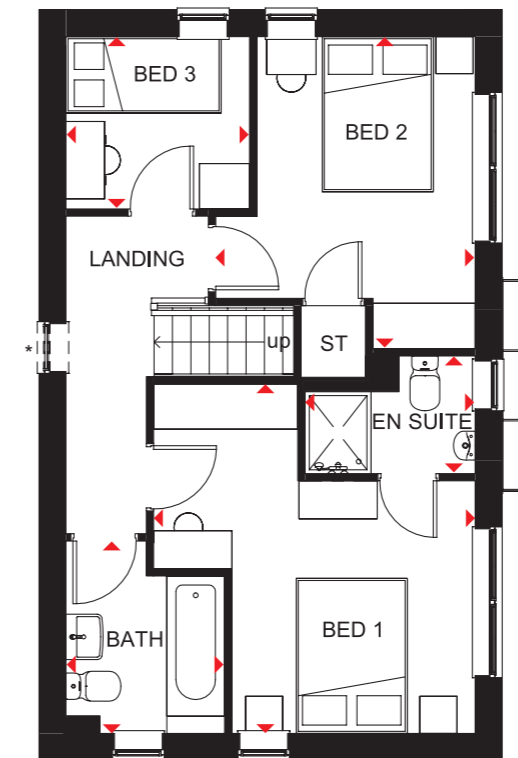
- Light flows into this attractive three bedroom detached home through oversized windows
- A dual-aspect lounge and bright, fully fitted kitchen with dining area opening onto the garden provide space that's ideal for modern living
- Upstairs are two spacious, dual-aspect double bedrooms, the main bedroom with en suite, a single bedroom and family bathroom



Ground Floor

Lounge	4960 x 3112mm	16'3" x 10'3"
Kitchen/Dining	4960 x 3170mm	16'3" x 10'5"
WC	1929 x 911mm	6'4" x 3'0"

[Approximate dimensions]



First Floor

Bedroom 1	4239 x 3898mm	13'11" x 12'9"
En Suite	2061 x 1427mm	6'9" x 4'8"
Bedroom 2	3783 x 3145mm	12'5" x 10'4"
Bedroom 3	2227 x 2089mm	7'4" x 6'10"
Bathroom	2334 x 1924mm	7'8" x 6'4"

[Approximate dimensions]

* Window may be omitted on certain plots. Speak to a Sales Adviser for details on individual plots.

KEY	B	Boiler	f/f	Fridge/freezer space
	ST	Store	dw	Dishwasher space
	wm	Washing machine space	◀▶	Dimension location

THE CONSUMER CODE

The Consumer Code for Home Builders ("the Code"), which came into effect in April 2010, applies to all home builders registered with the UK's main new Home Warranty Bodies: NHBC, Premier Guarantee and LABC Warranty.

The Code gives protection and rights to purchasers of new homes. It requires all new home buyers to be treated fairly and ensure they are fully informed about their purchase before and after they sign the contract.

The aim of the Code is for all new home buyers to:

- be treated fairly
- know what levels of service to expect
- be given reliable information about their purchase and their consumer rights before and after they move in
- know how to access speedy, low-cost dispute resolution arrangements to deal with complaints about breaches of the Code.

The Code reinforces best practice among home builders to encourage a consistently high level of information and customer service. It builds on successful efforts already made by the industry to improve consumer satisfaction in recent years

The Code covers every stage of the home-buying purchase – pre-contract, exchange of contract and during occupation.

As a 5 Star Housebuilder, we* are committed to the Consumer Code for Home Builders. For more information on the Consumer Code for Home Builders, please visit <http://www.consumercode.co.uk/>

**CONSUMER
CODE FOR
HOME BUILDERS**

www.consumercode.co.uk



barratthomes.co.uk

0333 355 8470

Calls to 03 numbers are charged at the same rate as dialing an 01 or 02 number. If your fixed line or mobile service has inclusive minutes to 01/02 numbers, then calls to 03 are counted as part of this inclusive call volume. Non-BT customers and mobile phone users should contact their service providers for information about the cost of calls.



BARRATT
HOMES