



14 Summers Close, Kirkby Mallory

In Excess of £600,000



14 Summers Close

Kirkby Mallory, Leicester

Stunning detached family home in Kirkby Mallory. Generous corner plot with triple garage. Meticulously cared for interior. Landscaped gardens. Smart technology for sustainability. 4 bed, 3 bath, home office. A perfect blend of luxury and eco-friendly living. Council Tax band: F

Tenure: Freehold

EPC Energy Efficiency Rating: C

EPC Environmental Impact Rating: D

- Four Double Bedrooms
- Detached Home On A Tucked Away Corner Plot
- Cul-de-sac Position In The Heart Of Kirby Mallory
- Charming Landscaped Rear Garden
- Triple Detached Garage
- Stunning Bespoke Kitchen Diner
- High Quality Contemporary Bath/Shower Rooms
- Immaculately Presented Throughout
- Solar Panel Array & Battery Plus Car Charging Point
- Smart Heating System



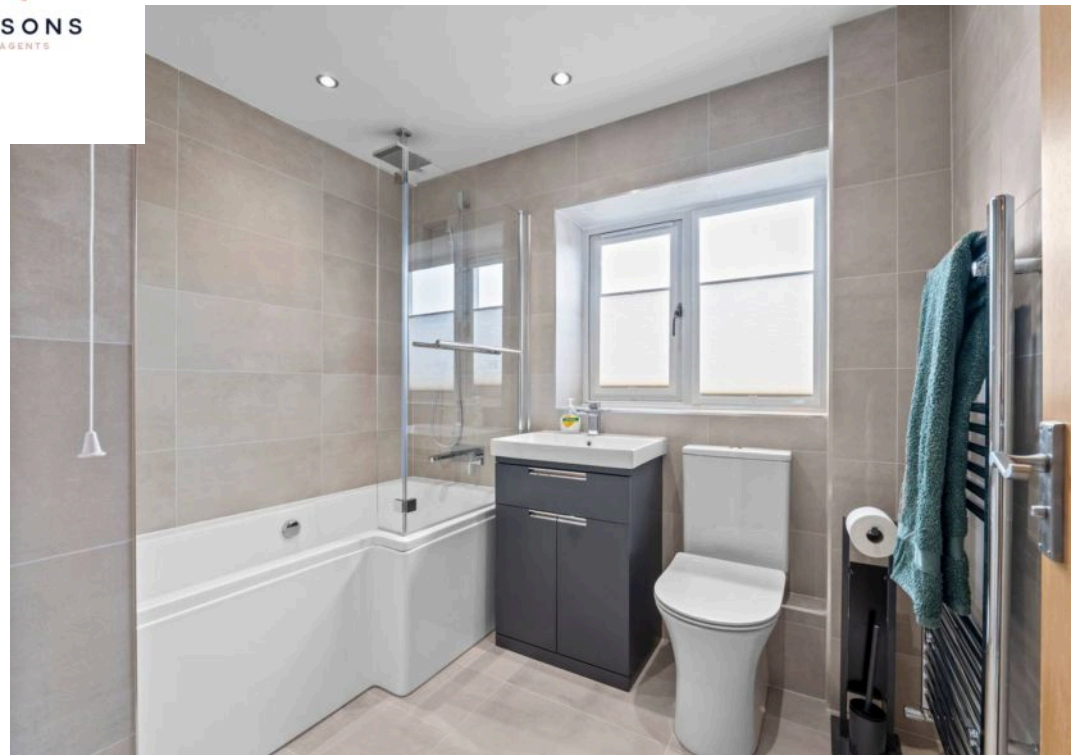


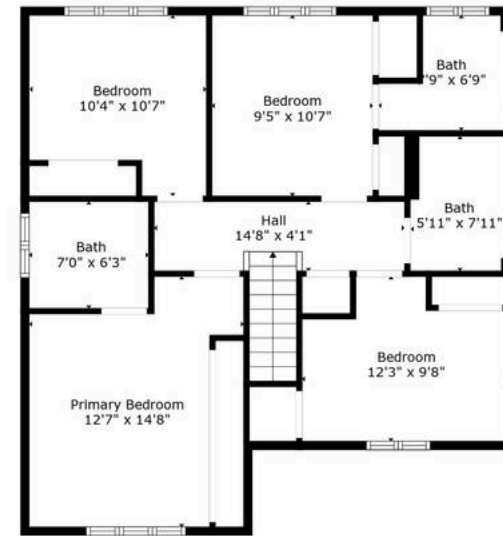
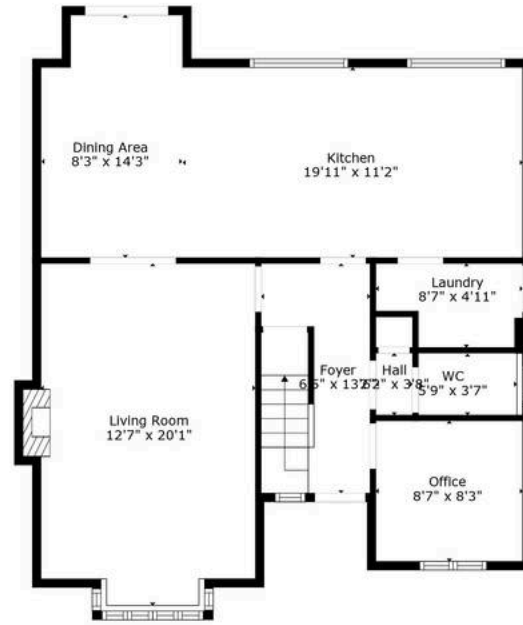

HAMPSONS
ESTATE AGENTS



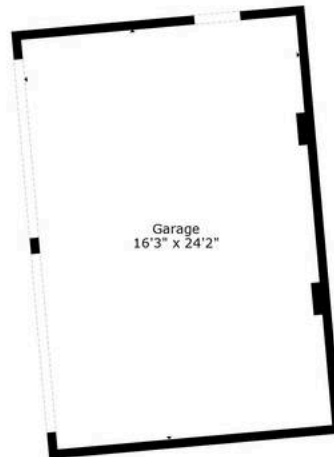



HAMPSONS
ESTATE AGENTS





Floor 2



Floor 1

TOTAL: 1609 sq. ft
 FLOOR 1: 839 sq. ft, FLOOR 2: 770 sq. ft
 EXCLUDED AREAS: GARAGE: 392 sq. ft, FIREPLACE: 5 sq. ft



Hampsons Estate Agents

1 Charnwood Drive, Leicester Forest East, Leicester – LE3 3JT

0116 214 7555

hello@hampsonsestateagents.co.uk

<http://www.hampsonsestateagents.co.uk>

