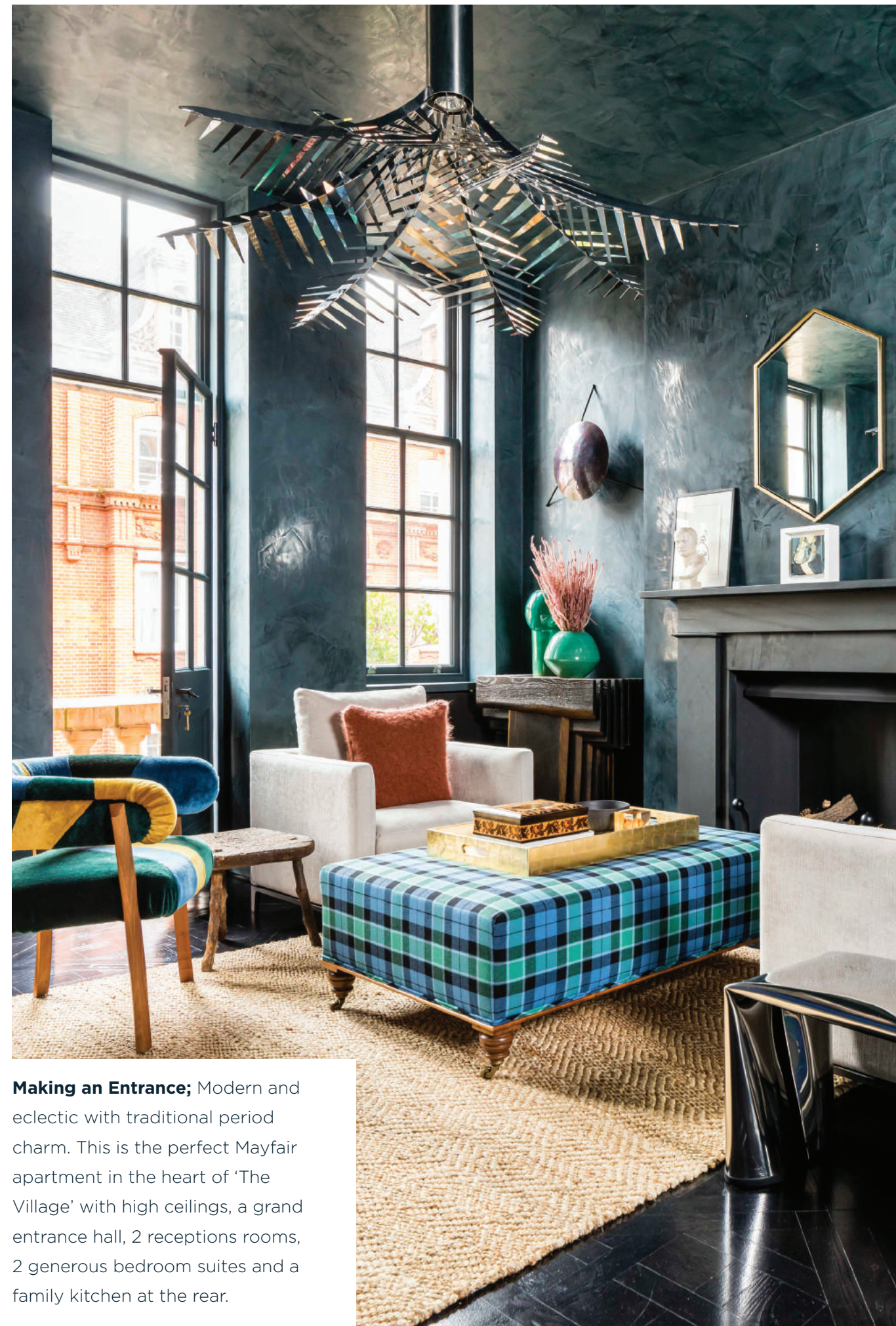


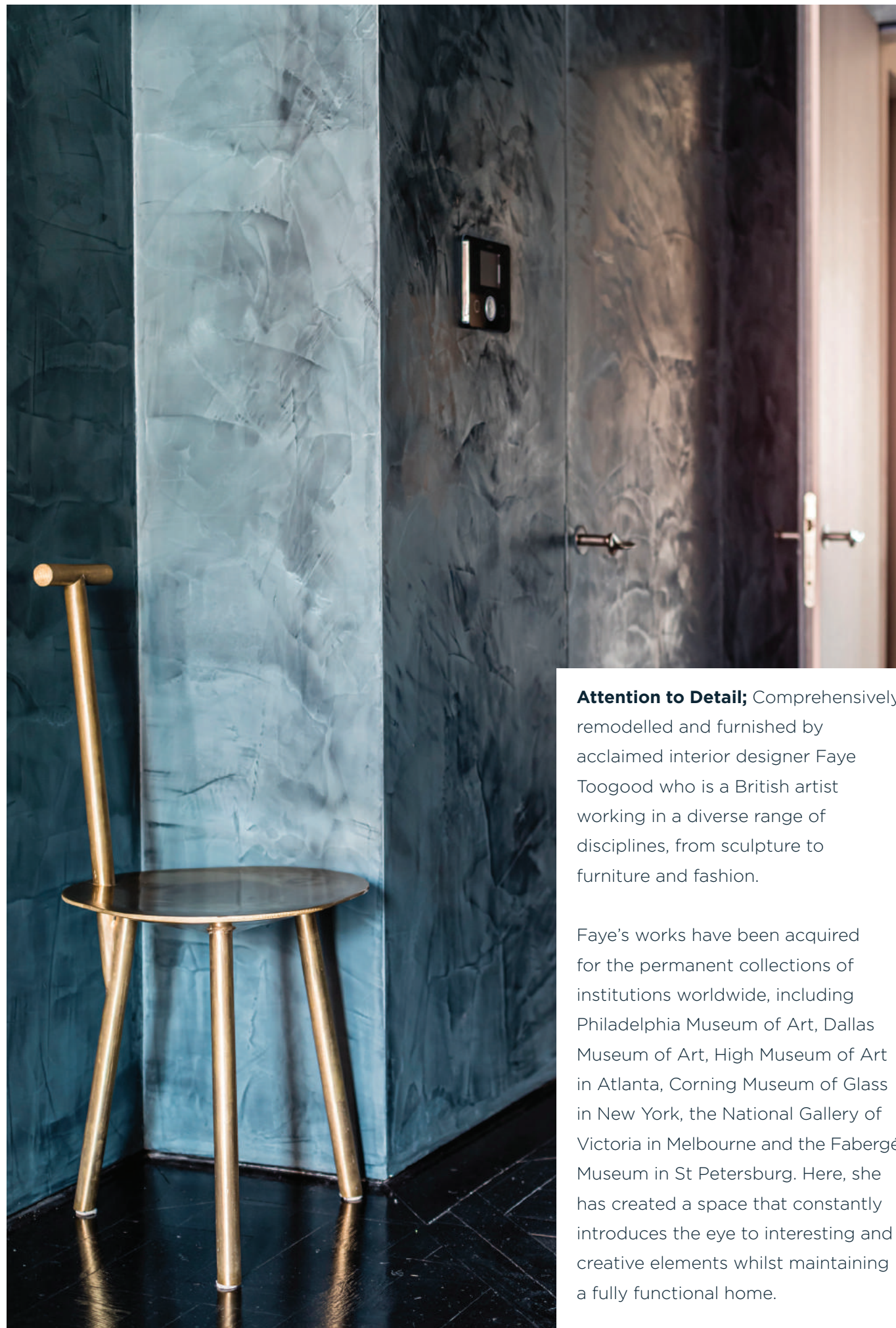


**SOUTH AUDLEY STREET
MAYFAIR W1**



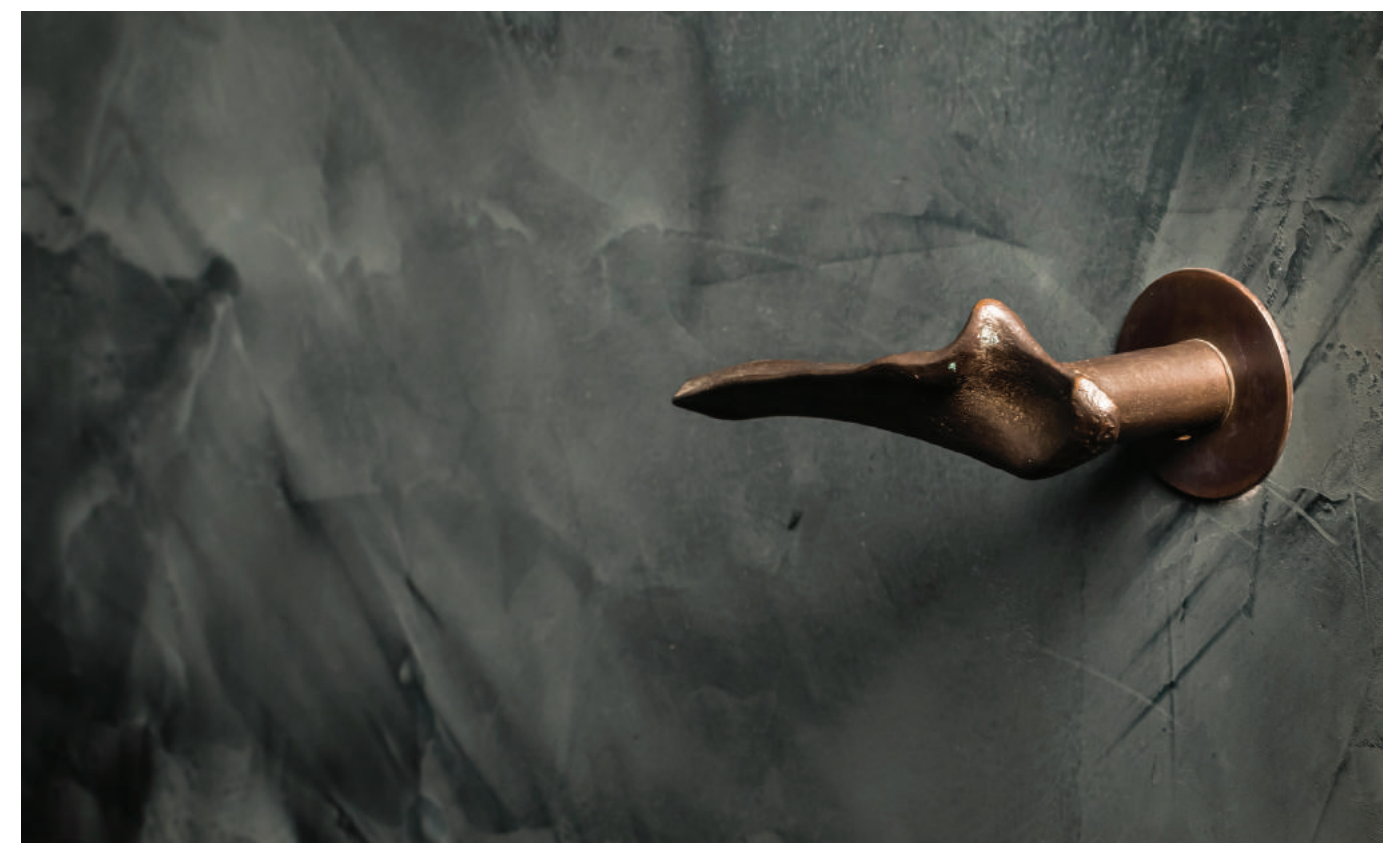
Making an Entrance; Modern and eclectic with traditional period charm. This is the perfect Mayfair apartment in the heart of 'The Village' with high ceilings, a grand entrance hall, 2 reception rooms, 2 generous bedroom suites and a family kitchen at the rear.





Attention to Detail; Comprehensively remodelled and furnished by acclaimed interior designer Faye Toogood who is a British artist working in a diverse range of disciplines, from sculpture to furniture and fashion.

Faye's works have been acquired for the permanent collections of institutions worldwide, including Philadelphia Museum of Art, Dallas Museum of Art, High Museum of Art in Atlanta, Corning Museum of Glass in New York, the National Gallery of Victoria in Melbourne and the Fabergé Museum in St Petersburg. Here, she has created a space that constantly introduces the eye to interesting and creative elements whilst maintaining a fully functional home.





Room with a view; From the majestic balcony, the apartment has a beautiful and historical view that would have changed little in well over 100 years taking in the Grosvenor Chapel, Thomas Goode and across to the hidden Mount Street Gardens.



Master Bedroom + Master bathroom;

Positioned quietly at the rear, the master bedroom is generous in size and has an abundance of storage as well as leading through to a 'show stopping' ensuite shower room.

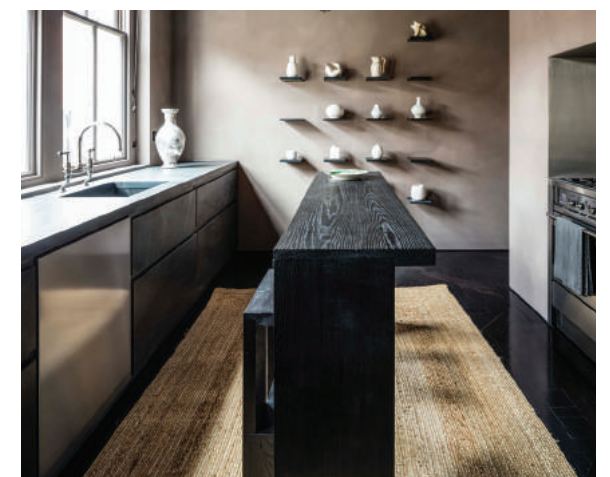




Guest Bedroom + Bathroom;

Positioned at the front of the apartment with views over South Audley Street, the guest bedroom is currently configured as a 3rd reception room/study and whilst the room is perfectly suited to its present use, it could easily be reconfigured as a bedroom and comes with a dramatic ensuite bathroom complete with a freestanding bath.







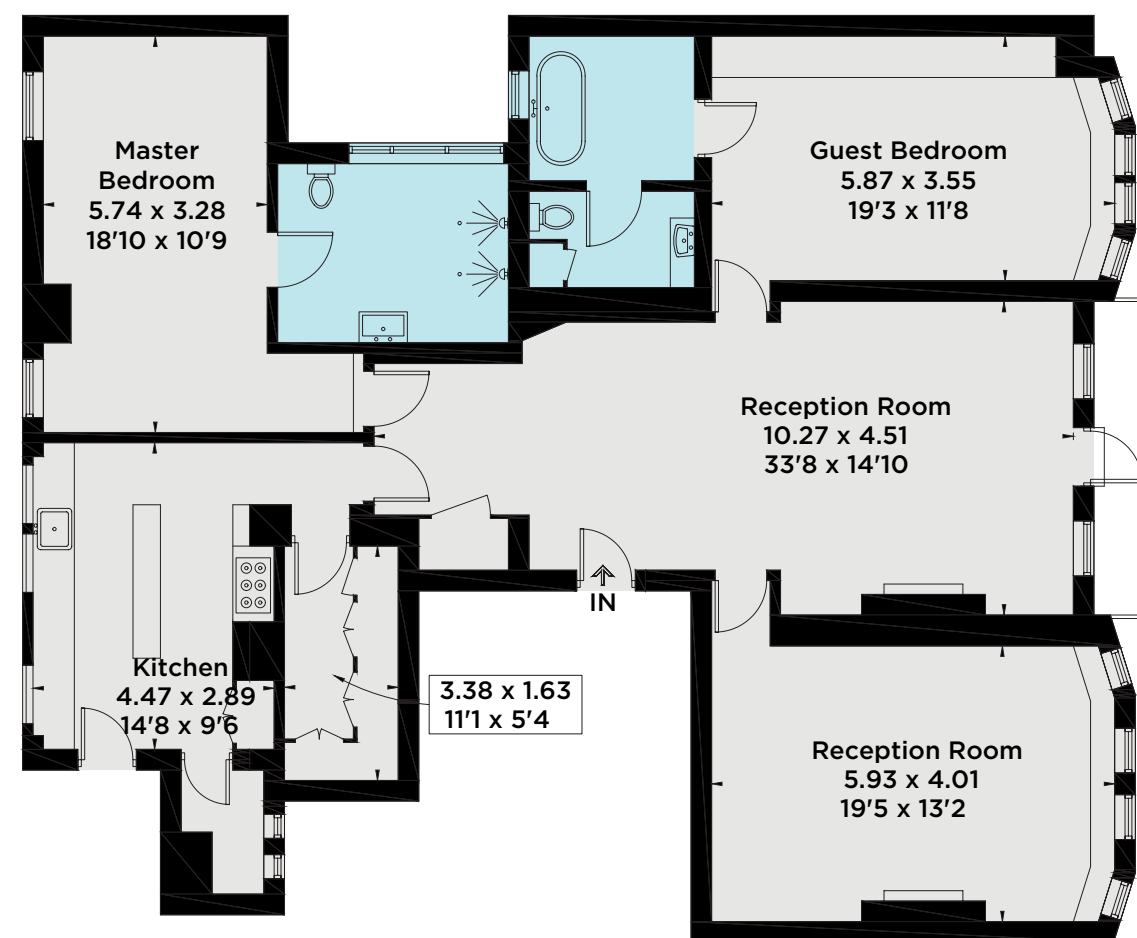
Drawing Room; The formal drawing room offers a warm and elegant space in which to entertain friends or simply sit and reflect.





South Audley Street, W1K

Approximate Gross Internal Area = 157 sq m / 1690 sq ft



Second Floor

ACCOMMODATION

- Large entrance hall
- Formal drawing room
- Family room
- Master bedroom suite
- Guest bedroom suite
- Family kitchen
- Store room
- Balcony
- Passenger lift

Asking Price: £5,895,000

Lease Length: 149 years remaining

Service Charge: TBC

EPC Rating: D

This plan is for layout guidance only. Drawn in accordance with RICS guidelines. Not drawn to scale unless stated. Windows & door openings are approximate. Whilst every care is taken in the preparation of this plan, please check all dimensions, shapes & compass bearings before making any decisions reliant upon them.



020 7409 5087