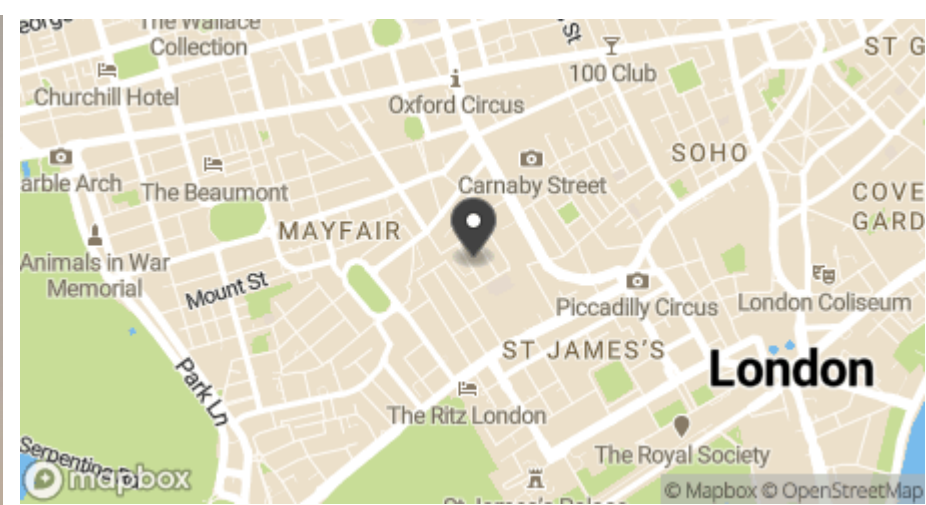




Cork Street, London

A spacious one bedroom apartment in the ever popular Burlington Gate close to Burlington Arcade in Mayfair offering a 995 year lease and 24 hour uniformed concierge.

Asking Price Guide Price £3,950,000



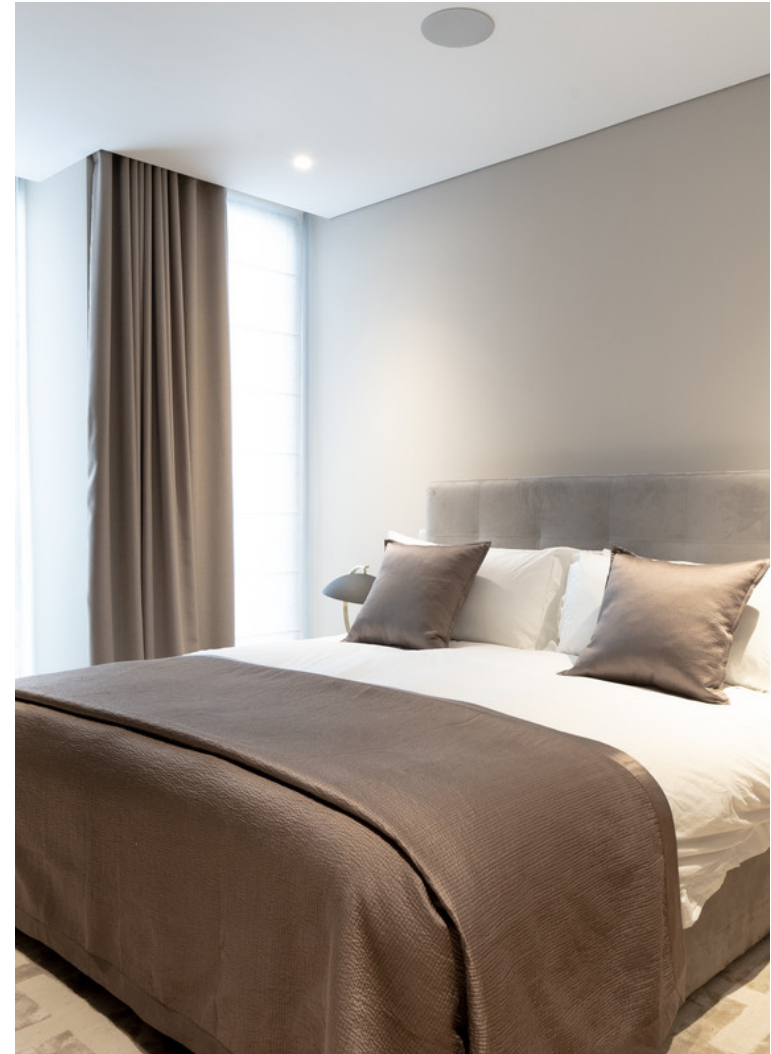
Cork Street is one of London's most sought-after addresses, located just moments from the Royal Academy of Arts, Burlington Arcade Ritz Hotel, Green Park and Buckingham Palace. The property is surrounded by many world-famous eateries, such as Hide Piccadilly and The Wolseley. An array of designer retailers can be found along Old Bond Street and New Bond Street.





The flat has been designed to an exceptional standard throughout with open plan kitchen living area, large bedroom and modern bathroom.

Burlington Gate has created Mayfair's first arcade since the 1930s. The development is made up of 42 apartments with a 24-hour uniformed concierge and fully equipped gymnasium, spa and sauna managed by Bodyism. Mayfair's luxury shopping destination, Bond Street with some of the world's most renowned stores, is just moments away. Green Park Tube Station is also conveniently located close by.



Accommodation

- *Entrance Hall
- *Kitchen
- *Reception/Dining Room
- *Master Bedroom with en suite
- *Walk in Wardrobe
- *Guest wc
- *Lift
- *24 Hour uniformed concierge
- *Secure underground parking

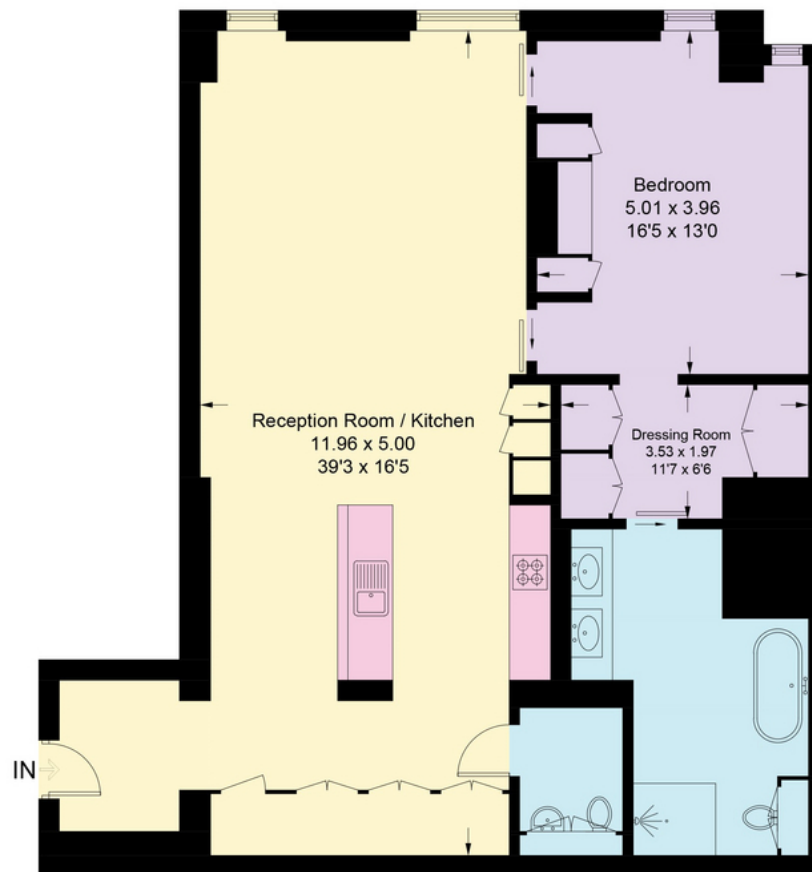
Tenure - leasehold with approximately 995 years remaining

Service Charge: £16,500 per annum

Asking Price - £3,950,000

Burlington

Approximate Gross Internal Area = 109.15 sq m / 1175 sq ft



First Floor

Illustration for identification purposes only, measurements are approximate, not to scale. floorplansUsketch.com © (ID950147)



020 7409 5087

IMPORTANT NOTICE: Clifton Property Partners, their clients and any joint agents give notice that: 1: They are not authorised to make or give any representations or warranties in relation to the property either here or elsewhere, either on their own behalf or on behalf of their client or otherwise. They assume no responsibility for any statement that may be made in these particulars. These particulars do not form part of any offer or contract and must not be relied upon as statements or representations of fact. 2: Any areas, measurements or distances are approximate. The text, photographs and plans are for guidance only and are not necessarily comprehensive. It should not be assumed that the property has all necessary planning, building regulation or other consents and Clifton Property Partners have not tested any services, equipment or facilities. Purchasers must satisfy themselves by inspection or otherwise. 3: This plan is for layout guidance only. Drawn in accordance with RICS guidelines. Not drawn to scale unless stated. Windows & door openings are approximate. Whilst every care is taken in the preparation of this plan, please check all dimensions, shapes & compass bearings before making any decisions reliant upon them.