



Glebe Meadows

Wavendon

A taste of local life

bovishomes.co.uk

**Bovis
Homes** 



Welcome to Glebe Meadows

This exciting new development is on the edge of the pretty Buckinghamshire village of Wavendon, famous for its Stables Theatre live music venue and is less than five miles from vibrant Milton Keynes and 3½ miles from Junction 13. The village has a pub, primary school, a sports pavilion and there are M&S Simply Food and Tesco stores close by.

At Glebe Meadows you can choose from a selection of brand new homes, all designed to meet the needs of today's busy lifestyles.

So if you're looking for a quality new home in an historic village, but close to Milton Keynes, your search ends here!

Getting around

Glebe Meadows is off the A5130, Newport Road, about half a mile from the village centre. The A5130 also joins the A421, leading you to Junction 13 of the M1, four miles away. Northampton, is about 20 miles north on the M1, Luton, 19 miles south, or continue on for the M25 and Central London. Head east on the A421 for Bedford, 17 miles away. It's only two minutes by road, (1.3 miles), to Woburn Sands Railway Station from where London Euston is less than an hour. If travelling by plane, Luton Airport is only a 23-mile drive.

A trip to the shops

Close by at Wavendon Gate there's a M&S Simply Food and it's just five minutes by car to Tesco Express nearby Woburn Sands. The nearby Kingston Centre offers leisure, eateries and High Street stores, or pop into The Centre MK, one of Milton Keynes' major indoor shopping malls. It has more than 140 well-known stores and services including a John Lewis department store and a unique events space providing free, monthly activities. There's also a Marks & Spencer and a Debenhams store. At nearby retail parks you'll find a host of brand giants such as Argos, Homebase, The Range and many more.

Taking time out

The prestigious Stables Theatre is in Wavendon and was founded by jazz greats John Dankworth and Cleo Laine in 1970. Today it hosts live music concerts featuring international artists. Your local pub, The Wavendon Arms, is famed for its food, while the Wavendon Gate Pavilion and cricket ground hosts bowls, athletics, cricket and karate clubs and pre-school sessions. In nearby Milton Keynes, The Venue MK theatre provides live entertainment; there are both Odeon and Cineworld cinemas and of course The National Bowl, an open-air amphitheatre, famous for its rock and pop concerts. For sports fans you'll find everything from gymnastics, table tennis, canoeing and rock-climbing in and around Milton Keynes, as well as gyms and leisure centres, golf and sailing clubs. For a relaxing day out Woburn Safari Park is less than seven miles away, as is historic Woburn Abbey and Gardens.

Education

In 2019 St Mary's Wavendon Church of England Primary School moved to new, purpose-built accommodation at the Eagle Farm development, just off the A421, less than two miles from Glebe Meadows. The school takes pupils aged from four to 11 years, but from September 2020 there are plans to lower the admission age to two-years-old. For senior students up to 18 there's Walton High and Milton Keynes Academy, while Milton Keynes College offers further education with a broad range of courses for students of all ages. There are also several independent schools in the area including Webber independent for pupils aged from four to 18 and Milton Keynes Preparatory School, taking babies from two months to children of 11 years-old.



Glebe Meadows

Wavendon,
Buckinghamshire MK17 8AB

From M1 (J14)

- At the roundabout take the exit towards A509 Milton Keynes
- At the next roundabout take the 2nd exit A509
- At the next roundabout take the 1st exit onto A4146 Tongwell Street (V11)
- At the next roundabout take the 2nd exit onto A4146 Tongwell Street (V11)
- At the next roundabout take the 1st exit A421
- At the next roundabout take the 3rd exit on to Newport Road
- After a short distance turn left into Glebe Meadows

From M1 (J13) / A421 Bedford

- At the roundabout take the exit on to the A421 towards Milton Keynes
- Continue straight at the next two roundabouts
- At the next roundabout take the 1st exit on to Newport Road
- After a short distance turn left into Glebe Meadows



When you have finished with this leaflet please recycle it.

Cover photograph of Apsley. Not view from the development. The streetscene shown above has been produced for illustrative purposes only, please check the details of the homes you are interested in with the sales advisor.

Bovis Homes Limited, Northern Home Counties region
Building 7, Caldecotte Lake Business Park, Milton Keynes, Buckinghamshire MK7 8JU. Telephone: 01908 088 500

Produced by the Bovis Homes Graphic Design Department.

MWAVE GD53938 / 03.20



So much choice...

Part of the excitement of buying a new home is the thrill of being the first person to live in the property and having a brand new contemporary kitchen and modern bathroom. Our premium brand partners ensure that all of our fixtures and fittings comply with the latest Government building regulations and only branded appliances are installed in your new home.

Once you know what specification comes included, you'll have a choice from our specially selected tiles for your kitchen and bathrooms, as well as kitchen worktops and cupboard doors. You can then use the Bovis Homes **Select** brochure to add the finishing touches to your home to make it extra special for you!

From personalising your bathrooms with stunning ceramics, or adding smooth sliding wardrobes to your master bedroom, there are a wide range of additional options and upgrades available.

The availability of items is subject to the stage of build, and can vary by development and house type. Our sales consultants will be happy to provide guidance.



Glebe Meadows

Wavendon



When you have finished with this leaflet please recycle it.

The specification shown in this leaflet is correct at the time of going to press. Bovis Homes is continually reviewing and updating the specification on all housetypes and therefore reserves the right to change specification details. Photographs depict a typical Bovis Homes interior and may include optional upgrades. For full details regarding current specification and finishes, for the plots you are interested in, please refer to our sales consultant.

Produced by the Vistry Group Design Studio.

MWAVE GD56668 / 09.20



Specification

bovishomes.co.uk



Glebe Meadows

Wavendon



Use this guide to see what features are included in your new home. Your sales consultant will be happy to discuss the **Select** range of extras available.

	2 bedroom The Hawthorn The Buckthorn	3 bedroom The Magnolia The Hazel The Spruce The Spruce II The Cypress The Poplar	4 bedroom The Chestnut II
--	--	--	------------------------------

Kitchen

Choice of fitted kitchen (doors and worktops)*	■	■	■	■	■	■	■
Stainless steel sink and drainer (single bowl) with chrome mixer tap	■	■					
Stainless steel sink and drainer (single and a half bowl) with chrome mixer tap			■	■	■	■	■
Stainless steel sink and drainer (single bowl) with chrome mixer tap in utility					■		■
Hob with built-in oven (high level or under), with splashback and chimney hood	■	■	■	■	■	■	■
Fridge / freezer space	■	■	■	■	■	■	
Integrated 50 / 50 fridge freezer							■
Space for integrated dishwasher with plumbing and electrics (with removable base unit)	■	■	■	■	■	■	■
Space for washing machine with plumbing and electrics in kitchen or utility	■	■	■	■	■	■	■

Bathrooms and en suite(s)

Ideal Standard contemporary white sanitary ware suite	■	■	■	■	■	■	■
Thermostatic shower with shower tray and glass enclosure to en suite			■	■	■	■	■
Handheld hair wash attachment to bath			■	■	■	■	■
Thermostatic shower over the bath with glazed screen	■	■					
Choice of Porcelanosa wall tiling (full-height over bath)*	■	■					
Choice of Porcelanosa wall tiling (half-height over bath, and full-height to shower cubicle)*			■	■	■	■	■
Shaver socket / toothbrush charger to bathroom or en suite	■	■	■	■	■	■	■
Chrome towel warmer in bathroom and en suite (where applicable)							■

Bedrooms

Built-in wardrobe(s) to bedroom 1 (with shelf and rail)							■
---	--	--	--	--	--	--	---

	2 bedroom The Hawthorn The Buckthorn	3 bedroom The Magnolia The Hazel The Spruce The Spruce II The Cypress The Poplar	4 bedroom The Chestnut II
--	--	--	------------------------------

Doors and Windows

Front door with multi-point security locking system and security chain	■	■	■	■	■	■	■
PVCu double glazing to windows	■	■	■	■	■	■	■
Double glazed PVCu French doors	■						
Powder coated aluminium double glazed bi-fold doors							■
White painted internal doors with chrome lever handles	■	■	■	■	■	■	■
Paving outside French / bi-fold door (where applicable)	■						■

General

White painted walls and smooth white ceilings	■	■	■	■	■	■	■
Multi-media point in sitting room	■	■	■	■	■	■	■
Master telephone socket	■	■	■	■	■	■	■
Gas central heating with wall mounted combi-boiler, programme selector and room thermostat(s)	■	■	■	■	■	■	■
Thermostatic valves to all radiators (with the exception of rooms with separate thermostat control)	■	■	■	■	■	■	■
Front porch light	■	■	■	■	■	■	■
Pre-wired for rear garden floodlighting option	■						■
Mains wired smoke detectors with battery back-up	■	■	■	■	■	■	■
Power and lighting to 'on plot' garage (where applicable)			■	■	■	■	■
Landscaped front gardens (where applicable)	■	■	■	■	■	■	■
NHBC Buildmark cover	■	■	■	■	■	■	■
First two years' customer service support from Bovis Homes	■	■	■	■	■	■	■

■ Fitted as Standard - included in the property

* Choice is from Bovis Homes Standard range and subject to stage of construction



Glebe Meadows

Wavendon

Development plan

bovishomes.co.uk

**Bovis
Homes** 

Glebe Meadows

Wavendon

1 and 2 bedroom apartments

Lea Manor

2 bedroom apartments

Glebe Crescent

Meadow Court

2 bedroom home

The Buckthorn

The Hawthorn

3 bedroom home

The Hazel

The Spruce

The Spruce II

The Cypress

The Magnolia

The Poplar

4 bedroom home

The Chestnut II

Affordable housing

bcp bin collection point

ss substation

v visitor space

* parking for allotments



Glebe Meadows

Wavendon,
Buckinghamshire MK17 8AB

From M1 (J14)

- At the roundabout take the exit towards A509 Milton Keynes
- At the next roundabout take the 2nd exit A509
- At the next roundabout take the 1st exit onto A4146 Tongwell Street (V11)
- At the next roundabout take the 2nd exit onto A4146 Tongwell Street (V11)
- At the next roundabout take the 1st exit A421
- At the next roundabout take the 3rd exit on to Newport Road
- After a short distance turn left into Glebe Meadows

From M1 (J13) / A421 Bedford

- At the roundabout take the exit on to the A421 towards Milton Keynes
- Continue straight at the next two roundabouts
- At the next roundabout take the 1st exit on to Newport Road
- After a short distance turn left into Glebe Meadows



When you have finished with this leaflet please recycle it.

This plan has been produced for home identification purposes only and may be subject to change. Please check the details of your chosen plot and house type with the sales consultant. Development layout plan correct at time of going to print.

Bovis Homes Limited, Northern Home Counties region
Building 7, Caldecotte Lake Business Park, Milton Keynes, Buckinghamshire MK7 8JU. Telephone: 01908 088 500

Produced by the Vistry Group Design Studio.
MWAVE GD56495 / 09.20





The Buckthorn

2 bedroom home

bovishomes.co.uk

**Bovis
Homes** 

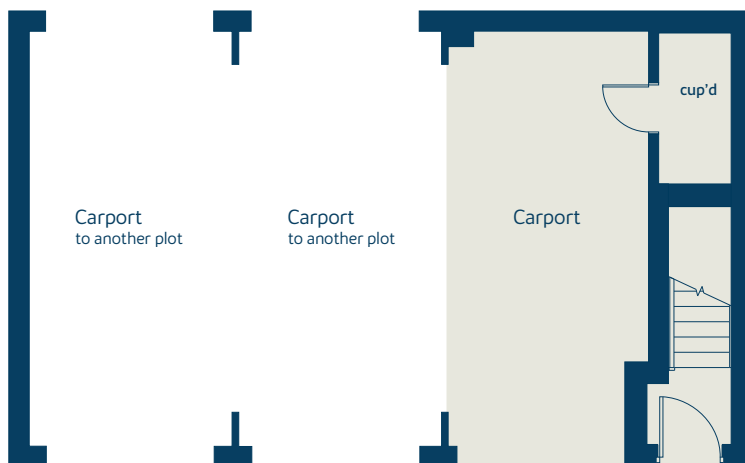
The Buckthorn

2 bedroom home

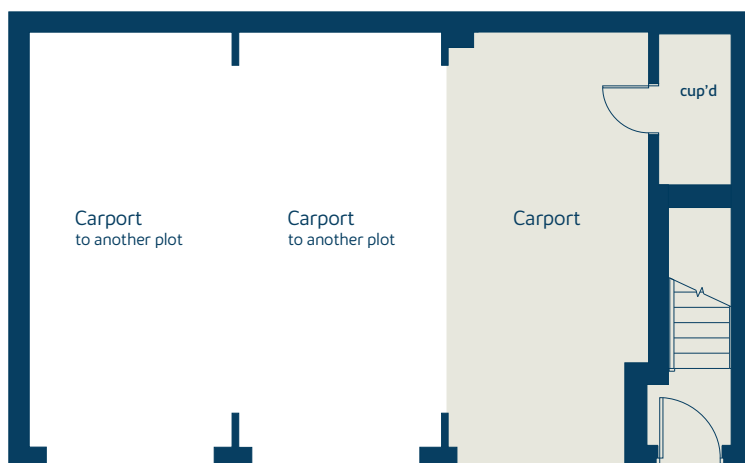
First floor



Ground floor



to plot 22



to plot 97

First floor	metres	feet / inches
Kitchen / dining area	3.99 x 1.98	13' 1" x 6' 6"
Sitting room	4.63 x 4.12	15' 3" x 13' 6"
Bedroom 1	4.66 x 2.96	15' 4" x 9' 9"
Bedroom 2	4.07 x 3.07	13' 4" x 10' 1"

The Buckthorn | XF201 P2 vt MWAVE |

This floorplan has been produced for illustrative purposes only. Room sizes shown are between arrow points as indicated on plan. The dimensions have tolerances of + or -50mm and should not be used other than for general guidance. If specific dimensions are required, enquiries should be made to the sales advisor.

* Window type to be confirmed. Please see sales advisor for further details.

ovn	oven	ffzs	fridge freezer space
h	hob	cup'd	cupboard
ws	washing machine space	◀ ▶	measuring points

Please refer to the sales consultant for specific plot details as the illustrations shown are computer generated impressions of how the property may look so are indicative only. External details or finishes may vary on individual plots and homes may be built in either detached or attached styles depending on the development layout. Exact specifications, window styles and whether a property is left or right handed may differ from plot to plot.

The floorplans shown are not to scale. Measurements are based on the original drawings. Slight variations may occur during construction.

Produced by the Vistry Group Design Studio.

When you have finished with this leaflet please recycle it.

MWAVE GD53938 / 03.20



The Hawthorn

2 bedroom home

bovishomes.co.uk

**Bovis
Homes** 

The Hawthorn

2 bedroom home

Ground floor	metres	feet / inches
Kitchen	3.73 x 2.92	12' 2" x 9' 6"
Sitting / dining area	4.12 x 4.05	13' 6" x 13' 3"

First floor

Bedroom 1	4.07 x 2.69	13' 4" x 8' 10"
Bedroom 2	4.07 x 2.82	13' 4" x 9' 3"

The Hawthorn | X203 P7 vt MWAVE |

This floorplan has been produced for illustrative purposes only. Room sizes shown are between arrow points as indicated on plan. The dimensions have tolerances of + or -50mm and should not be used other than for general guidance. If specific dimensions are required, enquiries should be made to the sales advisor.

* Windows apply to selected plots only. Please see sales advisor for further details.

ovn	oven	ffzs	fridge freezer space
h	hob	cup'd	cupboard
ds	dishwasher space	◀ ▶	measuring points
ws	washing machine space		

Please refer to the sales consultant for specific plot details as the illustrations shown are computer generated impressions of how the property may look so are indicative only. External details or finishes may vary on individual plots and homes may be built in either detached or attached styles depending on the development layout. Exact specifications, window styles and whether a property is left or right handed may differ from plot to plot.

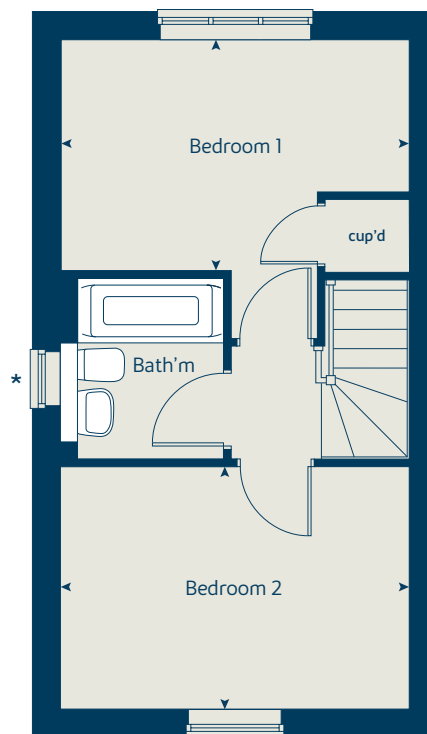
The floorplans shown are not to scale. Measurements are based on the original drawings. Slight variations may occur during construction.

Produced by the Vistry Group Design Studio.

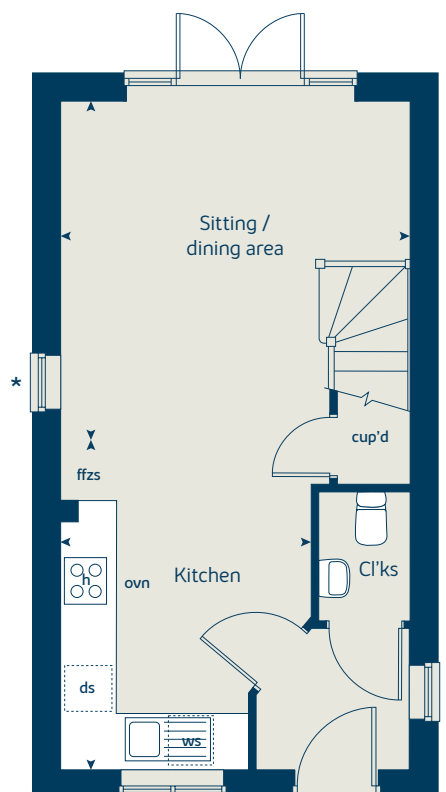
When you have finished with this leaflet please recycle it.

MWAVE GD53938 / 03.20

First floor



Ground floor





The Hazel

3 bedroom home

bovishomes.co.uk



The Hazel

3 bedroom home

Ground floor	metres	feet / inches
Kitchen / dining room	5.19 x 2.99	17' 0" x 9' 9"
Sitting room	4.17 x 3.66	13' 8" x 12' 0"

First floor

Bedroom 1	3.54 x 2.97	11' 7" x 9' 8"
Bedroom 2	3.04 x 2.95	9' 11" x 9' 8"
Bedroom 3	2.44 x 2.15	8' 0" x 7' 0"

The Hazel | X305 P5 vt MWAVE |

This floorplan has been produced for illustrative purposes only. Room sizes shown are between arrow points as indicated on plan. The dimensions have tolerances of + or -50mm and should not be used other than for general guidance. If specific dimensions are required, enquiries should be made to the sales consultant.

* Windows apply to selected plots only. Please see sales consultant for further details.

ovn	oven	ffzs	fridge freezer space
h	hob	cup'd	cupboard
ds	dishwasher space	◀ ▶	measuring points
ws	washing machine space		

Please refer to the sales consultant for specific plot details as the illustrations shown are computer generated impressions of how the property may look so are indicative only. External details or finishes may vary on individual plots and homes may be built in either detached or attached styles depending on the development layout. Exact specifications, window styles and whether a property is left or right handed may differ from plot to plot.

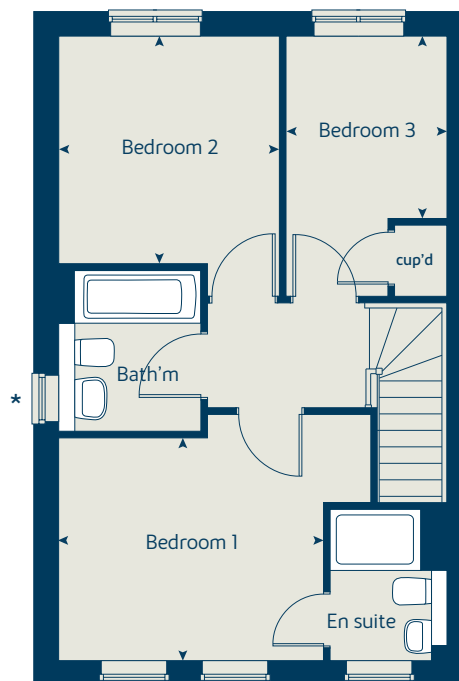
The floorplans shown are not to scale. Measurements are based on the original drawings. Slight variations may occur during construction.

Produced by the Vistry Group Design Studio.

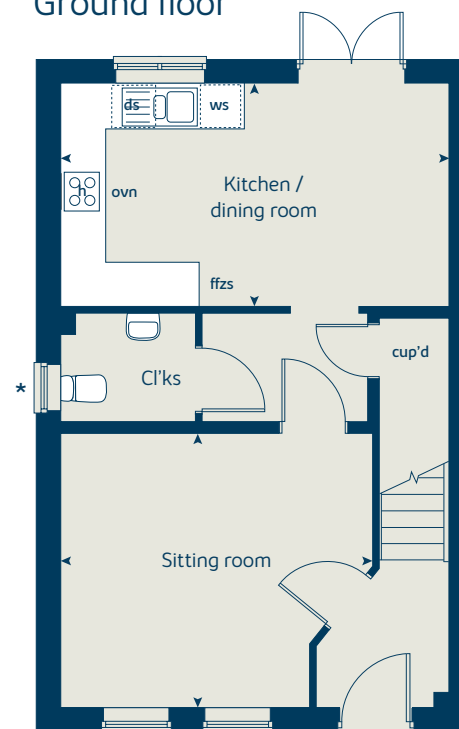
When you have finished with this leaflet please recycle it.

MWAVE GD56448 / 08.20

First floor



Ground floor





The Spruce II

3 bedroom home

bovishomes.co.uk

**Bovis
Homes** 

The Spruce II

3 bedroom home

Ground floor	metres	feet / inches
Kitchen	3.55 x 2.41	11' 8" x 7' 11"
Dining area	3.89 x 3.12	12' 9" x 10' 3"
Sitting room	5.53 x 3.32	18' 2" x 10' 11"

First floor

Bedroom 1	4.23 x 3.39	13' 11" x 11' 2"
Bedroom 2	3.61 x 3.21	11' 10" x 10' 6"
Bedroom 3	3.61 x 2.25	11' 10" x 7' 4"

The Spruce II | X307V MWAVE |

This floorplan has been produced for illustrative purposes only. Room sizes shown are between arrow points as indicated on plan. The dimensions have tolerances of + or -50mm and should not be used other than for general guidance. If specific dimensions are required, enquiries should be made to the sales consultant.

* Windows apply to selected plots only. Please see sales consultant for further details.

ovn	oven	ffzs	fridge freezer space
h	hob	cup'd	cupboard
ds	dishwasher space	◀ ▶	measuring points
ws	washing machine space		

Please refer to the sales consultant for specific plot details as the illustrations shown are computer generated impressions of how the property may look so are indicative only. External details or finishes may vary on individual plots and homes may be built in either detached or attached styles depending on the development layout. Exact specifications, window styles and whether a property is left or right handed may differ from plot to plot.

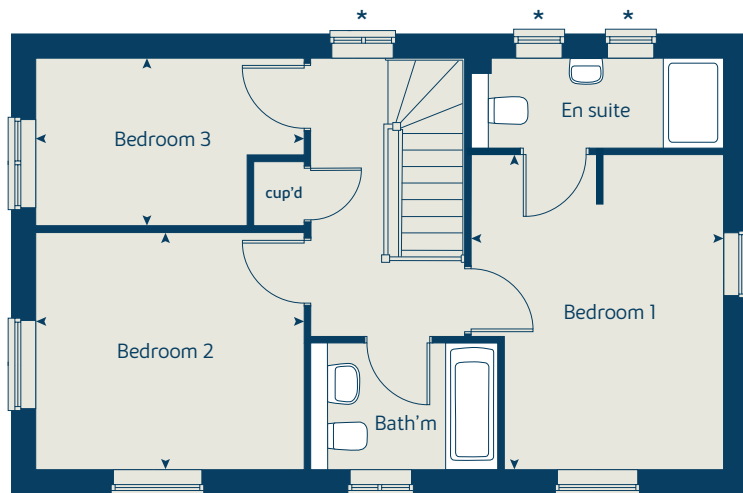
The floorplans shown are not to scale. Measurements are based on the original drawings. Slight variations may occur during construction.

Produced by the Vistry Group Design Studio.

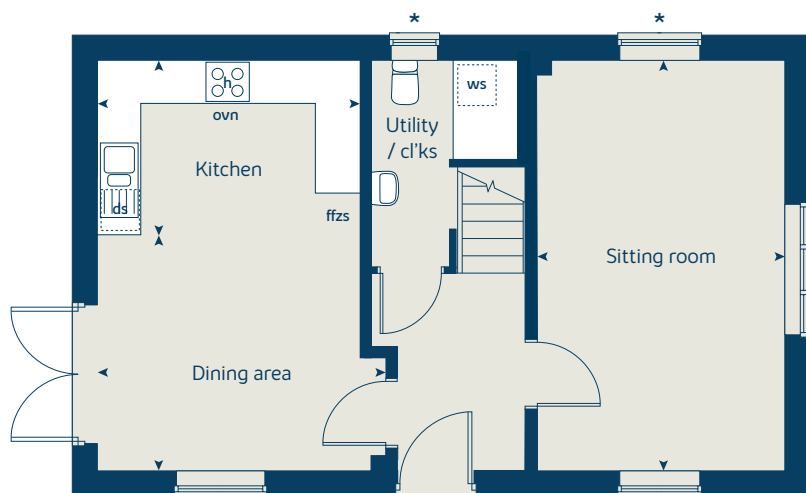
When you have finished with this leaflet please recycle it.

MWAVE GD56668 / 09.20

First floor



Ground floor





The Cypress

3 bedroom home

bovishomes.co.uk

**Bovis
Homes** 

The Cypress

3 bedroom home

Ground floor	metres	feet / inches
Kitchen / dining area	5.52 x 3.12	18' 1" x 10' 2"
Sitting room	4.33 x 3.40	14' 2" x 11' 1"

First floor

Bedroom 1	3.28 x 2.77	10' 9" x 9' 1"
Bedroom 2	4.09 x 3.28	13' 5" x 10' 9"
Bedroom 3	3.54 x 2.16	11' 7" x 7' 1"

The Cypress | X308 (IF) P7 vt MWAVE |

This floorplan has been produced for illustrative purposes only. Room sizes shown are between arrow points as indicated on plan. The dimensions have tolerances of + or -50mm and should not be used other than for general guidance. If specific dimensions are required, enquiries should be made to the sales consultant.

ovn	oven	ffzs	fridge freezer space
h	hob	cup'd	cupboard
ds	dishwasher space	< >	measuring points
ws	washing machine space		

Please refer to the sales consultant for specific plot details as the illustrations shown are computer generated impressions of how the property may look so are indicative only. External details or finishes may vary on individual plots and homes may be built in either detached or attached styles depending on the development layout. Exact specifications, window styles and whether a property is left or right handed may differ from plot to plot.

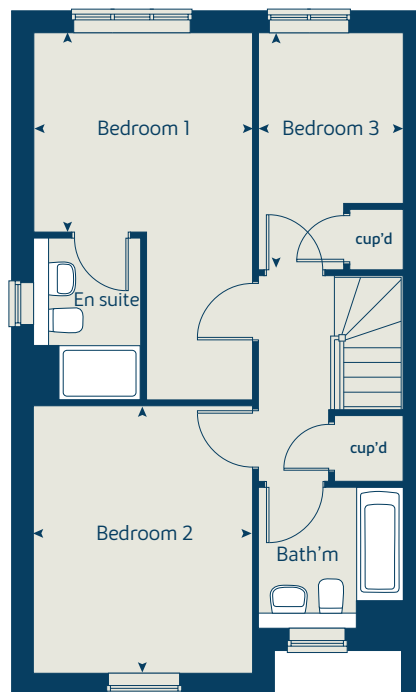
The floorplans shown are not to scale. Measurements are based on the original drawings. Slight variations may occur during construction.

Produced by the Vistry Group Design Studio.

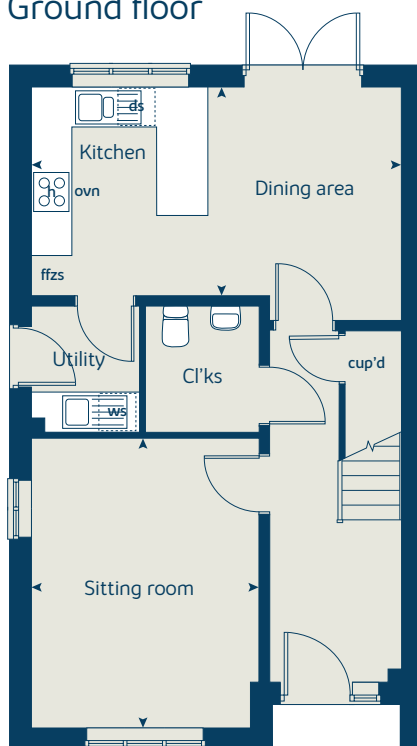
When you have finished with this leaflet please recycle it.

MWAVE GD56448 / 08.20

First floor



Ground floor





The Poplar

3 bedroom home

bovishomes.co.uk

**Bovis
Homes** 

The Poplar

3 bedroom home

Ground floor	metres	feet / inches
Kitchen / dining area	4.74 x 4.46	15' 6" x 14' 7"
Study	2.57 x 2.13	8' 5" x 6' 11"

First floor	metres	feet / inches
Sitting room	4.74 x 3.43	15' 6" x 11' 3"
Bedroom 3	4.74 x 2.57	15' 6" x 8' 5"

Second floor	metres	feet / inches
Bedroom 1	4.74 x 3.46	15' 6" x 11' 4"
Bedroom 2	4.74 x 2.54	15' 6" x 8' 4"

The Poplar | X310 P3 vt MWAVE |

This floorplan has been produced for illustrative purposes only. Room sizes shown are between arrow points as indicated on plan. The dimensions have tolerances of + or -50mm and should not be used other than for general guidance. If specific dimensions are required, enquiries should be made to the sales advisor.

* Windows apply to selected plots only. Please see sales advisor for further details

ovn	oven	ffzs	fridge freezer space
h	hob	cup'd	cupboard
ds	dishwasher space	◀ ▶	measuring points
ws	washing machine space		

Please refer to the sales consultant for specific plot details as the illustrations shown are computer generated impressions of how the property may look so are indicative only. External details or finishes may vary on individual plots and homes may be built in either detached or attached styles depending on the development layout. Exact specifications, window styles and whether a property is left or right handed may differ from plot to plot.

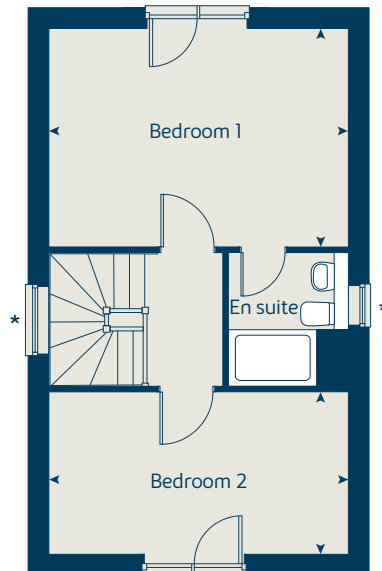
The floorplans shown are not to scale. Measurements are based on the original drawings. Slight variations may occur during construction.

Produced by the Vistry Group Design Studio.

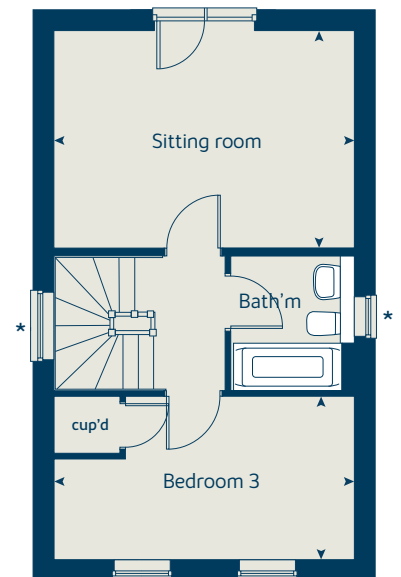
When you have finished with this leaflet please recycle it.

MWAVE GD53938 / 03.20

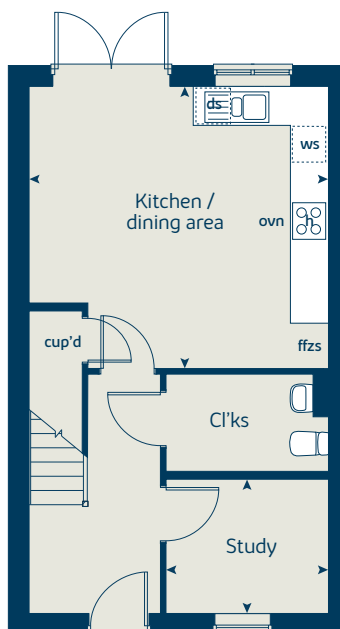
Second floor



First floor



Ground floor





The Magnolia

3 bedroom home

bovishomes.co.uk

**Bovis
Homes** 

The Magnolia

3 bedroom home

Ground floor	metres	feet / inches
Kitchen / dining room	4.74 x 3.37	15' 6" x 11' 0"
Sitting room	3.72 x 3.72	12' 2" x 12' 2"

First floor

Bedroom 1	3.06 x 2.55	10' 0" x 8' 4"
Bedroom 2	3.00 x 2.55	9' 10" x 8' 4"
Bedroom 3	2.81 x 2.10	9' 2" x 6' 10"

The Magnolia | X327 P4 vt MWAVE |

This floorplan has been produced for illustrative purposes only. Room sizes shown are between arrow points as indicated on plan. The dimensions have tolerances of + or -50mm and should not be used other than for general guidance. If specific dimensions are required, enquiries should be made to the sales consultant.

* Windows apply to selected plots only. Please see sales consultant for further details.

ovn	oven	ffzs	fridge freezer space
h	hob	cup'd	cupboard
ds	dishwasher space	◀ ▶	measuring points
ws	washing machine space		

Please refer to the sales consultant for specific plot details as the illustrations shown are computer generated impressions of how the property may look so are indicative only. External details or finishes may vary on individual plots and homes may be built in either detached or attached styles depending on the development layout. Exact specifications, window styles and whether a property is left or right handed may differ from plot to plot.

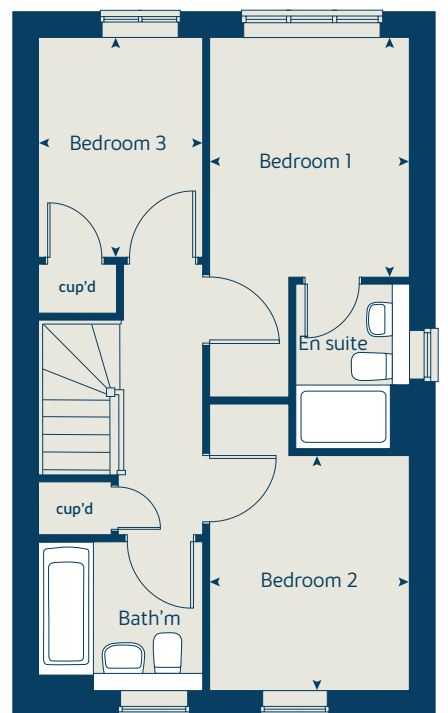
The floorplans shown are not to scale. Measurements are based on the original drawings. Slight variations may occur during construction.

Produced by the Vistry Group Design Studio.

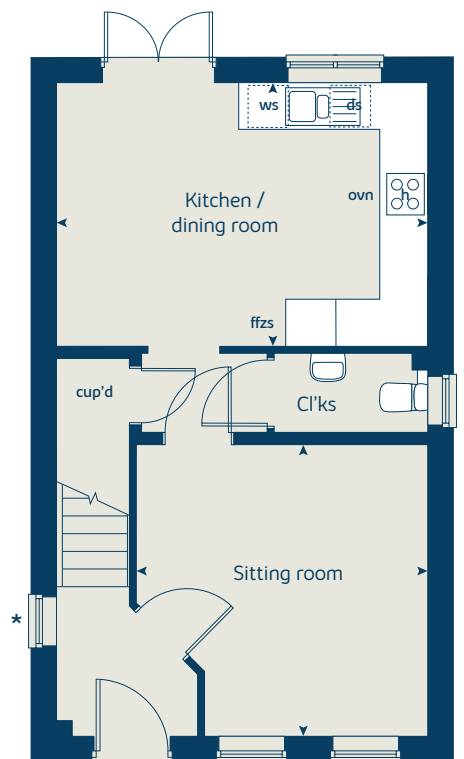
When you have finished with this leaflet please recycle it.

MWAVE GD56448 / 08.20

First floor



Ground floor





The Chestnut II

4 bedroom home

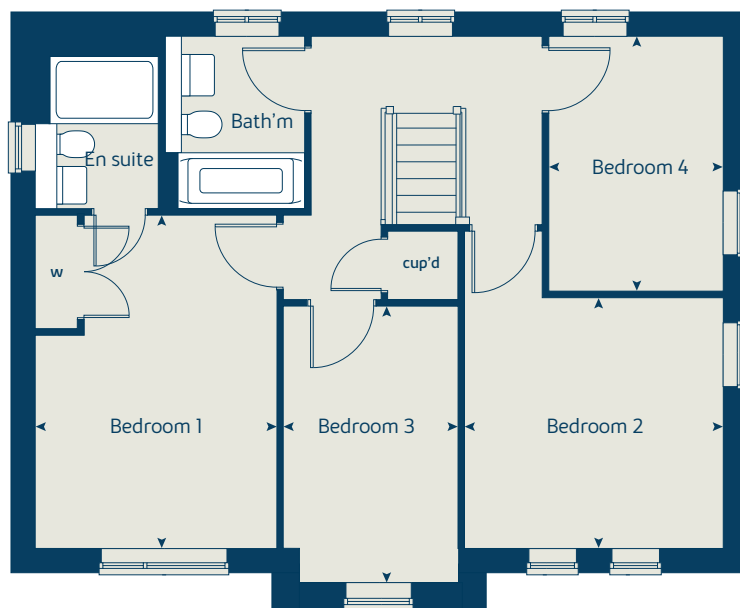
bovishomes.co.uk

**Bovis
Homes** 

The Chestnut II

4 bedroom home

First floor



Ground floor	metres	feet / inches
Kitchen	4.03 x 3.04	13' 2" x 9' 11"
Dining area	4.59 x 2.85	15' 0" x 9' 4"
Sitting room	4.98 x 3.40	16' 4" x 11' 1"
Study	3.40 x 1.81	11' 1" x 5' 11"

First floor

Bedroom 1	3.24 x 2.98	10' 7" x 9' 8"
Bedroom 2	3.48 x 3.36	11' 5" x 11' 0"
Bedroom 3	3.25 x 2.35	10' 7" x 7' 8"
Bedroom 4	3.42 x 2.34	11' 2" x 7' 8"

The Chestnut II | X413V MWAVE |

This floorplan has been produced for illustrative purposes only. Room sizes shown are between arrow points as indicated on plan. The dimensions have tolerances of + or -50mm and should not be used other than for general guidance. If specific dimensions are required, enquiries should be made to the sales consultant.

ovn	oven	ffzr	fridge freezer
h	hob	w	wardrobe
ds	dishwasher space	cup'd	cupboard
ws	washing machine space	< >	measuring points

Please refer to the sales consultant for specific plot details as the illustrations shown are computer generated impressions of how the property may look so are indicative only. External details or finishes may vary on individual plots and homes may be built in either detached or attached styles depending on the development layout. Exact specifications, window styles and whether a property is left or right handed may differ from plot to plot.

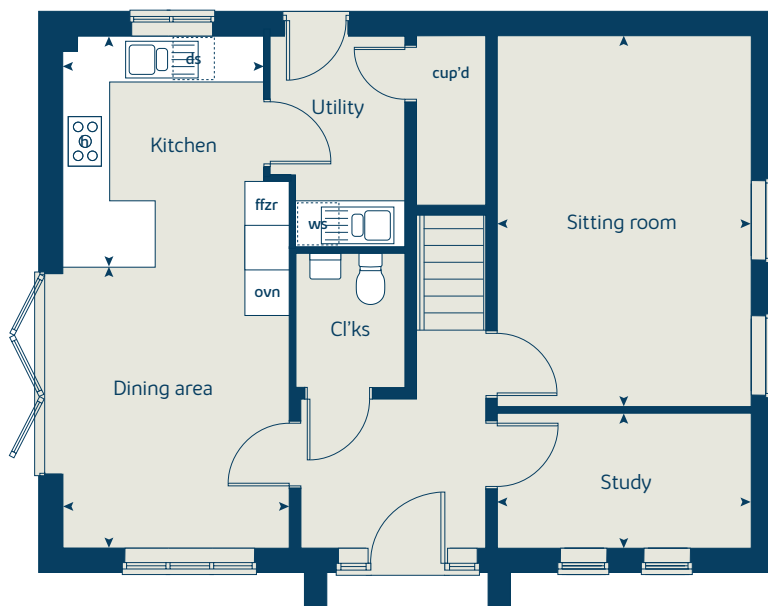
The floorplans shown are not to scale. Measurements are based on the original drawings. Slight variations may occur during construction.

Produced by the Vistry Group Design Studio.

When you have finished with this leaflet please recycle it.

MWAVE GD56448 / 08.20

Ground floor





The Spruce

3 bedroom home

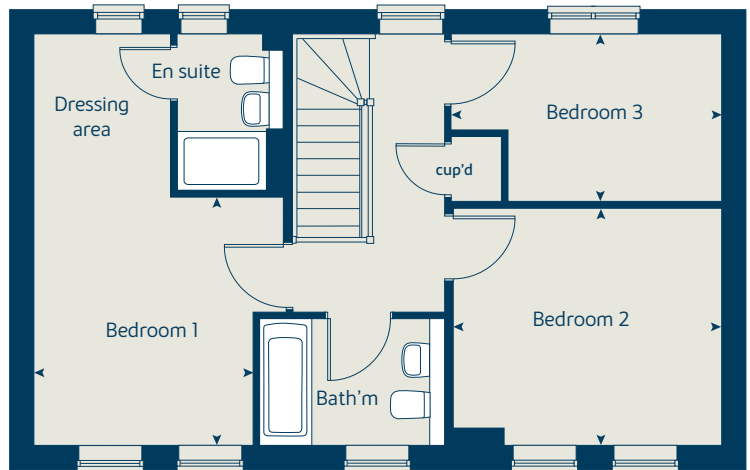
bovishomes.co.uk

**Bovis
Homes** 

The Spruce

3 bedroom home

First floor



Ground floor	metres	feet / inches
Kitchen / dining area	5.52 x 3.19	18' 2" x 10' 6"
Sitting room	5.52 x 3.37	18' 2" x 11' 1"

First floor

Bedroom 1	3.37 x 2.92	11' 1" x 9' 7"
Bedroom 2	3.59 x 3.18	11' 9" x 10' 5"
Bedroom 3	3.59 x 2.24	11' 9" x 7' 4"

The Spruce | X307 (IF) 01 MWAVE |

This floorplan has been produced for illustrative purposes only. Room sizes shown are between arrow points as indicated on plan. The dimensions have tolerances of + or -50mm and should not be used other than for general guidance. If specific dimensions are required, enquiries should be made to the sales consultant.

ovn	oven	ffzs	fridge freezer space
h	hob	cup'd	cupboard
ds	dishwasher space	< >	measuring points
ws	washing machine space		

Please refer to the sales consultant for specific plot details as the illustrations shown are computer generated impressions of how the property may look so are indicative only. External details or finishes may vary on individual plots and homes may be built in either detached or attached styles depending on the development layout. Exact specifications, window styles and whether a property is left or right handed may differ from plot to plot.

The floorplans shown are not to scale. Measurements are based on the original drawings. Slight variations may occur during construction.

Produced by the Vistry Group Design Studio.

When you have finished with this leaflet please recycle it.

MWAVE GD55091 / 02.21

Ground floor

