

The logo for 'Moving You' is located in the top right corner. It consists of the words 'Moving You' in a black, cursive-style font on a bright yellow rectangular background. A small house icon is visible in the bottom right corner of the yellow box.

Amberley Gardens, Yate, BS37 7DP

03334041188 option 3

Asking Price £425,000

guy.rolfe@moving-you.co.uk

Freehold

www.moving-you.co.uk





Light switch

Light fixture

Stack of boxes

Window blinds

MIR & MRS

Radiator

White door

Moving You





Amberley Gardens, Bristol, BS37 7DP

This beautifully maintained modern detached property features two spacious reception rooms, one of which is a modern open-plan kitchen/diner, three charming bedrooms including a master with an en-suite, a family bathroom, a garage, parking space, and a lovely garden, all conveniently located near public transport, schools, and local amenities.

Welcome to this exceptionally lovely detached property that's currently on the market! A picture-perfect example of immaculate condition, this home is a dream come true for families and couples alike.

Come in and be enchanted by the two splendid reception rooms. The first one is a haven of comfort, boasting large windows that invite in an abundance of natural light and provide a refreshing view of the garden. Better yet, it features direct access to the garden, bringing the outdoors in. The second open plan reception room is the heart of the home. An open-plan kitchen/dining room providing a seamless flow of space that's perfect for modern living. The kitchen space is kitted out with modern appliances and high spec finishes, it's a place where cooking becomes a joy, not a chore.

The Utility / W.C completes the accommodation downstairs.

The property includes three delightful bedrooms. The master bedroom comes with an en-suite shower room, creating a private sanctuary for the occupants. The second bedroom is a generous double, while the third bedroom is a delightful room that enjoys ample natural light.

The bathroom is perfect for soaking away the stresses of the day.

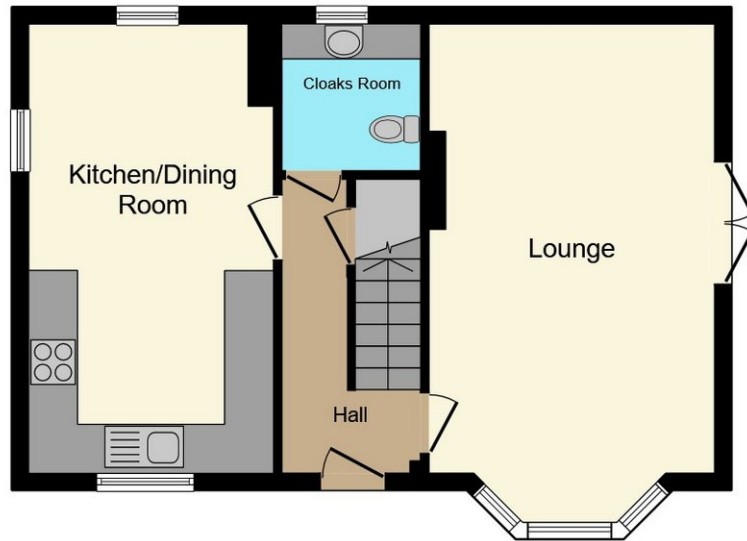
This property's unique features include a garage for your vehicle, a driveway, and a beautiful garden that's perfect for those sunny afternoons. Its location is also ideal, with public transport links, schools, and local amenities all nearby. This could be the dream home you've been waiting for!

Council Tax Band D

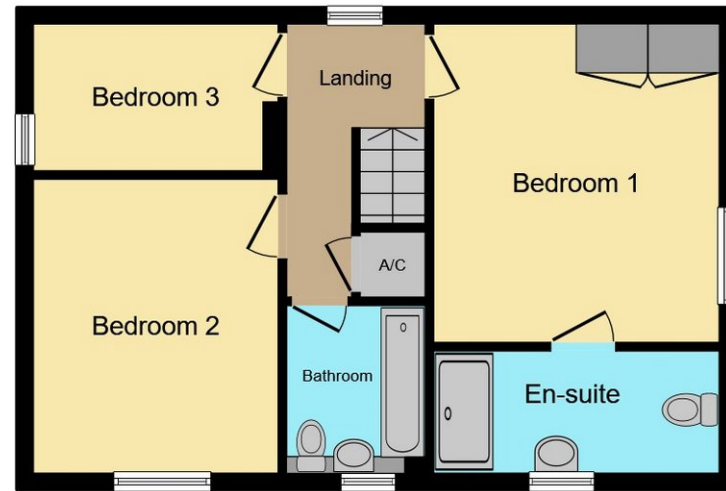








Ground Floor



First Floor

This floor plan is for illustrative purposes only. It is not drawn to scale. Any measurements, floor areas (including any total floor area), openings and orientations are approximate. No details are guaranteed, they cannot be relied upon for any purpose and do not form any part of any agreement. No liability is taken for any error, omission or misstatement. A party must rely upon its own inspection(s). Powered by www.Propertybox.io



Guy Rolfe Moving You

03334041188 option 3

guy.rolfe@moving-you.co.uk

PROPERTY MISDESCRIPTIONS ACT 1991: The Agents has not tested any apparatus, equipment, fixtures and fittings, or services, so cannot verify that they are in working order or fit for the purpose. The buyer is advised to obtain verification from his or her Professional Buyer, References to the Tenure of the property are based on information supplied by the Vendor. The agents have not had sight of the title documents. The buyer is advised to obtain verification from their Solicitor. You are advised to check the availability of any property before travelling any distance to view.

www.moving-you.co.uk