

Moving You



Ashcombe Crescent, Bristol

03334041188 option 3

Asking Price £375,000

[guy.rolfe@moving-you.co.uk](mailto:guy.rolfe@moving-you.co.uk)

Freehold

[www.moving-you.co.uk](http://www.moving-you.co.uk)









## Ashcombe Crescent, Bristol, BS30 5NX

This charming semi-detached home features three bedrooms, three reception rooms, a homely kitchen with a breakfast bar, and includes a garage store with driveway, all ideally located near schools, local amenities, and green spaces.

Welcome to this charming semi-detached family home, a perfect property that's on the market now and eagerly awaiting new owners. With a generous collection of rooms, this place offers an abundance of space for all your needs.

You will find three reception rooms in the property, each with its unique character and purpose. A large living room offers the ideal space for family gatherings and lazy evenings, while the second reception dining/conservatory opens up to a beautiful garden, offering a serene view and easy access for those summer barbecues or tranquil coffee mornings. The third room is a playful area, an absolute haven for little ones, a potential hobby room or home office.

The modern style refitted kitchen is a homely space that features a breakfast bar, perfect for quick meals or casual dining.

The house boasts three cosy bedrooms, two of which are single rooms, perfect for children or guests, while the master bedroom is a delightful double room featuring a convenient en-suite. The property includes one bathroom, complete with a heated towel rail for that extra touch of comfort.

Not to forget, the property comes with a handy downstairs W.C, garage store and driveway, easing off any parking woes.

Location is a significant factor when choosing a home. This property is ideally located near schools and local amenities. For those who love the outdoors, there's an array of green spaces and cycling routes nearby on the Bristol & Bath cycle path – perfect for weekend adventures or daily jogs.

This home is perfect for families and couples alike, offering a blend of convenience, comfort, and character. We invite you to come and see this gem of a property for yourself!

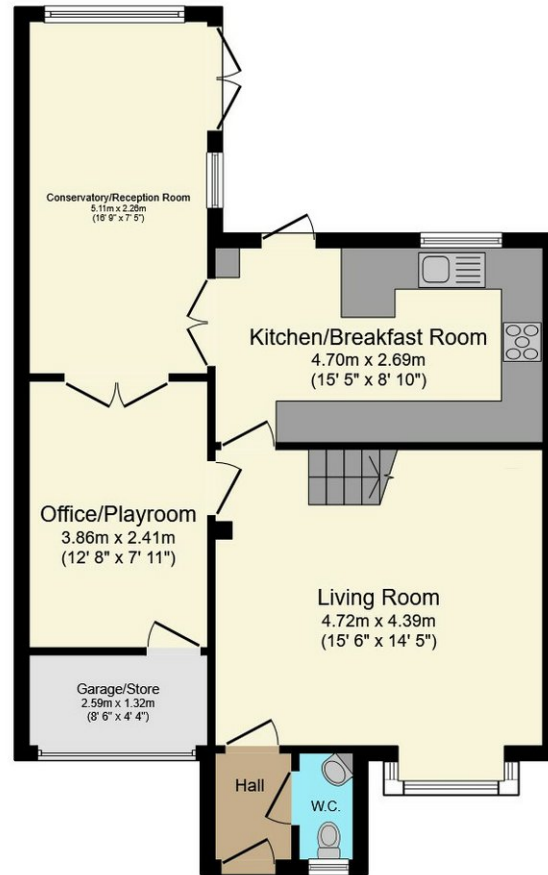
Council Tax Band D



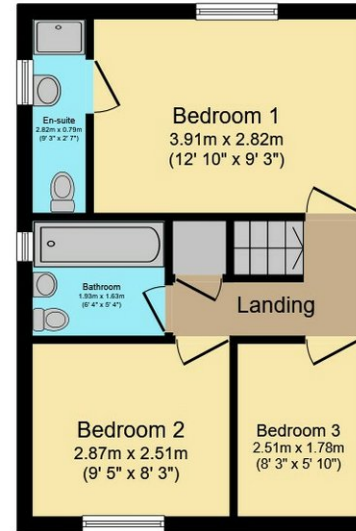








Ground Floor



First Floor

This floor plan is for illustrative purposes only. It is not drawn to scale. Any measurements, floor areas (including any total floor area), openings and orientations are approximate. No details are guaranteed, they cannot be relied upon for any purpose and do not form any part of any agreement. No liability is taken for any error, omission or misstatement. A party must rely upon its own inspection(s). Powered by [www.Propertybox.io](http://www.Propertybox.io)



Guy Rolfe Moving You

03334041188 option 3

[guy.rolfe@moving-you.co.uk](mailto:guy.rolfe@moving-you.co.uk)

PROPERTY MISDESCRIPTIONS ACT 1991: The Agents has not tested any apparatus, equipment, fixtures and fittings, or services, so cannot verify that they are in working order or fit for the purpose. The buyer is advised to obtain verification from his or her Professional Buyer, References to the Tenure of the property are based on information supplied by the Vendor. The agents have not had sight of the title documents. The buyer is advised to obtain verification from their Solicitor. You are advised to check the availability of any property before travelling any distance to view.

[www.moving-you.co.uk](http://www.moving-you.co.uk)