

MANOR

THE GREEN
HETHE | OX27 8EU



SHORT LET. PERFECT FAMILY HOLIDAY HOME IN OXFORDSHIRE. COUNTRY WALKS AND APPROXIMATELY 1 HOUR TRAIN JOURNEY INTO LONDON.

The Threshing Barn is a beautifully renovated barn located in the village of Hethe, offering the perfect mix of style, comfort and country living in the Conservation area north of Oxfordshire.

The kitchen features exposed beams, along with vaulted ceilings, oak flooring and a fabulous wooden staircase leading to the four bedrooms on the first floor. There are two sitting areas; one off of the kitchen and the other with access to the south to west facing garden via French doors. The utility room, cloakroom and fifth double bedroom are on the ground floor; this bedroom makes an ideal annexe for older children or guests.

There is off road parking to the front of the house through electric gates.

Hethe is a picturesque village in the Oxfordshire countryside, offering a tranquil rural lifestyle with easy access to nearby Bicester and Oxford. Known for its charming stone cottages, historic church, and peaceful surroundings, Hethe combines traditional English village appeal with modern connectivity. Its close proximity to major transport links, including the M40 and Bicester North station, makes it an ideal location for commuters seeking a quiet retreat. With its welcoming community and easy reach of local amenities, this village is an attractive option for those looking to enjoy the best of rural living while staying close to urban conveniences.

Also available for long lets, contact agent for further details - hello@manoroxford.com

5



3



3



D



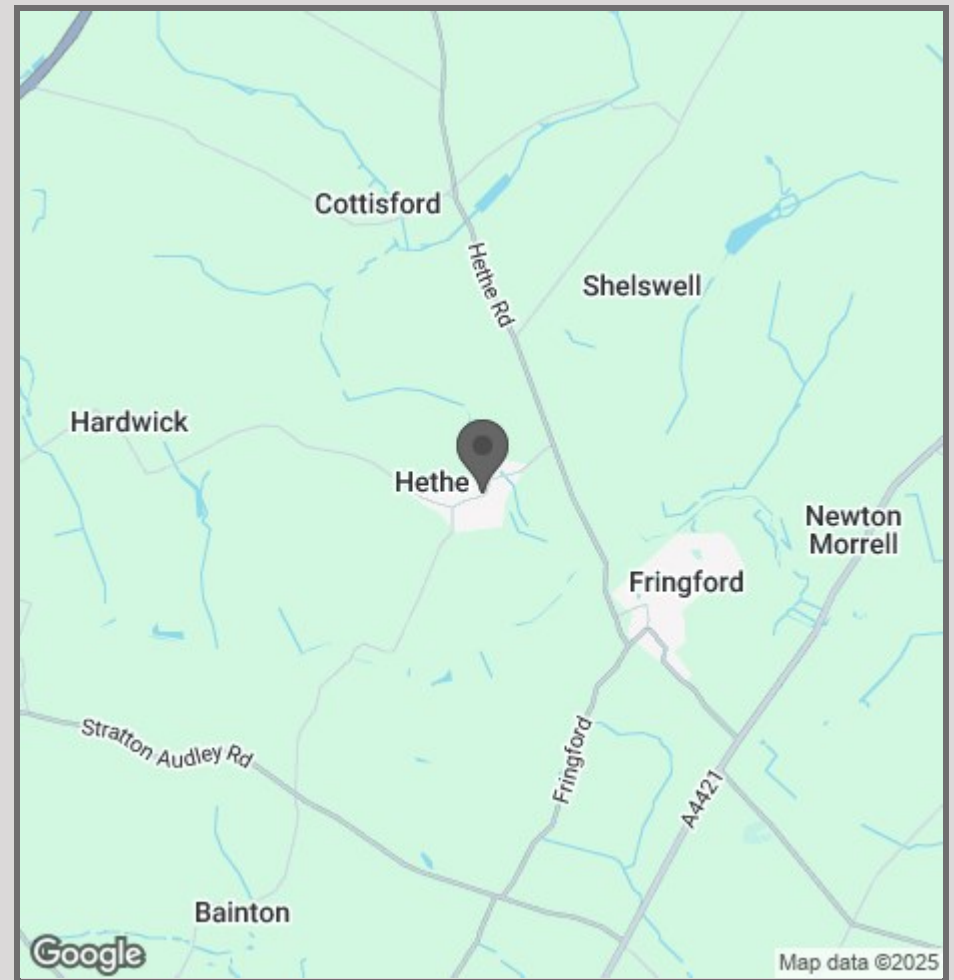








- RENT INCLUSIVE OF ALL BILLS
- Beautifully renovated barn conversion
- 4 bedrooms on first floor
- 1 bedroom (annexe) on the ground ideal for a teen bedroom or guest
- Three bathrooms, roll top bath in main bathroom
- Ideal for London commuters for Bicester North station
- Open plan vaulted living room
- Garden
- Off road parking via electric gates
- Cloakroom and utility room



42 High Street
Woodstock
OX20 1TG

01865 955500

hello@manoroxford.com

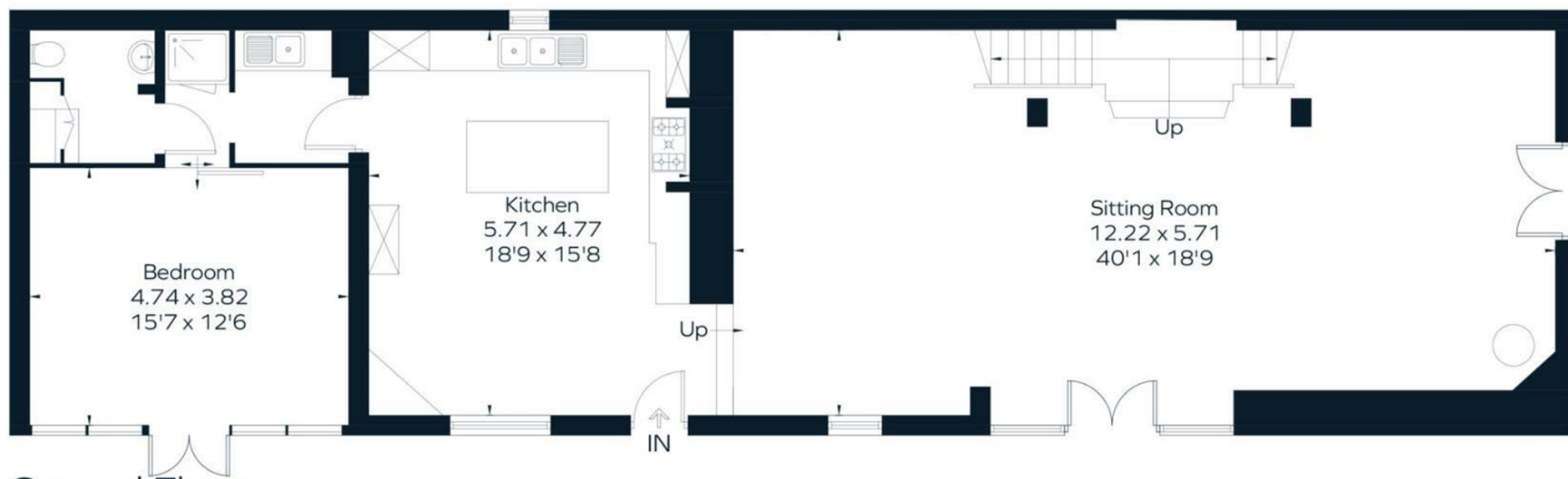
www.manoroxford.com

MANOR



First Floor

 = Reduced head height below 1.5m



Ground Floor

MANOR