

MANOR

35 OXFORD STREET
WOODSTOCK | OX20 1TH



35 Oxford Street is perfectly equipped for family living. The ground floor offers a well-connected kitchen, living and dining space that naturally creates a practical hive for the home. You will also find a utility and laundry room.

Sticking to townhouse tradition, the formal reception is situated on the first floor in true. Further benefits include a basement cellar, accessed via the main hallway, suitable for wine storage.

The bedrooms arrange themselves on the upper floors. On the first floor, you will find a double bedroom with an ensuite and a family bathroom.

The main bedroom lends itself to a dressing room and private bathroom located on the top floor, allowing for a private suite within the home.

There is a garden office and two double-story outbuildings, one of which has been converted into a self-contained one-bedroom annexe and the other which is currently utilised as studio space with a mezzanine bedroom.

The landscaped garden is a private and tranquil space that is perfect for entertaining. There is also external access to the garage/storage space.

Furnished options available

6



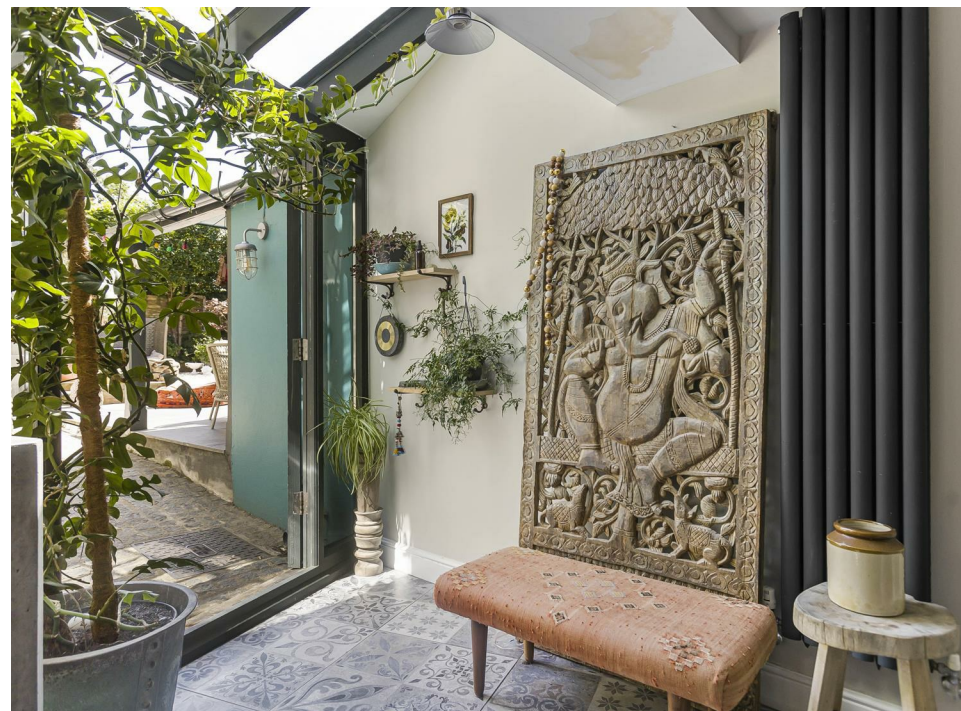
3



4



D







35 Oxford Street is equipped for family living. The ground floor offers a well-connected kitchen, living and dining space ideal for family living along with a further reception room and a useful utility and laundry room. The formal reception is situated on the first floor in true townhouse tradition. Further benefits include a basement cellar, accessed via the main hallway, suitable for wine storage.

The bedrooms are arranged over the upper two floors. On the first floor, you will find a double bedroom with an ensuite and a family bathroom. The master bedroom with a dressing room and an ensuite is arranged on the top floor, offering the ability to create a private suite.

The property further benefits from a garden office, and two double-story outbuildings, one of which has been converted into a self-contained one-bedroom annexe and the other which is currently utilised as a studio space with a mezzanine bedroom.

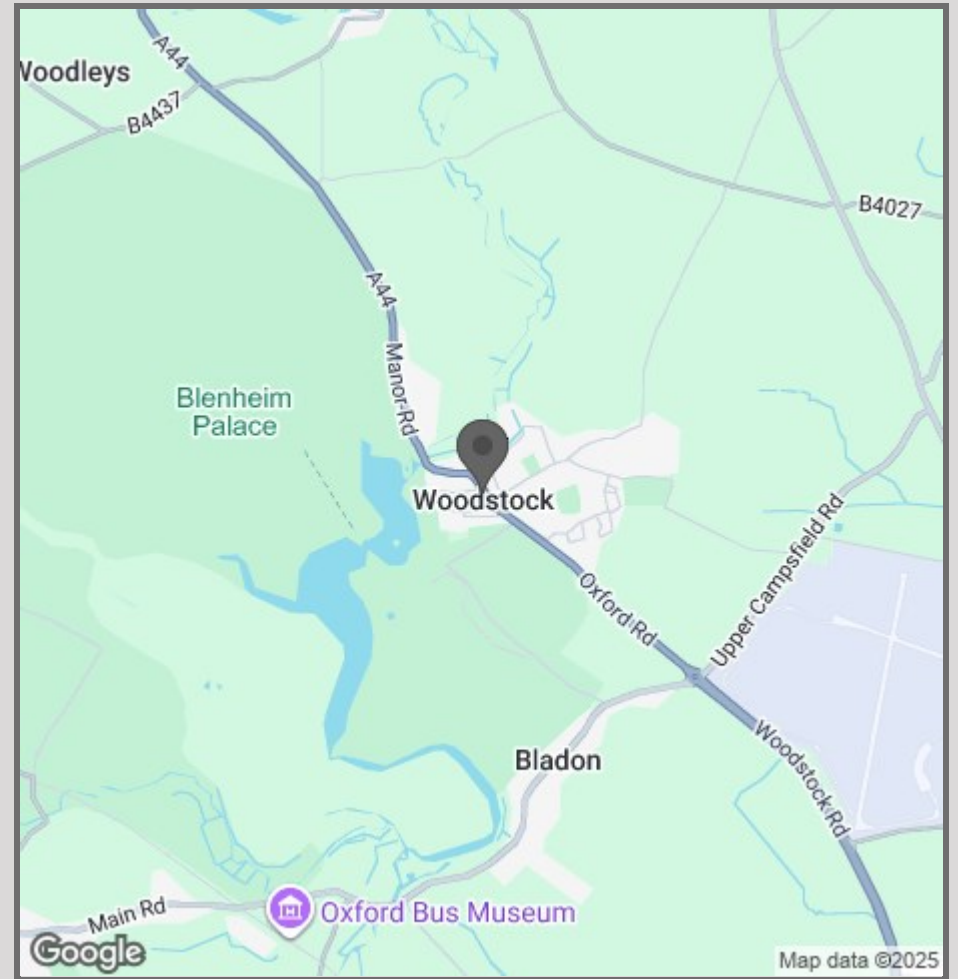
The landscaped garden is a private and tranquil space that is perfect for entertaining, there is also external access to the garage and storage space.

Viewing is highly recommended.





- Highly Favourable Location
- Six Bedroom Home
- Self Contained Outbuildings
- Interior Design Masterpiece
- Versatile Living Available
- Fantastic Transport Links Near
- Amenities Nearby
- Schools Nearby
- Soho Farmhouse Nearby
- Estelle Manor Nearby



42 High Street
Woodstock
OX20 1TG

01865 955500

hello@manoroxford.com

www.manoroxford.com

MANOR



Although Pink Plan Ltd ensures the highest level of accuracy, measurements of doors, windows and rooms are approximate and no responsibility is taken for error, omission or misstatement. These plans are for representation purposes only as defined by RICS code of measuring practise. No guarantee is given on total square footage of the property within this plan. The figure icon is for initial guidance only and should not be relied on as a basis of valuation.

MANOR

M A N O R