

**MANOR**

FLAT 5 FLORIN COURT  
LONDON | EC1M 6ET



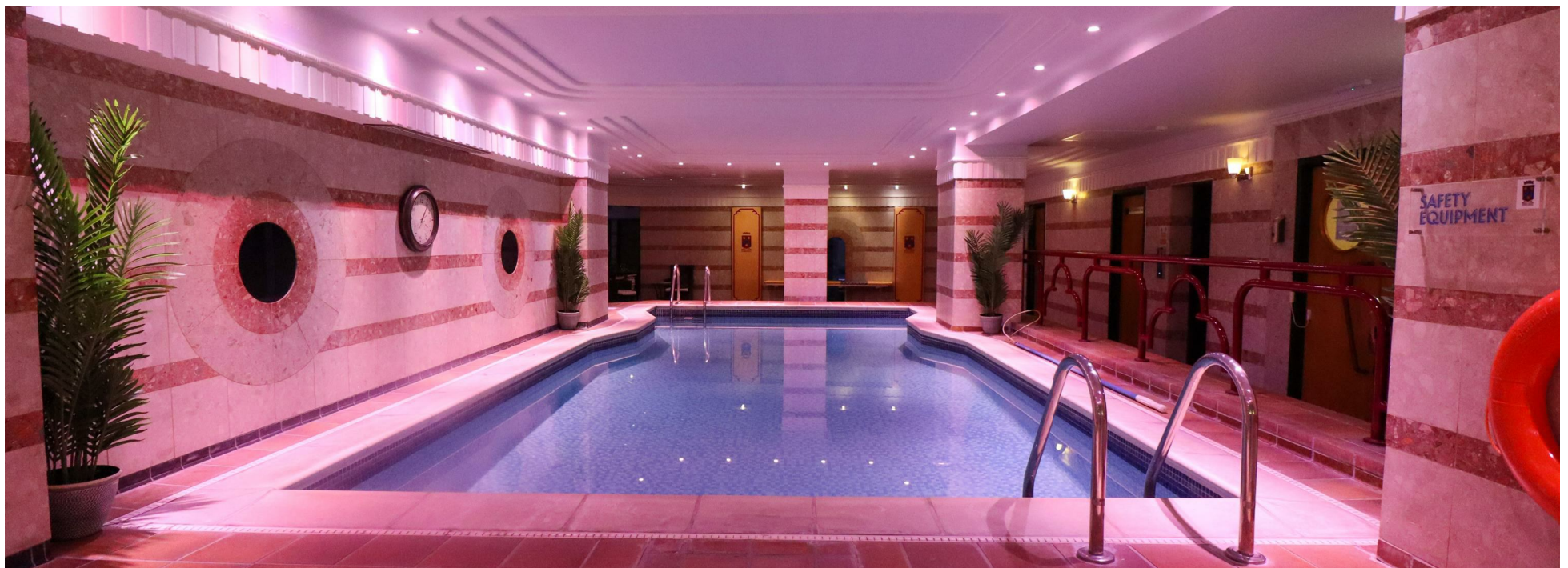




Florin Court is an iconic Art Deco London landmark, situated on Charterhouse Square. Offering practical convenience to the Smithfield and City Area.

The accommodation available is a ground floor studio apartment with access to unrivalled city views via the sizeable rooftop terrace

Benefits include the use of indoor swimming pool, sauna, gym and Pilates studio.









Location:

Charterhouse Square is renowned for its beautiful green space, offering peace and tranquility in the heart of central London. This area combines historic charm with modern elements.

Just south of the square, you can find Smithfield Market. Also, a short distance to the west of Charterhouse Square is the iconic landmark of St. Paul's Cathedral.

The nearest tube stations are Farringdon Station (about a 5-minute walk) & Barbican Station (about 10 minutes' walk) – both served by the Circle, Hammersmith & City, and Metropolitan lines.

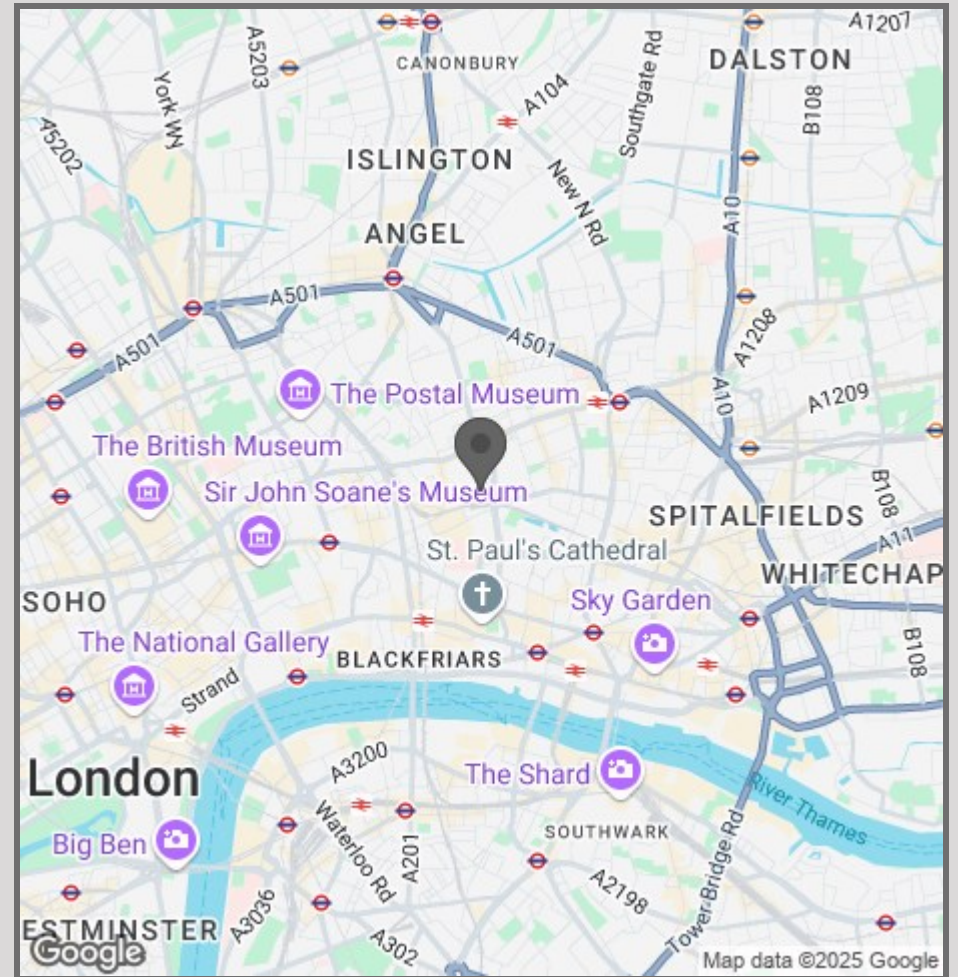
Several bus routes pass through the area, connecting Charterhouse Square to other parts of London.







- Studio Apartment
- Great Transport Links
- Communal Indoor Swimming Pool & Sauna
- Communal Gym & Pilates Studio
- Rooftop Terrace



42 High Street  
Woodstock  
OX20 1TG

01865 955500

[hello@manoroxford.com](mailto:hello@manoroxford.com)

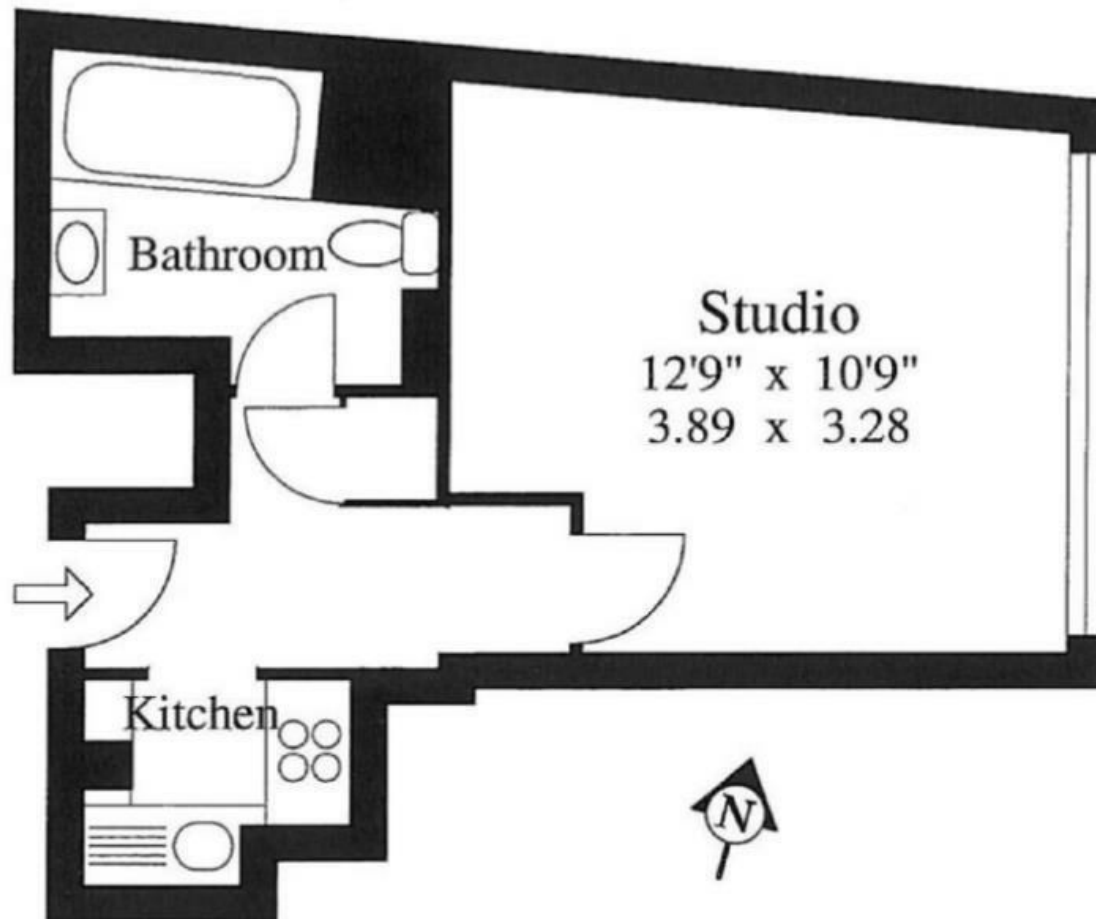
[www.manoroxford.com](http://www.manoroxford.com)

MANOR



Florin Court  
Charterhouse Square  
EC1

Approx Gross Floor Area = 251 Sq. Feet  
= 23.4 Sq. Metres



For illustrative purposes only. Not to scale.







**M A N O R**