



MANOR  
OXFORD







A spacious two bedroom apartment conveniently situated within the highly regarded market town of Woodstock. Boasting easy access to fantastic transport links along with amenities such as shops, pubs, restaurants and the renowned Blenheim Palace.

2



|



|



D







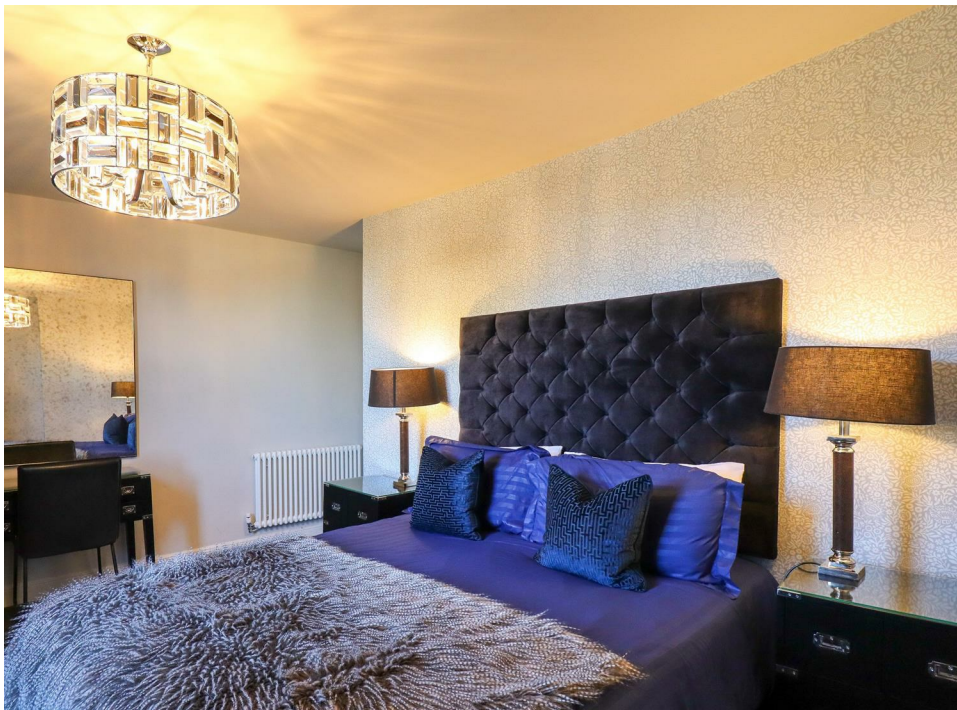




The apartment is split over two floors, the first floor comprises of an eat-in kitchen, with integrated appliances and a spacious sitting room featuring a generous sash window and fireplace. The second-floor hosts the two bedrooms, the spacious front bedroom includes a sash window seat that lets in plenty of natural light and offers a comfortable spot to relax. Additionally, there is a family bathroom which has been beautifully modernised and completely refurbished.

The property is currently generating a high rental yield on a short let basis and therefore appealing as a rental investment. Details can be provided on application.

Woodstock is a historic market town in Oxfordshire, England, six miles north of Oxford. It is known for its picturesque setting in the Cotswolds, its proximity to Blenheim Palace, and its association with the poet and playwright William Shakespeare. The town is well-served by public transport, with regular bus services to Oxford and other nearby towns. There is also a train station in nearby Bladon, which provides services to Oxford and London Paddington.

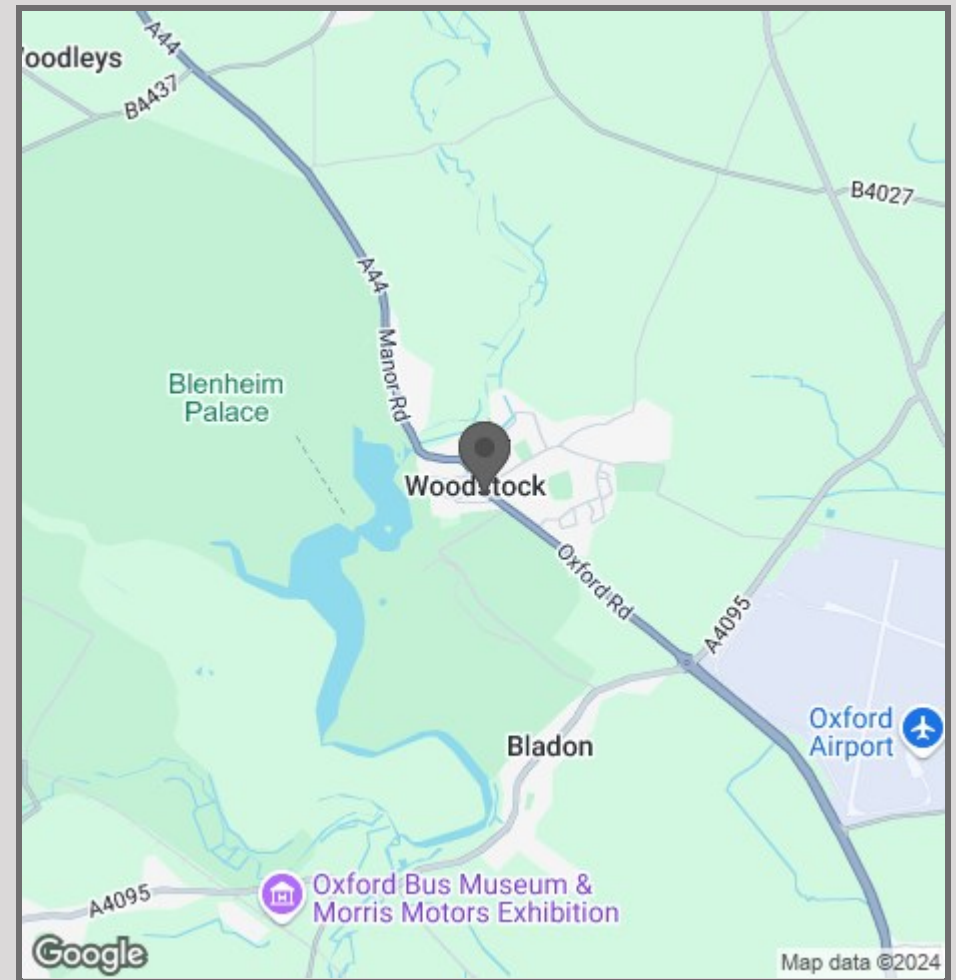








- Highly Favourable Location
- Two Bedroom Apartment
- Recently Renovated
- Blenheim Palace Grounds nearby
- Fantastic Transport Links
- Amenities Nearby
- Town Centre Location



57 Victoria Road  
Oxford  
OX2 7QF

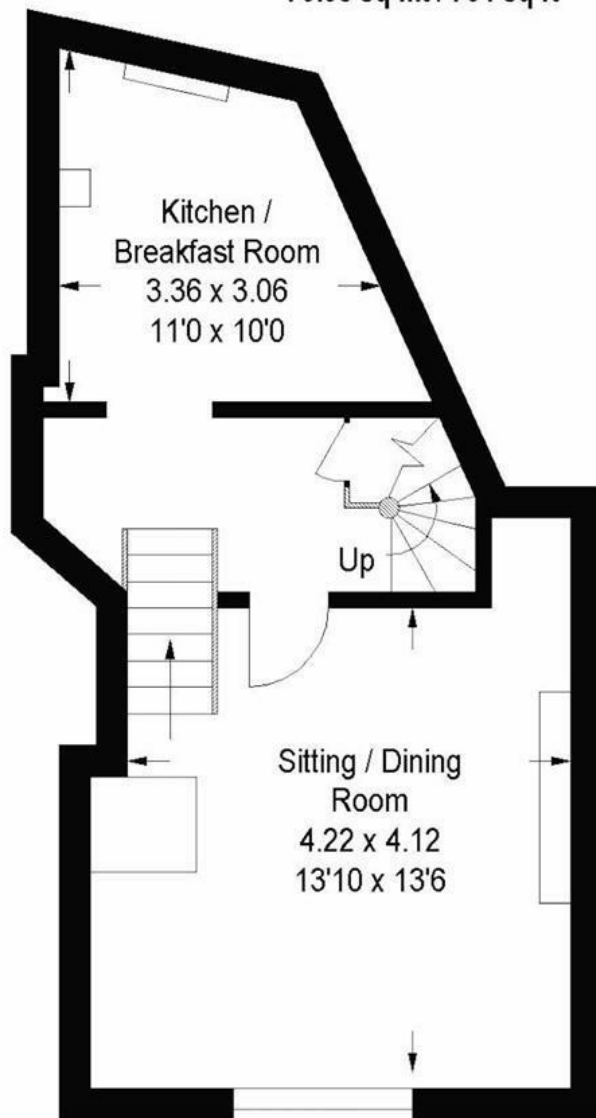
01865 955500

[hello@manoroxford.com](mailto:hello@manoroxford.com)

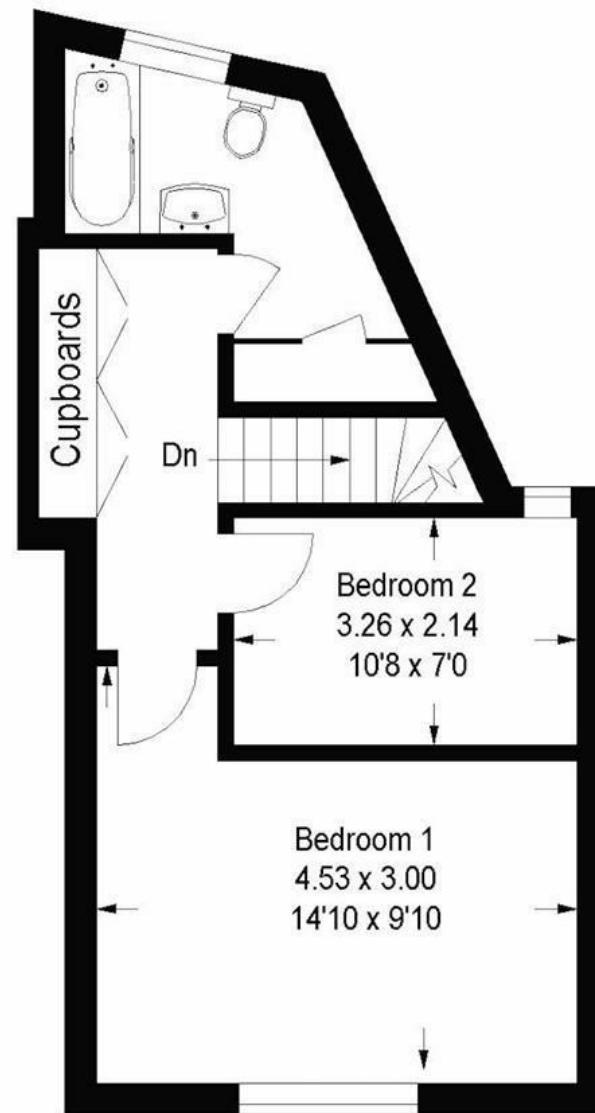
[www.manoroxford.com](http://www.manoroxford.com)



Approximate Gross Internal Area :-  
70.08 sq mt / 754 sq ft



First Floor



Second Floor

Ref B9736

This plan is for layout guidance only. Not drawn to scale unless stated. Measured & drawn to the nearest 10cm / 3". Whilst every care is taken in the preparation of this plan, please check all dimensions shapes & compass bearings before making any decisions reliant upon them. All room dimensions taken through cupboard/wardrobes to wall surfaces where possible or to where indicated by arrow heads.







MANOR  
OXFORD