



MANOR
OXFORD



A two-bedroom cottage located in Stow-On-The-Wold, known as one of the most favourable Cotswold locations. Benefiting from direct access into a thriving market town where you can benefit from boutique shops, cafès and restaurants.

2



2



2



D







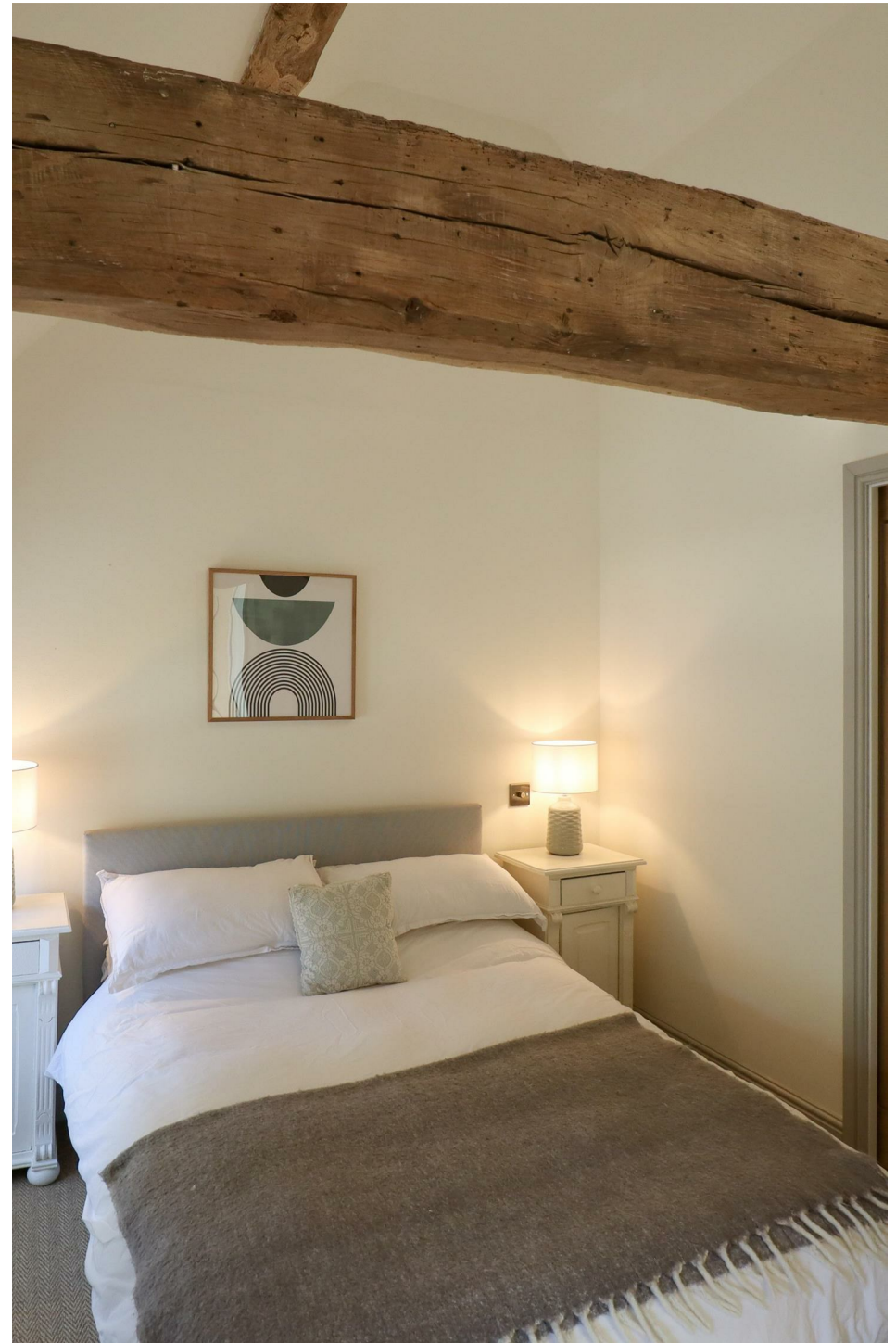
Immaculately presented throughout. The ground floor living accommodation is light and spacious. There is an open aspect kitchen and dining space with patio doors onto rear garden. The living reception offers characteristic features along with a cosy wood burner.

Two stunning suite bedrooms service the first floor both with exposed beams and en suite shower.

Outside there is a hard landscaped courtyard garden. Perfect space for entertaining with double doors back into the open plan kitchen.

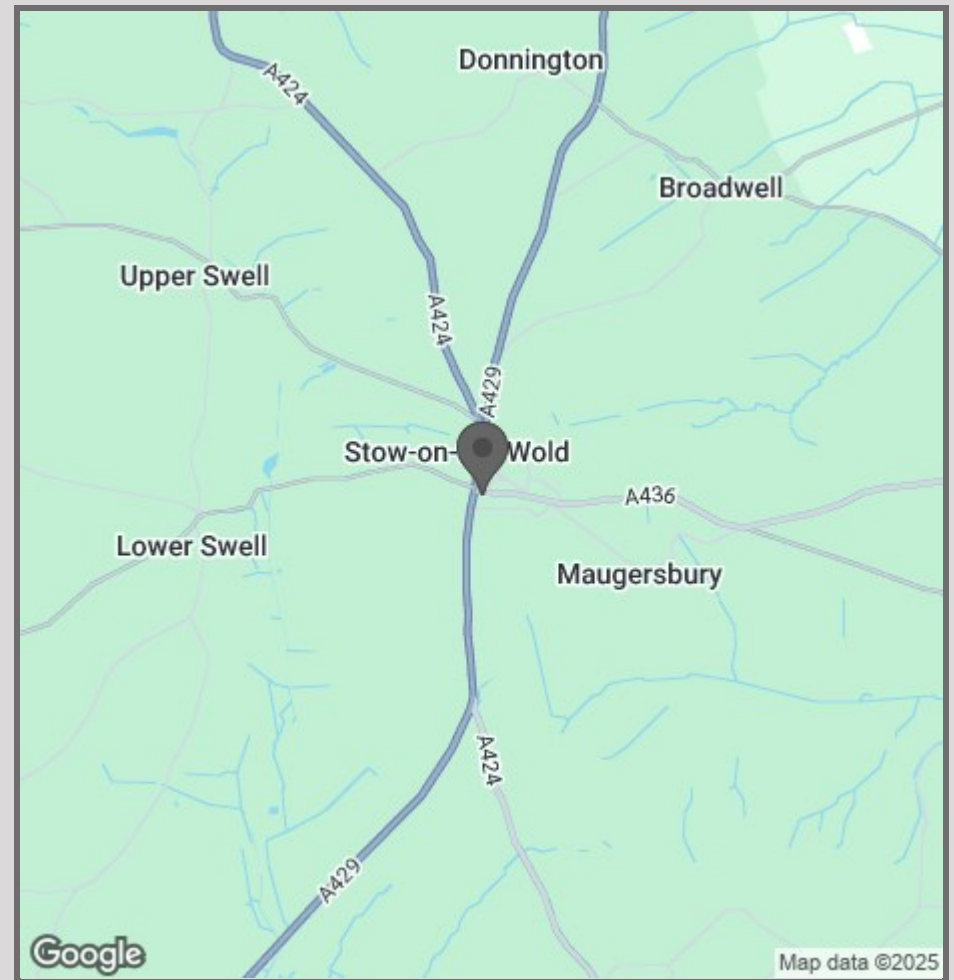
Dotty's Cottage welcomes a wide range of buying criteria. If you're looking for your first home, a downsize or an investment, Dotty's Cottage is a fantastic option for many motivations.

Stow-on-the-Wold is a charming market town that offers a primary school, specialist shops, banks, a library, a doctor's surgery and a supermarket. The town is situated within the Cotswold Area of Outstanding Natural Beauty and is conveniently located near the A40/M40 to London and the A44 Oxford to Worcester. The area is well served by excellent hotels and restaurants including Daylesford Farm Shop 3.5 miles away. Mainline railway stations are at Moreton-in-Marsh and Kingham which serve London Paddington, Oxford, Worcester and Hereford.





- Highly Favourable Cotswolds Location
- Immaculately Presented Throughout
- Two Ensuite Bedrooms
- Private Courtyard Garden
- Characteristic Features
- Excellent Transport Links Nearby
- Amenities Nearby



57 Victoria Road
Oxford
OX2 7QF

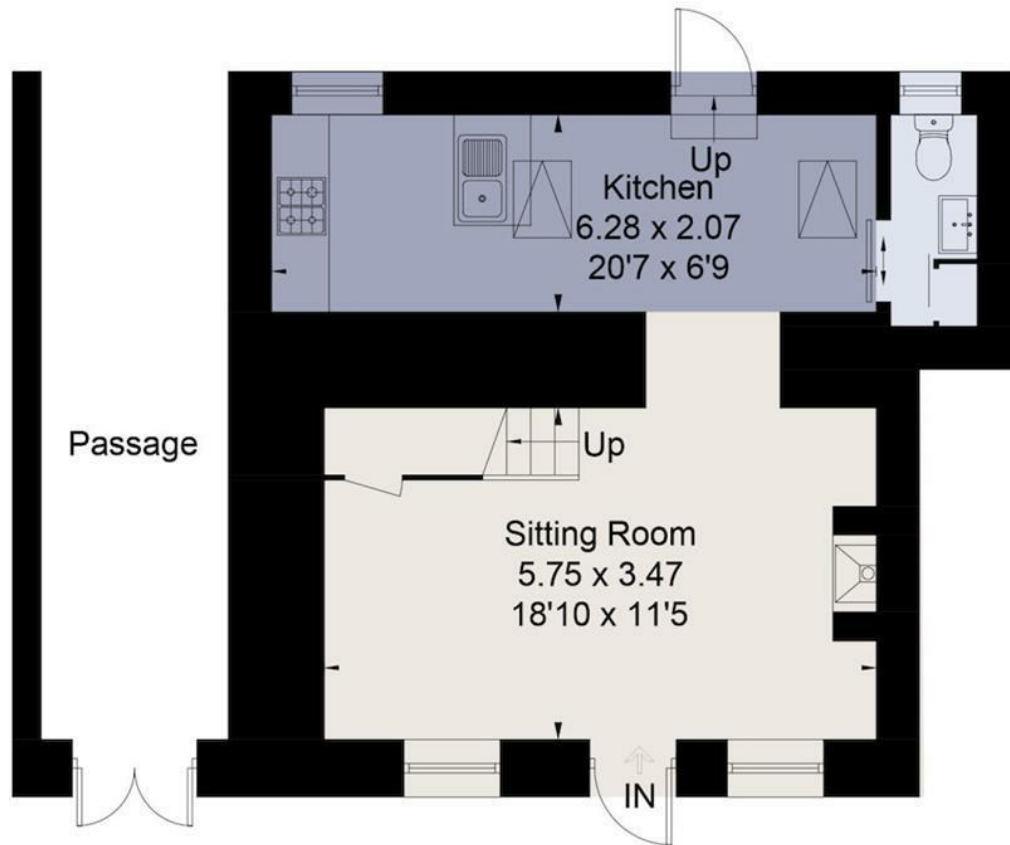
01865 955500

hello@manoroxford.com

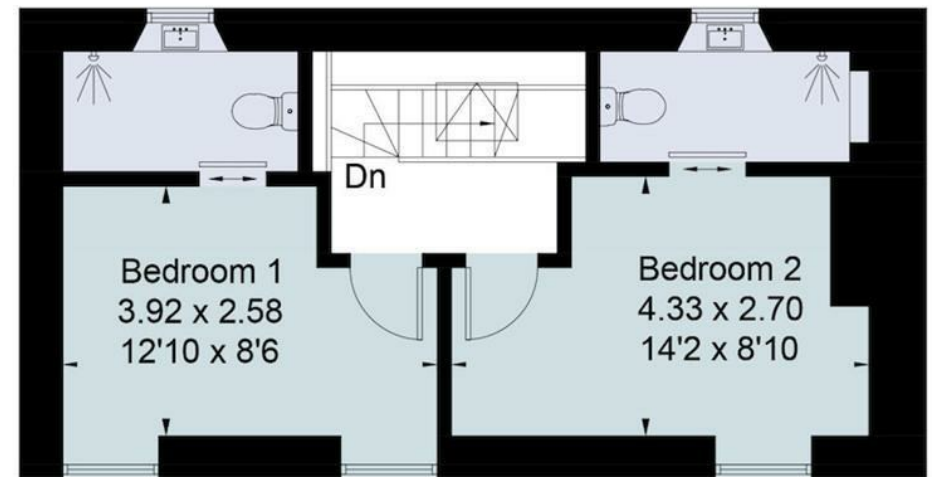
www.manoroxford.com



Approximate Area = 76.2 sq m / 820 sq ft
For identification only. Not to scale.
© Fourwalls



Ground Floor



First Floor



MANOR
OXFORD