



MANOR
OXFORD



A former Blanket Mill dating back to 1890, this apartment is a delightful blend of history and modern high specification convenience within a gated community.

2  1  2  E 



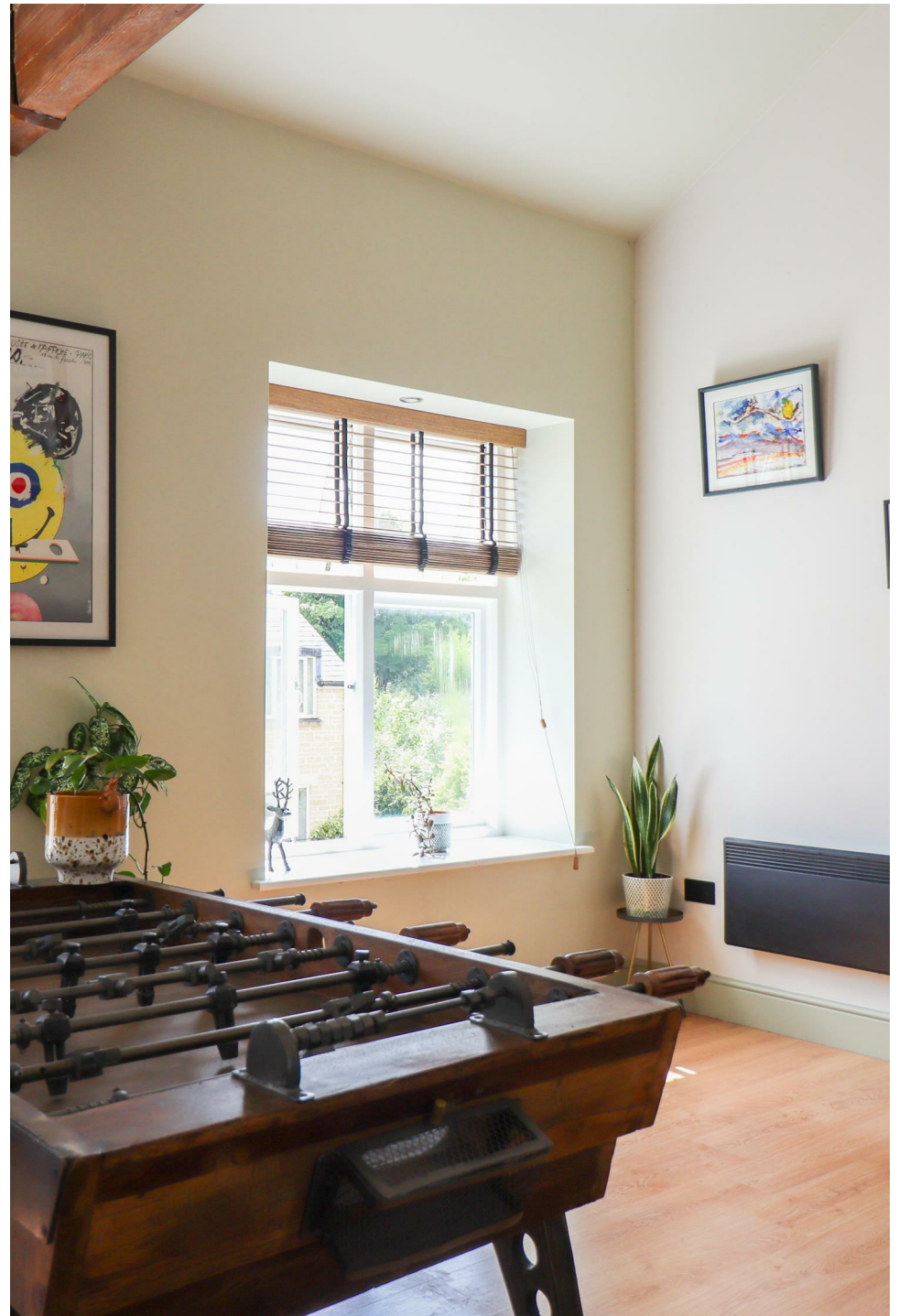
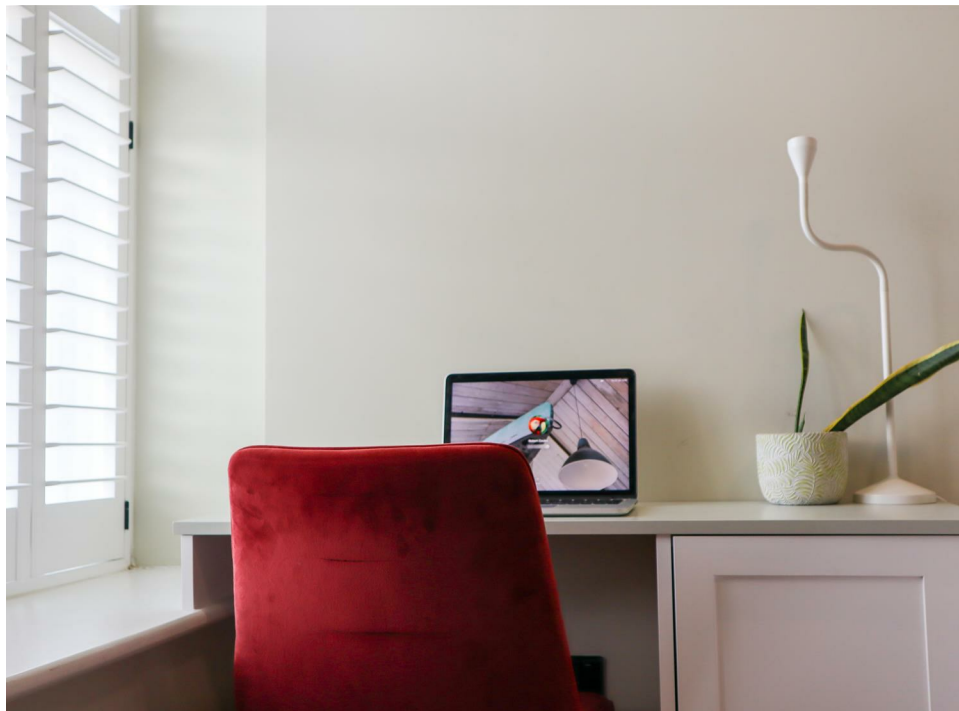


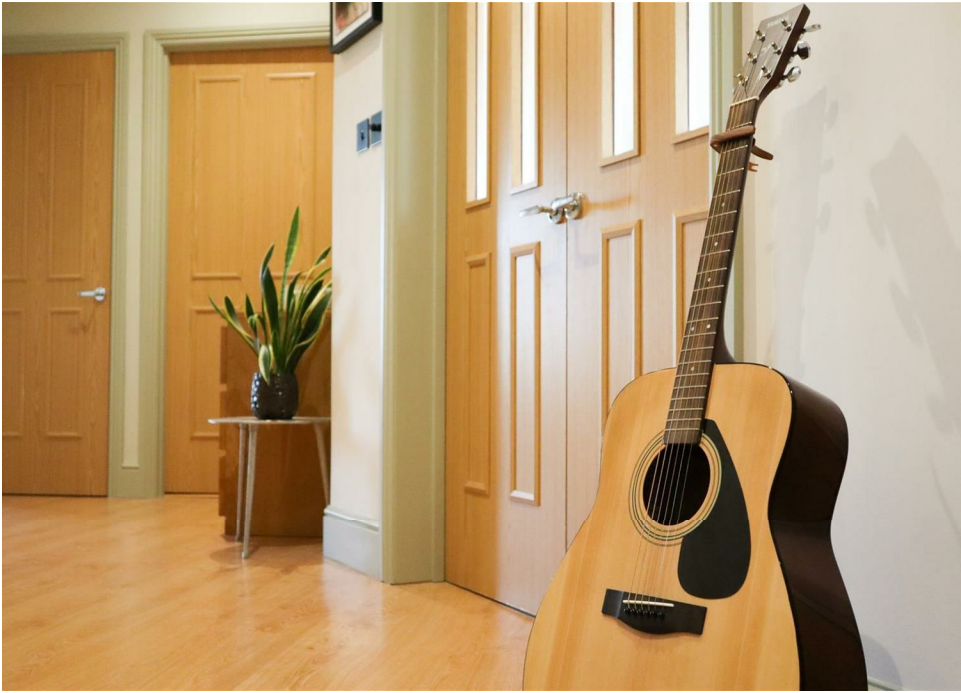
A free-flowing layout offering a spacious hallway design. There is a statement reception room with exposed beams and a vaulted ceiling. Creating a bright and spacious area to relax. Also included is a fitted kitchen with breakfast bar.

The principal bedroom boasts ensuite facilities, there is also a bespoke crafted home office area and built-in wardrobes. There is another double bedroom that also includes built-in wardrobes, boasting views onto the well-maintained communal gardens.

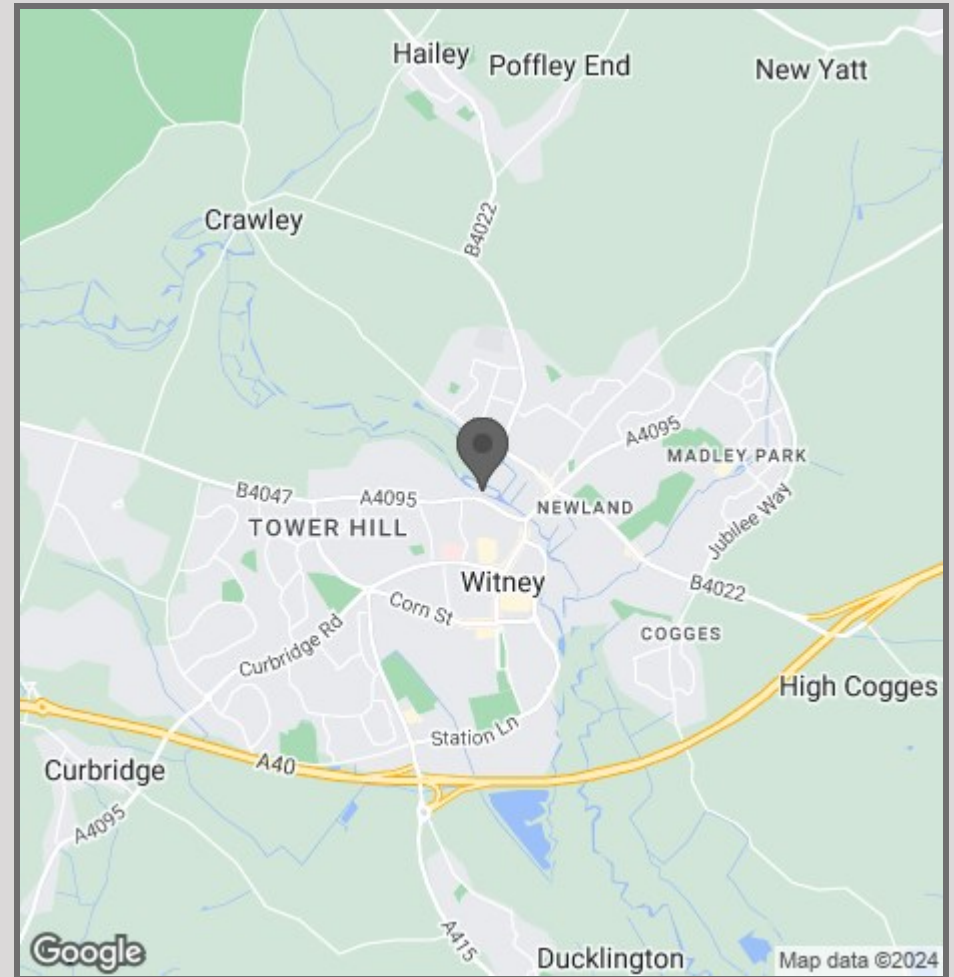
Situated within a prime location of Witney, offering easy access to the open water meadows and the thriving market town.

Two allocated parking spaces available.





- Top floor apartment
- Two Bedrooms
- Ensuite Bathroom
- Two Parking Spaces
- Communal Gardens
- Convenient Witney Location
- Remotely Operated Electric Gates



57 Victoria Road
Oxford
OX2 7QF

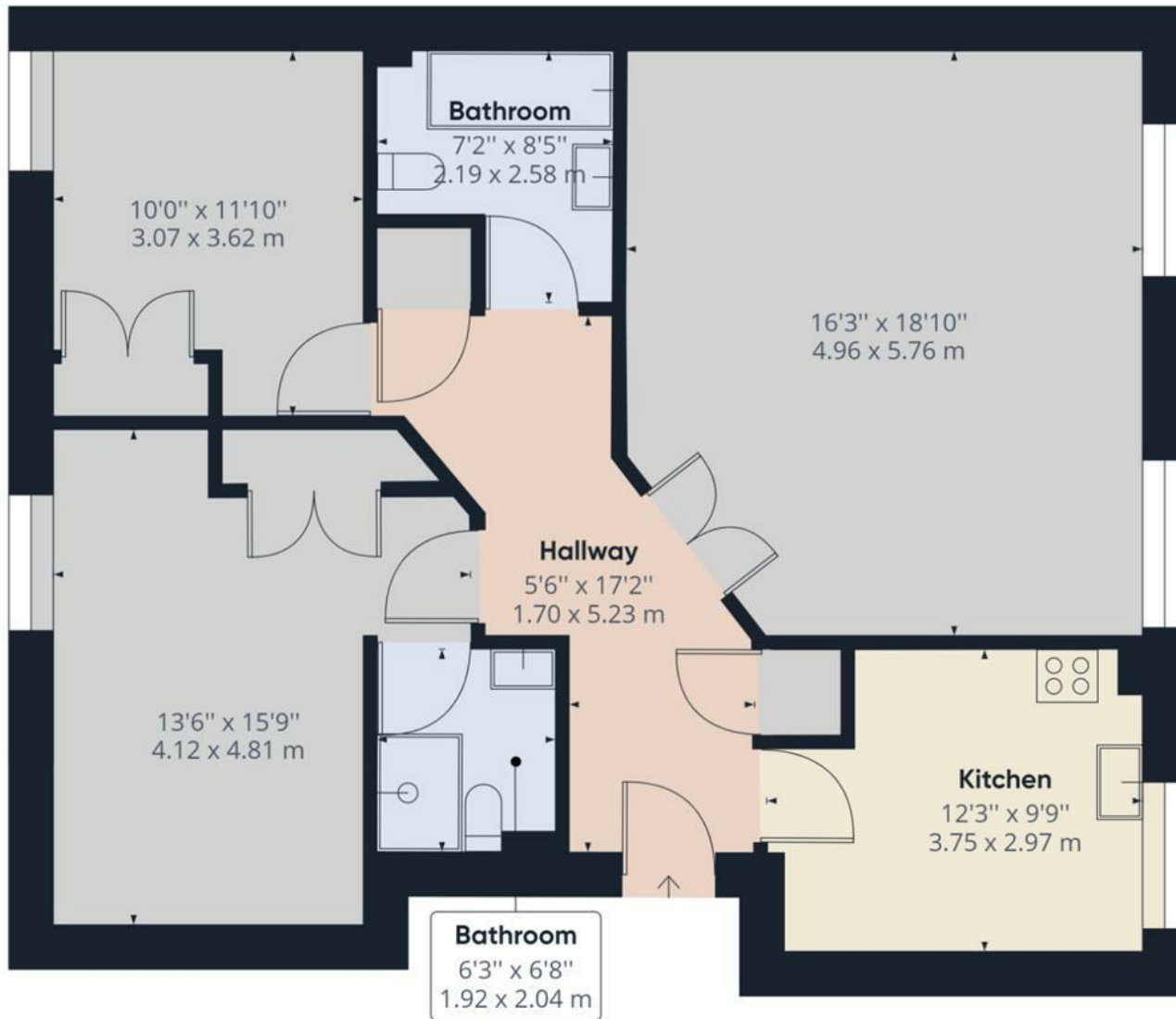
01865 955500

hello@manoroxford.com

www.manoroxford.com



MANOR
OXFORD



Approximate total area⁽¹⁾
 934.61 ft²
 86.83 m²

(1) Excluding balconies and terraces

While every attempt has been made to ensure accuracy, all measurements are approximate, not to scale. This floor plan is for illustrative purposes only.

GIRAFFE360



MANOR
OXFORD