



MANOR  
OXFORD





This property has recently undergone renovation maximising it to its full potential with two double bedrooms and two bathrooms. Everything is brand new and finished to the highest standard. It is close to the City Centre and is a 5 minute walk to the bus stop.

- 2 
- 1 
- 2 
- C 





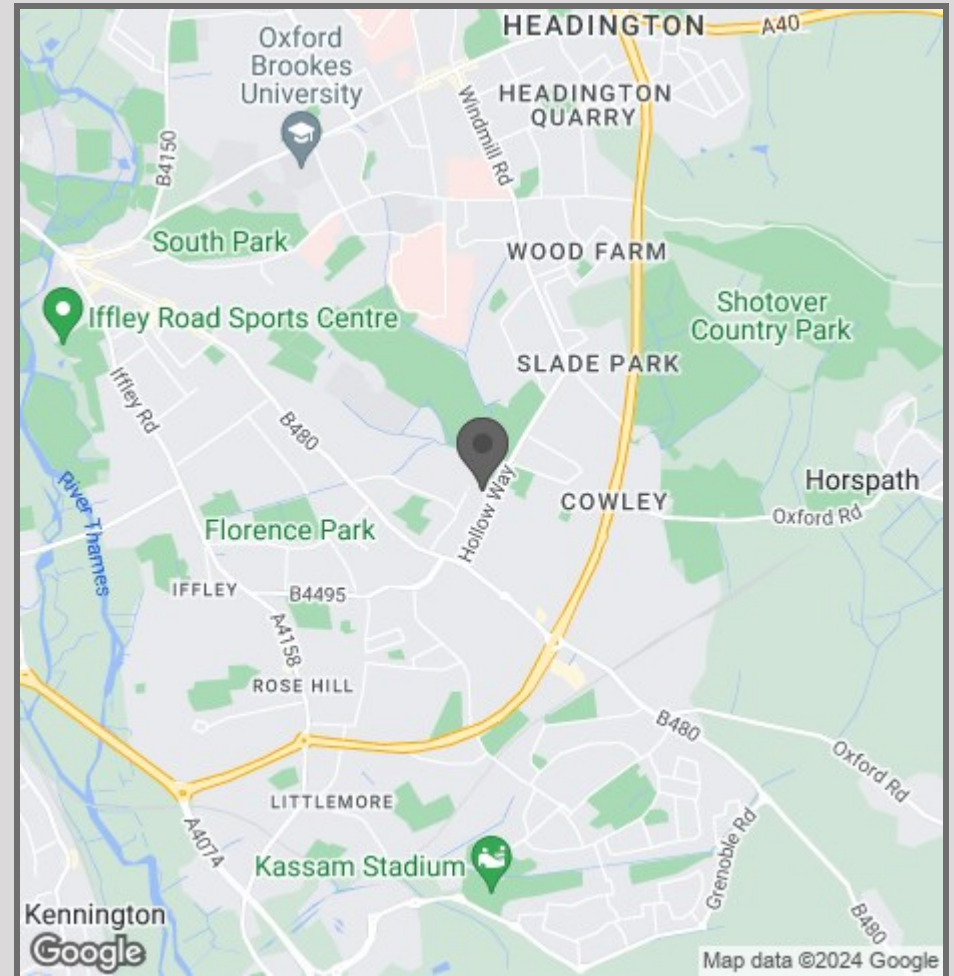








- Fantastic Location
- Amenities Nearby
- Transport Links Nearby
- High Sepcification Finish
- Two Bedroom
- Open Aspect



57 Victoria Road  
Oxford  
OX2 7QF

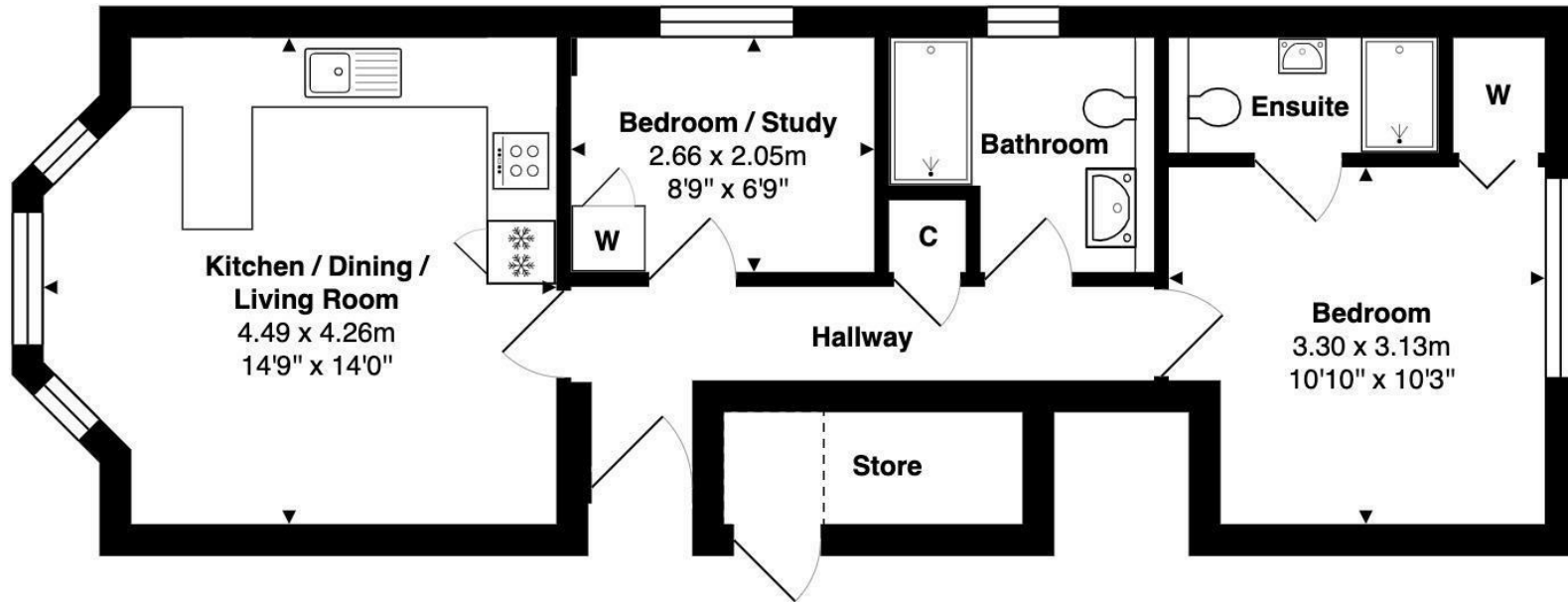
01865 955500

[hello@manoroxford.com](mailto:hello@manoroxford.com)

[www.manoroxford.com](http://www.manoroxford.com)



MANOR  
OXFORD



Approx. Gross Internal Area: 51.7 m<sup>2</sup> ... 557 ft<sup>2</sup>

Whilst every attempt has been made to ensure the accuracy of the floor plan contained here, measurements of doors, windows, rooms, and any other items are approximate. No responsibility is taken for any error, omission, or mis-statement.

This plan is for illustrative purposes only and should be used as such.

Drawn by E8 Property Services. [www.e8ps.co.uk](http://www.e8ps.co.uk)





MANOR  
OXFORD