



MANOR  
OXFORD









This delightful home offers two self-contained living spaces within one building. These spaces can be easily combined to create a larger living area, making it an ideal choice for those in need of extra space or for growing families.













As you enter the main house, you will be greeted with a comfortable sitting room, a fully equipped kitchen and a dining room leading onto a garden room with doors that open out to the garden. Additionally, there is a shower room located on the ground floor. Upstairs, you will find three spacious double bedrooms and a fully equipped family bathroom and a separate WC.

The annex can be accessed through two entryways: one from the front porch and the other from the kitchen. Once inside, you will find a large sitting room and an open-plan kitchen at the rear of the annex. A shower room is also located on the ground floor. Upstairs, the first floor features two double bedrooms and a separate WC.

Outside, the property boasts a spacious private garden, ideal for both outdoor entertainment and relaxation. It also offers off-street parking.





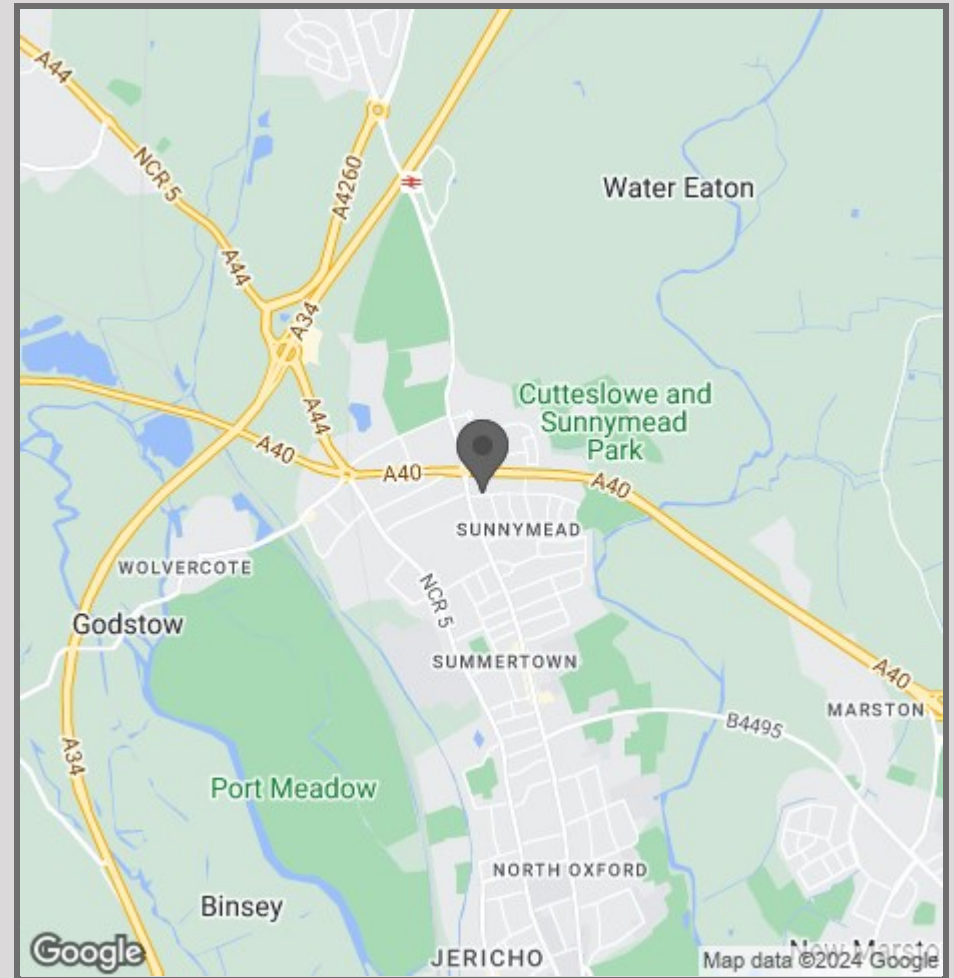




- Two Self-Contained Living Spaces Under One Roof
- Five Bedrooms
- Two Family Bathrooms
- Off-Street Parking
- Large Private Garden
- Convenient Summertown Location
- Schools Nearby

The location on Carlton Road is ideal, located with Summertown's bustling High Street just a short walk away with its boutique shops, charming cafes, and restaurants that cater to every taste. The nearby bus stop on Banbury Road provides easy access to Oxford Central and the mainline train station, offering connections to London Paddington and beyond.

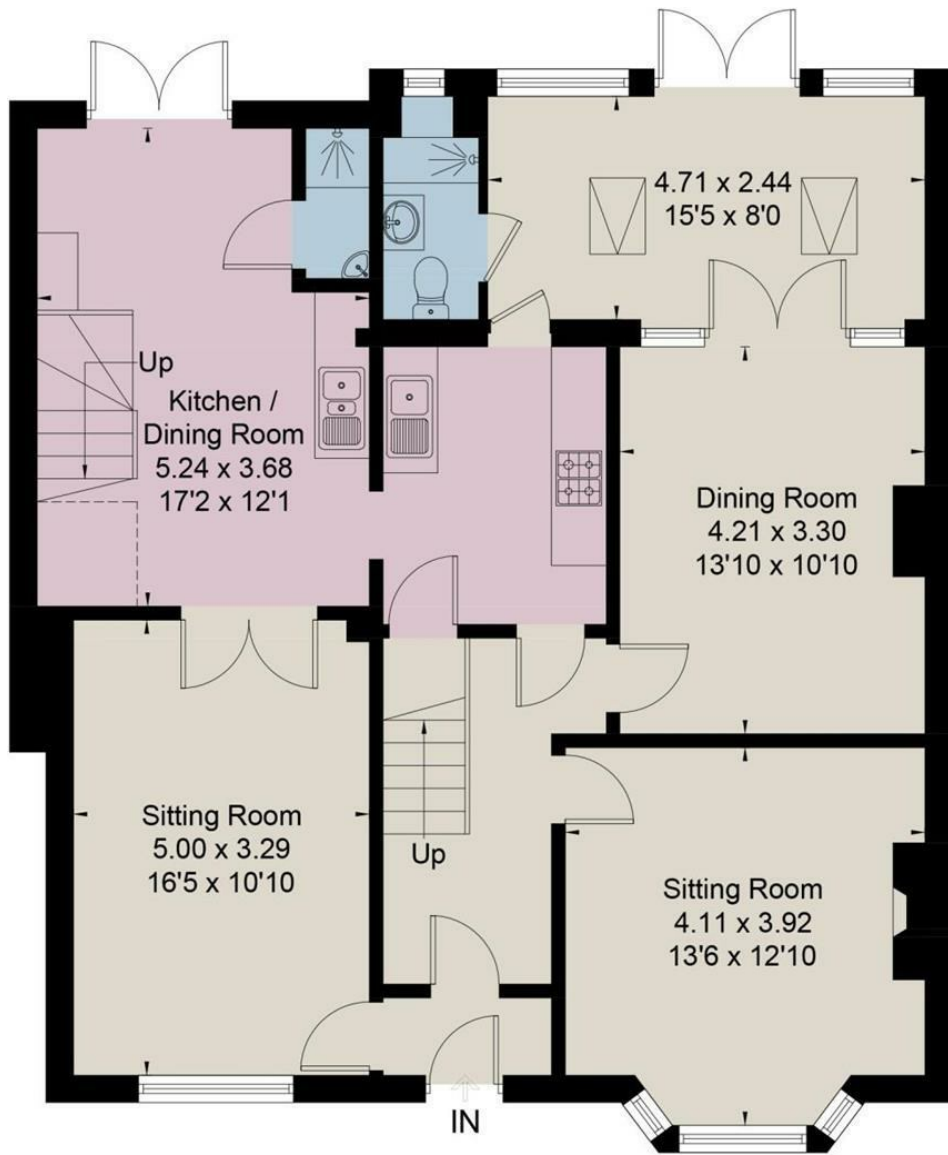
Nearby schools include Summer Fields School, Cutteslowe Primary School, Cherwell School, and The Dragon School.



57 Victoria Road  
Oxford  
OX2 7QF

01865 955500  
hello@manoroxford.com  
www.manoroxford.com

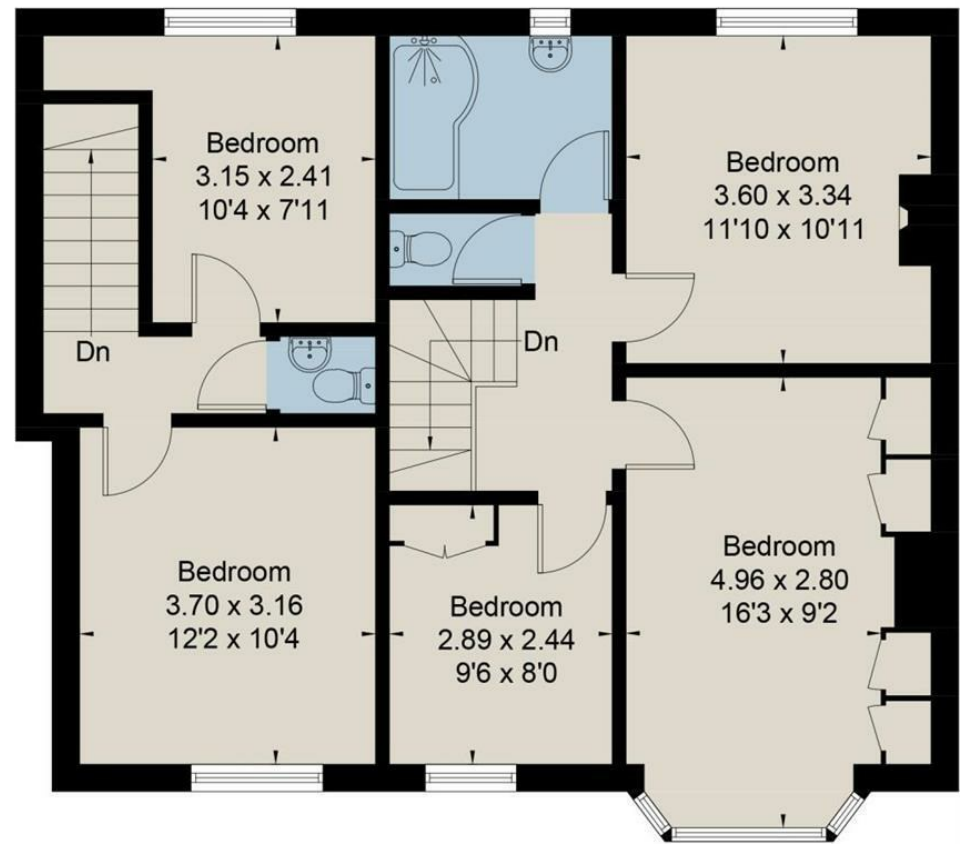




Ground Floor

= Reduced head height below 1.5m

Approximate Area = 180.8 sq m / 1946 sq ft  
Including Limited Use Area (1.3 sq m / 14 sq ft)



First Floor







MANOR  
OXFORD