



MANOR  
OXFORD





Located in the bustling town of Chipping Norton, this five-bedroom detached home is situated within a modern development and offers ample living space for a comfortable and spacious lifestyle.







The interior of the property boasts a great specification throughout, including modern fixtures and fittings & high-quality appliances, offering a high standard of living.

The bedrooms are spacious and offer plenty of natural light, creating a warm and inviting atmosphere.

The property also features a large private garden, perfect for outdoor entertaining and relaxation.

Enjoy the best of both worlds with this ideal family home, situated in a thriving town and offering a peaceful retreat.

Chipping Norton is an attractive Market Town, serving a wide rural area of the Oxfordshire Cotswolds. It offers an extensive range of National and Independent Retailers, a Golf Course, Theatre, and is conveniently situated, being within easy traveling distance of Banbury (12.9 miles with M40 link), Oxford (19.7 miles), Witney (15.5 miles), and Stratford-upon-Avon (22 miles). Mainline train services to London (Paddington) are available from Charlbury (6.6 miles) and Kingham (5.3 miles).

The town is also within easy reach of Soho farmhouse and Daylesford.

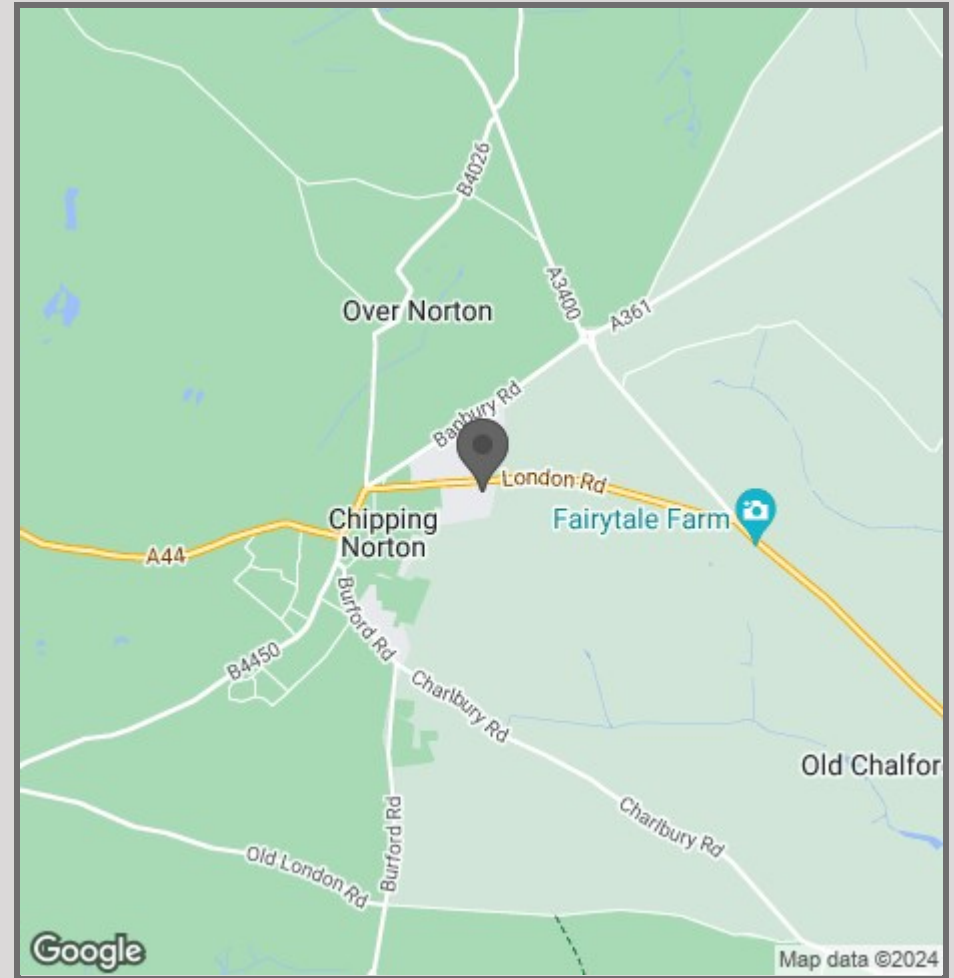








- Five Bedrooms
- Three Bathrooms
- Large Garden
- Off-Street Parking
- Conveniently Located
- Soho Farmhouse Nearby
- Daylesford Nearby
- Thriving Market Town



57 Victoria Road  
Oxford  
OX2 7QF

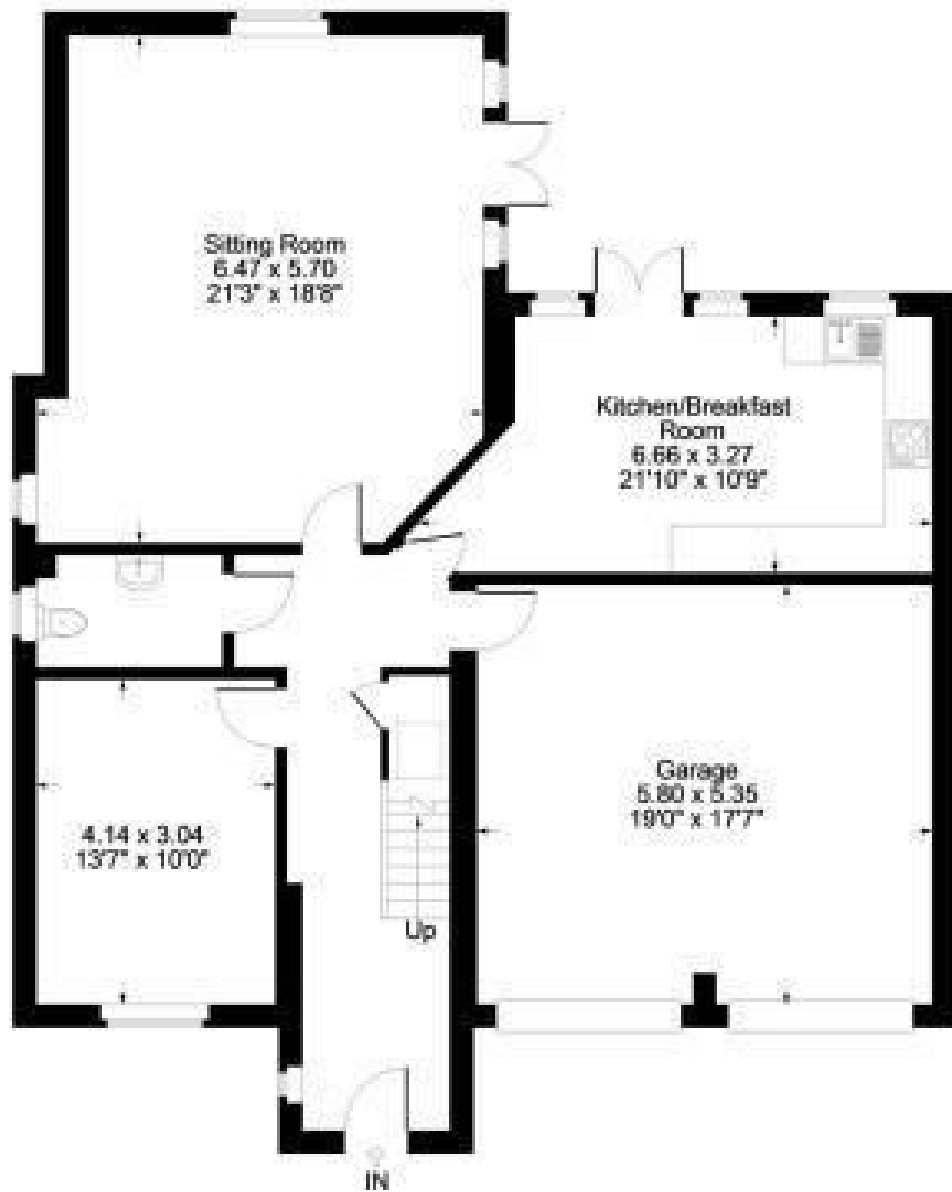
01865 955500

[hello@manoroxford.com](mailto:hello@manoroxford.com)

[www.manoroxford.com](http://www.manoroxford.com)



MANOR  
OXFORD



Ground Floor



First Floor





MANOR  
OXFORD