



HODSONS

PER MONTH

£1,350 Per Month

Valley Road

Dewsbury, WF12 0JE



PROPERTY SUMMARY

We are delighted to bring to the rental market this impressive and truly unique three-bedroom detached residence, occupying a generous plot with large gardens to the front, side, and rear. Situated in the sought-after area of Thornhill, Dewsbury, the property boasts uninterrupted panoramic views across beautiful open countryside.

The accommodation briefly comprises: Side entrance porch leading into a useful utility room with fitted sink, Welcoming hallway with fitted carpet and access to a cloakroom/WC, Spacious lounge with large window to the side elevation, gas fire, and archway through to the Dining room.

Separate modern kitchen featuring a five-ring gas hob and range cooker, Stairs lead down to the lower ground floor, offering: Master double bedroom, Second double bedroom, Third double bedroom, House bathroom/WC, complete with a mixer shower and fitted vanity unit

This property is ideal for those seeking something special, with a combination of character, space, and location, all set within a tranquil setting while remaining close to local amenities and transport links.

Pets Considered

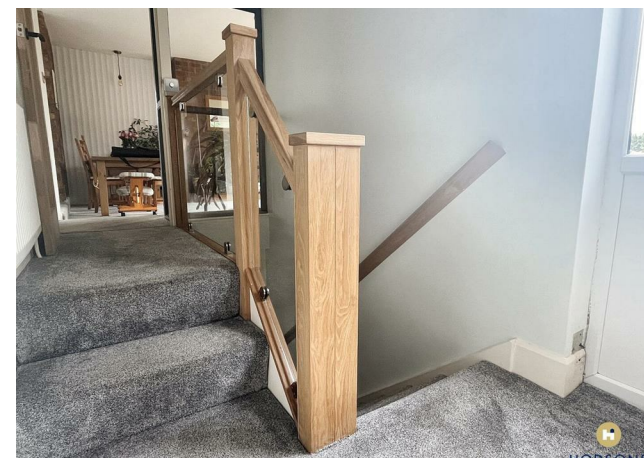
3



1



2





LOCAL AUTHORITY

Kirklees Council

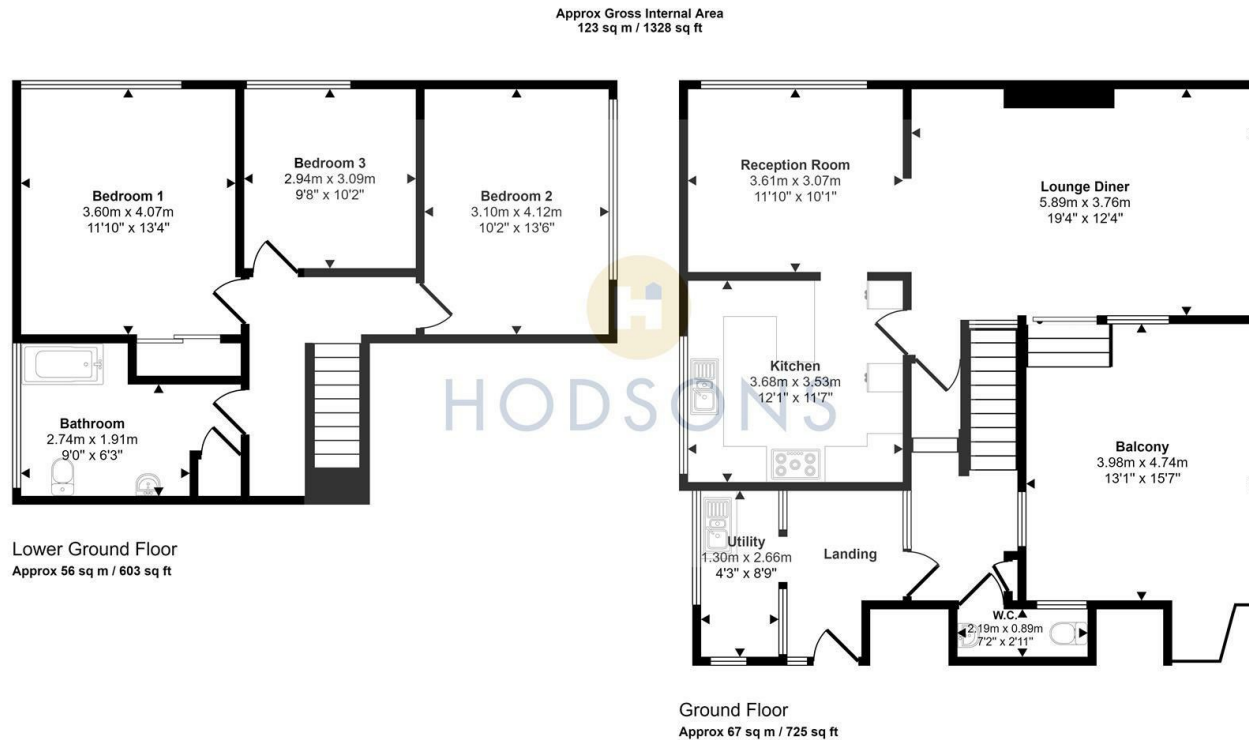
TENURE

COUNCIL TAX BAND

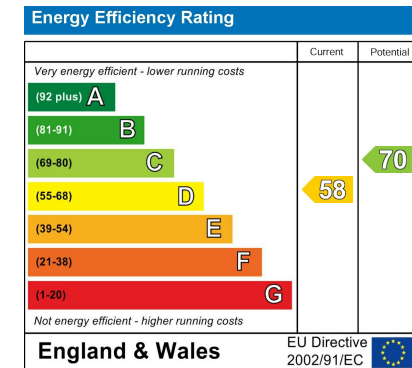
E

VIEWINGS

By prior appointment only



This floorplan is only for illustrative purposes and is not to scale. Measurements of rooms, doors, windows, and any items are approximate and no responsibility is taken for any error, omission or mis-statement. Icons of items such as bathroom suites are representations only and may not look like the real items. Made with Made Snappy 360.



Agents Note: Whilst every care has been taken to prepare these particulars, they are for guidance purposes only. All measurements are approximate and are for general guidance purposes only and whilst every care has been taken to ensure their accuracy, they should not be relied upon and potential buyers/tenants are advised to recheck the measurements