



# HODSONS

PCM

**£1,400 PCM**

**Victoria Street**

Wakefield, WF4 6EH



## PROPERTY SUMMARY

A superb FURNISHED three bedroomed semi detached property close to the many amenities of Horbury Town Centre. The property comprises entrance hall, lounge, dining living kitchen with conservatory. First floor landing, three double bedrooms and house bathroom. To the rear decked patio area and small lawned garden.

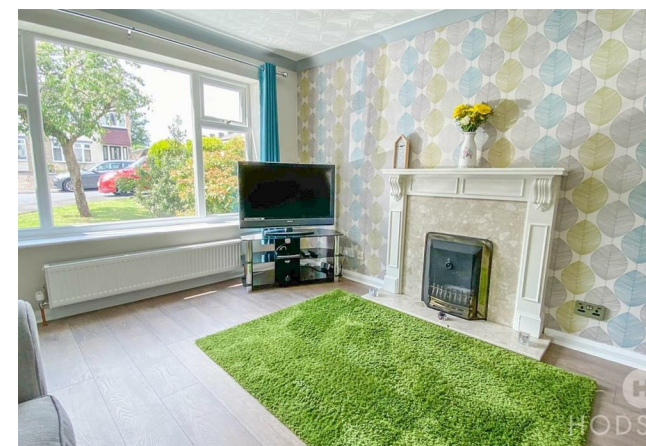
3



1



2



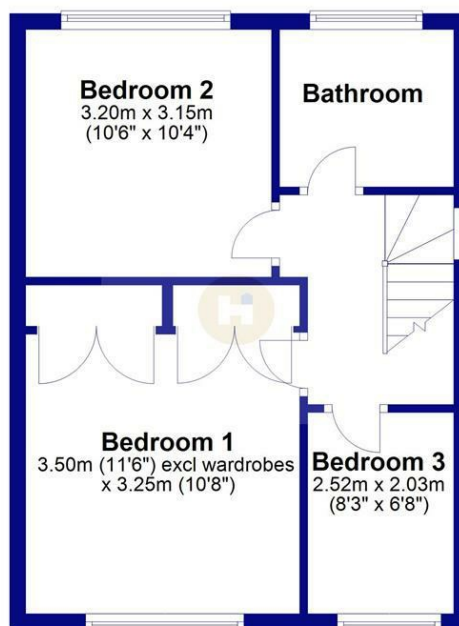




## Ground Floor



## First Floor



## LOCAL AUTHORITY

Wakefield Metropolitan District council

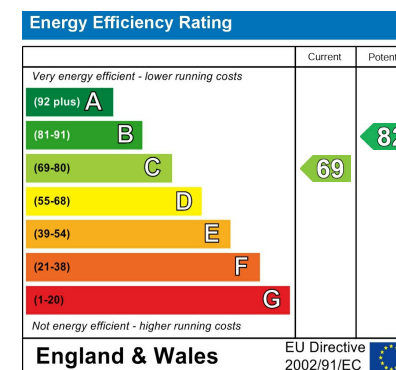
## TENURE

## COUNCIL TAX BAND

C

## VIEWINGS

By prior appointment only



Agents Note: Whilst every care has been taken to prepare these particulars, they are for guidance purposes only. All measurements are approximate and are for general guidance purposes only and whilst every care has been taken to ensure their accuracy, they should not be relied upon and potential buyers/tenants are advised to recheck the measurements



## OFFICE ADDRESS

37-39 George Street  
Wakefield  
West Yorkshire  
WF1 1LX

## OFFICE DETAILS

01924 200544  
wakefield@hodsonsproperty.co.uk  
www.hodsonsproperty.co.uk