



HODSONS



PCM

£1,100 PCM

Heath House

Wakefield, WF1 5SN

PROPERTY SUMMARY

'EXCLUSIVE ONE BEDROOM EXECUTIVE PENTHOUSE APARTMENT' This superb apartment is set within the very impressive 'GRADE II LISTED HEATH HOUSE' with magnificent views over the Heath. The property has been designed to an extremely high standard with quality fixtures and fittings throughout including some of the original features. In brief the property is inclusive of electric heating and comprises impressive dining kitchen with a range of built in appliances and original fireplace feature, large lounge with original fireplace feature, one double bedroom and large en-suite shower room and w.c. There are two allocated parking spaces with this apartment.

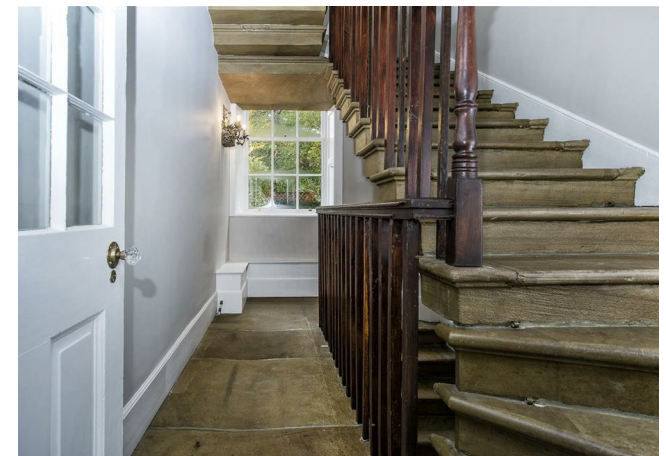
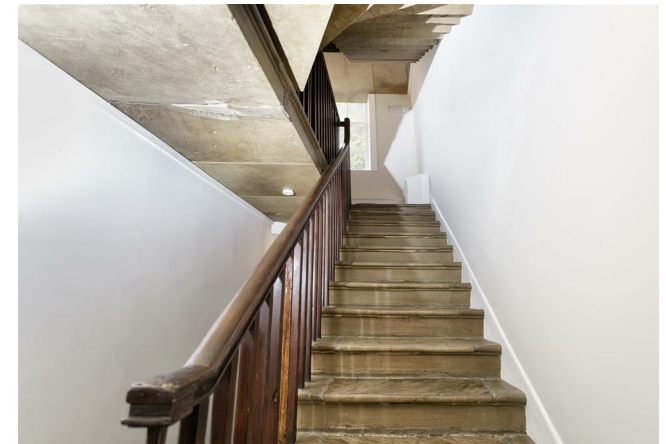
1



1



1





LOCAL AUTHORITY

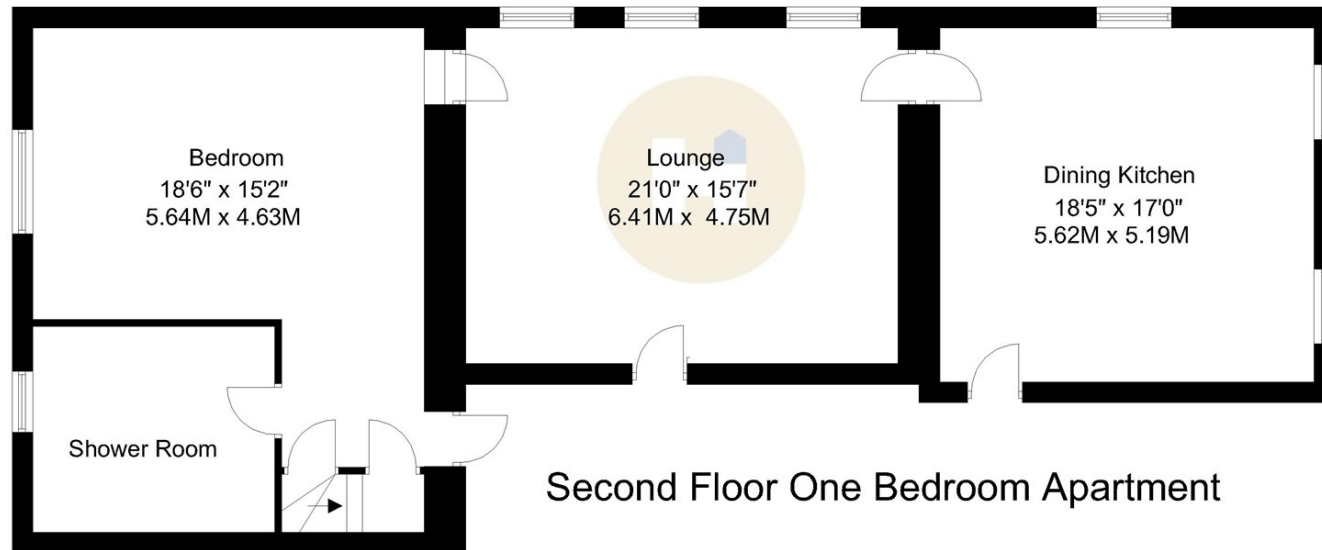
Wakefield Metropolitan District council

TENURE**COUNCIL TAX BAND**

D

VIEWINGS

By prior appointment only



Energy Efficiency Rating		
	Current	Potential
<i>Very energy efficient - lower running costs</i>		
(92 plus) A		
(81-91) B		
(69-80) C		
(55-68) D		
(39-54) E		
(21-38) F		
(1-20) G		
<i>Not energy efficient - higher running costs</i>		
England & Wales	EU Directive 2002/91/EC	

Agents Note: Whilst every care has been taken to prepare these particulars, they are for guidance purposes only. All measurements are approximate and are for general guidance purposes only and whilst every care has been taken to ensure their accuracy, they should not be relied upon and potential buyers/tenants are advised to recheck the measurements

**OFFICE ADDRESS**

37-39 George Street
Wakefield
West Yorkshire
WF1 1LX

OFFICE DETAILS

01924 200544
wakefield@hodsonsproperty.co.uk
www.hodsonsproperty.co.uk