



HODSONS



£1,250

The Hawthorns

Wakefield, WF1 3TL

PROPERTY SUMMARY

We are pleased to welcome to the market, this THREE bed roomed detached family home, located in Outwood. Occupying a cul-de-sac location is this nicely presented three bedroom detached property benefitting from driveway parking, detached garage, conservatory and three double bedrooms including an ensuite. Situated close to Outwood, the property is ideally located for all local shops and amenities including Outwood train station and local schools, whilst only being a short drive away from Wakefield city centre. AVAILABLE NOW.

3

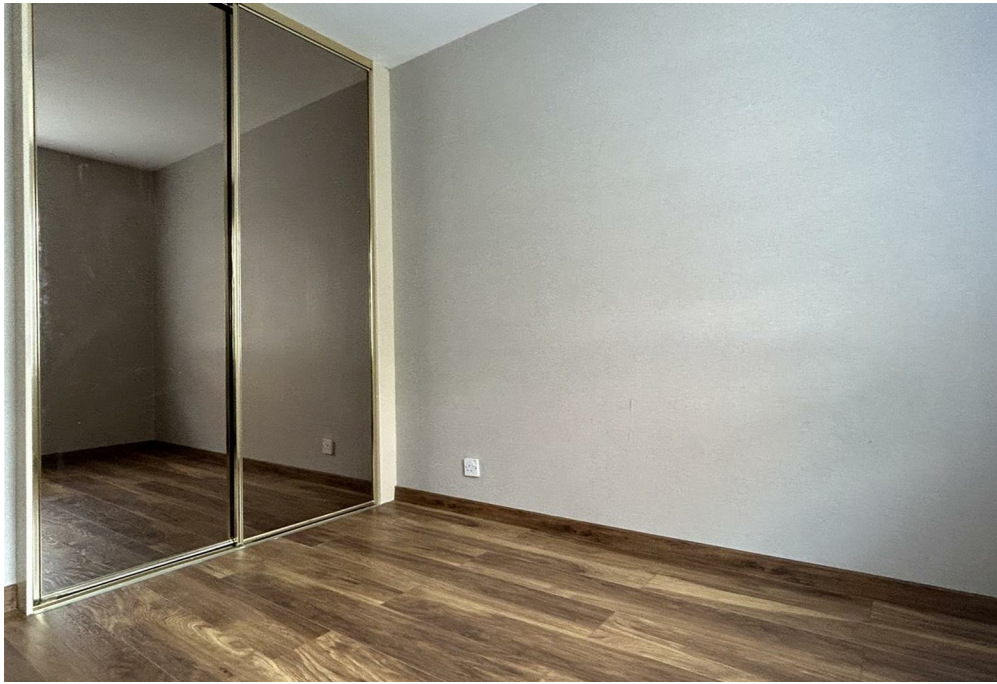


2



1





LOCAL AUTHORITY

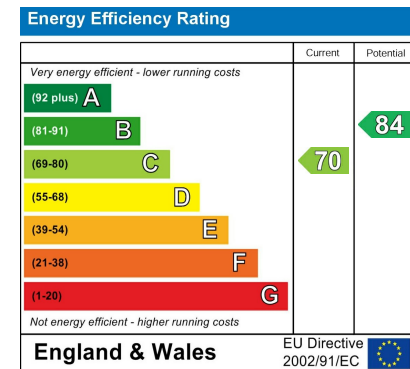
Wakefield Council

TENURE**COUNCIL TAX BAND**

C

VIEWINGS

By prior appointment only



Agents Note: Whilst every care has been taken to prepare these particulars, they are for guidance purposes only. All measurements are approximate and are for general guidance purposes only and whilst every care has been taken to ensure their accuracy, they should not be relied upon and potential buyers/tenants are advised to recheck the measurements

**OFFICE ADDRESS**

37-39 George Street
Wakefield
West Yorkshire
WF1 1LX

OFFICE DETAILS

01924 200544
wakefield@hodsonsproperty.co.uk
www.hodsonsproperty.co.uk