



ST MARTIN'S LE GRAND

16

ST PAUL'S

45,000 sq ft

of contemporary workspace  
for tomorrow's world



View of the reception



Steeped  
in  
History



Work in an  
architectural icon

# A historic façade interwoven with next-generation workspace



16 St Martins Le Grand boasts a fascinating history, from 1925 it served as the headquarters, showroom and dispatch depot for the burgeoning Courtauld family textile business, later to become the world's largest. This iconic building gives a fascinating insight into the City's history as a powerful centre of commerce, and its elegant period features set the perfect backdrop to this newly refined, contemporary workspace opportunity.



Local  
Area

# Restaurants, Cafés and Bars

## Hotels

## Fitness & Green Spaces

## Culture

1. Pret A Manger
2. Millie's Lounge
3. Cabotte
4. Hawksmoor Guildhall
5. Coq D'Argent
6. Barbie Green
7. Pret A Manger
8. Burger and Lobster
9. Black Sheep Coffee
10. Gordon Ramsay Street Burgers
11. Bom Pecado
12. Manicomio
13. Rucolletta
14. Ivy Asia St Paul's
15. Sea Horse Fleet Street
16. Coco di Mama
17. Wren Coffee
18. Dion Bar and Restaurant
19. Mangio Pasta & Bottega
20. Sabien Rooftop Bar



## Restaurants, Cafés and Bars

## Hotels

## Fitness & Green Spaces

## Culture

1. Threadneedles, Autograph Collection
2. The Counting House
3. Montcalm
4. South Place Hotel
5. Apex London Wall
6. The Ned
7. Vintry and Mercer
8. The Westin London City
9. Leonardo Royal London
10. Malmaison
11. Lost Property, St Paul's
12. Club Quarters Hotel
13. The Zetter Townhouse
14. Hyatt Regency London Blackfriars





## Restaurants, Cafés and Bars

## Hotels

## Fitness & Green Spaces

## Culture

1. Finsbury Circus Gardens
2. Digma Fitness Moorgate
3. St Mary Aldermanbury Garden
4. St Alphage Gardens
5. Churchyard of St John Zachary
6. Barry's
7. WIT Training
8. Fitness First Queen Victoria Street
9. Festival Gardens
10. Nuffield Health
11. Postman's Park
12. PureGym
13. Charterhouse Square
14. Virgin Active
15. Smithfield Rotunda Garden
16. Christchurch Greyfriars Church Garden



## Restaurants, Cafés and Bars

## Hotels

## Fitness & Green Spaces

## Culture

1. Guildhall Art Gallery
2. Roman Wall
3. Barbican Centre
4. Shakespeare's Globe
5. St Paul's Cathedral
6. Tate Modern
7. Carter Lane Gallery
8. Southbank Centre
9. Dr Johnson's House
10. The Ingram Collection





Postman's Park

Relax and unwind

# Abundant Green Spaces all within a short walk



Greenhouse  
The Barbican





St Alphege Garden



Festival Gardens



The Barbican

Culture on  
your doorstep

# A remarkable location immersed in culture



Guildhall Art Gallery

Enjoy the hustle & bustle of The City

# Surrounded by diverse opportunities for food & drink



Ivy Asia



Club Gascon



The Rising Sun



Barbie Green



Discover  
the  
Details

- 7 BERDEK
- 8 LOGI MEDIA
- 5 DECKER GROUP
- 4 LINDOGREN INC.
- 3 GLOBEC CORPORATION
- 2 HOOIJ
- 1 INITECH
- 0 BOYLENT
- 1 GYM
- 2 OCCUPIER FACILITIES



View of the reception





View of the main entrance facing St Pauls



View of the rear Foster Lane entrance

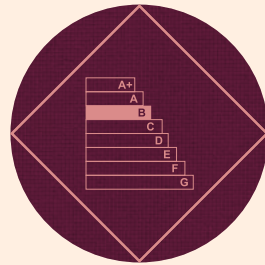
# Summary Specification



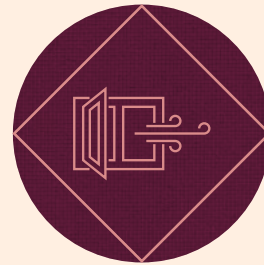
BREEAM Excellent



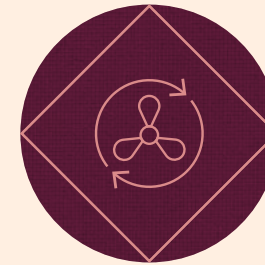
WIREDScore Platinum



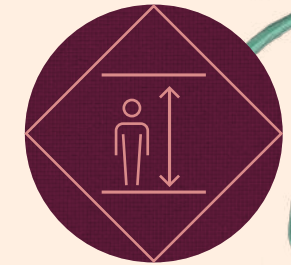
EPC B



Openable windows



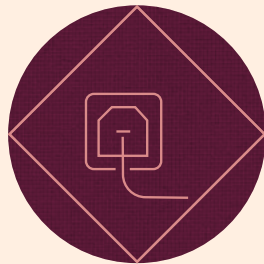
High efficiency VRF heat pump system for heating and cooling



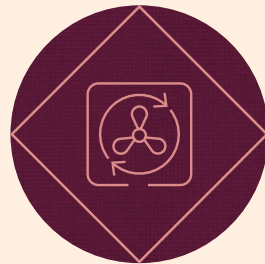
3040-3680mm Floor to Ceiling Height



High efficiency LED lighting with occupancy controls throughout



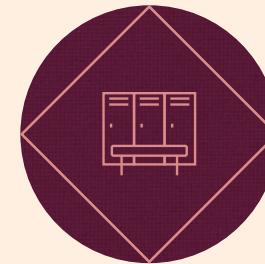
100% Electric Building



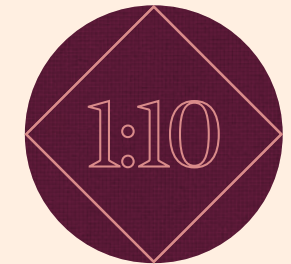
Low energy central fresh air distribution system with demand control



Circular economy measures



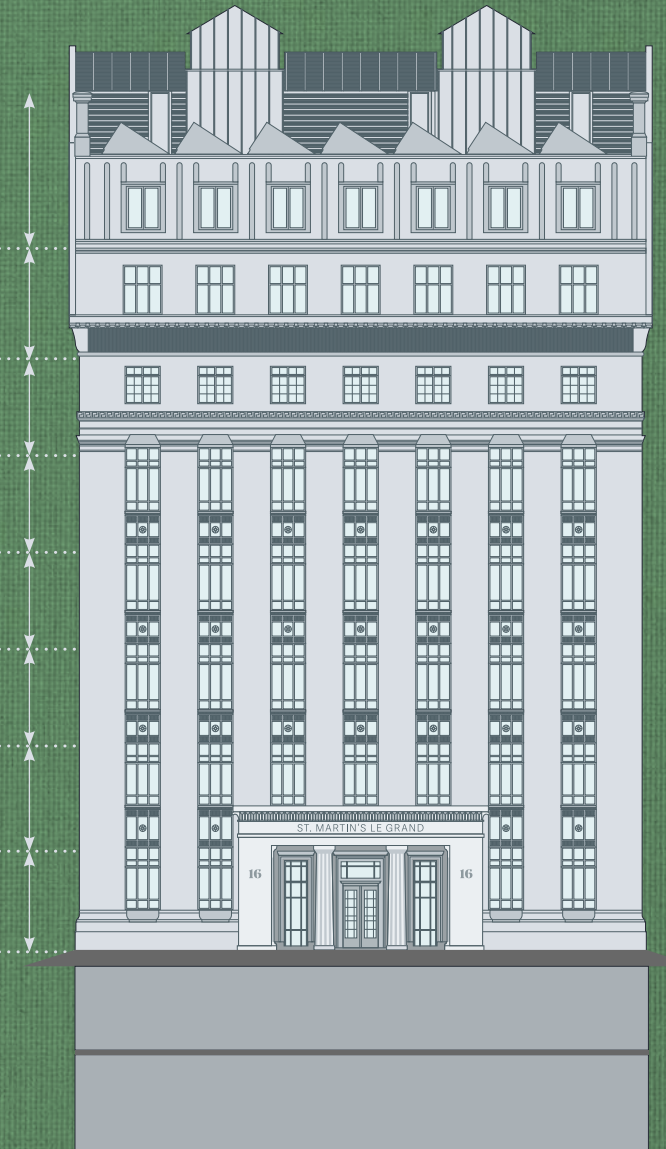
9 showers, 103 lockers and 81 cycle spaces with Brompton lockers



1:10 Occupational density

# The Building

7 <sup>th</sup> Floor	4,887 sq ft   454 sq m	3470 mm
6 <sup>th</sup> Floor	5,544 sq ft   515 sq m	3355 mm
5 <sup>th</sup> Floor	6,150 sq ft   571 sq m	3040 mm
4 <sup>th</sup> Floor	5,691 sq ft   529 sq m	3350 mm
3 <sup>rd</sup> Floor	6,103 sq ft   567 sq m	3515 mm
2 <sup>nd</sup> Floor	6,125 sq ft   569 sq m	3530 mm
1 <sup>st</sup> Floor	6,114 sq ft   568 sq m	3680 mm
Ground Floor	4,736 sq ft   440 sq m	3675 mm
Total	45,350 sq ft   4,213 sq m	



# Seventh Floor

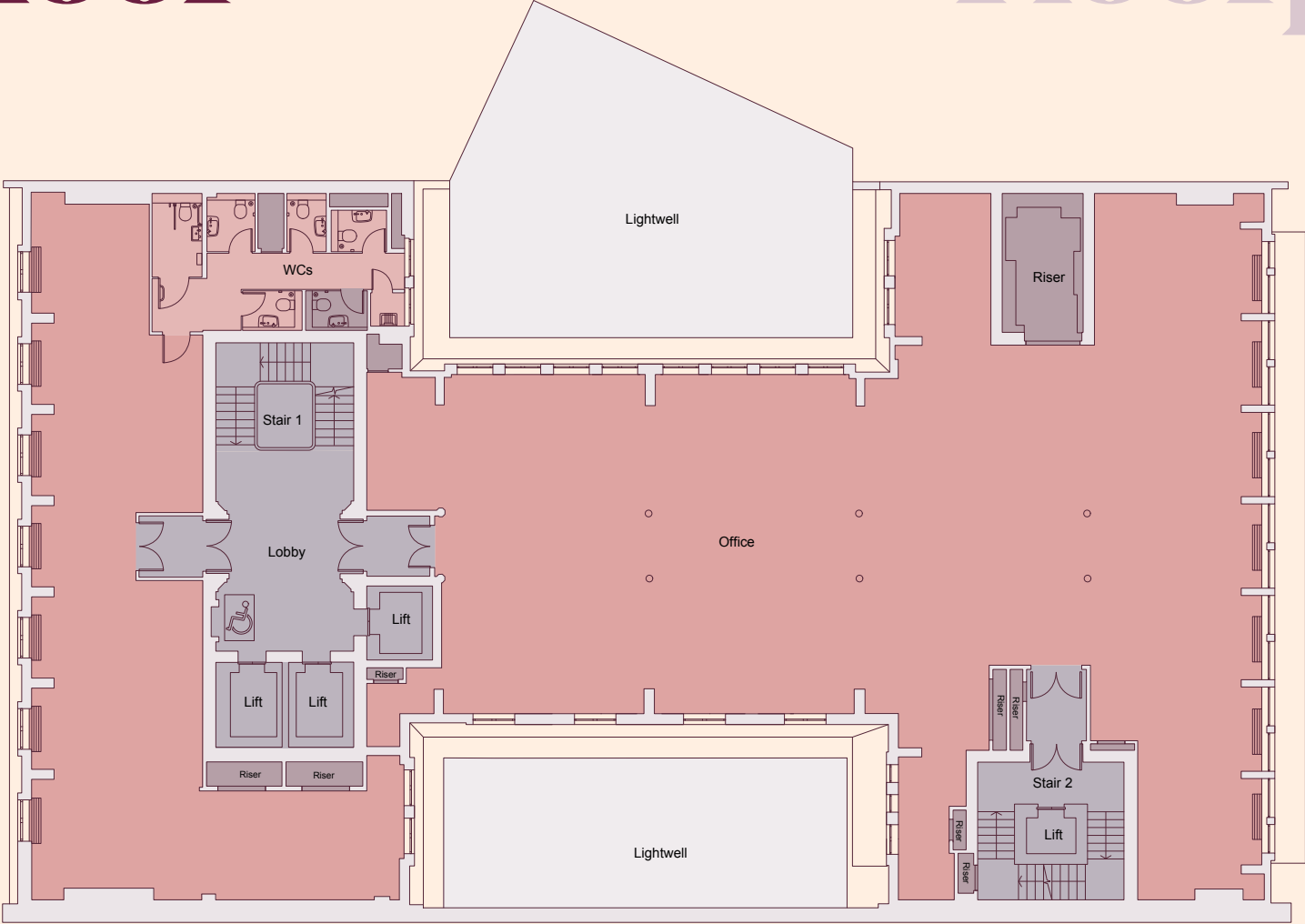
# Floorplan

4,887 sq ft  
454 sq m

- Available
- WCS
- Landlord Demise
- Core

ST MARTINS LE GRAND

FOSTER LANE





View of the 7th Floor

# Sixth Floor

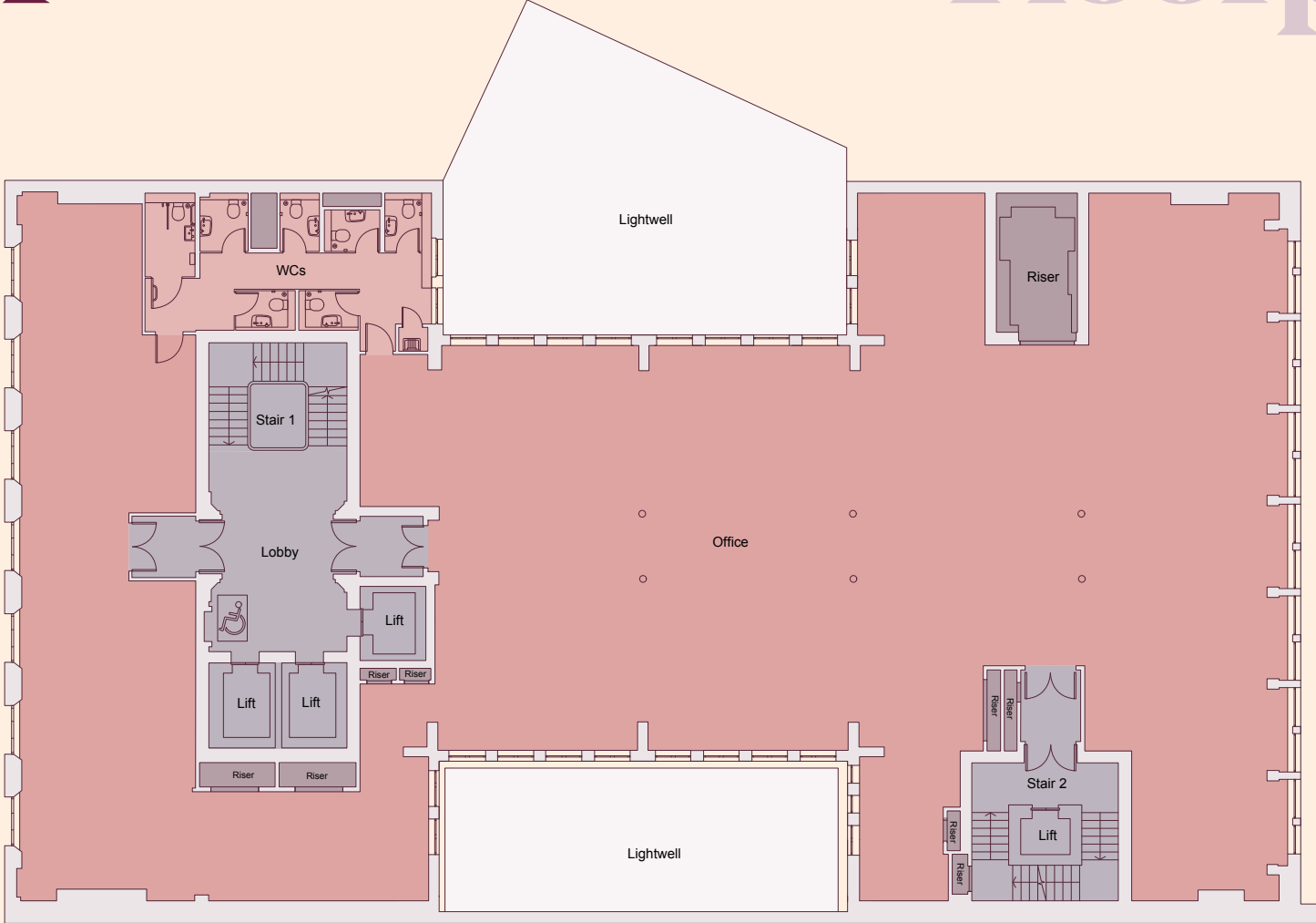
5,544 sq ft  
515 sq m

- Available
- WCS
- Landlord Demise
- Core

# Floorplan

ST MARTINS LE GRAND

FOSTER LANE



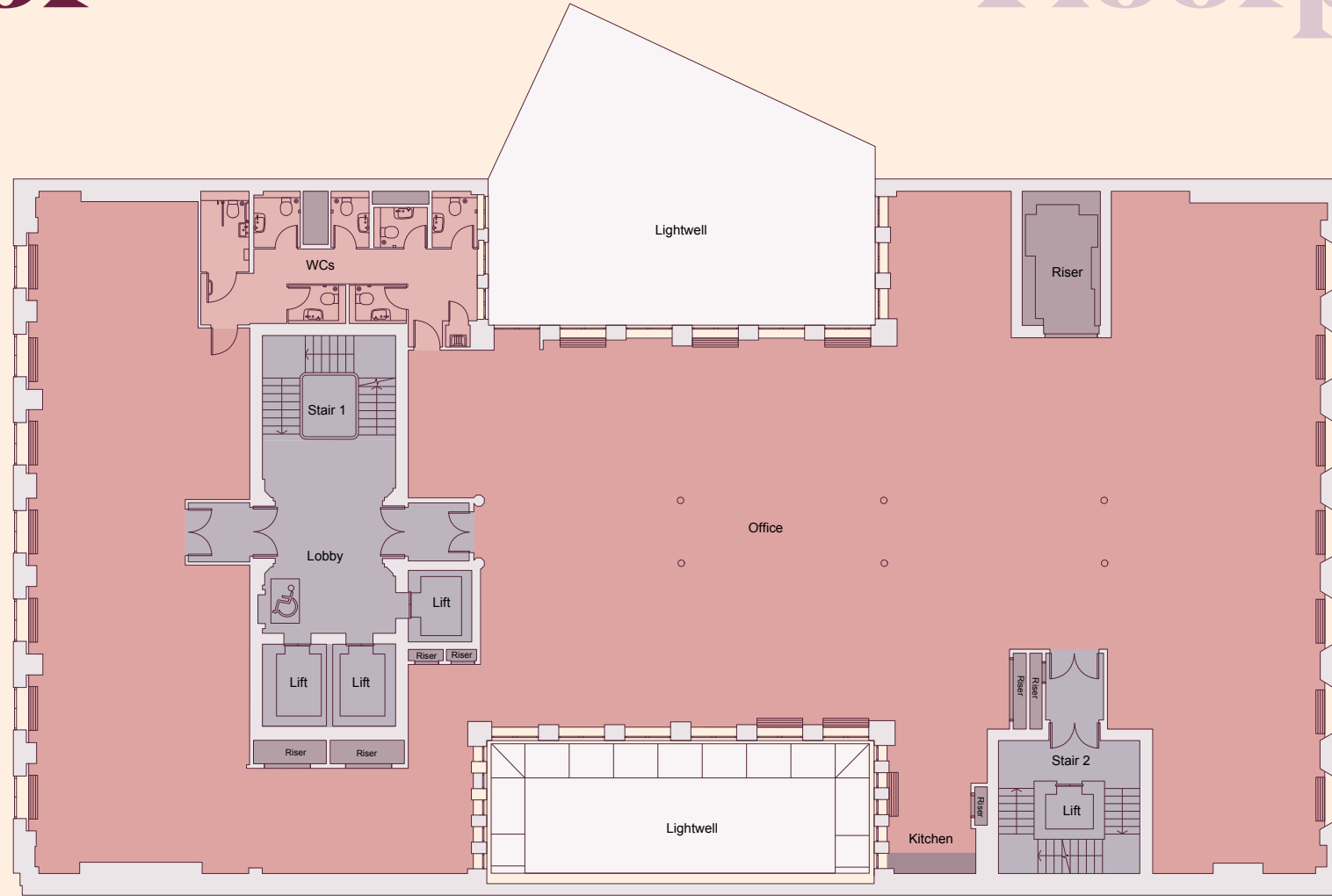
# Fifth Floor

6,150 sq ft  
571 sq m

- Available
- WCS
- Landlord Demise
- Core



ST MARTINS LE GRAND



FOSTER LANE

# Floorplan



View of the 5th Floor



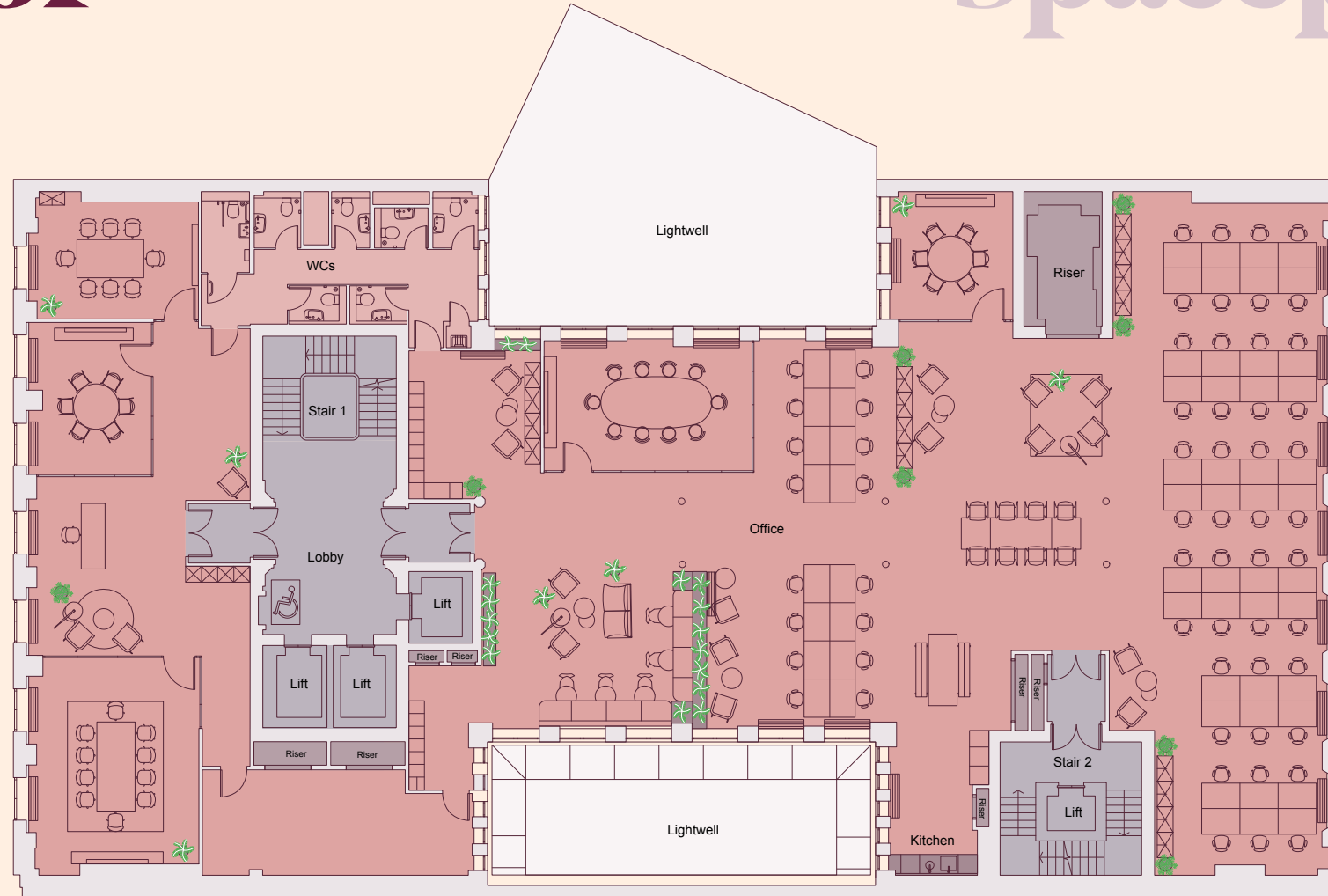
# Fifth Floor

# Spaceplan

6,150 sq ft  
571 sq m

- Available
- WCS
- Landlord Demise
- Core

ST MARTINS LE GRAND



FOSTER LANE



View of the 5th Floor

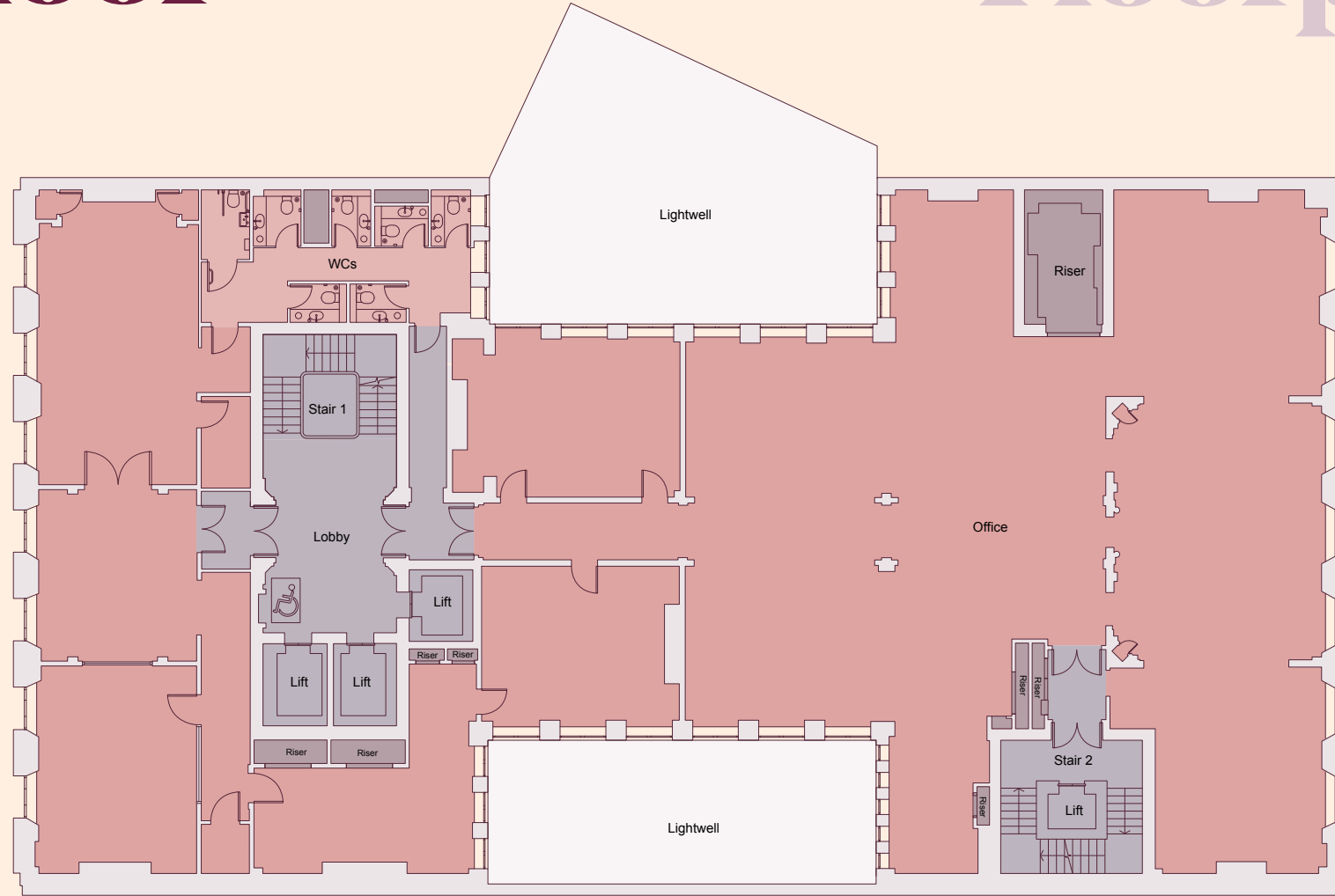
# Fourth Floor

# Floorplan

5,691 sq ft  
529 sq m

- Available
- WCS
- Landlord Demise
- Core

ST MARTINS LE GRAND



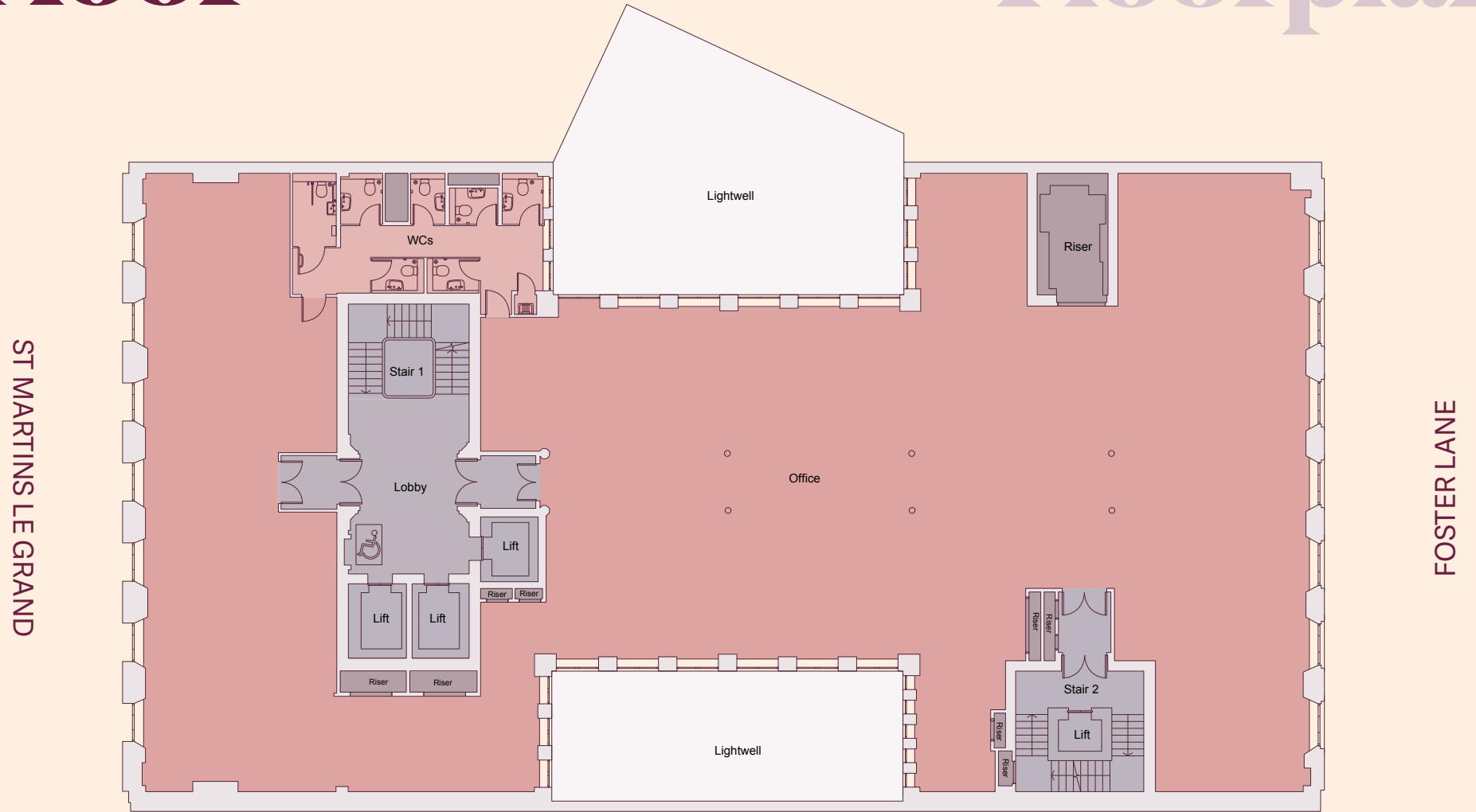
FOSTER LANE

# Third Floor

6,103 sq ft  
567 sq m

- Available
- WCS
- Landlord Demise
- Core

# Floorplan





View of the 3rd Floor

# Second Floor

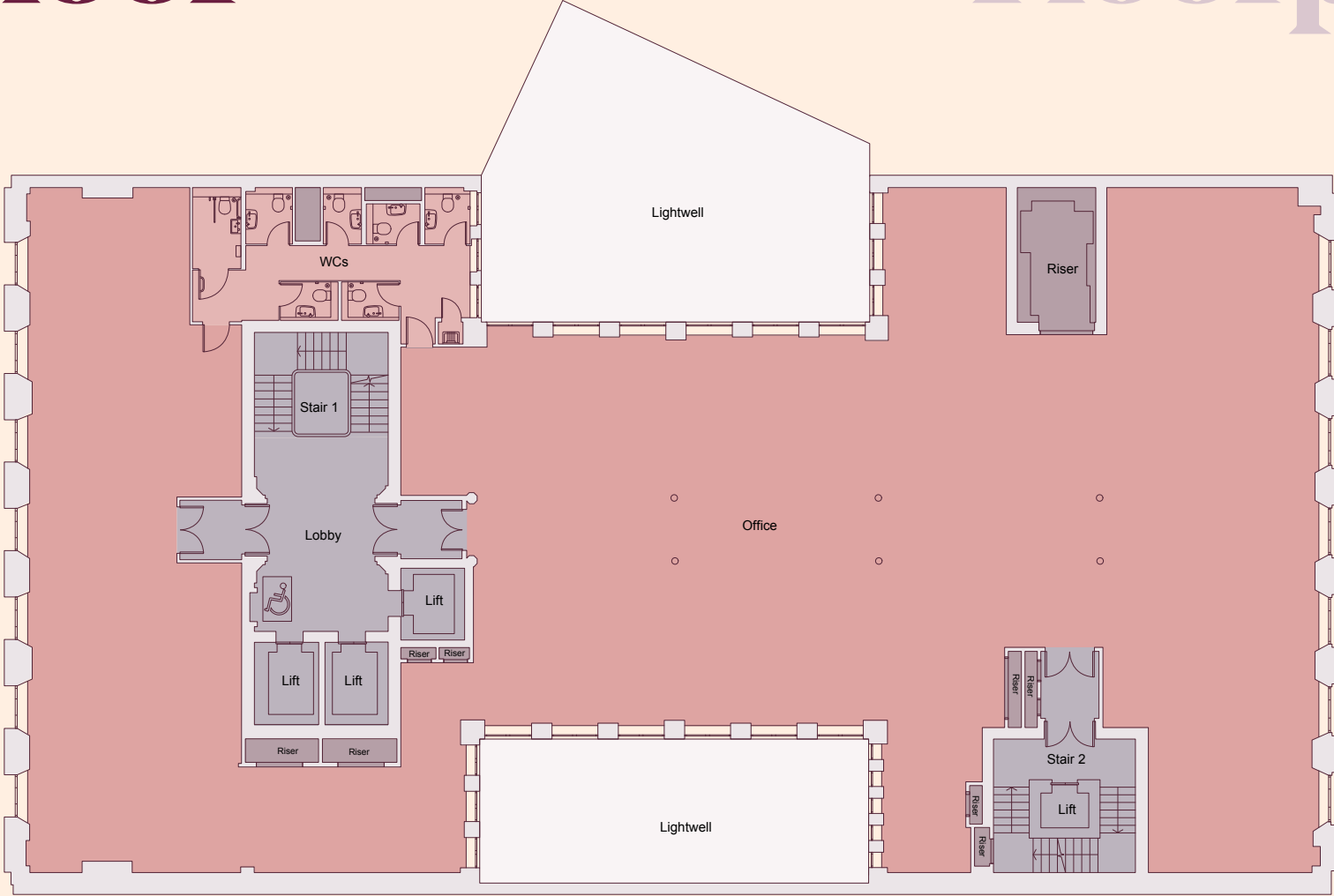
# Floorplan

6,125 sq ft  
569 sq m

- Available
- WCS
- Landlord Demise
- Core



ST MARTINS LE GRAND



FOSTER LANE

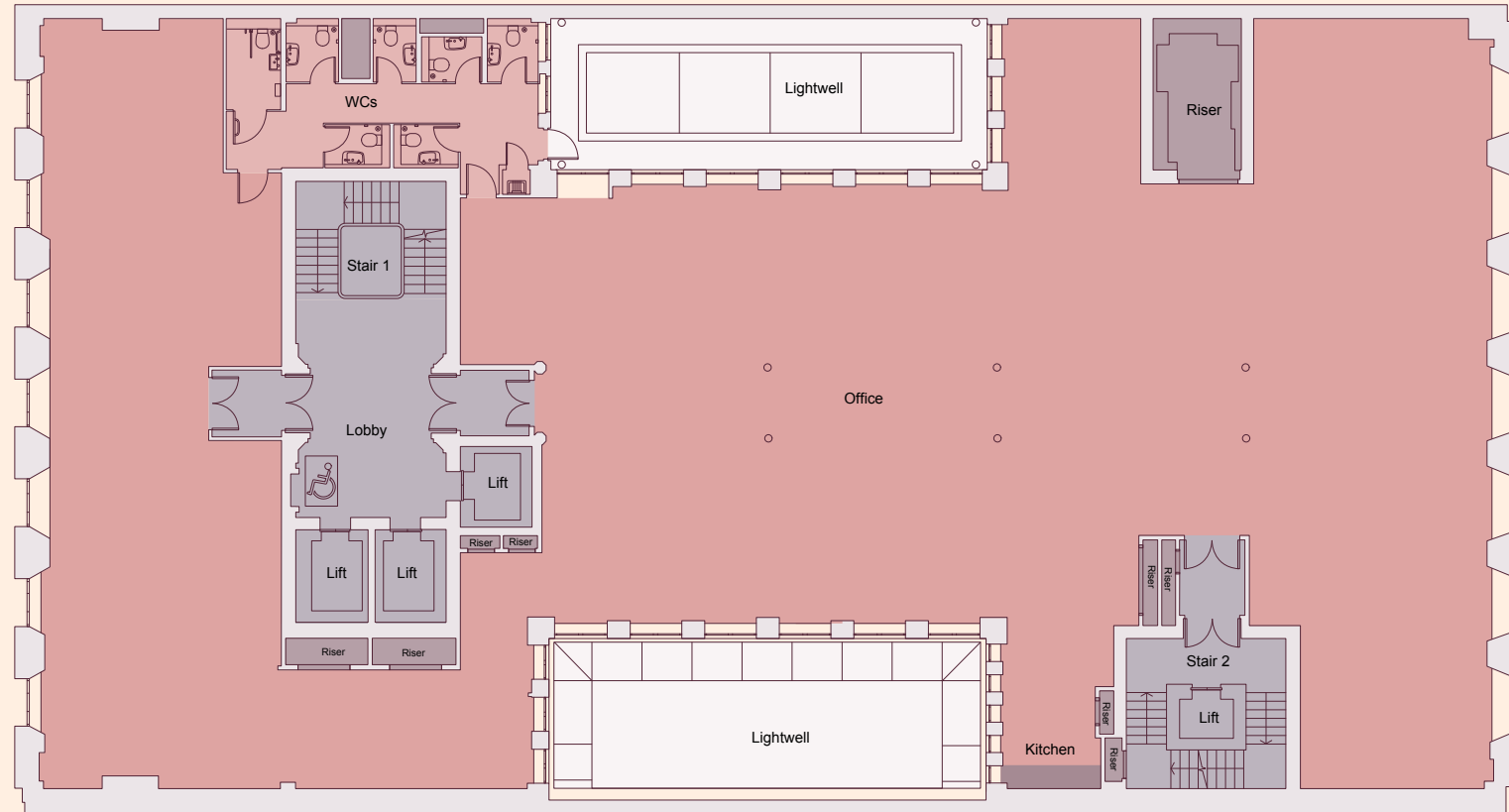
# First Floor

6,114 sq ft  
568 sq m

- Available
- WCS
- Landlord Demise
- Core

# Floorplan

ST MARTINS LE GRAND



FOSTER LANE

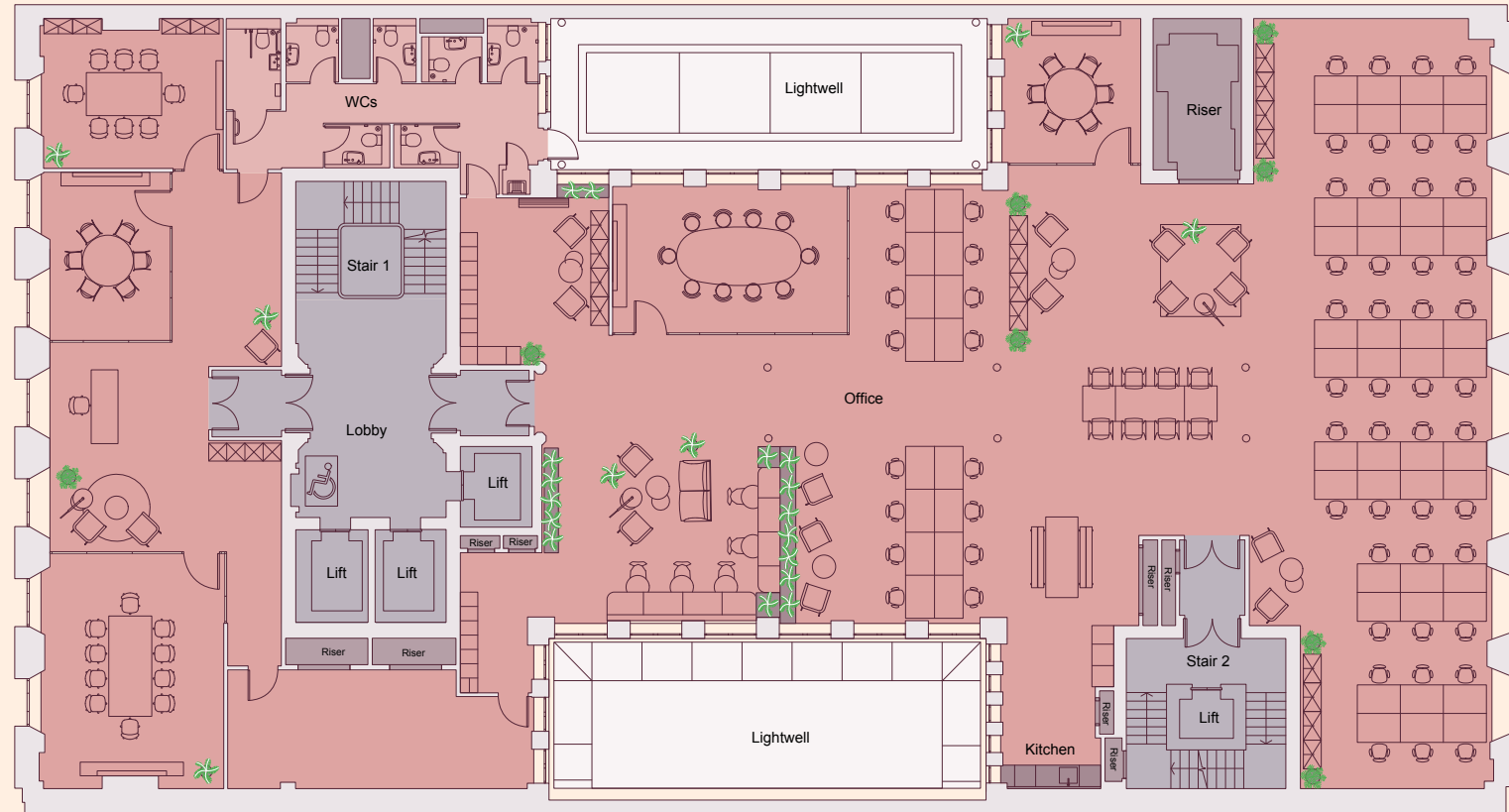
# First Floor

# Spaceplan

6,114 sq ft  
568 sq m

- Available
- WCS
- Landlord Demise
- Core

ST MARTINS LE GRAND



FOSTER LANE

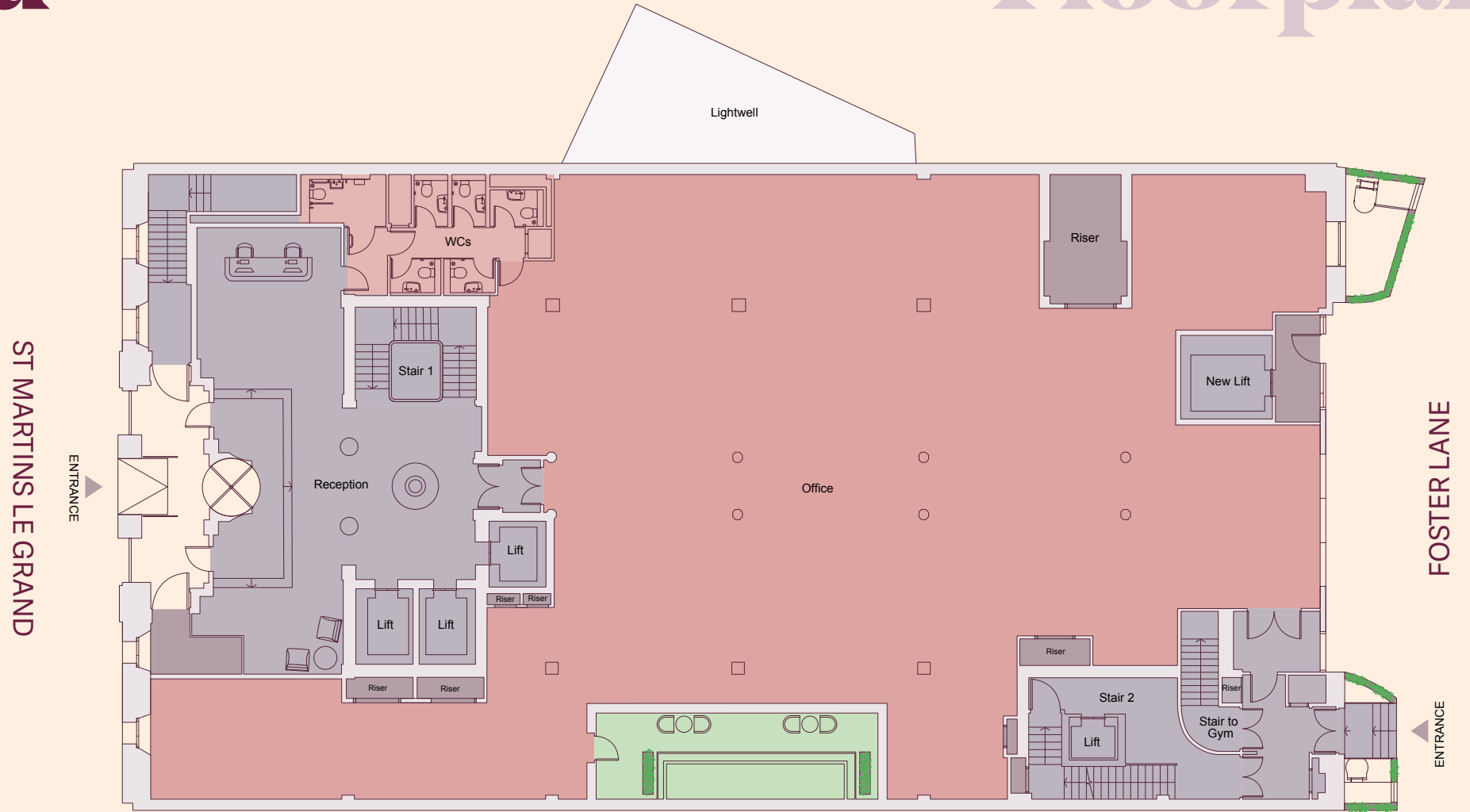


# Ground

4,736 sq ft  
440 sq m

- Available
- WCS
- Landlord Demise
- Core
- Outdoor Space

# Floorplan





View of the Ground Floor

# Basement

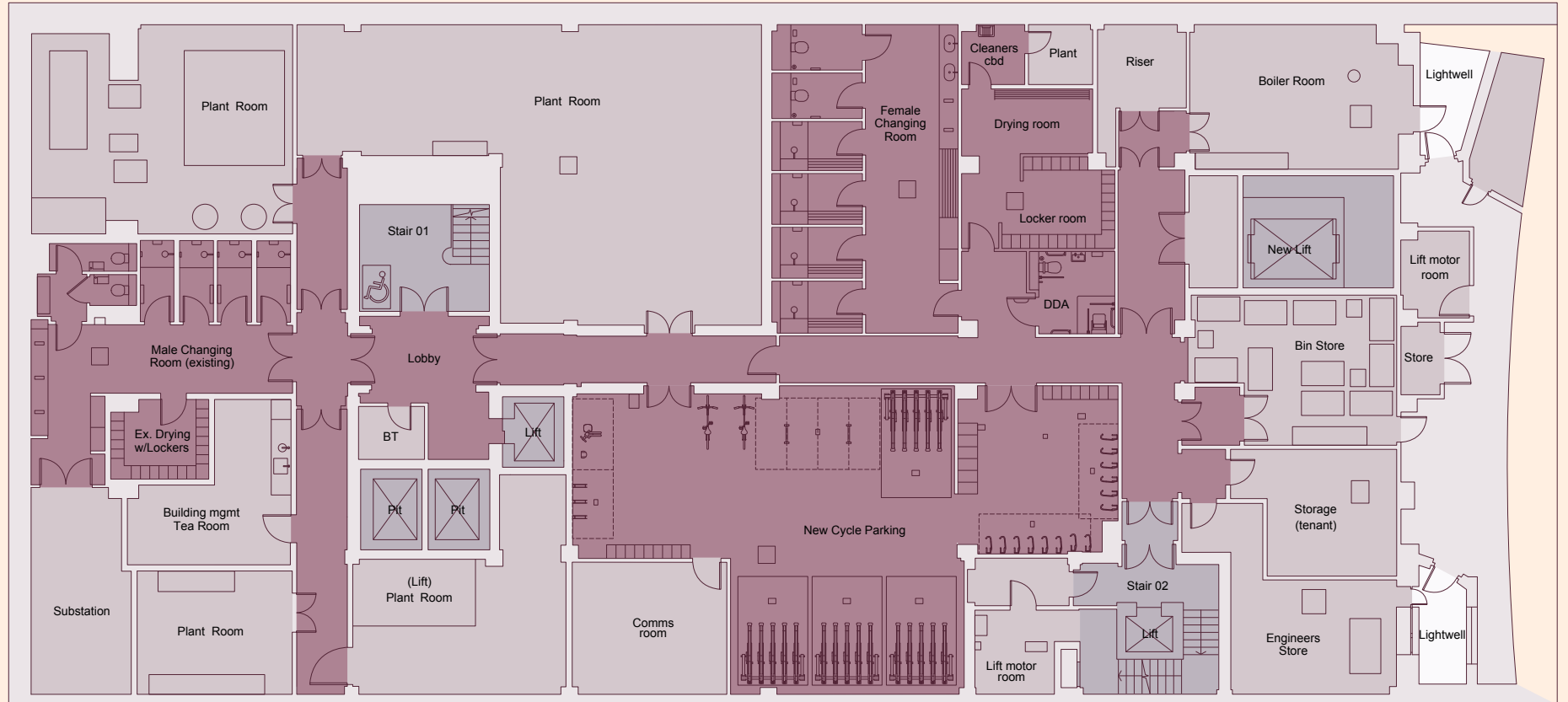
# Floorplan

● Tenant Facilities

● Landlord Area

- 9 showers
- 103 lockers
- 81 cycle spaces with Brompton lockers

ST MARTINS LE GRAND



FOSTER LANE





ST. MARTIN'S LE GRAND

16

16

16

View of the facade

A Development By



**Rob Macnab**

[rob.macnab@knightfrank.com](mailto:rob.macnab@knightfrank.com)

M: +44 7905 300 160

**Harriet Oury**

[harriet.oury@knightfrank.com](mailto:harriet.oury@knightfrank.com)

M: +44 7976 730 101

Important notice relating to the Misrepresentation Act 1967 and the Property Misdescriptions Act 1991: (i) the particulars are set out as a general outline only for guidance of intending purchasers or lessees and do not constitute, nor constitute part of, an offer or contract (ii) all descriptions, dimensions, references to condition and necessary permission for use and occupation, and other details are given in good faith and are believed to be correct, but any intending purchasers or occupiers should not rely on them as statements or representations of fact, but must satisfy themselves by inspection or otherwise as to the correctness of each of them. June 2023.