



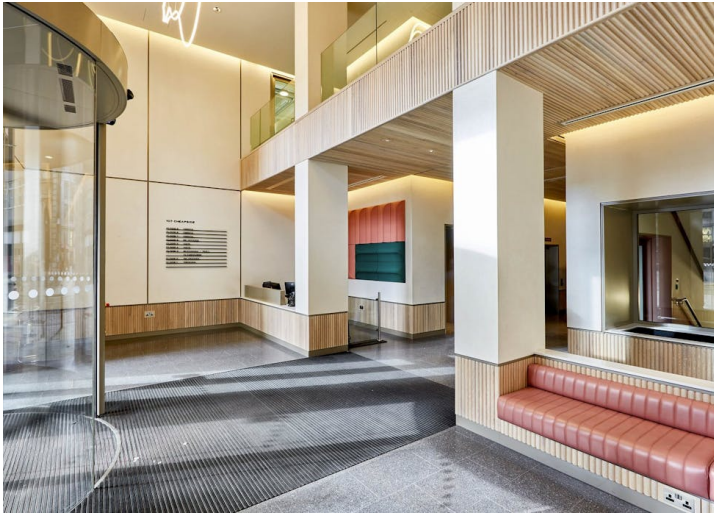
Comprehensively  
refurbished 1st Floor  
with new reception and  
end-of-trip facilities.

- Prominent Cheapside location
- New double-height reception
- New CAT A refurbishment
- Exposed services
- 2.75m floor to ceiling height
- New end of trip facilities

# 107 Cheapside

London, EC2V 6DN

**AVISON  
YOUNG**



## Summary

**Available Size** 8,702 sq ft / 808.44 sq m

**Rates Payable** £25 per sq ft

**Service Charge** £14 per sq ft

**EPC** B

## Property Highlights

The 1st Floor has been comprehensively refurbished. The building offers a new contemporary reception, common parts and end of trip facilities.

## Location

107 Cheapside is a highly prominent office building located in the core of the City of London, midway between Bank and St Paul's. The building benefits from a significant frontage onto Cheapside. Bank (Central, Northern and Waterloo & City lines, and the DLR) and St Paul's (Central line) Underground stations are located under 5 minutes' walk from the building.

## Accommodation

Name	sq ft	Rent (sq ft)	Rates Payable (sq ft)	Service Charge (sq ft)	Availability
1st - Part	8,702	£62.50	£25	£12	Available
<b>Total</b>	<b>8,702</b>	<b>£62.50</b>	<b>£25</b>	<b>£12</b>	

## Specification

- Cycle racks
- 5 x passenger lifts
- Shower facilities
- New exposed M&E
- Finished floor to ceiling height of 2.75m
- Fully accessible raised flooring
- LED lighting
- Self-contained entrance option



### James Walker

02079112049 | 07957388184  
james.walker@avisonyoung.com



### Harriet De Freitas

07940516827 | (0)7940 516 827  
harriet.defreitas@avisonyoung.com