



22 Market Street

Lutterworth, LE17 4EH

Guide price £220,000

LOUNGE & DINING KITCHEN



Description

Welcome to Market Street, Lutterworth - a charming location that could be the perfect setting for your new home! This semi-detached house boasts a spacious reception room, three cosy bedrooms, and a well-maintained bathroom.

Situated in the heart of Lutterworth, this property offers convenience and comfort. With parking space for a vehicle and a garage at the rear, you'll never have to worry about finding a place to park again.

Inside, you'll find a delightful kitchen diner, perfect for hosting family meals or entertaining guests. The two double bedrooms AND 1 single Bedroom, provide ample space for relaxation and privacy, making this house ideal for families or those who enjoy having extra space or even an investor looking for a Buy to Let.

Don't miss out on the opportunity to make this lovely semi-detached property your new home. Contact us today to arrange a viewing and discover the endless possibilities that Market Street has to offer!

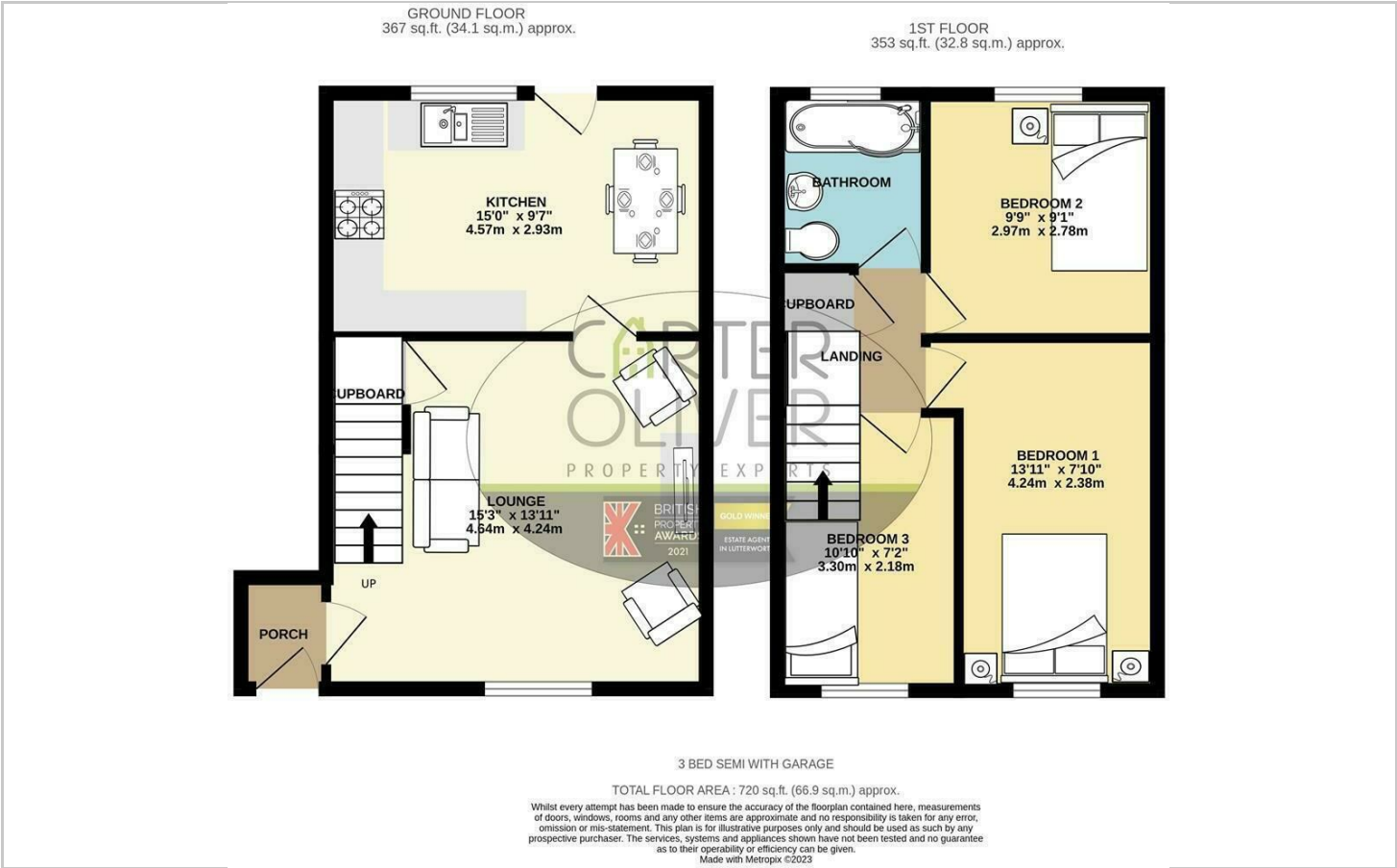
- TOWN CENTRE LOCATION
- 2 DOUBLE BEDROOMS & 1 SINGLE
- LARGE LOUNGE
- GARAGE AND PARKING SPACE
- EPC C / COUNCIL TAX B
- NO CHAIN
- LARGE KITCHEN/DINER
- BATHROOM WITH SHOWER OVER
- GREAT TRANSPORT LINKS
- FREEHOLD



PRIVATE REAR GARDEN + SINGLE GARAGE & PARKING SPACE



Floor Plan



Area Map



Viewing

Please contact our LUTTERWORTH Office on 01455 248033 if you wish to arrange a viewing appointment for this property or require further information.

These particulars, whilst believed to be accurate are set out as a general outline only for guidance and do not constitute any part of an offer or contract. Intending purchasers should not rely on them as statements of representation of fact, but must satisfy themselves by inspection or otherwise as to their accuracy. No person in this firms employment has the authority to make or give any representation or warranty in respect of the property.

Energy Efficiency Graph

