



3 Foxfield Close

Lutterworth, LE17 4FT

Guide price £430,000

SOUTH WEST FACING REAR GARDEN WITH CONSERVATORY, DINING ROOM AND LOUNGE



Description

Nestled in a small development of executive homes, Foxfield Close, is a modern detached home offering an exceptional living experience. Spanning approx 1,400 square feet, it boasts 4 spacious bedrooms, 3 well-appointed washrooms, 2 Large Receptions and a South West facing private garden, making it ideal for families or those seeking extra space to work from home.

The property benefits from a 2 car side by side drive with integral garage, a valuable feature in today's busy world. The area is enriched with green spaces and leisure facilities, perfect for outdoor activities and family outings.

Conveniently located, with easy access to the Midlands motorway network, making commuting a breeze. Furthermore, the vibrant Lutterworth town centre is just a short walk away, where you can enjoy a variety of shops, cafes, and amenities including Aldi, Morrisons and Waitrose, within walking distance, ensuring daily errands are effortlessly managed. Great schools for all ages are on your doorstep.

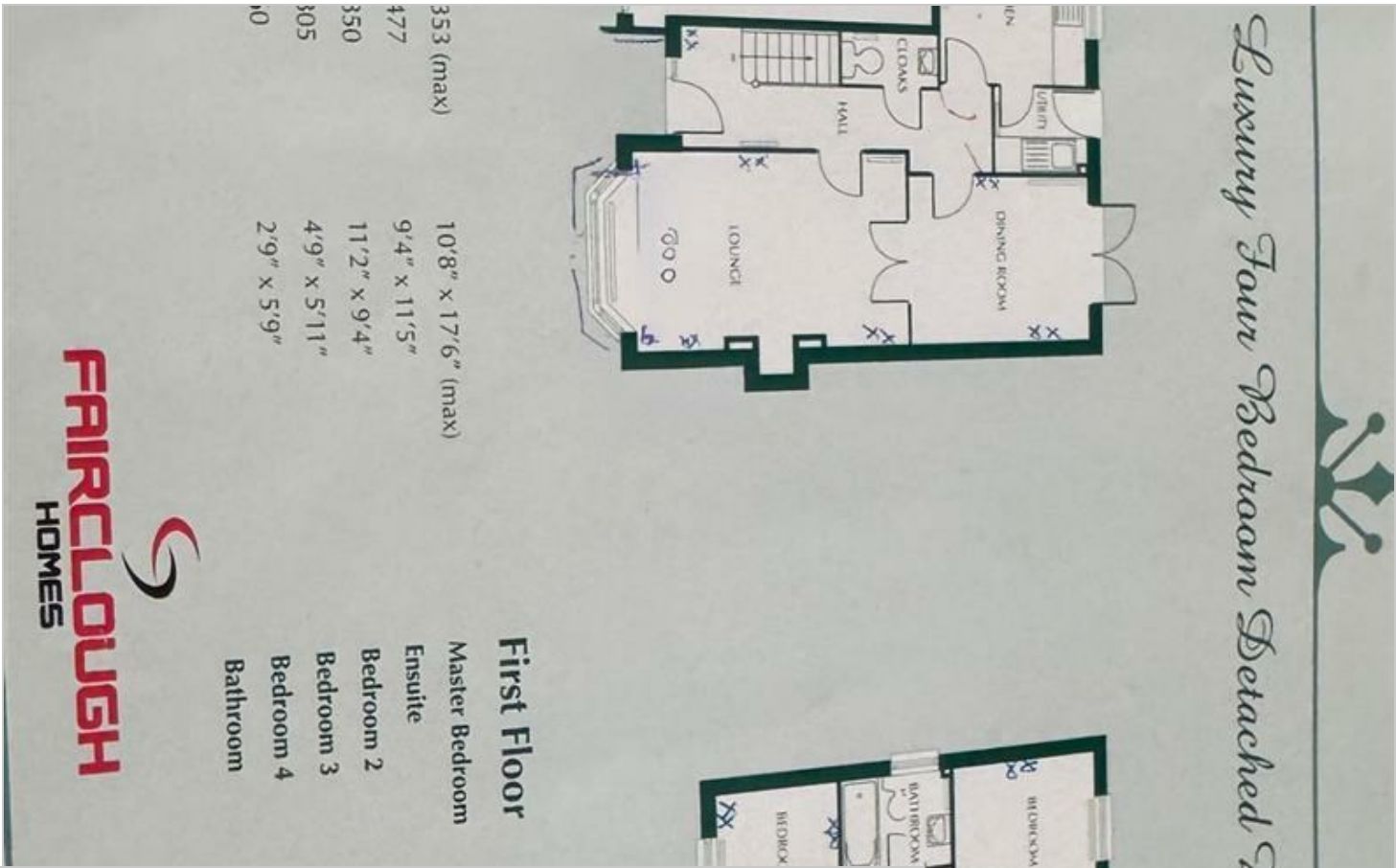
- EXECUTIVE DETACHED
- PRINCIPAL WITH ENSUITE SHOWER ROOM
- 3 RECEPTION ROOMS
- UTILITY LEADING ONTO GARDEN
- COUNCIL TAX BAND - E / EPC - TO BE CONFIRMED
- 4 GOOD BEDROOMS
- FAMILY BATHROOM WITH SHOWER OVER BATH
- BREAKFAST KITCHEN TO REAR (POTENTIAL TO EXTEND)
- PRIVATE SOUTH FACING REAR GARDEN
- FREEHOLD / NO ESTATE CHARGE



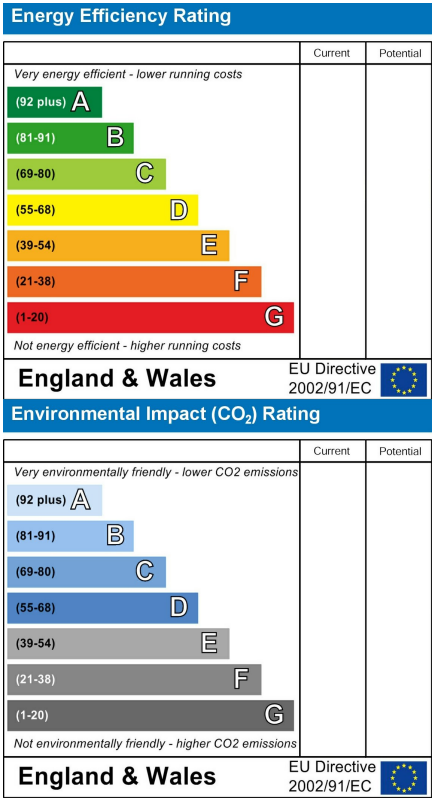
BREAKFAST KITCHEN AND UTILITY WITH 4 GOOD BEDROOMS INCLUDING THE
PRINCIPAL ENSUITE SHOWER ROOM



Floor Plan



Energy Efficiency Graph



Viewing

Please contact our LUTTERWORTH Office on 01455 248033 if you wish to arrange a viewing appointment for this property or require further information.

These particulars, whilst believed to be accurate are set out as a general outline only for guidance and do not constitute any part of an offer or contract. Intending purchasers should not rely on them as statements of representation of fact, but must satisfy themselves by inspection or otherwise as to their accuracy. No person in this firms employment has the authority to make or give any representation or warranty in respect of the property.