



5 Dale Close

Lutterworth, LE17 4FW

**Guide price £375,000**



# LARGE LANDSCAPED REAR GARDEN



## Description

This exceptional home on Dale Close, Kingsbury Park, Lutterworth is a rare opportunity to secure a modern, spacious property in a prime location, perfect for those seeking comfort and convenience. One of the standout features is its large plot, providing ample outdoor space to play or for hosting gatherings with friends and family. The driveway has parking for up to 3 vehicles plus a single garage, a rare find in many modern homes.

The house features 3 spacious bedrooms, each with fitted wardrobes designed as a peaceful retreat. With 3 bathrooms, including en-suite facilities, morning routines will be a breeze, ensuring ample privacy for everyone. The inviting reception room serves as a welcoming space for relaxation and the large open-plan kitchen/dining/snug is sure to be the heart of the home with entertaining the key. The market town allows residents to enjoy a vibrant community atmosphere with a variety of pubs, cafes, groceries, independent stores, leisure facilities & schools

- 3 DOUBLE BEDROOM
- LARGE KITCHEN/DINER/SNUG - PATIO DOORS TO REAR
- LOUNGE WITH PATIO DOORS TO REAR
- PRINCIPAL BEDROOM WITH DRESSING AREA & ENSUITE
- ESTATE CHARGE APPROX - £151.00 PER ANNUM
- QUIET CUL-DE-SAC LOCATION
- SINGLE GARAGE WITH PARKING FOR 3 FURTHER CARS
- LARGE GARDEN HAVING BEEN RECENTLY LANDSCAPED
- FREEHOLD / EPC-B / COUNCIL TAX BAND - D



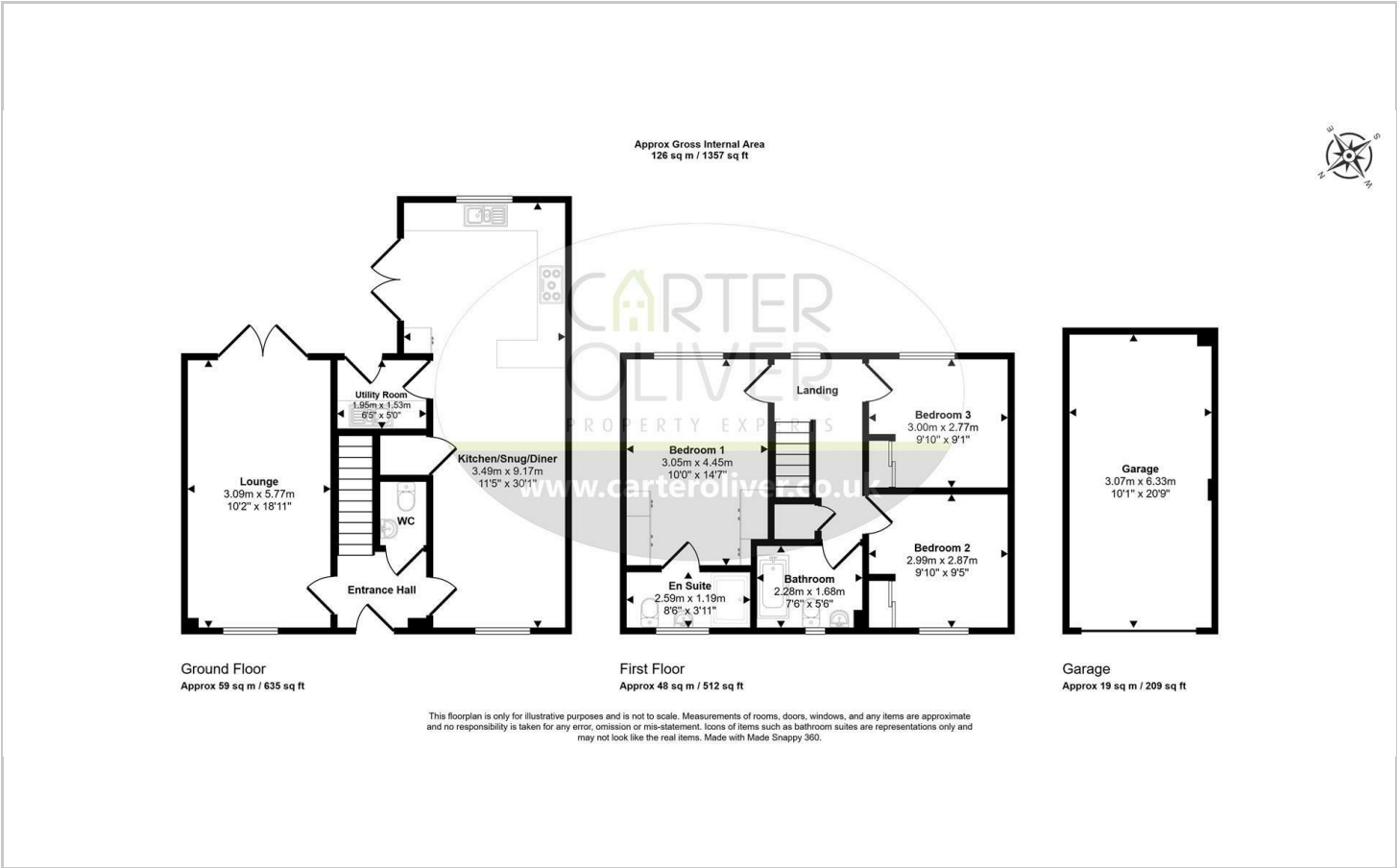


LARGE OPEN PLAN KITCHEN / DINING / SNUG - LARGE LOUNGE + UTILITY AND GROUND FLOOR WC





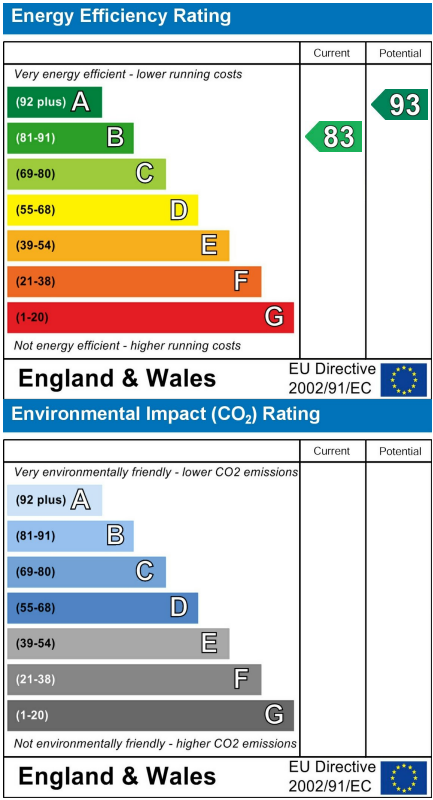
Floor Plan



Area Map



Energy Efficiency Graph



Viewing

Please contact our LUTTERWORTH Office on 01455 248033 if you wish to arrange a viewing appointment for this property or require further information.

These particulars, whilst believed to be accurate are set out as a general outline only for guidance and do not constitute any part of an offer or contract. Intending purchasers should not rely on them as statements of representation of fact, but must satisfy themselves by inspection or otherwise as to their accuracy. No person in this firm's employment has the authority to make or give any representation or warranty in respect of the property.