



2 Simons Close

Swinford, Lutterworth, LE17 6BU

Guide price £325,000

2 Simons Close



Description

Swinford is a picturesque village that offers a sense of community while being conveniently located for access to nearby amenities and transport links. This property presents an excellent opportunity for those looking to embrace a peaceful lifestyle in a modern home. Do not miss the chance to make this delightful house your own.

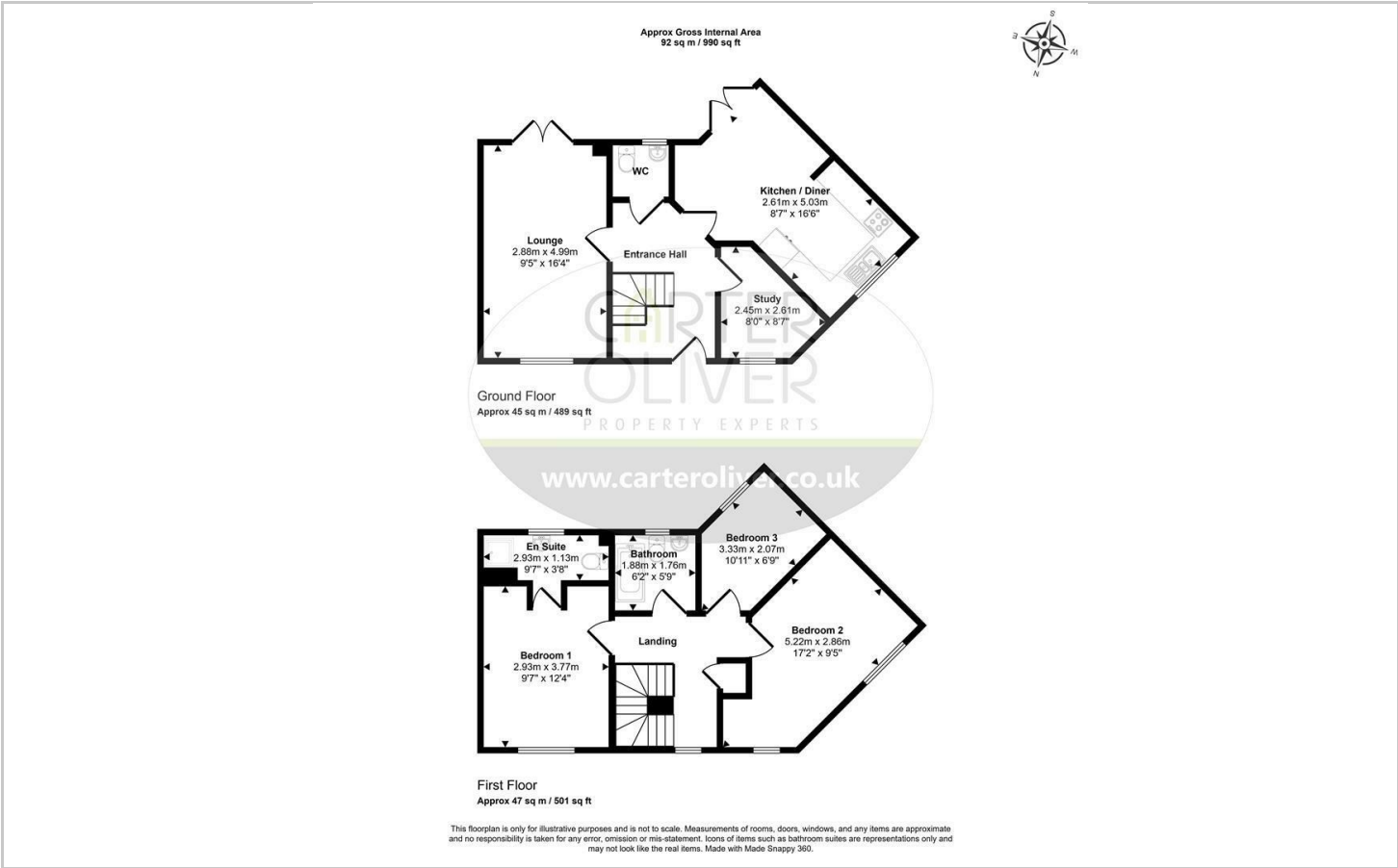
A front to back lounge to the left is light and spacious and the kitchen diner to the right both have access to the garden. There is an additional home office to the right. With a convenient ground floor WC and access to the first floor with a dog leg staircase. Too the first floor is a family bathroom and ensuite shower room to the Principal Bedroom, with 2 additional spacious bedrooms. Recently redecorated inside and out and fitted with new carpets throughout, this home is move in ready with NO CHAIN.

- 3 BEDROOM DETACHED HOME
- 2 RECEPTION ROOMS
- PRINCIPAL BEDROOM WITH EN-SUITE
- NEW CARPETS THROUGHOUT
- NO CHAIN
- SIDE BY SIDE PARKING ON PRIVATE DRIVE
- RECENTLY REDECORATED INSIDE AND OUT
- VILLAGE LOCATION
- COUNCIL TAX BAND - C & EPC - C
- ESTATE CHARGE £35.00 PER MONTH

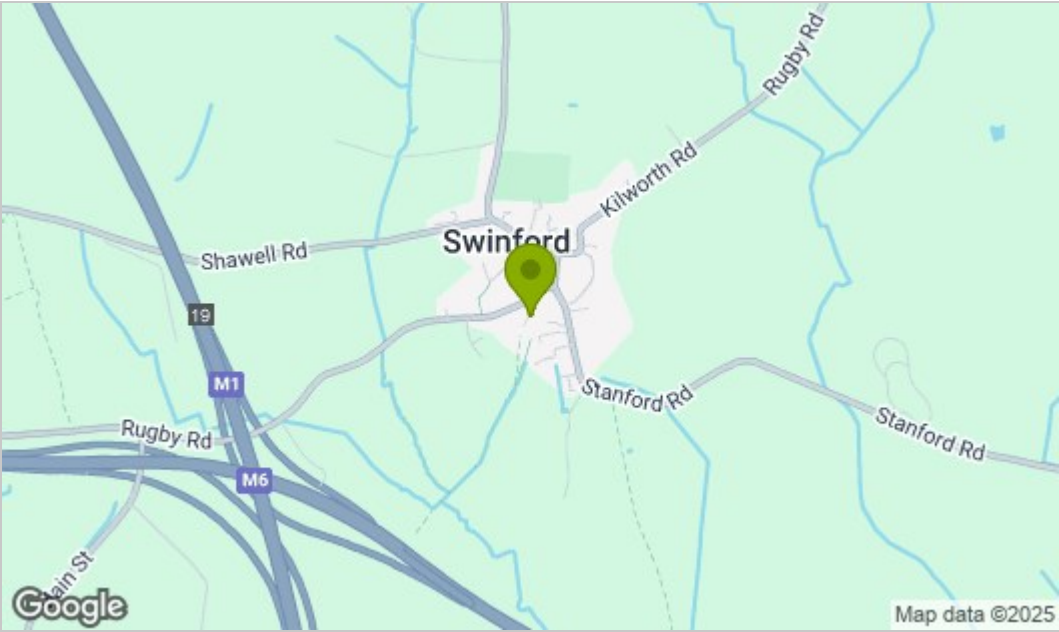




Floor Plan



Area Map



Viewing

Please contact our LUTTERWORTH Office on 01455 248033 if you wish to arrange a viewing appointment for this property or require further information.

These particulars, whilst believed to be accurate are set out as a general outline only for guidance and do not constitute any part of an offer or contract. Intending purchasers should not rely on them as statements of representation of fact, but must satisfy themselves by inspection or otherwise as to their accuracy. No person in this firms employment has the authority to make or give any representation or warranty in respect of the property.

Energy Efficiency Graph

