



5 Ashby Road

Gilmorton, Lutterworth, LE17 5LY

Guide price £425,000

2 RECEPTIONS PLUS BREAKFAST KITCHEN, UTILITY AND GROUND FLOOR WC



Description

This fabulously presented 3 bedroom detached cottage is sure to be popular, with a great mixture of country feels and modern essentials you find this home located right in the heart of the ever popular Gilmorton village. Just a short stroll to all of your local amenities this ticks all of the boxes. Downstairs you'll find your entrance space that leads into a dining/living area, to the left of which is your lounge with log burner. On the other side of the dining room you'll find the perfectly proportioned kitchen with breakfast bar that seats 3, as well as utility space and downstairs W/C. Upstairs you'll find your 3 double bedrooms, with built in storage in each. There is a large family bathroom with separate bath and shower with 2 heated towel rails. The newly fitted oak doors throughout look exceptional. Outside is a detached garage along with manageable garden space and parking for multiple vehicles. For more information on this property please give us a call on 01455 248 033 and we'll be happy to help.

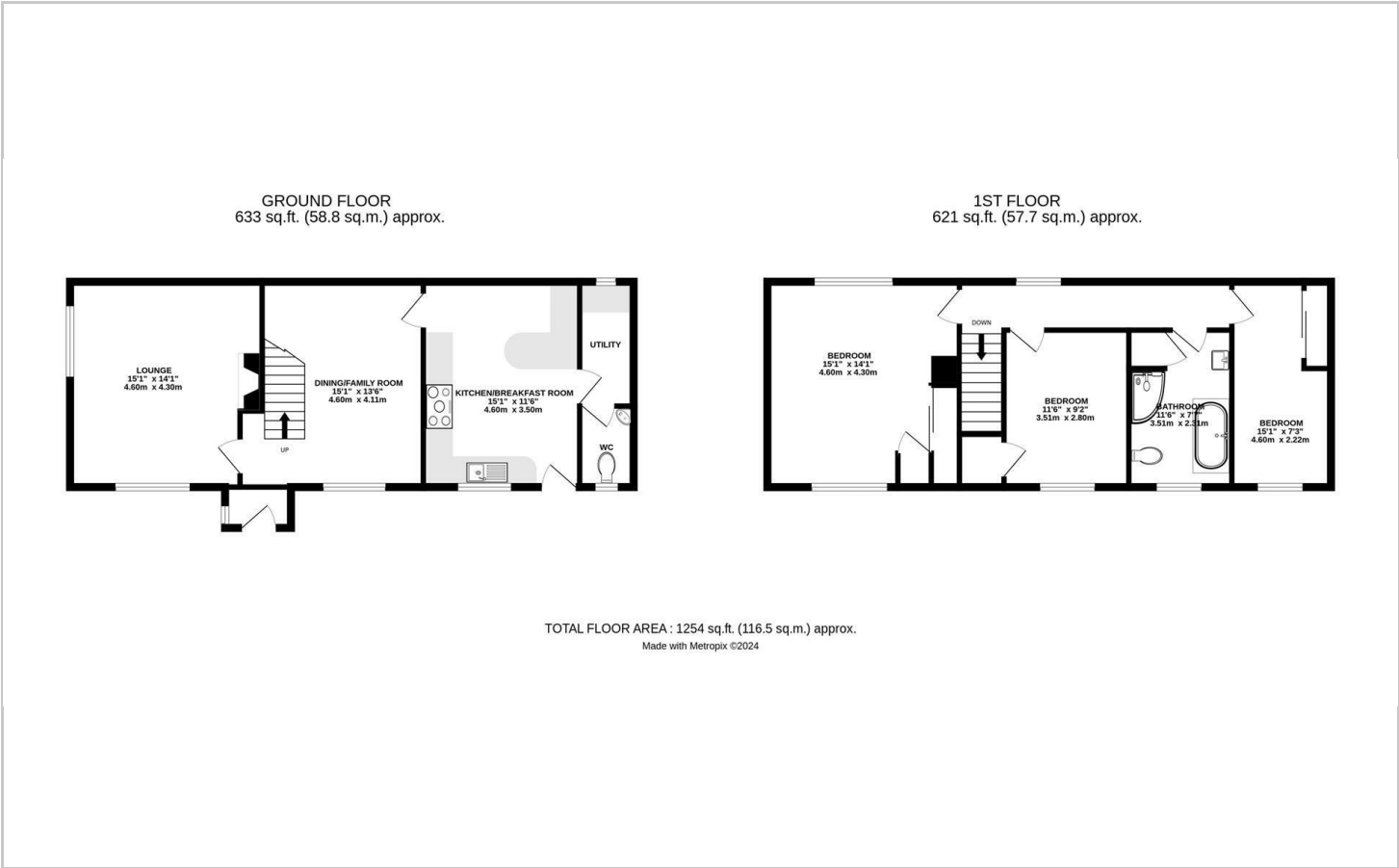
- PERFECT GILMORTON VILLAGE LOCATION
- 3 DOUBLE BEDROOMS
- DETACHED GARAGE
- MANAGABLE GARDEN
- EPC D / FREEHOLD
- GREAT LOCAL AMENITIES IN WALKING DISTANCE
- 2 RECEPTION ROOMS
- BATH AND SEPARATE SHOWER
- PARKING FOR 2/3 CARS
- COUNCIL TAX BAND - D



2 DOUBLE BEDROOMS, LUXURY FAMILY BATHROOM, LOFT BOARDED WITH PULL DOWN LADDER.



Floor Plan



Area Map



Viewing

Please contact our LUTTERWORTH Office on 01455 248033 if you wish to arrange a viewing appointment for this property or require further information.

These particulars, whilst believed to be accurate are set out as a general outline only for guidance and do not constitute any part of an offer or contract. Intending purchasers should not rely on them as statements of representation of fact, but must satisfy themselves by inspection or otherwise as to their accuracy. No person in this firms employment has the authority to make or give any representation or warranty in respect of the property.

Energy Efficiency Graph

