



6 Tealby Close

Gilmorton, Lutterworth, LE17 5PT

**£1,450**

# 6 Tealby Close



## Description

Welcome to Tealby Close, a charming property located in the picturesque village of Gilmorton, Lutterworth. This stunning detached house offers a perfect blend of space and comfort, ideal for a growing family or those who love to entertain.

As you step inside, you are greeted by not one, not two, but three inviting reception rooms, providing ample space for relaxation, social gatherings, or even a home office. The layout of this property is both practical and versatile, catering to all your lifestyle needs.

There will be a holding deposit of £334.61 to allow for the referencing to commence and will be put towards your first months rent upon passing your referencing. And the Refundable tenancy deposit will be £1673.07.

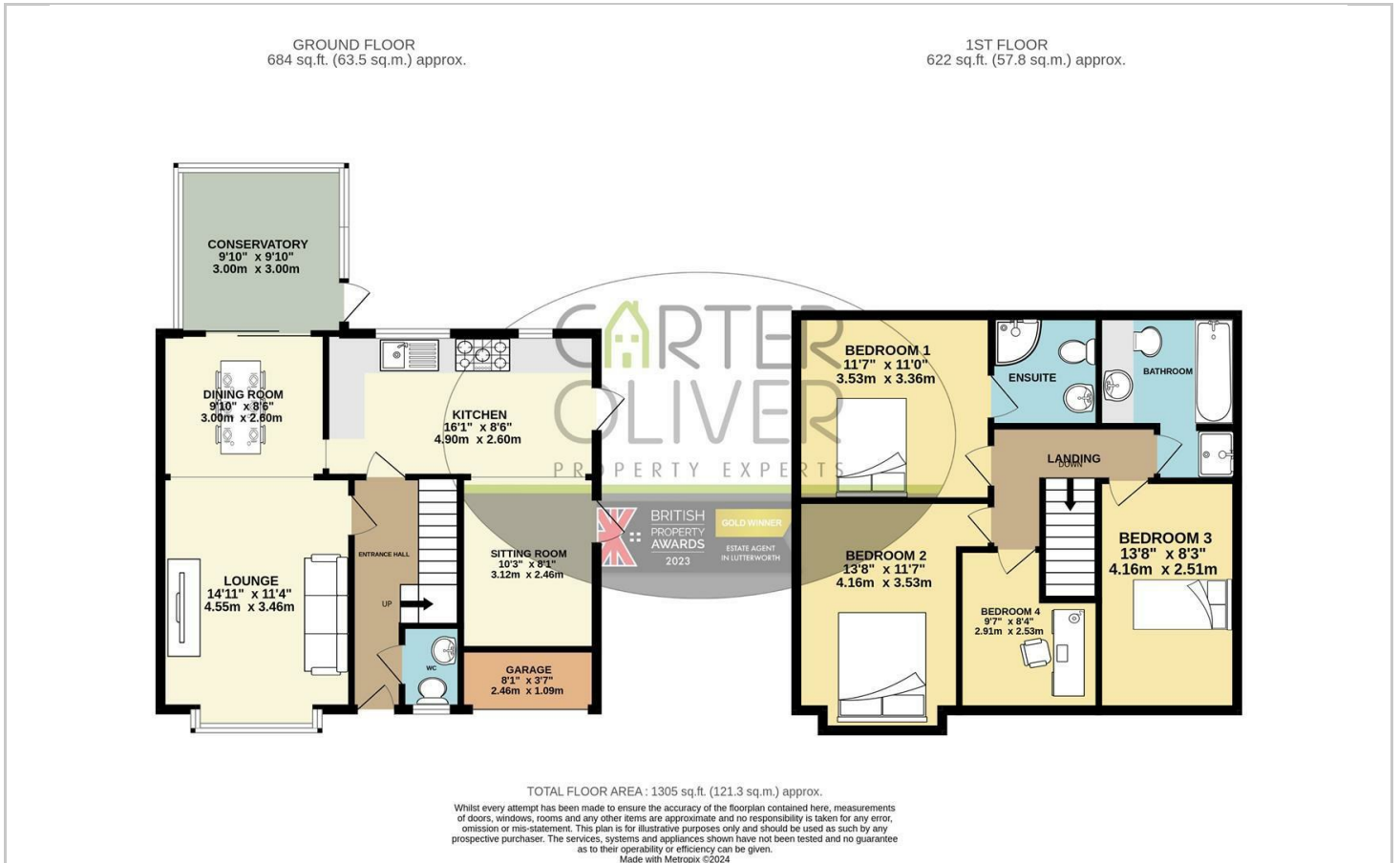
Don't miss out on the opportunity to make Tealby Close your new home. Book a viewing today and step into a world of comfort, style, and endless possibilities.

- Refundable tenancy deposit £1673.07.
- 4 Bedrooms
- West facing Garden
- Detached property
- Short walk to local Primary school
- Village
- Bathroom with separate shower and bath
- 3 Reception rooms
- Short drive to M1
- EPC - C / Council Tax Band - E

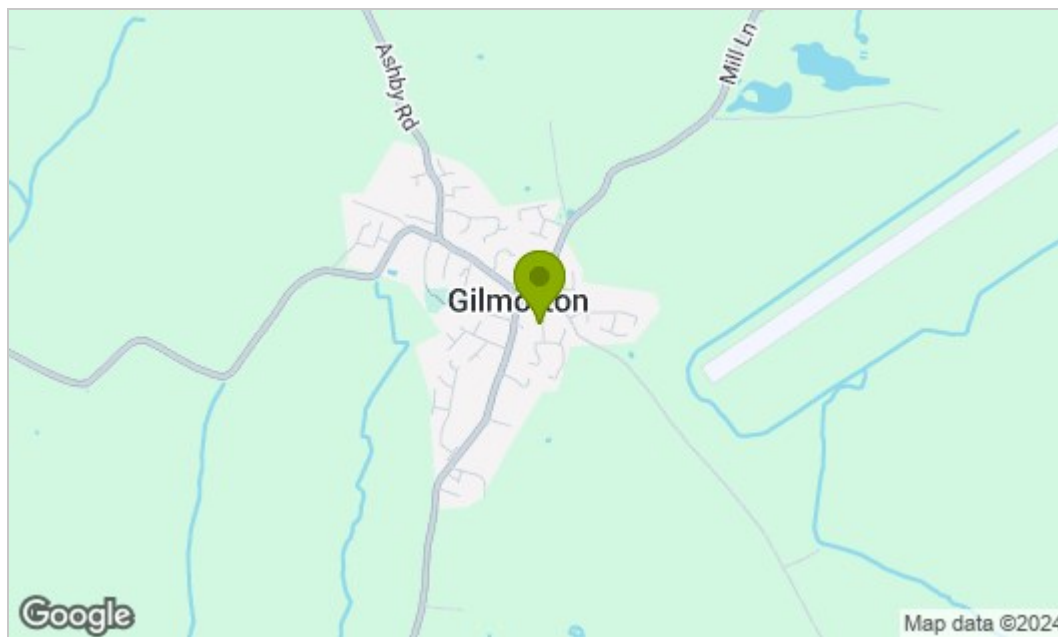




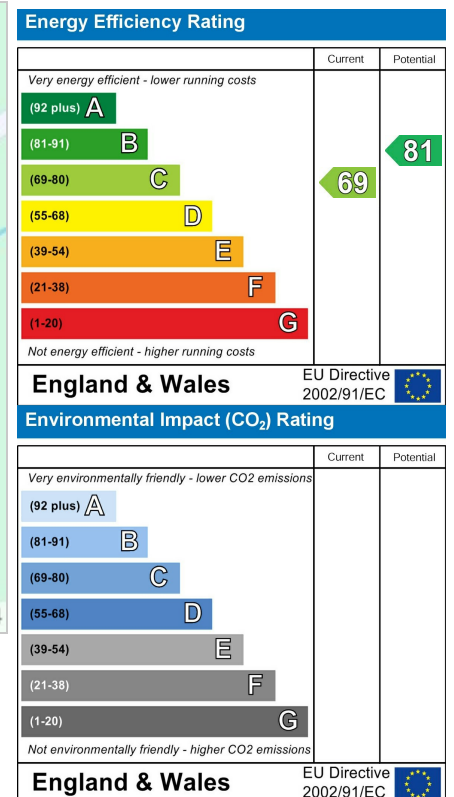
## Floor Plan



## Area Map



## Energy Efficiency Graph



## Viewing

Please contact our LUTTERWORTH Office on 01455 248033 if you wish to arrange a viewing appointment for this property or require further information.

These particulars, whilst believed to be accurate are set out as a general outline only for guidance and do not constitute any part of an offer or contract. Intending purchasers should not rely on them as statements of representation of fact, but must satisfy themselves by inspection or otherwise as to their accuracy. No person in this firm's employment has the authority to make or give any representation or warranty in respect of the property.