



16 Guthlaxton Avenue

, Lutterworth, LE17 4ET

£850 Per month

16 Guthlaxton Avenue

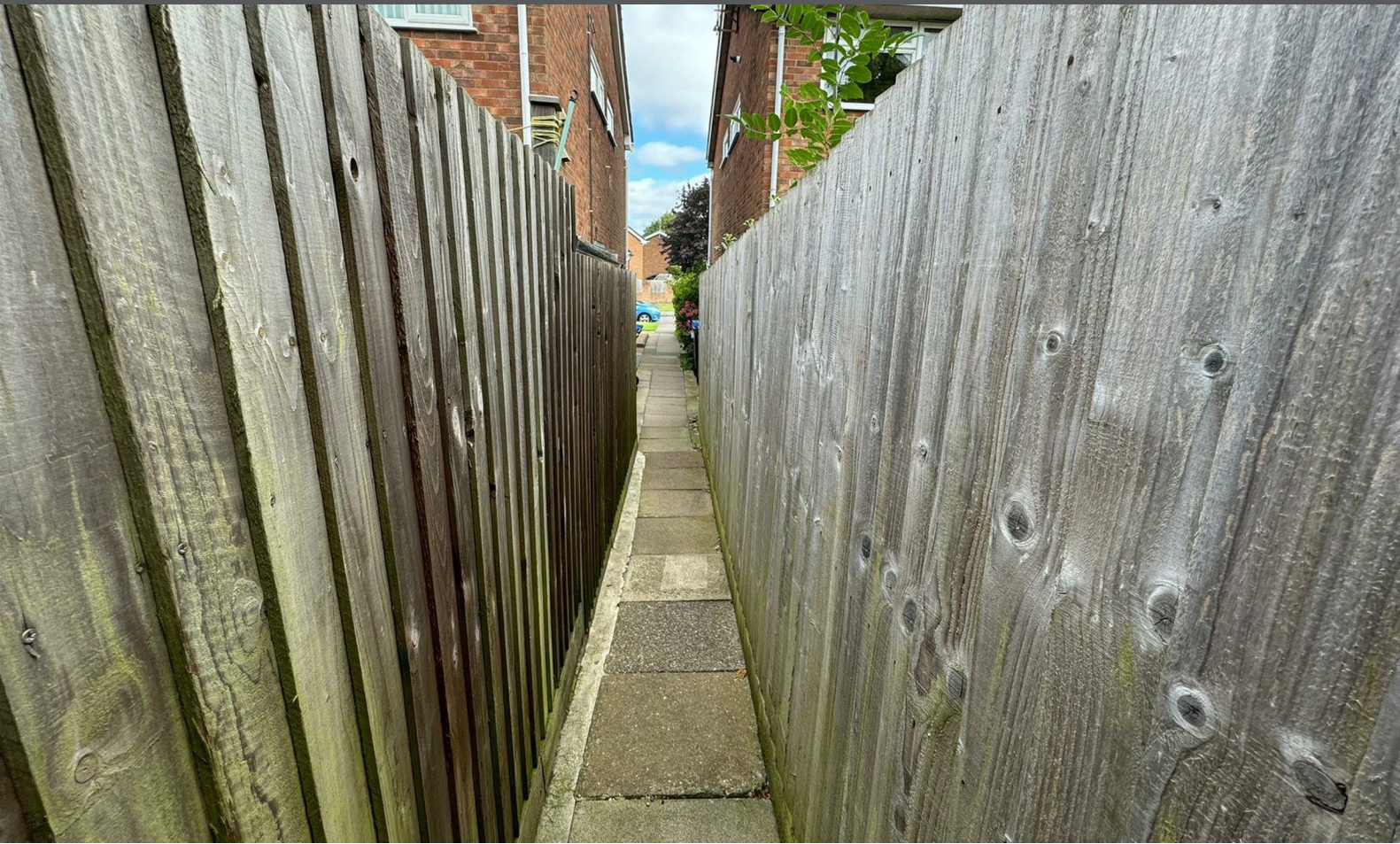


Description

This 2 BEDROOM 1st FLOOR MAISONETTE has its own PRIVATE REAR GARDEN AND GARAGE in a SEPARATE BLOCK - A LITTLE GEM in the HEART of LUTTERWORTH. Easy WALKING distance into LUTTERWORTH TOWN CENTRE with access to all AMENITIES including, PUBLIC TRANSPORT, SUPERMARKETS, PUBS, RESTAURANTS, CAFES, DOCTORS, DENTIST and a FABULOUS RANGE of LOCAL INDEPENDENT STORES.

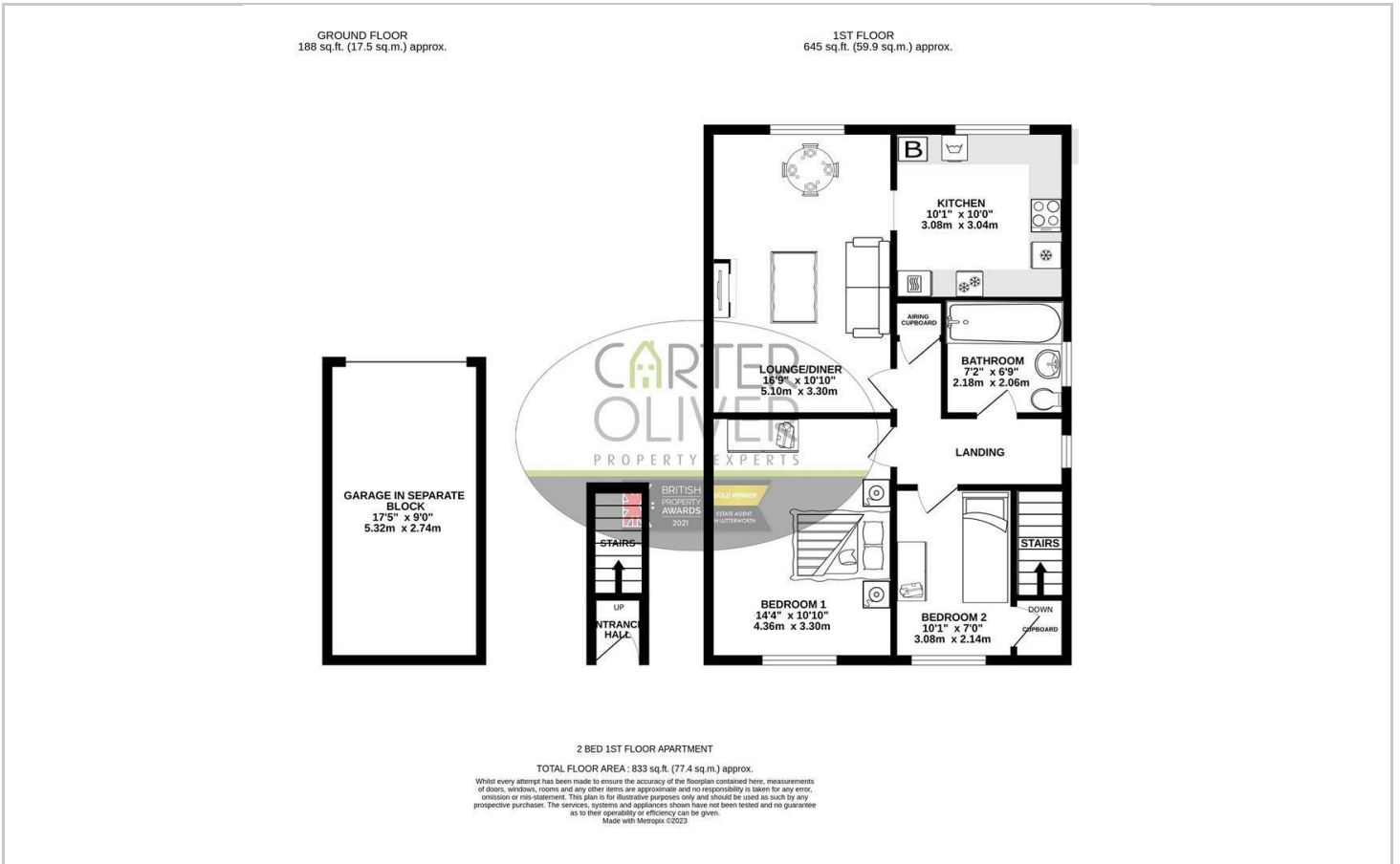
This property will need a refundable tenancy deposit of £980.76 And a 1 week holding deposit of £196.15.

- 1ST FLOOR MAISONETTE
- 2 GOOD BEDROOMS
- LARGE LOUNGE / DINER
- FITTED KITCHEN
- BATHROOM WITH SHOWER OVER BATH
- PRIVATE GARDEN / GARAGE IN BLOCK
- COUNCIL TAX BAND - A
- NO SERVICE CHARGE - EPC - C





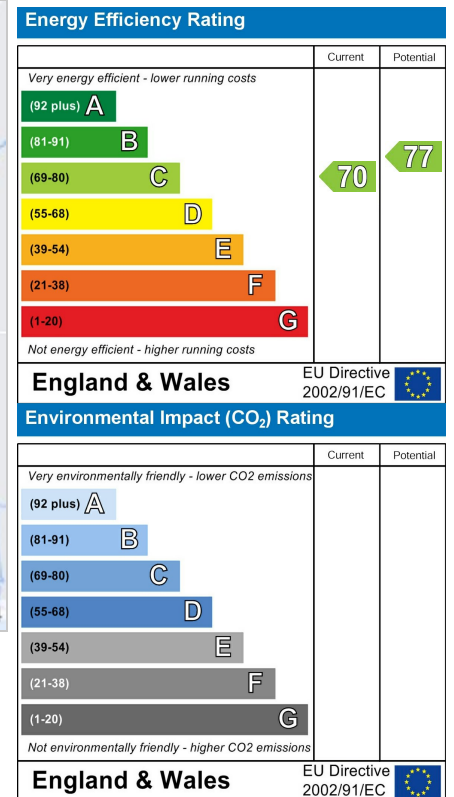
Floor Plan



Area Map



Energy Efficiency Graph



Viewing

Please contact our LUTTERWORTH Office on 01455 248033 if you wish to arrange a viewing appointment for this property or require further information.

These particulars, whilst believed to be accurate are set out as a general outline only for guidance and do not constitute any part of an offer or contract. Intending purchasers should not rely on them as statements of representation of fact, but must satisfy themselves by inspection or otherwise as to their accuracy. No person in this firm's employment has the authority to make or give any representation or warranty in respect of the property.