



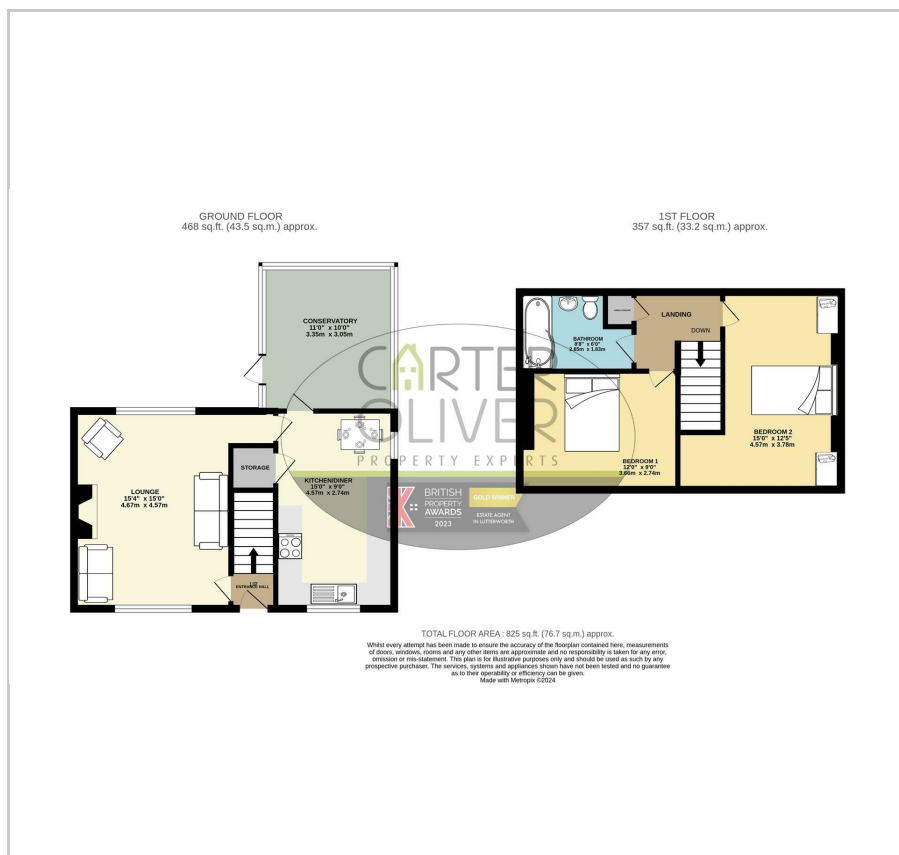
109 Leicester Road
, Lutterworth, LE17 4NN

Guide price £230,000

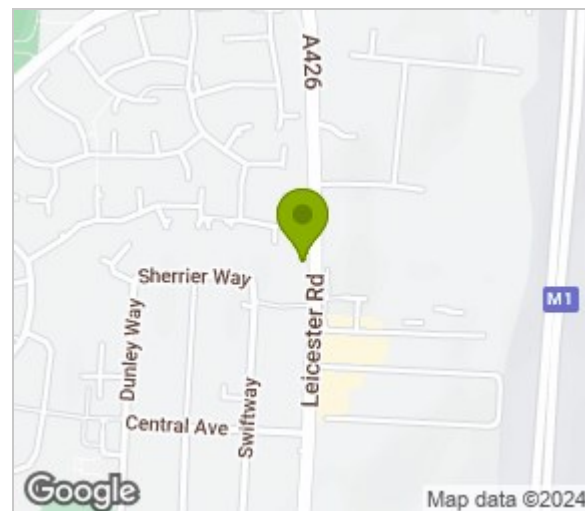


2 1 2

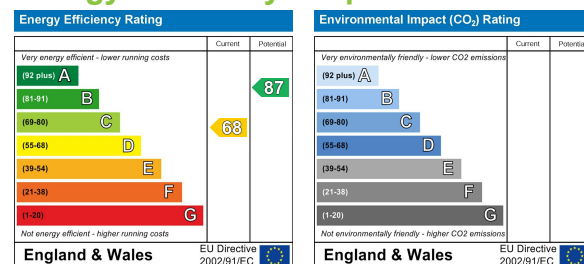
Floor Plan



Area Map



Energy Efficiency Graph



Viewing Please contact 01455 248033 / 01788 229434 if you wish to arrange a viewing appointment for this property or require further information.

- NO CHAIN - PARKING FOR 2/3 CARS ON DRIVE
- REFITTED KITCHEN
- BATHROOM WITH SHOWER OVER BATH
- CONSERVATORY
- FREEHOLD / EPC - D
- FIRST TIME BUYER / INVESTMENT OPPORTUNITY
- 2 DOUBLE BEDROOMS
- LOUNGE
- LARGE REAR GARDEN
- COUNCIL TAX - B

Welcome to Leicester Road, Lutterworth - a charming property that exudes character and potential! This semi-detached house, built in the 1930s/1950s, boasts two reception rooms, two cosy bedrooms, and a modern bathroom.

One of the standout features of this property is the ample parking space, making it convenient for you and your guests. The absence of a chain means a smoother buying process, allowing you to make this house your home without delay.

Recently refurbished, this house gleams with a fresh and inviting atmosphere, ready for you to move in and add your personal touch. The large garden offers a tranquil retreat where you can unwind and enjoy the outdoors.

Situated close to the M1 and A5, this property provides easy access to major road networks, perfect for commuters or those who love to explore the surrounding areas. Whether you're looking for a cozy home or a promising investment opportunity, this property ticks all the boxes.

Don't miss out on the chance to own this gem in Lutterworth - book a viewing today and envision the endless possibilities this property holds for you!

