

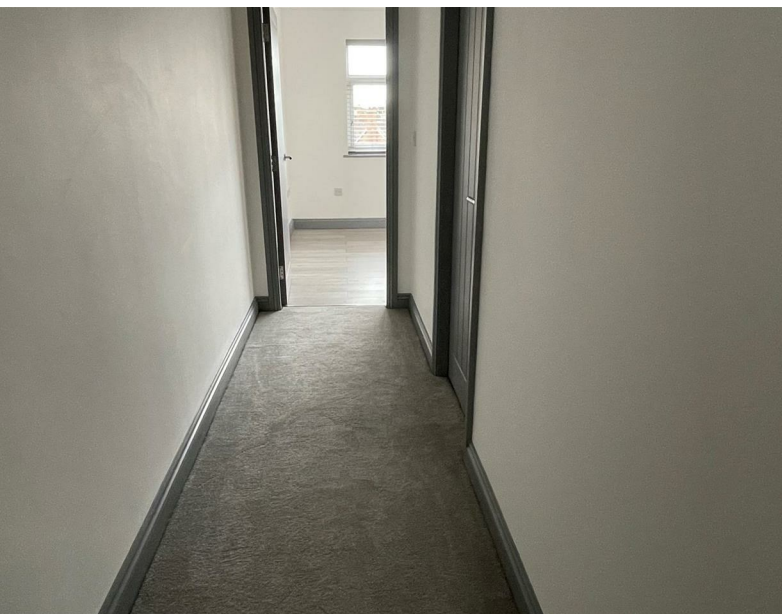


8A Bank Street

, Lutterworth, LE17 4AG

£625 Per month

8A Bank Street



Description

Welcome to this modern 1-bedroom apartment located on Bank Street in the picturesque town of Lutterworth. With its convenient location, this apartment offers great access to major transport links including the M1 and M6 motorways, Rugby train station, and Magna Park. Whether you're commuting to work or exploring the surrounding areas, you'll find getting around a breeze from this central location. Measuring at 272 sq ft, this apartment provides a comfortable living space that is easy to maintain. Perfect for a single professional, a couple, this apartment offers a modern and stylish living environment.

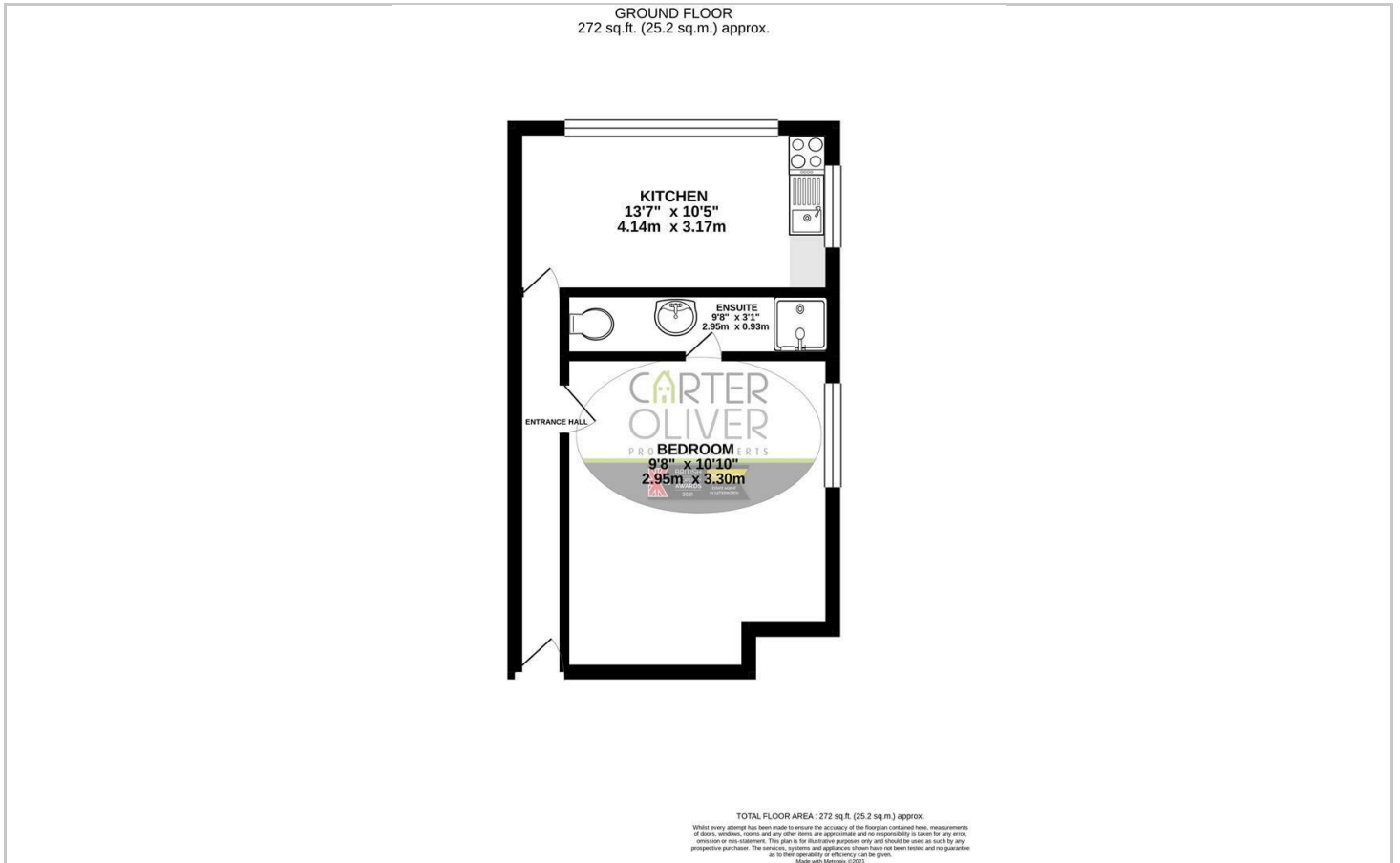
Rent will be £625pm and you will need to provide a 5 week holding deposit worth £721.15.

There will also be a £144.23 non refundable holding deposit which is equal to 1 weeks rent payable before referencing and will be put towards your first months rent if acceptable.

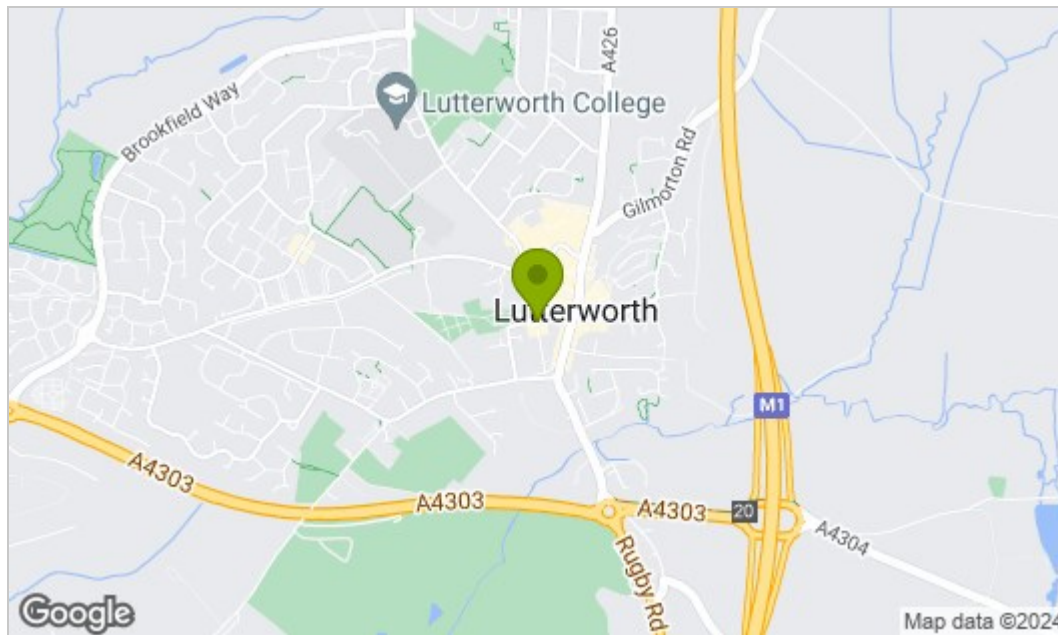
- Fully refurbished apartment
- Brand new appliances
- Town location
- AVAILABLE NOW.
- Open plan lounge/kitchen
- Bedroom with ensuite
- Street parking



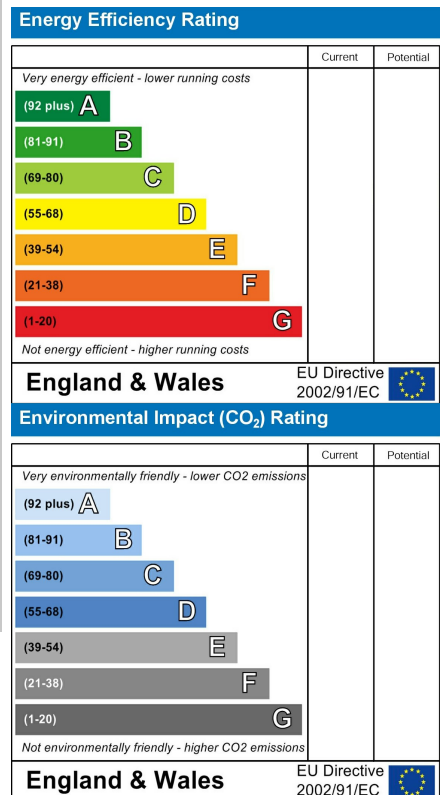
Floor Plan



Area Map



Energy Efficiency Graph



Viewing

Please contact our LUTTERWORTH Office on 01455 248033 if you wish to arrange a viewing appointment for this property or require further information.

These particulars, whilst believed to be accurate are set out as a general outline only for guidance and do not constitute any part of an offer or contract. Intending purchasers should not rely on them as statements of representation of fact, but must satisfy themselves by inspection or otherwise as to their accuracy. No person in this firm's employment has the authority to make or give any representation or warranty in respect of the property.