



Brambles Church Street

Churchover, Rugby, CV23 0EW

Guide price £360,000

FABULOUS DINING KITCHEN AND COSY LOUNGE WITH LOG BURNER



Description

"BRAMBLES" is a GORGEOUS COTTAGE in the WELL REGARDED VILLAGE of CHURCHOVER, within easy access to the MIDLANDS MOTORWAY network and RUGBY TRAIN STATION. PERFECT for COMMUTERS offering ACCESSIBILITY to TOWNS yet NESTLED IN THE HEART of WARWICKSHIRE COUNTRYSIDE. This 3 DOUBLE BEDROOM home has been TASTEFULLY REFURBISHED AND DECORATED ready for you to MOVE INTO. The DINING KITCHEN has been finished to a HIGH STANDARD with double doors leading out into the shared COURTYARD, which leads to a short walk down to YOUR FABULOUS LARGE REAR GARDEN which has AMAZING VIEWS across OPEN FIELDS, with the BONUS of a BBQ area with its own PIZZA OVEN and your very own CABIN BAR. The PERFECT RETREAT and ENTERTAINING AREA. Upstairs there are 2 DOUBLE BEDROOMS and a FAMILY BATHROOM with SEPARATE SHOWER CUBICLE and BATH on the 1ST FLOOR and then a STAIRCASE leading to the 2ND FLOOR and the 3RD DOUBLE BEDROOM. Watch our WALK AROUND VIDEO TOUR to appreciate those VIEWS.

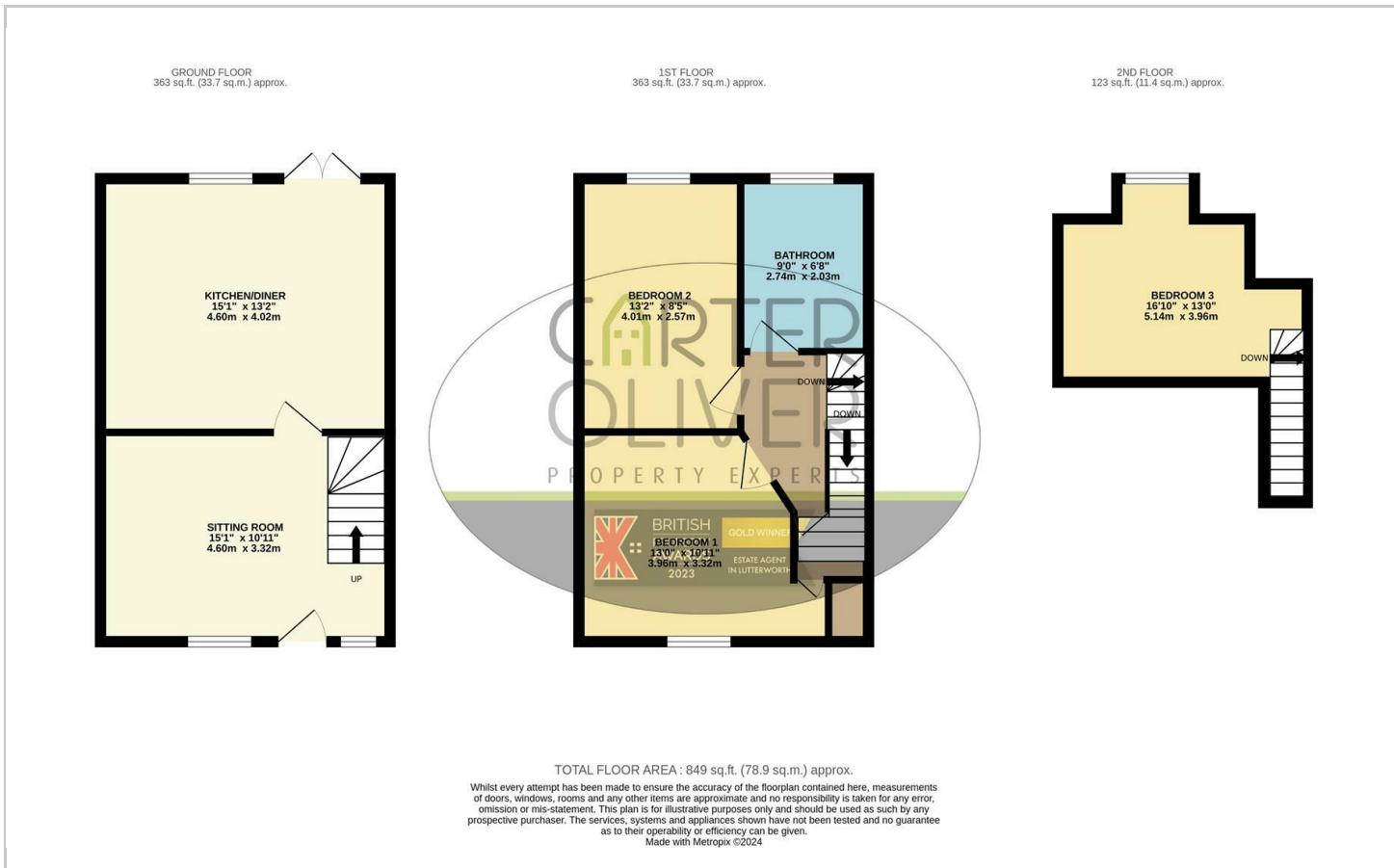
- GORGEOUS COTTAGE IN VILLAGE OF CHURCHOVER
- WATCH THE WALK AROUND VIDEO TOUR
- SITTING ROOM WITH LOG BURNING STOVE
- 3 DOUBLE BEDROOMS OVER 2 FLOORS
- NEW BOILER / FREEHOLD / EPC - E
- EASY ACCESS TO MOTORWAYS AND TRAIN STATION
- LARGE REAR GARDEN WITH AMAZING VIEWS
- GREAT SIZED DINING KITCHEN
- FAMILY BATHROOM TO FIRST FLOOR
- COUNCIL TAX BAND -B



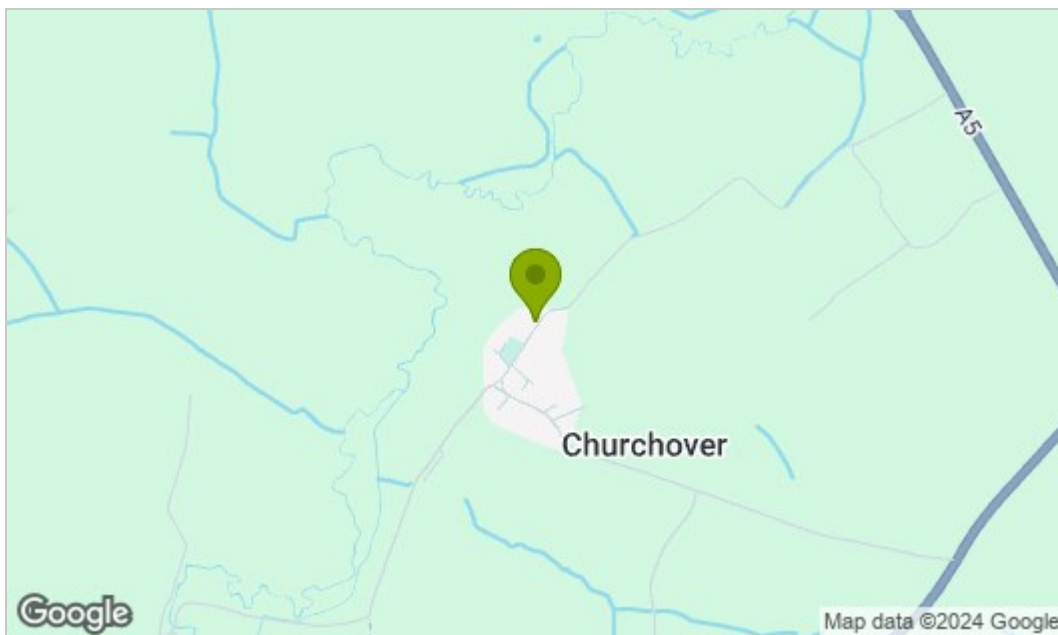
3 DOUBLE BEDROOMS AND A LARGE REAR GARDEN WITH PANORAMIC VIEWS



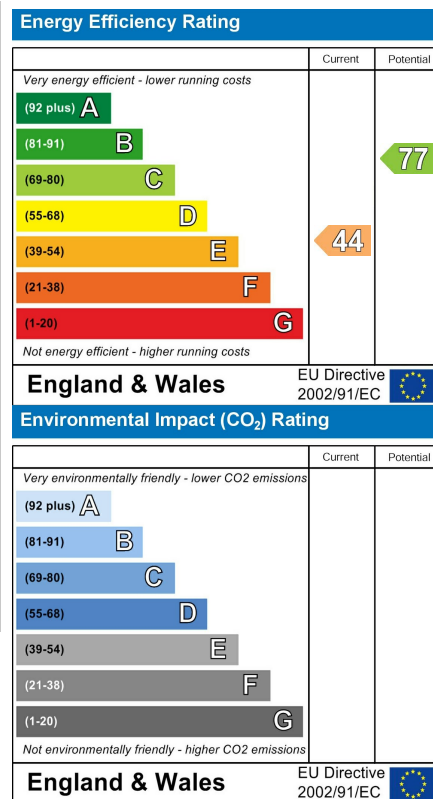
Floor Plan



Area Map



Energy Efficiency Graph



Viewing

Please contact our LUTTERWORTH Office on 01455 248033 if you wish to arrange a viewing appointment for this property or require further information.

These particulars, whilst believed to be accurate are set out as a general outline only for guidance and do not constitute any part of an offer or contract. Intending purchasers should not rely on them as statements of representation of fact, but must satisfy themselves by inspection or otherwise as to their accuracy. No person in this firm's employment has the authority to make or give any representation or warranty in respect of the property.