



21 Chandler Drive

Gilmorton, Lutterworth, LE17 5FS

Guide price £350,000

21 Chandler Drive



Description

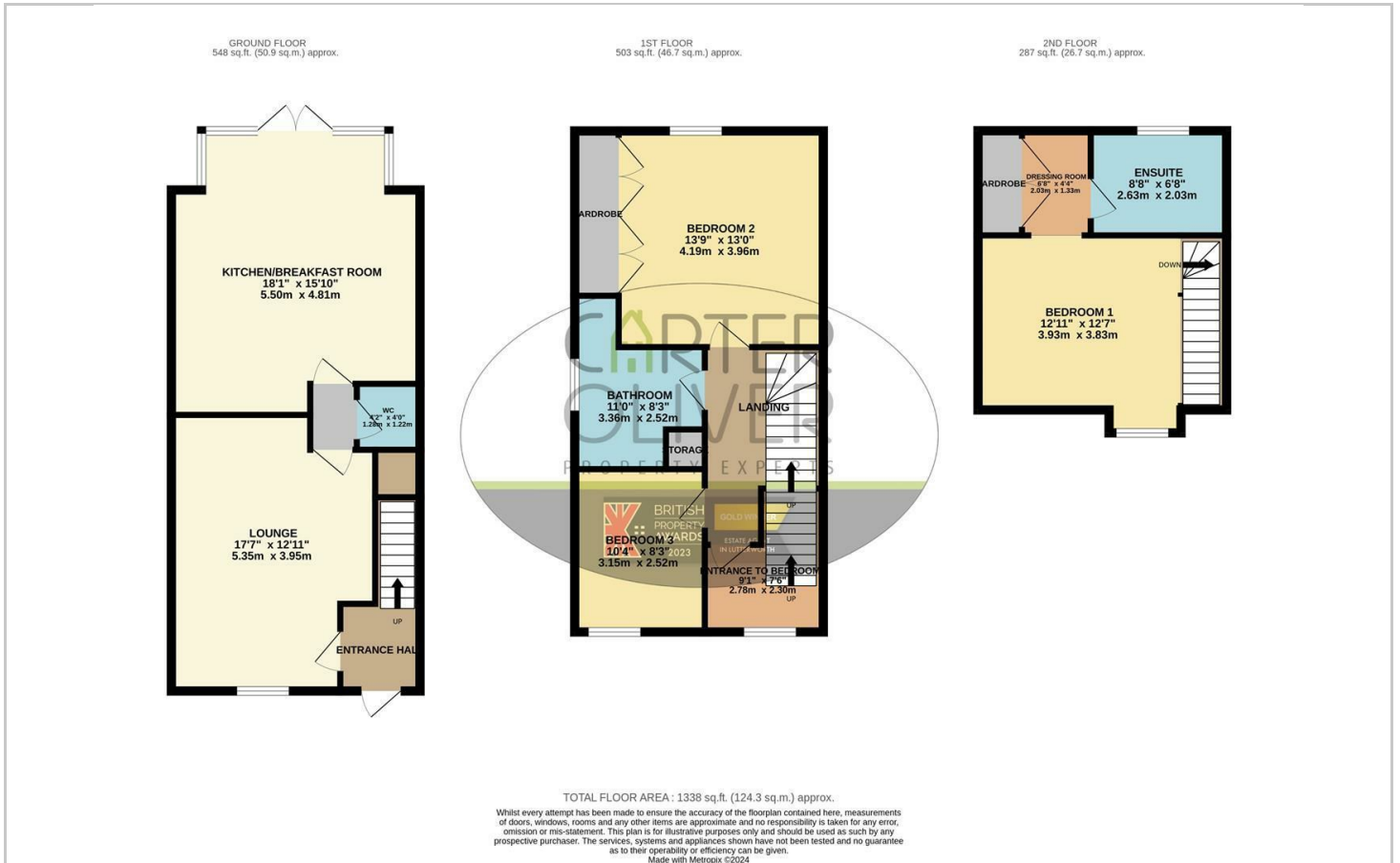
UNEXPECTEDLY BACK TO MARKET - An IMMACULATELY PRESENTED home in a QUIET CUL-DE-SAC in the VERY POPULAR VILLAGE of GILMORTON. Just a short walk from GIMORTON PRIMARY SCHOOL and MORTONS BISTRO. This 3 DOUBLE bedroom property has a PRINCIPAL SUITE on the 2nd floor with LARGE OPEN BEDROOM to a DRESSING AREA with BUILT IN WARDROBES and access to the ENSUITE SHOWER ROOM. To the First floor you will find 2 further DOUBLE BEDROOMS 1 also have BUILT IN WARDROBES. the ground floor is a great size with a LOUNGE to the front and FULLY FITTED DINING KITCHEN to the rear. Between these two rooms is the ground floor WC and FURTHER STORAGE that has been built to MATCH the KITCHEN UNITS. Outside and to the rear of the house is a PATIO area with a LAWN and FURTHER PATIO area which is situated to make the most of the OPEN VIEWS over FIELDS to the REAR. To the side of the house is a TANDEM DRIVEWAY for 2 CARS. This truly is a great home with flexible accommodation and ready to move into. £53.34 QUARTERLY ESTATE CHARGE.

- IMMACULATE SEMI DETACHED HOME
- 2 FURTHER DOUBLE BEDROOMS TO FIRST FLOOR
- GOOD SIZED - GROUND FLOOR WC
- ADDITIONAL STORAGE FITTED FROM NEW
- FREE HOLD - COUNCIL TAX BAND - D
- PRINCIPAL SUITE TO 2ND FLOOR WITH DRESSING ROOM & ENSUITE
- FAMILY BATHROOM WITH SEPARATE SHOWER AND BATH
- DINING KITCHEN TO REAR
- PARKING FOR 2 CARS
- EPC - B - ESTATE CHARGE - £53.34 QUARTERLY

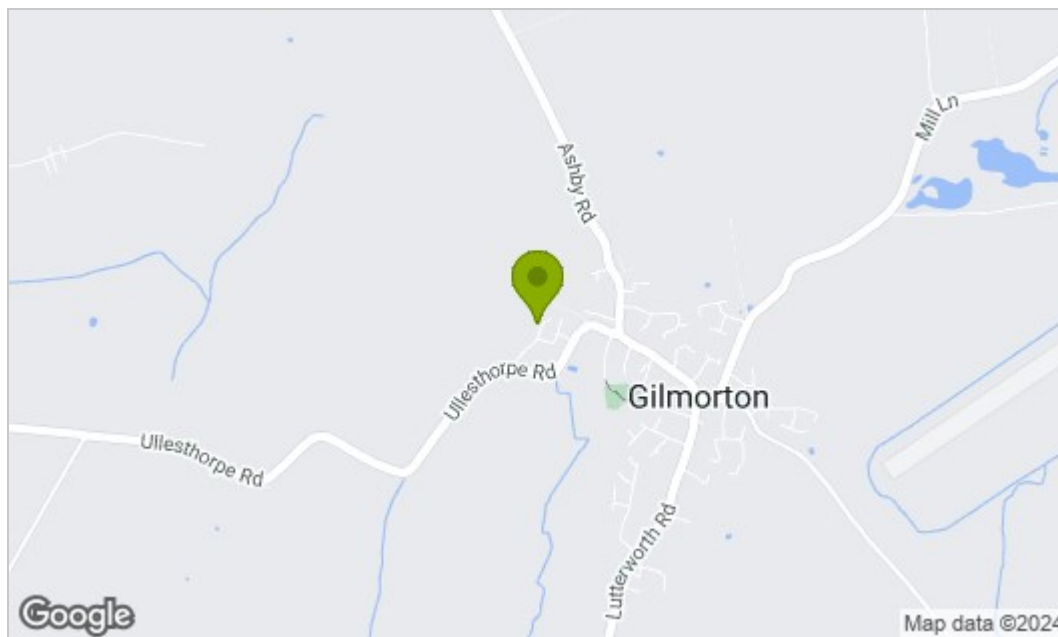




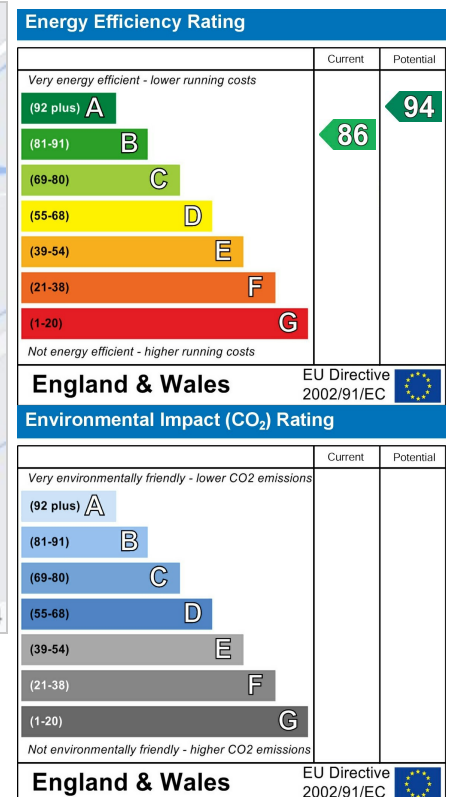
Floor Plan



Area Map



Energy Efficiency Graph



Viewing

Please contact our LUTTERWORTH Office on 01455 248033 if you wish to arrange a viewing appointment for this property or require further information.

These particulars, whilst believed to be accurate are set out as a general outline only for guidance and do not constitute any part of an offer or contract. Intending purchasers should not rely on them as statements of representation of fact, but must satisfy themselves by inspection or otherwise as to their accuracy. No person in this firm's employment has the authority to make or give any representation or warranty in respect of the property.