



44 Douglas Bader Drive

Lutterworth, LE17 4GT

Guide price £385,000

 4  3  3  B

2 RECEPTION ROOMS PLUS A LARGE CONSERVATORY



Description

NO CHAIN - Well presented four double bedroom detached home on the extremely sought after "Saxon Chase" development, boasts solar panels and a newly fitted boiler. Downstairs in the property you'll find a spacious lounge off the entrance hallway along with a WC, Utility room and kitchen, along with a separate dining room and large conservatory that leads to the private rear garden. Upstairs you'll find your 4 bedrooms with a large Principal with fitted double wardrobes and en-suite, the second bedroom also boasts a fitted double wardrobe. You have nicely sized bedrooms three and four and a family bathroom with shower over the bath. To the rear garden you'll find a large shed space to the right hand side of the property as well as a landscaped rear garden with seating areas and access to the left hand side of the property. The convenience of no upward chain is definitely worth a viewing.

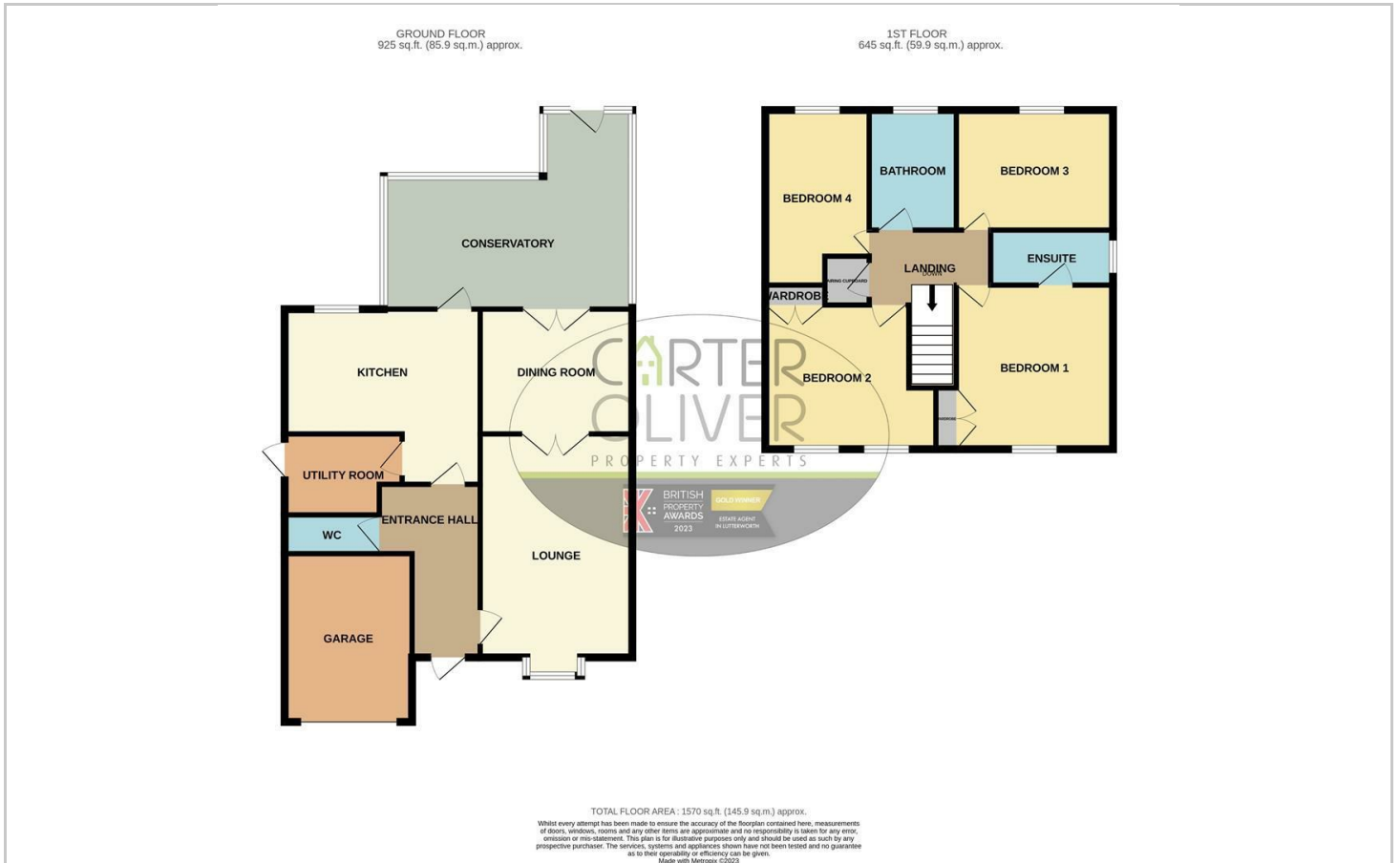
- SOLAR PANELS - CHEAPER ELECTRICITY
- PRINCIPAL BEDROOM + ENSUITE
- INTEGRAL GARAGE
- NEW BOILER
- COUNCIL TAX BAND E
- SPACIOUS DRIVEWAY - 2 SIDE BY SIDE
- 3 RECEPTION ROOMS
- PRIVATE REAR GARDEN
- EPC - B
- FREEHOLD



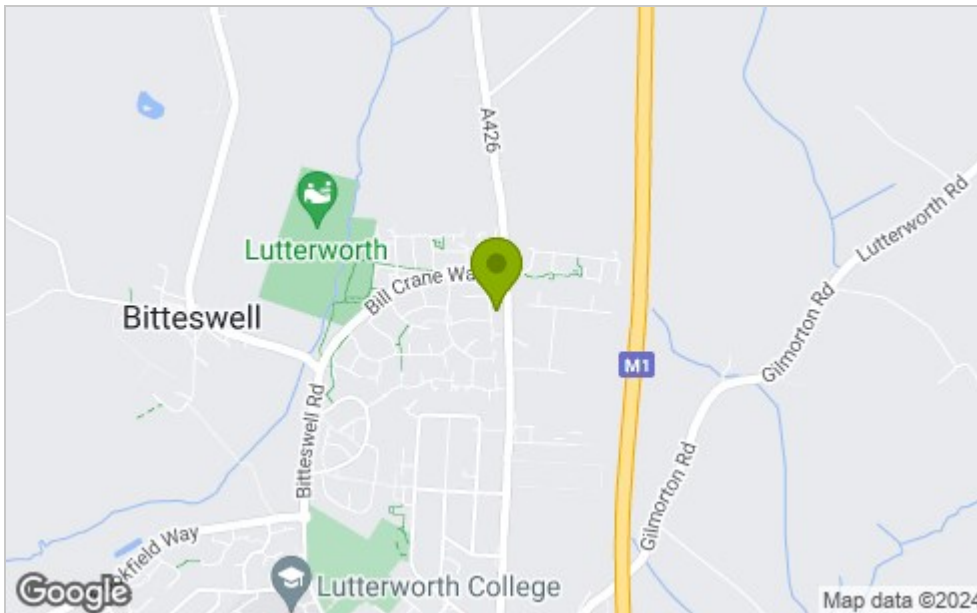
LOVELY LANDSCAPED REAR GARDEN



Floor Plan



Area Map



Viewing

Please contact our LUTTERWORTH Office on 01455 248033 if you wish to arrange a viewing appointment for this property or require further information.

These particulars, whilst believed to be accurate are set out as a general outline only for guidance and do not constitute any part of an offer or contract. Intending purchasers should not rely on them as statements of representation of fact, but must satisfy themselves by inspection or otherwise as to their accuracy. No person in this firm's employment has the authority to make or give any representation or warranty in respect of the property.

Energy Efficiency Graph

