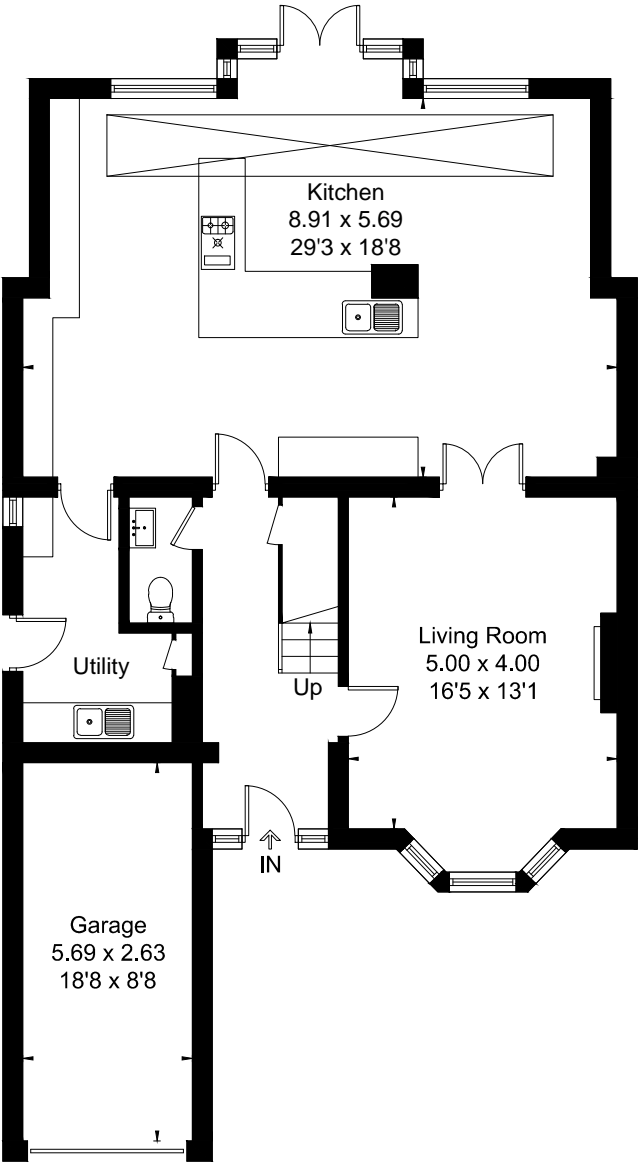
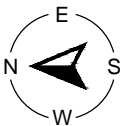
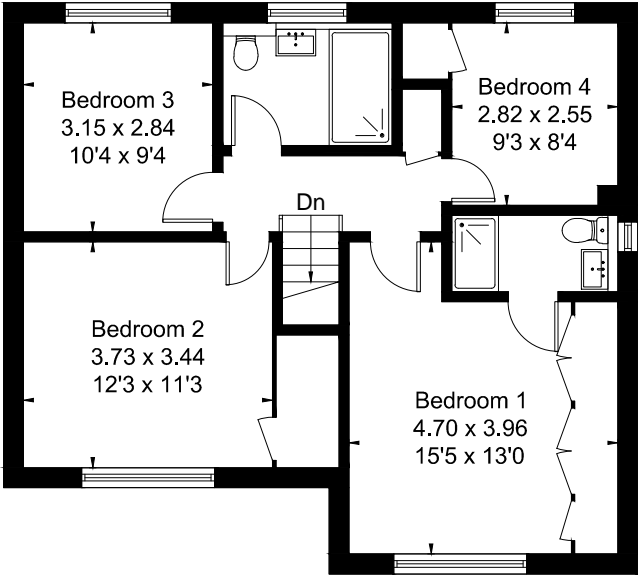


Approximate Floor Area = 160.7 sq m / 1730 sq ft  
Garage = 14.5 sq m / 156 sq ft  
Total = 175.2 sq m / 1886 sq ft



Ground Floor



First Floor



This floor plan has been drawn in accordance with RICS Property Measurement 2nd edition.  
All measurements, including the floor area, are approximate and for illustrative purposes only. @fourwalls-group.com #99027