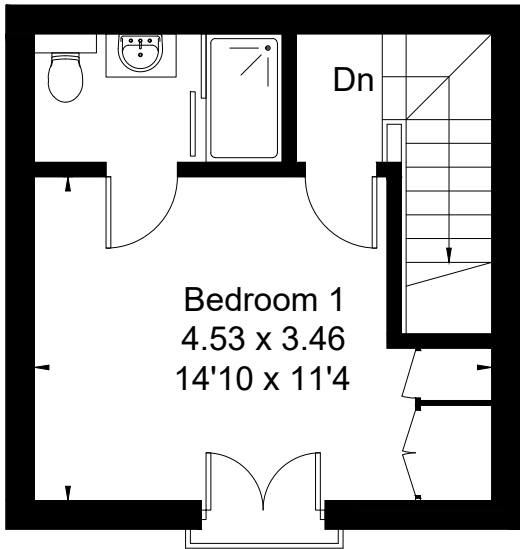
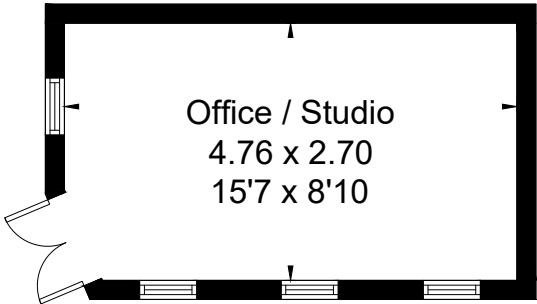


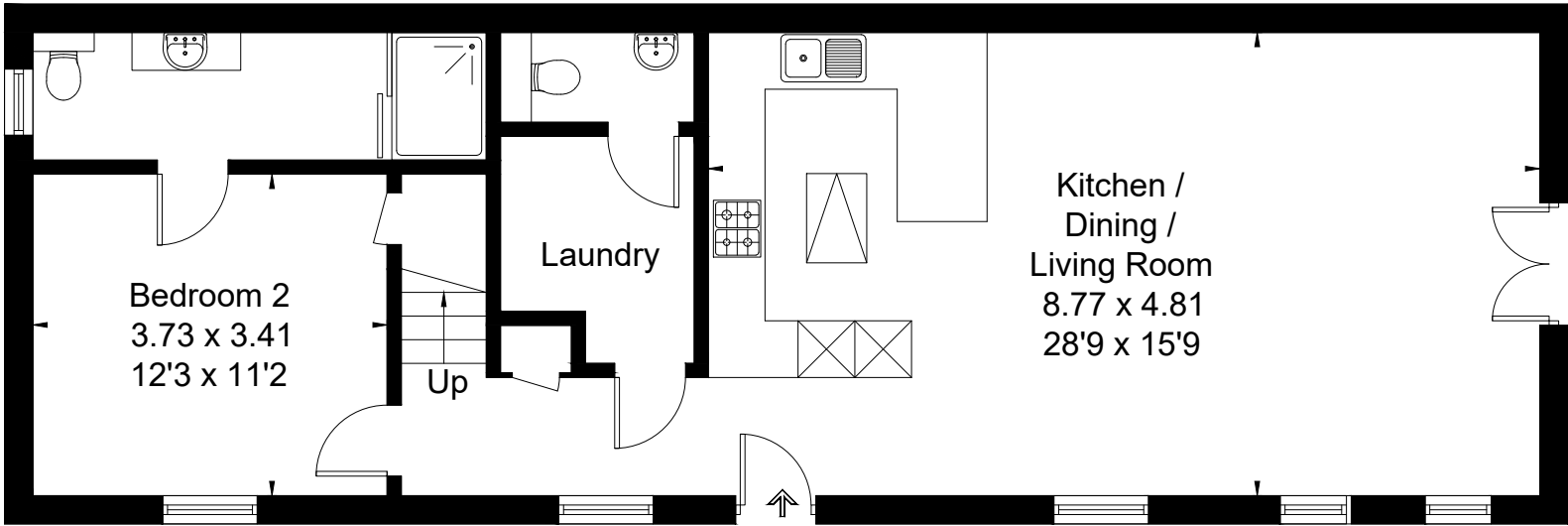
Approximate Floor Area = 102 sq m / 1098 sq ft
Outbuilding = 12.6 sq m / 136 sq ft
Total = 114.6 sq m / 1234 sq ft



First Floor



(Not Shown In Actual Location / Orientation)



Ground Floor



This floor plan has been drawn in accordance with RICS Property Measurement 2nd edition.
All measurements, including the floor area, are approximate and for illustrative purposes only. @fourwalls-group.com #98348