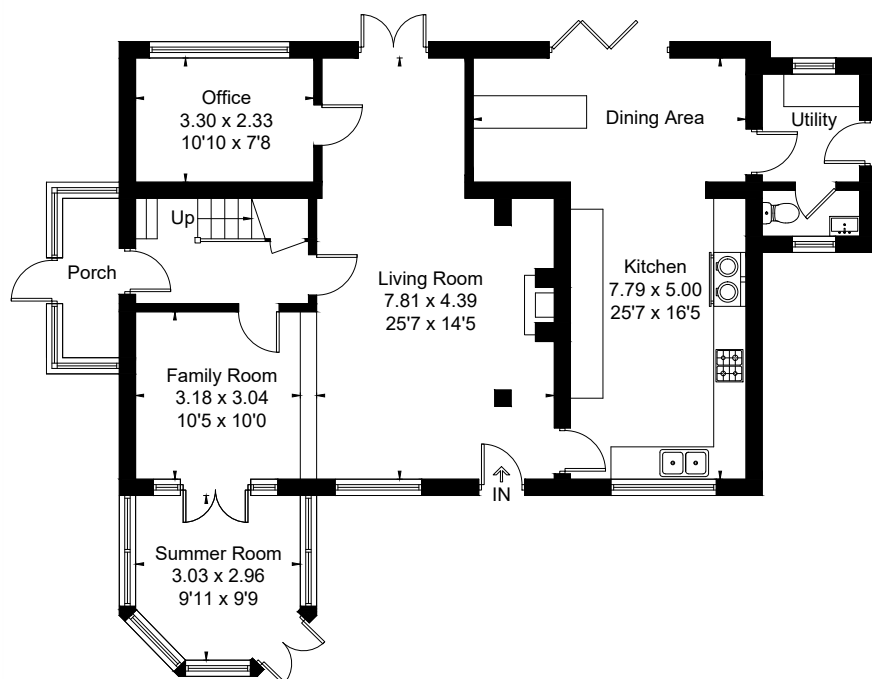


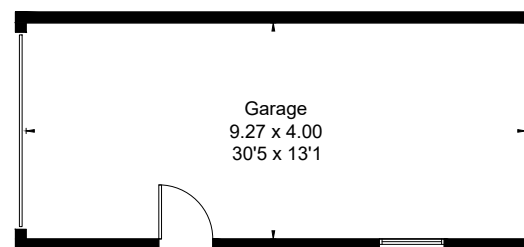
Approximate Floor Area = 199.5 sq m / 2147 sq ft  
 Outbuildings = 47.1 sq m / 507 sq ft  
 Total = 246.6 sq m / 2654 sq ft



[ ] = Reduced head height below 1.5m



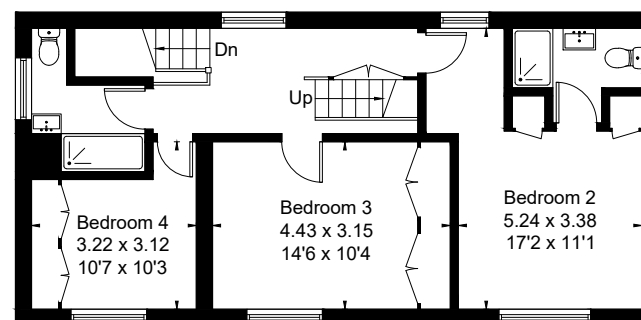
Ground Floor



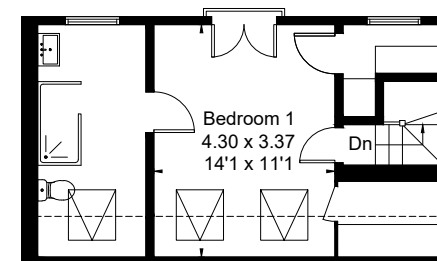
(Not Shown In Actual Location / Orientation)



(Not Shown In Actual Location / Orientation)



First Floor



Second Floor



This floor plan has been drawn in accordance with RICS Property Measurement 2nd edition.

All measurements, including the floor area, are approximate and for illustrative purposes only. @fourwalls-group.com #97761