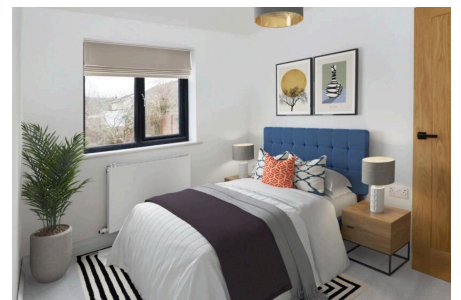
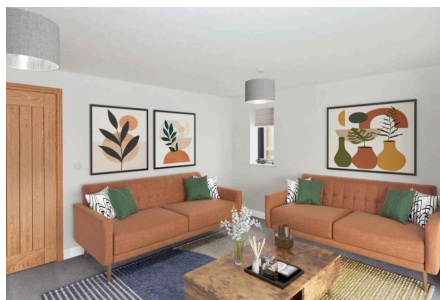
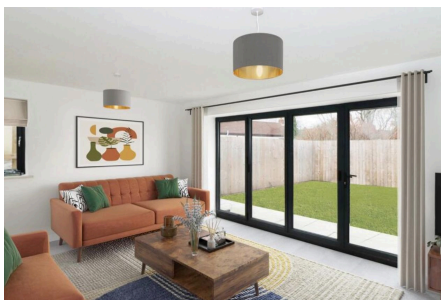


Fir Tree Lane, St George, BS5

Guide Price £450,000

3 1 1

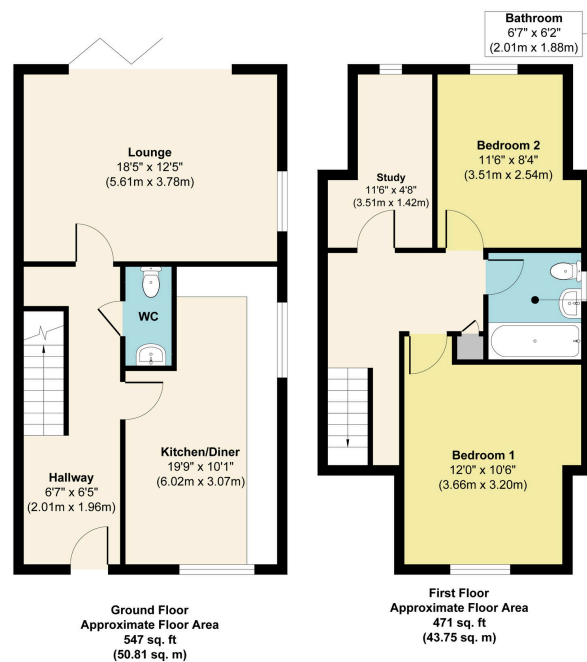


Lambert Way is an exciting new build development of only four high spec family homes located in an elevated position in the ever popular suburb of St George. The development consists of 2 semi detached three storey town houses and 2 semi detached 2 storey houses all finished to a high standard throughout with integral appliances, bi fold doors, solar panels to the roof, air source heat pumps and EV charging points.

145-147 East Street, Bedminster, Bristol, BS3 4EJ

Key Features

- Two Design Types
- Close To Local Amenities
- Luxury Bathrooms
- Bi Fold Doors To Rear Gardens
- High Spec Finish Throughout
- Parking
- EV Charging Points, Air Source Heat Pumps, Solar Panels,
- Kitchens With Integral Appliances
- Sought After Mature Setting
- Stunning New Build Family Homes



Approx. Gross Internal Floor Area 1018 sq. ft / 94.56 sq. m

Illustration for identification purposes only, measurements are approximate, not to scale.
Produced by Elements Property