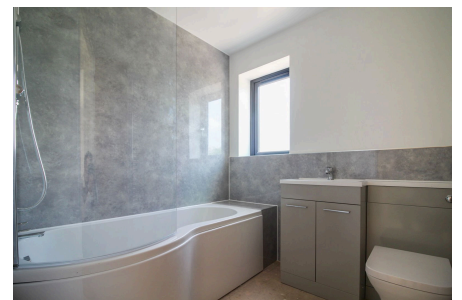
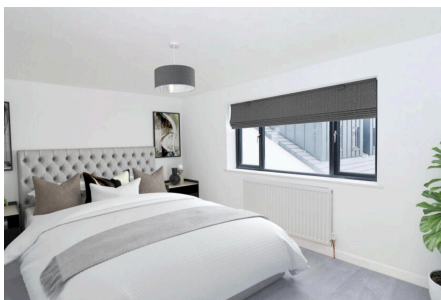


## Fir Tree Lane, Bristol, BS5

£495,000

3 2 1

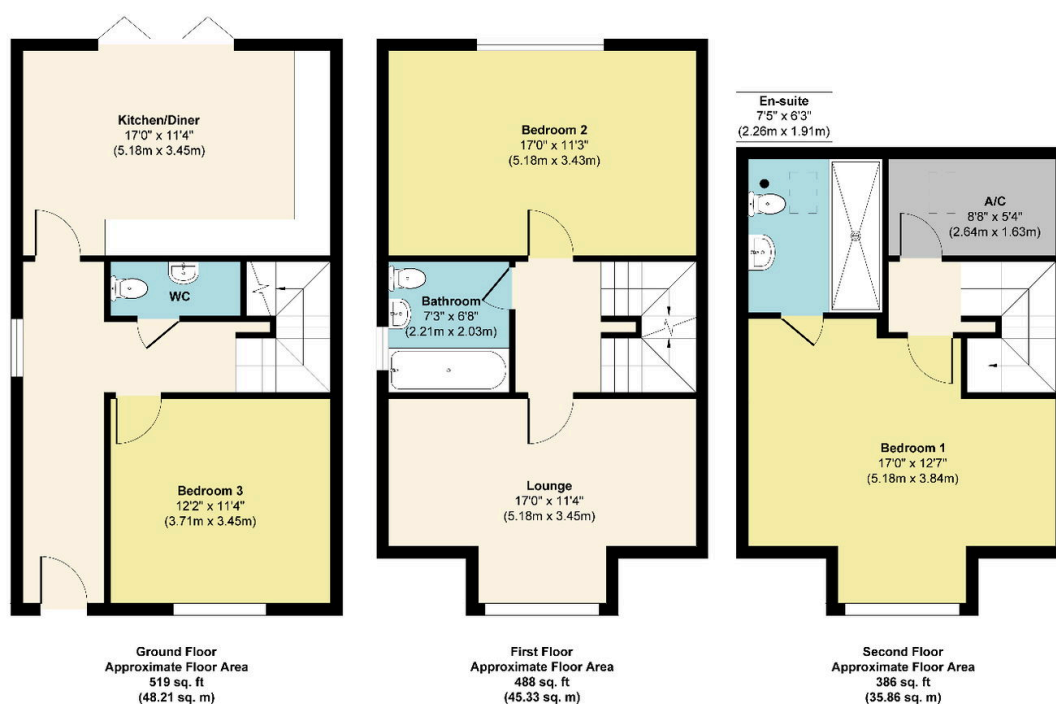


Lambert Way is an exciting new build development of only four high spec family homes located in an elevated position in the ever popular suburb of St George. The development consists of 2 semi detached three storey town houses and 2 semi detached 2 storey houses all finished to a high standard throughout with integral appliances, bi fold doors in the kitchen diner, solar panels to the roof with additional battery storage, air source heat pumps and EV charging points

145-147 East Street, Bedminster, Bristol, BS3 4EJ

## Key Features

- New Build Home
- High Spec Townhouses
- Rear Gardens
- Solar Panels
- 10 Year Build Zone Warranty
- Three Bedrooms
- Off Street Parking
- EV Chargers
- Air Source Heat Pumps
- City Views



**Approx. Gross Internal Floor Area 1393 sq. ft / 129.40 sq. m**

Illustration for identification purposes only, measurements are approximate, not to scale.

Produced by Elements Property

145-147 East Street, Bedminster, Bristol, BS3 4EJ