

Friezewood Road, Ashton, Bristol, BS3

£475,000

2 1 2

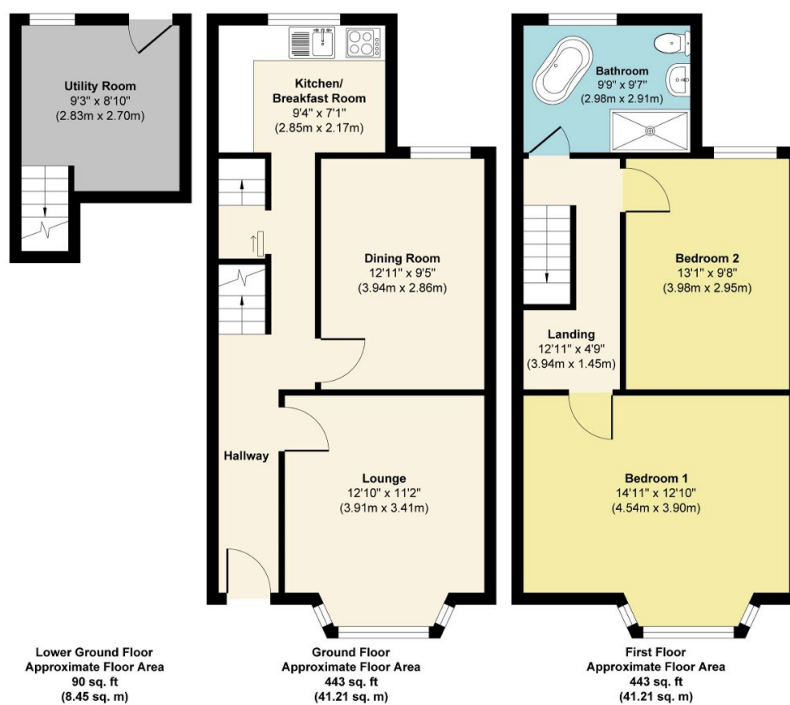


A two bedroom Victorian terraced home well presented throughout, located in the sought after area of Ashton. Located only seconds from North Street, which boasts a variety of independent shops and eateries. Also, only a short walk to nearby Greville Smyth Park and within easy access of The City Centre. Benefits include owned solar panels and a south facing garden with rear access. The property also features an entrance hall, lounge, dining room, kitchen/breakfast area, utility room, two bedrooms upstairs and an impressive four piece bathroom suite with a free standing bath. Perfect if you're a first time buyer or family! Viewings are highly recommended to appreciate all this property has to offer.

145-147 East Street, Bedminster, Bristol, BS3 4EJ

Key Features

- Two Bedrooms
- Two Reception Rooms
- Utility Room
- South Facing Garden
- Seconds From North Street
- Victorian Terraced Home
- Kitchen/Breakfast Area
- Four Piece Bathroom Suite
- Rear Access
- Easy Access To City Centre



Approx. Gross Internal Floor Area 976 sq. ft / 90.87 sq. m

Illustration for identification purposes only, measurements are approximate, not to scale.

Produced by Elements Property

145-147 East Street, Bedminster, Bristol, BS3 4EJ