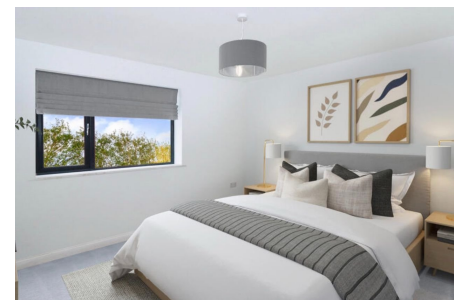
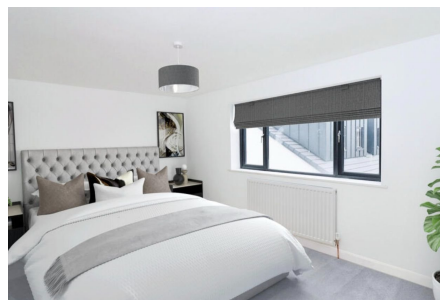
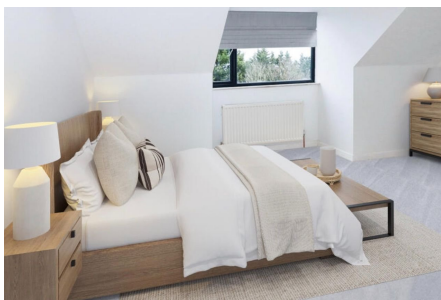


## Fir Tree Lane, Bristol, BS5

Guide Price £525,000

3 2 1

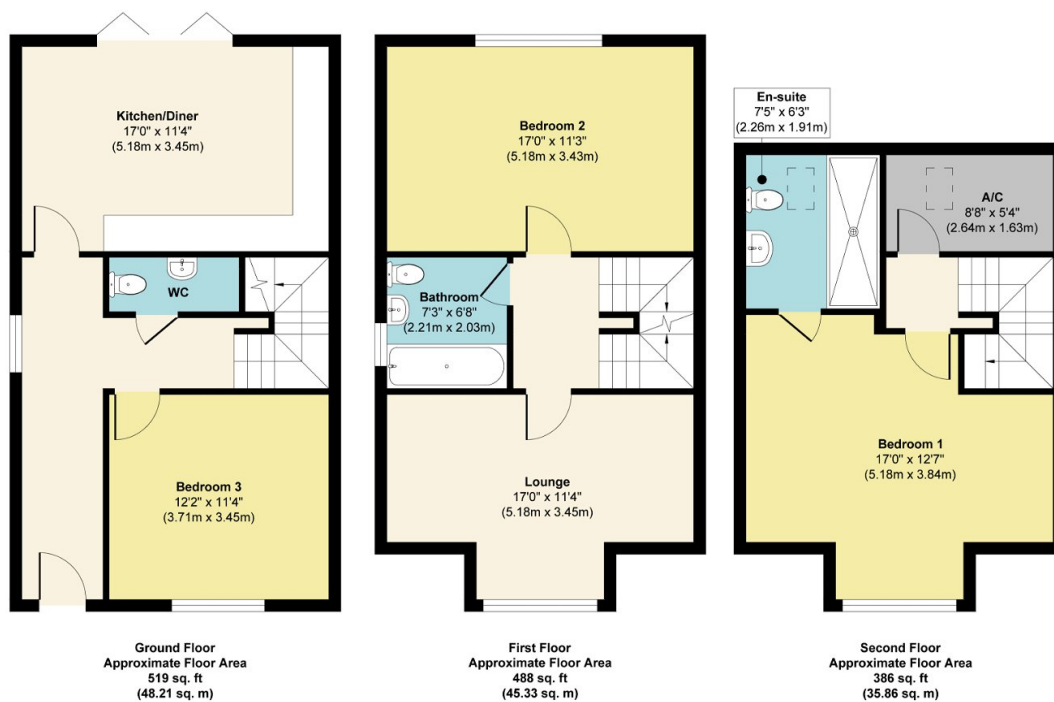


Lambert Way is an exciting new build development of only four high spec family homes located in an elevated position in the ever popular suburb of St George. The development consists of 2 semi detached three storey town houses and 2 semi detached 2 storey houses all finished to a high standard throughout with integral appliances, bi fold doors, solar panels to the roof, air source heat pumps and EV charging points.

145-147 East Street, Bedminster, Bristol, BS3 4EJ

## Key Features

- Stunning New Build Family Homes
- Exclusive Development Of Only 4 Properties
- Two Design Types
- High Spec Finish Throughout
- Bi fold Doors Onto Gardens
- Kitchen With Integral Appliances
- Luxury Bathrooms
- Air Source Heat Pumps, EV Charging Point, Solar Panels
- Close To Local Amenities
- Sought After Address In A Mature Setting



**Approx. Gross Internal Floor Area 1393 sq. ft / 129.40 sq. m**

Illustration for identification purposes only, measurements are approximate, not to scale.

Produced by Elements Property

145-147 East Street, Bedminster, Bristol, BS3 4EJ