

Kingston Road, Southville, BS3

£585,000

3 1 1

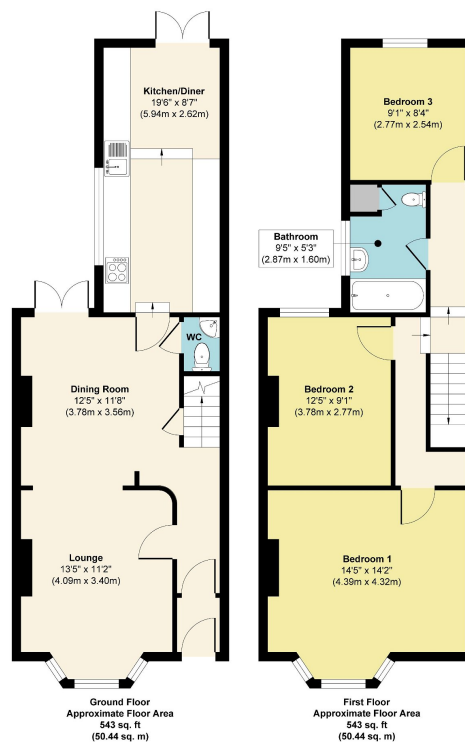


Located in a sought after quiet road in Southville is this classic double bay fronted three bedroom mid terrace period home. The bright and spacious accommodation in brief comprises of a entrance hallway, lounge with feature bay window opening into the dining space, large modern kitchen breakfast room and a useful cloakroom WC. To the first floor three well balanced bedrooms, master with feature bay window and a modern three piece bathroom suite. To the rear a low maintenance rear garden laid to patio. An early viewing is advised to avoid disappointment.

145-147 East Street, Bedminster, Bristol, BS3 4EJ

Key Features

- Sought After Address In Southville
- Classic Victorian Home
- Three Generous Bedrooms
- Large Open Lounge Dining Room
- Large Kitchen Breakfast Room
- Down Stairs WC
- Modern Family Bathroom
- Rear Garden
- Close To Wapping Wharf
- Close To North Street



Approx. Gross Internal Floor Area 1086 sq. ft / 100.88 sq. m
Illustration for identification purposes only, measurements are approximate, not to scale.
Produced by Elements Property