

Ashland Road, Withywood, Bristol, BS13

Offers Over £255,000

🛏 2 🚿 1 🛋 2

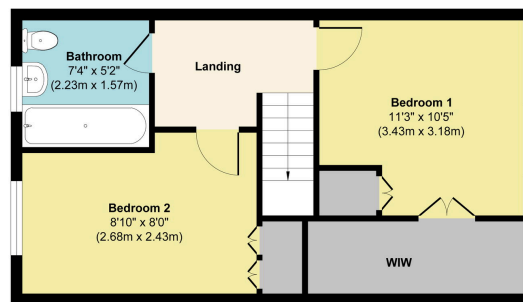


A two bedroom end of terrace home in excellent condition throughout, located in the popular area of Withywood. Located only a short walk to surrounding shops, school and bus links. Also, within easy access of Central Bristol via Colliters Way. Benefits include off street parking and a large garden with side access. The property also features an entrance hall, lounge, extended kitchen/diner, two bedrooms upstairs and a three piece bathroom suite. The master bedrooms features a walk-in-wardrobe. Perfect if you're looking for your first home or next step on the property ladder! Viewings are highly recommended to appreciate all this property has to offer.

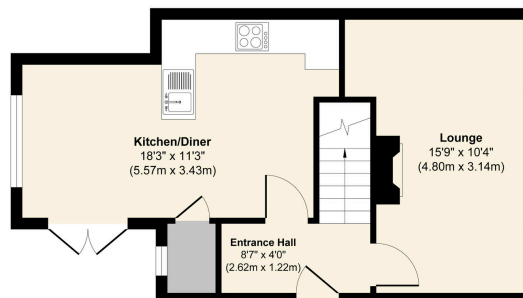
145-147 East Street, Bedminster, Bristol, BS3 4EJ

Key Features

- Two Bedrooms
- End Terrace
- Excellent Condition
- Off Street Parking
- Large Garden With Side Access
- Kitchen/Diner Extension
- Master Bedroom With Walk-In-Wardrobe
- Modern Bathroom
- Spacious Lounge
- Short Walk To Shops, Schools & Bus Links



First Floor
Approximate Floor Area
455 sq. ft
(42.28 sq. m)



Ground Floor
Approximate Floor Area
398 sq. ft
(36.98 sq. m)

Approx. Gross Internal Floor Area 853 sq. ft / 79.26 sq. m
Illustration for identification purposes only, measurements are approximate, not to scale.
Produced by Elements Property

145-147 East Street, Bedminster, Bristol, BS3 4EJ