

## Banwell Close, Bristol, BS13 7DT

£390,000

3 2 3

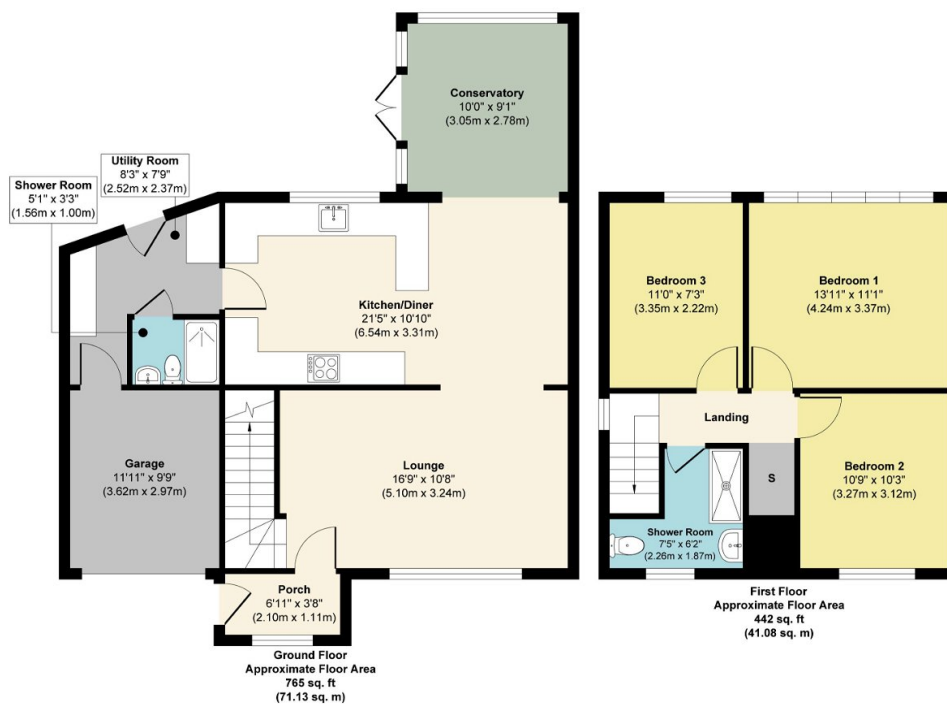


A three bedroom semi detached home well presented throughout, located in the popular area of Bedminster Down. Located within a quiet family area, only a short walk to local schools, shops and doctors. Also, within easy access of the City Centre via nearby bus links. Benefits include off street parking, garage and large garden. The property also features a porch, lounge, kitchen/diner, conservatory, downstairs shower room and WC, utility room, three bedrooms upstairs and a bathroom. Perfect if you're a first time buyer or family looking for more space, this property is also available with no chain! Viewings are highly recommended to appreciate all this property has to offer.

145-147 East Street, Bedminster, Bristol, BS3 4EJ

## Key Features

- NO CHAIN
- Semi Detached
- Garage
- Conservatory
- Large Garden
- Three Bedrooms
- Off Street Parking
- Kitchen/Diner
- Utility Room
- Short Walk To Schools & Shops



Approx. Gross Internal Floor Area 1207 sq. ft / 112.21 sq. m

Illustration for identification purposes only, measurements are approximate, not to scale.  
Produced by Elements Property