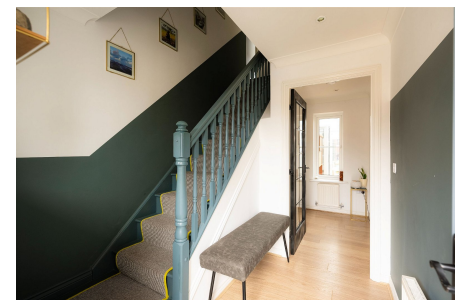


## Kings Croft, Long Ashton, BS41

£675,000

4 3 2



A stunning four bedroom detached family home in excellent condition throughout, located in the sought-after area of Long Ashton. This spacious property offers ample living space for a growing family. Downstairs, you will find three reception rooms, perfect for entertaining guests or creating a cozy family atmosphere. The spacious kitchen/diner provides a modern and stylish space for cooking and dining, with plenty of room for family meals and social gatherings. There is also a convenient WC on this level. Upstairs, the property boasts four well-appointed bedrooms, providing plenty of space for the whole family. The master bedroom features a walk-in wardrobe and ensuite bathroom, offering a private sanctuary for relaxation. Additionally, there

145-147 East Street, Bedminster, Bristol, BS3 4EJ

is another ensuite bathroom and a family bathroom, ensuring that there is no shortage of facilities for the whole family.

## Key Features

- Four Bedrooms
- Excellent Condition
- Two Ensuities
- Downstairs W.C
- Garage
- Detached
- Kitchen/Diner
- Three Reception Rooms
- Off Street Parking
- Quiet Family Location

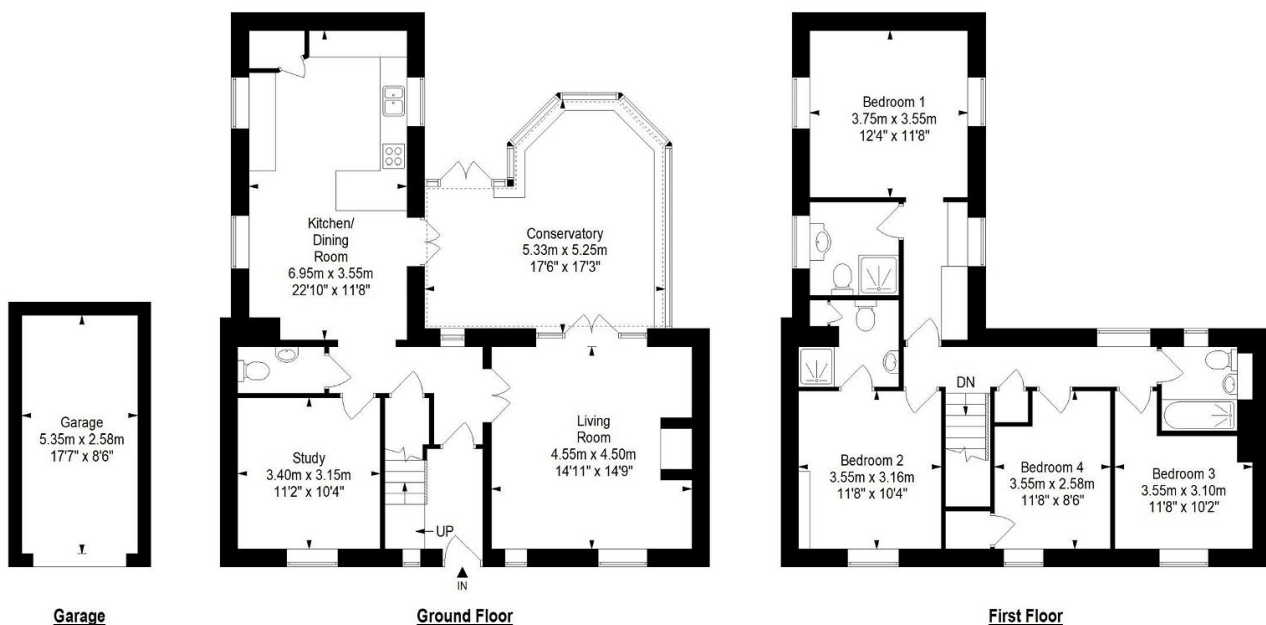
## Kings Croft, Long Ashton, BS41 9ED

Approximate Gross Internal Area = 167.2 sq m/ 1799.8 sq ft

(Excludes Garage)

Garage Area = 13.9 sq m/ 149.6 sq ft

Total Area = 181.1 sq m/ 1949.4 sq ft



This floor plan has been drawn using RICS guidelines (GIA)

Disclaimer: Please note this floor plan is for marketing purposes and is to be used as guide only. All Efforts have been made to ensure its accuracy at time of print

145-147 East Street, Bedminster, Bristol, BS3 4EJ