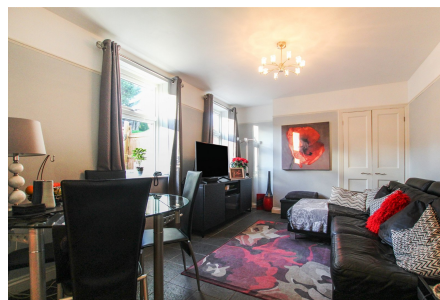


Wrington Crescent, Bedminster Down, Bristol

£350,000

3 1 2



A well presented three bedroom semi detached property located in the sought after area of Bedminster Down. This charming home offers ample living space and is perfect for first time buyers or a growing family. Upon entering, you will be greeted by a spacious and inviting entrance hall, The property also boasts two reception rooms, providing the ideal space for families. The open plan kitchen area is well-appointed, offering good storage and workspace. Upstairs, you will find three generously sized bedrooms, each offering a comfortable and peaceful retreat. The modern four piece bathroom suite is sure to impress, featuring both a free standing bath and a separate shower. One of the standout features of this property is the large

145-147 East Street, Bedminster, Bristol, BS3 4EJ

garden, which offers plenty of space for outdoor activities and entertaining. With side access and a garage to the rear, there is ample storage for all your gardening tools and equipment.

Key Features

- Three Bedrooms
- Well Presented Throughout
- Garage
- Two Reception Rooms
- Short Walk To School & Shops
- Semi Detached
- Popular Bedminster Down Location
- Large Garden With Side & Rear Access
- Modern Four Piece Bathroom Suite
- Easy Access To City Centre Via Car, Bus & Bike



Approx. Gross Internal Floor Area 900 sq. ft / 83.67 sq. m

Illustration for identification purposes only, measurements are approximate, not to scale.
Produced by Elements Property