

## Queens Ave, Portishead, BS20

Guide Price £200,000

🛏️ 2 🚿 1 🚗 1

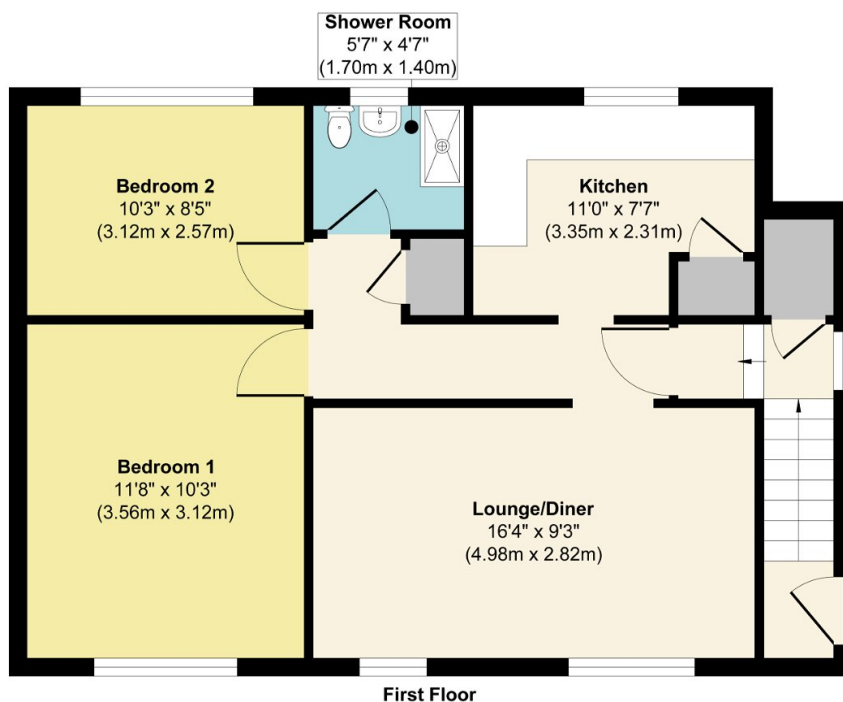


Garrett & Bradly are delighted to offer to market this spacious and bright first floor apartment offering commanding views over Portishead and the Gordano hillside. The stylish home offers a private entrance, large lounge diner, modern kitchen, two generous double bedrooms and a high spec luxury shower room. The home further benefits from a large landscaped and private rear garden set over two levels with raised beds and borders. An ideal first time buyer or investor purchase.

145-147 East Street, Bedminster, Bristol, BS3 4EJ

## Key Features

- Spacious & Bright First Floor Apartment
- Two Double Bedrooms
- Modern Kitchen
- Large Lounge Diner
- Private Entrance
- High Spec Shower Room
- Large Private Rear Garden
- Triple & Double Glazed Windows, Modern Combi Boiler
- Close To Local Amenities
- Views Over Portishead



Approx. Gross Internal Floor Area 596 sq. ft / 55.37 sq. m  
Illustration for identification purposes only, measurements are approximate, not to scale.  
Produced by Elements Property