

## THE CHESHAM

The Chesham is a generously sized three-bedroom property. Inspired by tradition, it has a double-fronted layout and features an attractive bay window which, together with French doors, make this a beautifully bright property. A welcoming hallway leads to two spacious reception rooms: a kitchen-dining area and living room. The large main bedroom benefits from an en suite and the two further bedrooms are both doubles.

### 3 BEDROOM HOME





**CREST  
NICHOLSON**

## THE CHESHAM

3 Bedroom Home

[crestnicholson.com](http://crestnicholson.com)

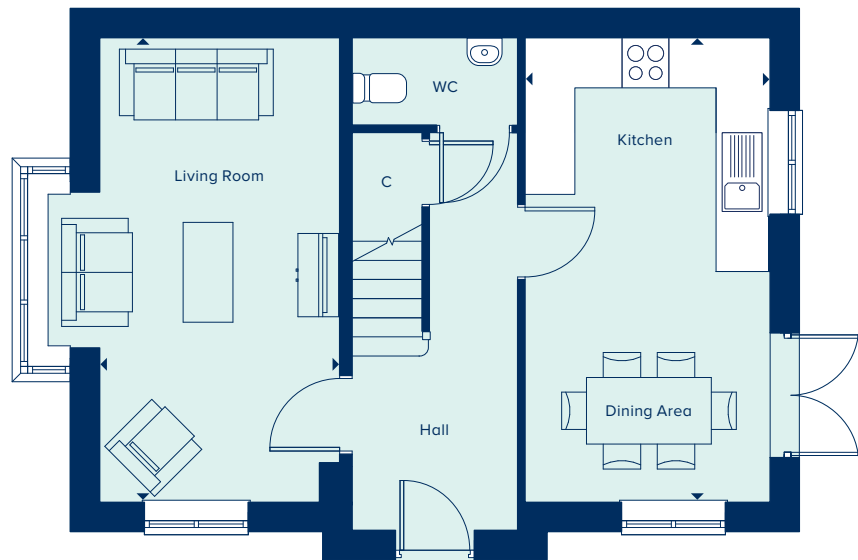
### GROUND FLOOR

#### KITCHEN / DINING AREA

5.58m x 2.94m 18'4" x 9'8"

#### LIVING ROOM

5.58m x 2.88m 18'4" x 9'5"



### FIRST FLOOR

#### BEDROOM 1

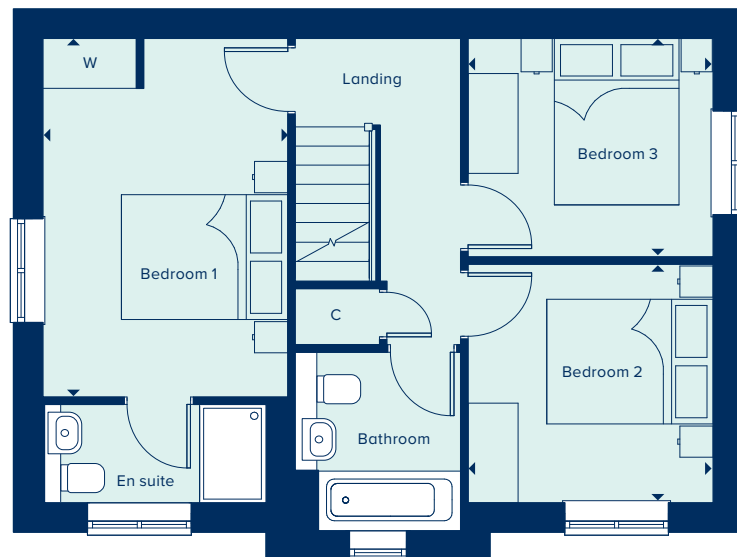
4.31m x 2.94m 14'1" x 9'8"

#### BEDROOM 2

2.94m x 2.87m 9'8" x 9'5"

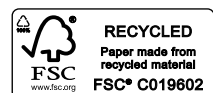
#### BEDROOM 3

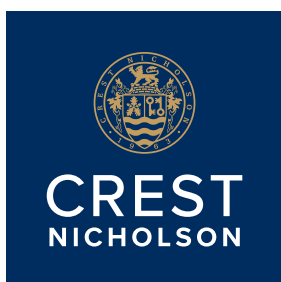
2.94m x 2.62m 9'8" x 8'7"



C Cupboard W Wardrobe

Please note, the digital illustrations are for illustration purposes only and any may not accurately depict elevation materials, gradients, landscaping or street furniture and may be subject to change. Whilst every effort has been made to ensure that the measurements and dimensions referred to in this brochure are an accurate reflection of the dimensions and measurements of the plots when built, the dimensions may vary from the measurements shown in the brochure save that any such variation shall be no greater than +/- 50mm of the measurements referred to in the brochure. You are strongly advised, therefore, not to order any carpets, appliances or any other goods which depend on precise dimensions before carrying out an actual measurement within your reserved plot. Whilst every reasonable effort has been made to ensure that the information contained in this brochure is correct, it is designed specifically as a guide only and does not constitute or form any part of a contract of sale transfer or lease unless any point that you specifically want to rely on is confirmed in writing by Crest Nicholson and is referred to in the contract. Please ask a sales executive for further details. Crest Nicholson is a registered developer with the New Homes Quality Code. Please speak to a sales executive if you need further help with any marketing material including provision in another format. 1010911/June 2023.





## THE FILEY

A four bedroom family home spread over three storeys, The Filey provides flexibility and space in which to entertain. The first floor features two double bedrooms plus a single bedroom and a family bathroom. Bedroom one takes up the entire second floor and benefits from an en suite and built-in wardrobe. The ground floor comprises of an open plan kitchen and dining area plus a separate living room with French doors to the rear garden.

### 4 BEDROOM HOME



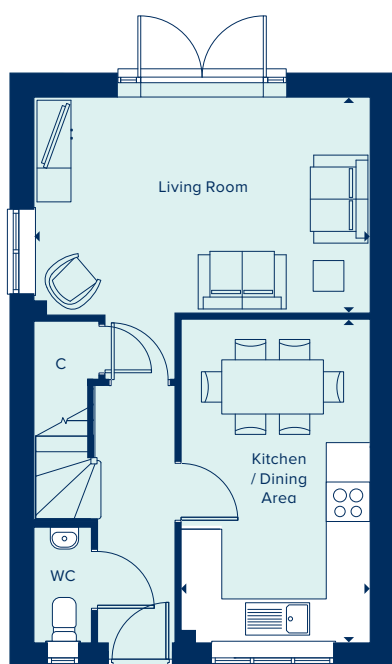


**CREST**  
NICHOLSON

## THE FILEY

4 Bedroom Home

[crestnicholson.com](http://crestnicholson.com)



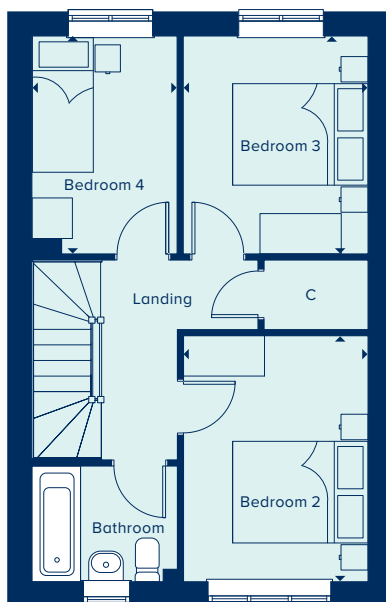
### GROUND FLOOR

#### LIVING ROOM

4.97m x 3.19m 16'3" x 10'5"

#### KITCHEN / DINING AREA

4.78m x 2.79m 15'8" x 9'2"



### FIRST FLOOR

#### BEDROOM 2

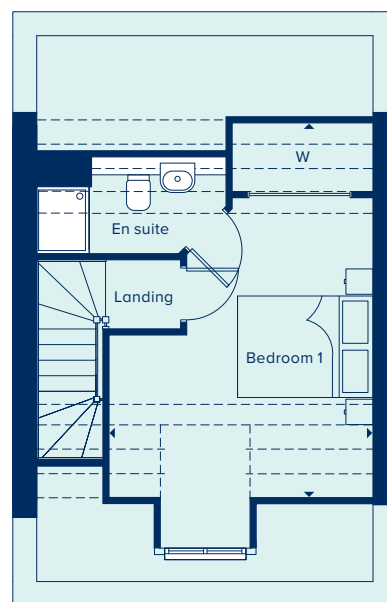
3.64m x 2.73m 11'11" x 8'11"

#### BEDROOM 3

3.22m x 2.73m 10'6" x 8'11"

#### BEDROOM 4

3.22m x 2.15m 10'6" x 7'0"



### SECOND FLOOR

#### BEDROOM 1

5.50m x 3.90m 15'11" x 12'8"

C Cupboard W Wardrobe ● Specification

Please note, the digital illustrations are for illustration purposes only and any may not accurately depict elevation materials, gradients, landscaping or street furniture and may be subject to change. Whilst every effort has been made to ensure that the measurements and dimensions referred to in this brochure are an accurate reflection of the dimensions and measurements of the plots when built, the dimensions may vary from the measurements shown in the brochure save that any such variation shall be no greater than +/- 50mm of the measurements referred to in the brochure. You are strongly advised, therefore, not to order any carpets, appliances or any other goods which depend on precise dimensions before carrying out an actual measurement within your reserved plot. Whilst every reasonable effort has been made to ensure that the information contained in this brochure is correct, it is designed specifically as a guide only and does not constitute or form any part of a contract of sale transfer or lease unless any point that you specifically want to rely on is confirmed in writing by Crest Nicholson and is referred to in the contract. Please ask a sales executive for further details. Crest Nicholson is a registered developer with the New Homes Quality Code. Please speak to a sales executive if you need further help with any marketing material including provision in another format. 1010911/June 2023.



**RECYCLED**  
Paper made from  
recycled material  
FSC® C019602





## THE HATFIELD

The Hatfield is an attractive two-storey home perfect for family life, including an open-plan kitchen-dining area ideal for entertaining, in addition to a separate living room with French doors providing ample natural light and views over the private garden. Upstairs, the main bedroom has the benefit of an en suite bathroom and two further bedrooms share a family bathroom.

### 3 BEDROOM HOME



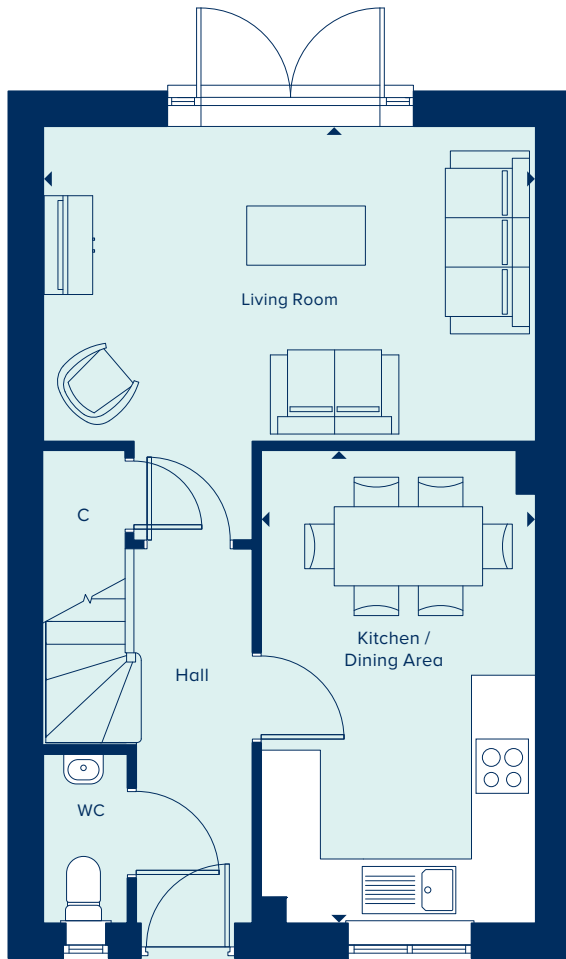


**CREST  
NICHOLSON**

## THE HATFIELD

3 Bedroom Home

[crestnicholson.com](https://crestnicholson.com)



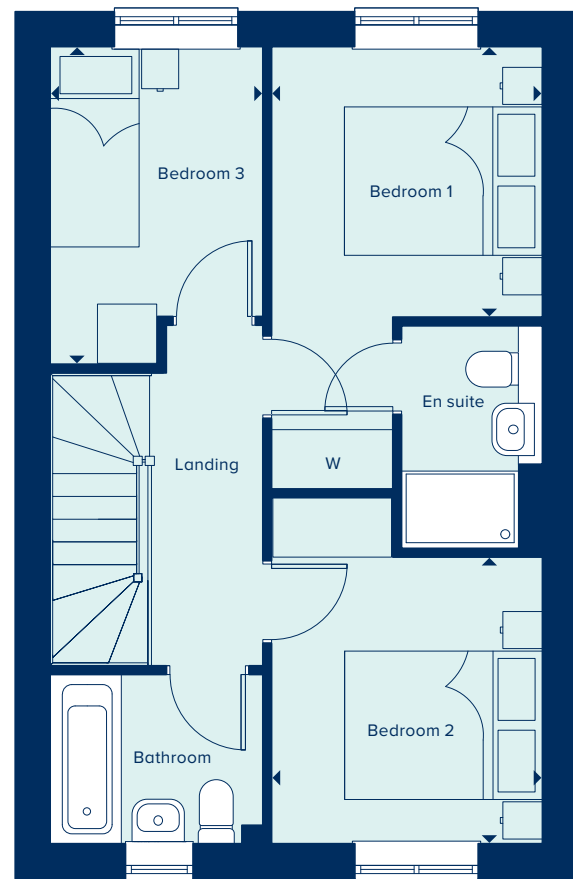
### GROUND FLOOR

#### KITCHEN / DINING AREA

4.78m x 2.77m 15'8" x 9'1"

#### LIVING ROOM

4.98m x 3.18m 16'4" x 10'5"



### FIRST FLOOR

#### BEDROOM 1

2.74m x 2.73m 9'0" x 8'11"

#### BEDROOM 2

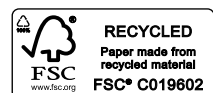
2.89m x 2.74m 9'6" x 9'0"

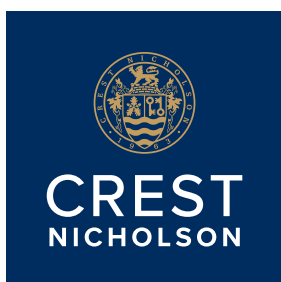
#### BEDROOM 3

3.21m x 2.15m 10'6" x 7'0"

C Cupboard W Wardrobe

Please note, the digital illustrations are for illustration purposes only and any may not accurately depict elevation materials, gradients, landscaping or street furniture and may be subject to change. Whilst every effort has been made to ensure that the measurements and dimensions referred to in this brochure are an accurate reflection of the dimensions and measurements of the plots when built, the dimensions may vary from the measurements shown in the brochure save that any such variation shall be no greater than +/- 50mm of the measurements referred to in the brochure. You are strongly advised, therefore, not to order any carpets, appliances or any other goods which depend on precise dimensions before carrying out an actual measurement within your reserved plot. Whilst every reasonable effort has been made to ensure that the information contained in this brochure is correct, it is designed specifically as a guide only and does not constitute or form any part of a contract of sale transfer or lease unless any point that you specifically want to rely on is confirmed in writing by Crest Nicholson and is referred to in the contract. Please ask a sales executive for further details. Crest Nicholson is a registered developer with the New Homes Quality Code. Please speak to a sales executive if you need further help with any marketing material including provision in another format. 1010911/June 2023.





## THE MARLBOROUGH

The Marlborough is ideally suited to modern family living. The elegant hallway provides access to the central living areas: an open-plan kitchen-dining area with utility room and a spacious, light-filled living room. Upstairs are four large bedrooms, with the main bedroom benefiting from an en suite bathroom.

4 BEDROOM HOME





**CREST  
NICHOLSON**

## THE MARLBOROUGH

4 Bedroom Home

[crestnicholson.com](http://crestnicholson.com)

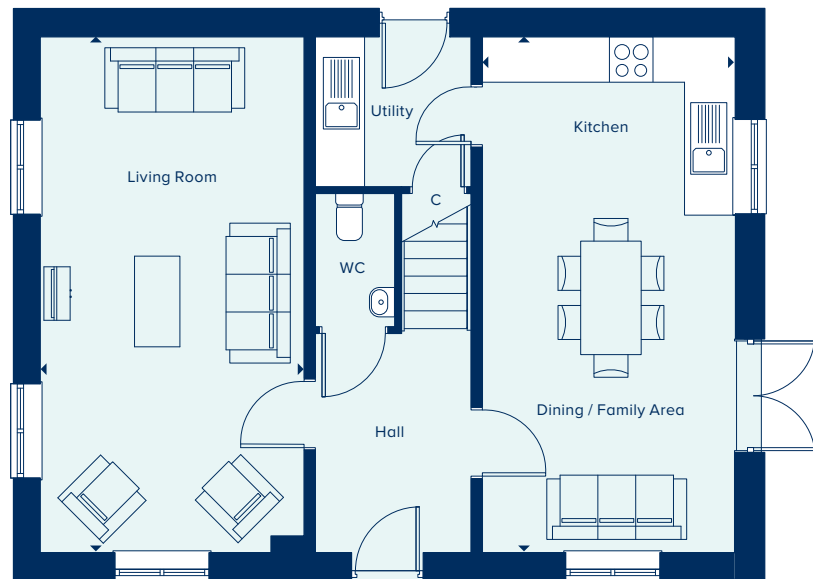
### GROUND FLOOR

#### KITCHEN / DINING / FAMILY AREA

6.82m x 3.33m 22'4" x 10'11"

#### LIVING ROOM

6.82m x 3.49m 22'4" x 11'5"



### FIRST FLOOR

#### BEDROOM 1

3.63m x 3.06m 11'11" x 10'0"

#### BEDROOM 2

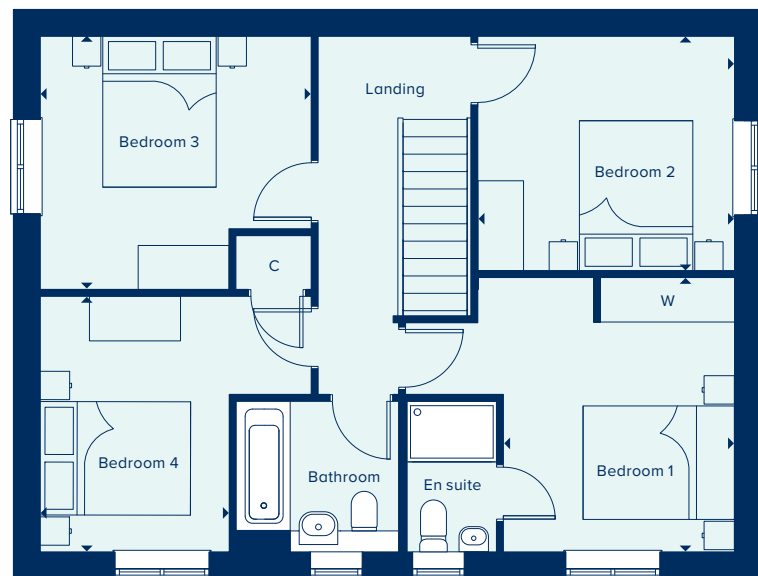
3.39m x 3.09m 11'2" x 10'2"

#### BEDROOM 3

3.58m x 3.35m 11'9" x 11'0"

#### BEDROOM 4

3.38m x 2.50m 11'1" x 8'2"



C Cupboard W Wardrobe ● Denotes 4 bedroom specification for The Marlborough

Please note, the digital illustrations are for illustration purposes only and any may not accurately depict elevation materials, gradients, landscaping or street furniture and may be subject to change. Whilst every effort has been made to ensure that the measurements and dimensions referred to in this brochure are an accurate reflection of the dimensions and measurements of the plots when built, the dimensions may vary from the measurements shown in the brochure save that any such variation shall be no greater than +/- 50mm of the measurements referred to in the brochure. You are strongly advised, therefore, not to order any carpets, appliances or any other goods which depend on precise dimensions before carrying out an actual measurement within your reserved plot. Whilst every reasonable effort has been made to ensure that the information contained in this brochure is correct, it is designed specifically as a guide only and does not constitute or form any part of a contract of sale transfer or lease unless any point that you specifically want to rely on is confirmed in writing by Crest Nicholson and is referred to in the contract. Please ask a sales executive for further details. Crest Nicholson is a registered developer with the New Homes Quality Code. Please speak to a sales executive if you need further help with any marketing material including provision in another format. 1010911/June 2023.







## THE ROMSEY

With flexible open-plan living space and generously sized bedrooms, the Romsey is an attractive family home. The downstairs benefits from a substantial, bright and airy living room. A versatile kitchen-dining area with ample space for relaxation or play is ideally suited to family life. Upstairs are four bedrooms and two bathrooms (one en suite).

### 4 BEDROOM HOME



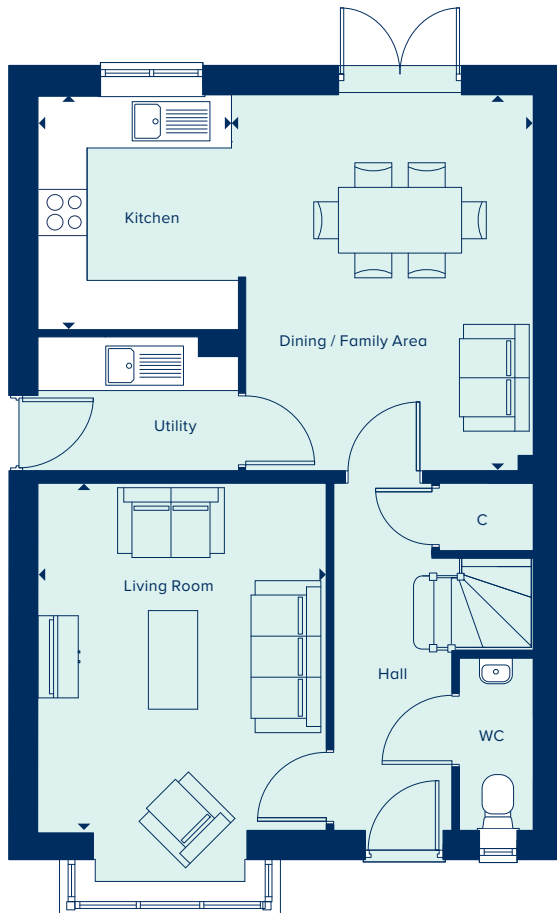


**CREST  
NICHOLSON**

## THE ROMSEY

4 Bedroom Home

[crestnicholson.com](https://www.crestnicholson.com)



### GROUND FLOOR

#### KITCHEN

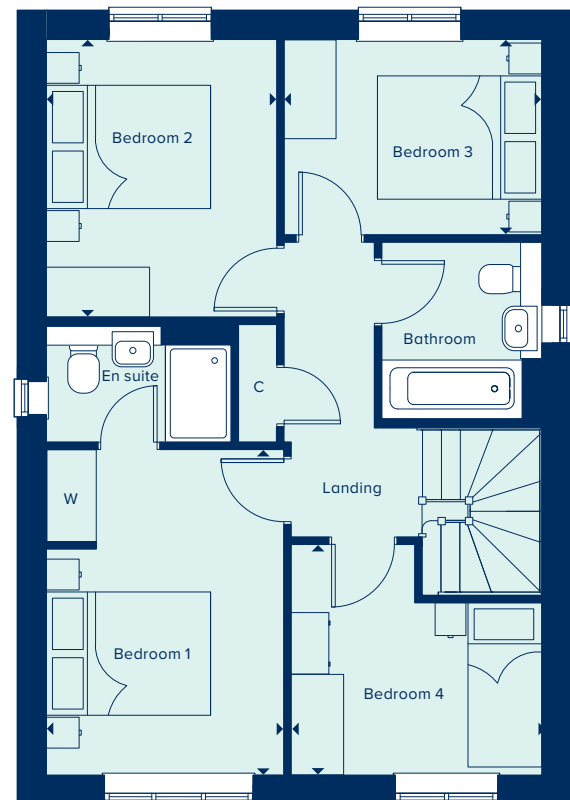
2.86m x 2.36m 9'4" x 7'7"

#### DINING / FAMILY AREA

4.58m x 3.68m 15'5" x 12'1"

#### LIVING ROOM

4.22m x 3.51m 13'10" x 11'6"



### FIRST FLOOR

#### BEDROOM 1

3.96m x 2.89m 13'0" x 9'4"

#### BEDROOM 2

3.38m x 2.80m 11'1" x 9'2"

#### BEDROOM 3

3.14m x 2.38m 10'3" x 7'8"

#### BEDROOM 4

3.05m x 2.80m 10'0" x 9'2"

C Cupboard W Wardrobe ● Specification

Please note, the digital illustrations are for illustration purposes only and any may not accurately depict elevation materials, gradients, landscaping or street furniture and may be subject to change. Whilst every effort has been made to ensure that the measurements and dimensions referred to in this brochure are an accurate reflection of the dimensions and measurements of the plots when built, the dimensions may vary from the measurements shown in the brochure save that any such variation shall be no greater than +/- 50mm of the measurements referred to in the brochure. You are strongly advised, therefore, not to order any carpets, appliances or any other goods which depend on precise dimensions before carrying out an actual measurement within your reserved plot. Whilst every reasonable effort has been made to ensure that the information contained in this brochure is correct, it is designed specifically as a guide only and does not constitute or form any part of a contract of sale transfer or lease unless any point that you specifically want to rely on is confirmed in writing by Crest Nicholson and is referred to in the contract. Please ask a sales executive for further details. Crest Nicholson is a registered developer with the New Homes Quality Code. Please speak to a sales executive if you need further help with any marketing material including provision in another format. 1010911/June 2023.

